

Product datasheet for **RC207452**

OSBPL5 (NM_145638) Human Tagged ORF Clone

Product data:

| | |
|---------------------------|---|
| Product Type: | Expression Plasmids |
| Product Name: | OSBPL5 (NM_145638) Human Tagged ORF Clone |
| Tag: | Myc-DDK |
| Symbol: | OSBPL5 |
| Synonyms: | OBPH1; ORP5 |
| Mammalian Cell Selection: | Neomycin |
| Vector: | pCMV6-Entry (PS100001) |
| E. coli Selection: | Kanamycin (25 ug/mL) |



[View online »](#)

ORF Nucleotide Sequence:

>RC207452 representing NM_145638
 Red=Cloning site Blue=ORF Green=Tags(s)

TTTTGTAATACGACTCACTATAGGGCGGCCGGAATTCGTCGACTGGATCCGGTACCGAGGAGATCTGCC
 GCC**CGATCGCC**

ATGAAGGAGGAGCCTTCTCCGGCCGCTTCTCCCTGTGTCCACCTTCTCCACCCTCAGAAAGTCG
 ACCCCCGAAGCTCACCCGGAACCTGCTCCTCAGCGGAGACAATGAGCTCTACCCACTCAGCCCAGGGAA
 GGACATGGAGCCCAACGGCCCGTCGCTGCCAGGGATGAAGGGCCCCGACCCCAAGCTCTGCCACGAAG
 GTGCCACCGGCAGAGTACAGGCTGTGCAACGGGTGAGACAAGGAATGTGTGTCCCCACCGCCAGGGTCA
 CCAAGAAGGAGACTCTCAAGGCGCAGAAGGAGAACTACCGGCAGGAGAAGAAGCGCGCCACACGGCAGCT
 GCTCAGCGCTCTGACAGACCCACGCTGGTTCATCATGGCTGACAGCCTGAAGGGCCCCAAAGGTGAGAGC
 GTGGGCTCCATCACACAGCCCTGCCAGCAGCTACCTGATCTTCAGGGCCGCTCCGAGTCAGATGGTC
 GCTGCTGGCTGGACGCCCTGGAGCTGGCCCTGCGCTGCTTAGCCTACTGAGACTGGGCACCTGCAAGCC
 GGGCCGAGACGGGAGCCAGGGACTCGCCAGACGCATACCCTCATCGCTCTGTGGGCTGCCAGCCTCA
 GCCACCGTCCACCCAGACCAAGACCTGTCCCCTGAACGGGTCTCCCTGGAGAACGATGCATTCTCAG
 ACAAGTCGGAGAGAGAGAACCCTGAGGAGTCAGATACCGAGACCCAGGACCATAGCCGGAAGACGGAGAG
 TGGCAGCGACAGTCAGAGACCCCTGGGGCCCCGGTGGGAGAGGGACCACCTATGTGGAGCAGGTCCAG
 GAGGAGCTGGGGGAGCTGGGCGAGGCGTCCCAGGTGGAGACAGTGTGAGAGGAGAACAAGAGTCTGATGT
 GGACCTGCTGAAGCAGCTACGGCCAGGCATGGACCTGTCCCAGTGGTGTCTACCCAGTTCGACTGGA
 GCCCGCTCCTTCTGAACAAGCTCTCCGACTACTACTACCACGCAGACCTGCTCTCCAGGGCTGCGGTG
 GAGGAGGATCCCTACAGCCGCATGAAGCTGGTGTGCGGTGGTACCTGTCTGGCTTCTACAAGAAGCCCA
 AGGGAATCAAGAAGCCGTACAACCCATCCTGGGGGAGACCTCCGCTGCTGCTGGTTCACACCCGAGAC
 TGACAGCCGCACATTCTACATAGCAGAGCAGGTGTCCCACCCAGCCCGTGTCTGCCTTCCACGTCAGC
 AACCGGAAGGACGGCTTCTGCATCAGTGGCAGCATCACAGCCAAGTCCAGTTTTATGGAACTCGTGT
 CGGCGCTGCTGGACGGCAAAGCCACGCTCACCTTCTGAACCGAGCCGAGGATTACACCTTACCATGCC
 CTACGCCACTGCAAAGGAATCCTGTATGGCAGATGACCCTGGAGCTGGGTGGGAAGGTACCATCGAG
 TGTGCGAAGAACAATTCAGGCCAGCTGGAATTCAACTCAAGCCCTTCTTCGGGGTAGCACCAGCA
 TCAACCAGATCTCGGAAAGATCACGTGGGAGAGGAAGTCTGGCGAGCCTCAGTGGCCACTGGGACAG
 GGACGTGTTTATCAAGGAGGAAGGGAGCGGAAGCAGTGGCCTTTCTGGACCCGAGCGGGAGGTCCGC
 AGACAGAGGCTGAGGCAGCACACGGTGGCCTGGAGGAGCAGACGGAGCTGGAGTCCGAGAGGCTCTGGC
 AGCACGTACCCAGGGCCATCAGCAAGGGCGACCAGCACAGGGCCACACAGGAGAAGTTTGCAGTGGAGGA
 GGCACAGCGGCAGCGGGCCCGTGAAGCGGAGGAGCCTCATGCCCTGGAAGCCGACGCTGTTCCACCTG
 GACCCATCACCCAGGAGTGGCACTACCGATACGAGGACCACAGCCCTGGGACCCCTGAAGGACATCG
 CCCAGTTTGAAGACGGGATCCTGGGACCTTGCAGCAGGAGGCCGCTGGCCCGCCAGACCACCTTCT
 GGGCAGCCAGGGCCAGGCACGAGAGGTCTGGCCAGACCAGCGGCTTCGCAAGGCCAGCGACCAGCCC
 TCCGGCCACAGCCAGGCCACGGAGAGCAGCGGATCCACGCCTGAGTCTGCCAGAGCTCTCAGACGAGG
 AGCAGGATGGTGACTTTGTCCCTGGCGGTGAGAGCCATGCCCTCGTGCAGGAAGGAGGGCGGGCGCT
 GCAGGCCCTGCAGAGGCCATCCTCTCCATCCGAGAGGCCAGCAGGAGCTGCACAGGCACCTCTCGGCC
 ATGCTGAGCTCCACGGCACGGGACAGCAGGCACCGACCCAGGCTCCTGCAGAGCCCGATCCTGGT
 TCCTGCTCTGCGTGTCTGGCGTGTGAGCTGTTCAATACCACATCCTCAA

ACGCGTACGCGGCCGCTCGAGCAGAACTCATCTCAGAAGAGGATCTGGCAGCAAATGATATCCTGGATT
 ACAAGGATGACGACGATAAGGTTTAA

Protein Sequence: >RC207452 representing NM_145638
Red=Cloning site Green=Tags(s)

MKEEAFLLRRRFSLCPPSSTPQKVDPRKL TRNLLLSGDNELYPLSPGKDMEPNGPSLPRDEGPPTPSSATK
VPPAEYRLCNGSDKECVSPTARVTKKETLKAQKENYRQEKKRATRQLLSAL TDPSVVIMADSLKGPKGES
VGSITQPLPSSYLIFRAASESDGRCWLDAL ELALRCSSLLRLGTCKPGRDGEPGTSPDASPSSLCGLPAS
ATVHPDQDLFPLNGSLEND AFSDKSERENPEESDTETQDHSRKTESGSDQSETPGAPVRRGTTYVEQVQ
EELGELGEASQVETVSEENKSLMWTLLKQLRPGMDLSRVVLP TFVLEPRSFNLKLSDYHHADLLSRAAV
EEDAYS RMKLVLRWYLSGFYKKPKGIKKPYNPILGETFRCCWFHPQTDSRTFYIAEQVSHHPPVSAFHVS
NRKDGFCISGSITAKSRFYGNLSALLDGKATL TFLNRAEDYTL TMPYAHCKGILYGMTLELGGKV TIE
CAKNNFQAQLEFKLKPF FGGSTSINQISGKITSGEEVLASLSGHWRDVF IKEEGSGSSALFWTPSGEVR
RQRLRQHTVPLEEQTELESERLWQHVTRAISKGDQHRATQEKFALEEAQRQRARERQESLMPWKPQLFHL
DPITQEWYRYEDHSPWDPLKDIAQFEQD GILRTLQQEAVARQTTFLGSPGPRHERSGPDQRLRKASDQP
SGHSQATESSGSTPE SCAPELSDEEQD GDFVPGGESPCPRCRKEARRLQALHEA ILSIREAAQQLHRHLSA
MLSSTARAAQAPT PGLLQSPRSWFLLCVFLACQLFINHILK

TRTRPLEQKLISEEDLAANDILDYKDDDDKV

Chromatograms: https://cdn.origene.com/chromatograms/mg2860_a07.zip

Restriction Sites: Sgfl-Mlul

Reconstitution Method:

1. Centrifuge at 5,000xg for 5min.
2. Carefully open the tube and add 100ul of sterile water to dissolve the DNA.
3. Close the tube and incubate for 10 minutes at room temperature.
4. Briefly vortex the tube and then do a quick spin (less than 5000xg) to concentrate the liquid at the bottom.
5. Store the suspended plasmid at -20°C. The DNA is stable for at least one year from date of shipping when stored at -20°C.

RefSeq: [NM_145638.3](#)

RefSeq Size: 3662 bp

RefSeq ORF: 2436 bp

Locus ID: 114879

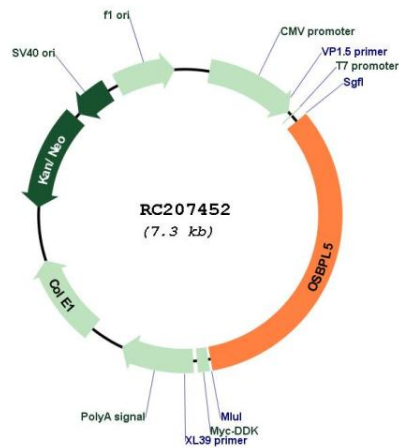
UniProt ID: [Q9H0X9](#)

Cytogenetics: 11p15.4

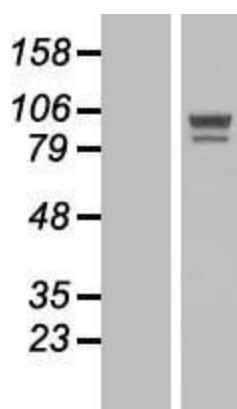
MW: 90.6 kDa

Gene Summary: This gene encodes a member of the oxysterol-binding protein (OSBP) family, a group of intracellular lipid receptors that play a key role in the maintenance of cholesterol balance in the body. Most members contain an N-terminal pleckstrin homology domain and a highly conserved C-terminal OSBP-like sterol-binding domain. This gene has been shown to be imprinted, with preferential expression from the maternal allele only in placenta. Transcript variants encoding different isoforms have been identified. [provided by RefSeq, Oct 2010]

Product images:



Circular map for RC207452



Western blot validation of overexpression lysate (Cat# [LY407938]) using anti-DDK antibody (Cat# [TA50011-100]). Left: Cell lysates from untransfected HEK293T cells; Right: Cell lysates from HEK293T cells transfected with RC207452 using transfection reagent MegaTran 2.0 (Cat# [TT210002]).