

Product datasheet for **RC207450**

FSCB (NM_032135) Human Tagged ORF Clone

Product data:

Product Type:	Expression Plasmids
Product Name:	FSCB (NM_032135) Human Tagged ORF Clone
Tag:	Myc-DDK
Symbol:	FSCB
Synonyms:	C14orf155
Mammalian Cell Selection:	Neomycin
Vector:	pCMV6-Entry (PS100001)
E. coli Selection:	Kanamycin (25 ug/mL)



[View online »](#)

**ORF Nucleotide
Sequence:**

>RC207450 ORF sequence
 Red=Cloning site Blue=ORF Green=Tags(s)

TTTTGTAATACGACTCACTATAGGGCGGCCGGAATTCGTCGACTGGATCCGGTACCGAGGAGATCTGCC
 GCC**CGCATCGCC**

ATGGTAGGCAAATCCCAGCAAAGTATGTAATAGAGAAAAAGAAACACATGGCCATACCAAATCATCTA
 GCCCAAAGCTACCCATCGTATTGGTAATACTTCTGGAAGCAAAGGCAGCTACTCTGCCAAAGCCTATGA
 GTCTATTAGAGTATCTTCTGAGCTTCAGCAAAGTGGACAAAGAGAAAGCATGGACAGGAAATGACTAGT
 AAGTCTCTCCAGACAGACACCATTGTAGAAGAGAAAAAGAAAGTCAAGTTAGTTGAGGAAACCGTGGTAC
 CTGAAGAAAAGTCAAGTGTATTAGAGAAGCTGCTATTGAATTGCCAGAGAGTGTTCAGGATGTAGAAAT
 TCCACCAAACATACTTCAGTTCAACTAAAAATGGACAGATCTCAGCAGACCAGCCGTACAGGATACTGG
 ACCATGATGAACATCCCCCTGTAGAAAAGTGGACAAGGAACAACAGACATACTTTAGTGAATCAGAAA
 TAGTGGTTATTTCCAGGCCAGATAGTTCTTCTACAAAGTCAAAGGAAGATGCCCTGAAACATAAATCGTC
 GGGAAAGATTTTTGCTAGTGAACAACCTGAATTTCAACCAGCAACAACAGCAATGAAGAAATTTGGCGAG
 AAAAAATATCAGCAGAAGTTCATTTACTCAGGAGACTAAAAAGGTCCCCCGGTACTTTTAGAAGATGAGC
 TTAGGGAAGAAGTAACTGTACCTGTTGTACAAGAAGGTTCTGCTGTTAAAAAGTGGCTTCTGCTGAAAT
 AGAGCCTCCATCAACAGAAAAATCCCAGCTAAAAACAGCCTCCATTAGTTGAAGAGGCCACTGCTAAA
 GCGGAGCCAGACCTGCTGAAGAGACCCATGTCCAAGTACAGCCATCAACTGAAGAGACTCCTGATGCTG
 AGGCAGCCACTGCAGTTGCGGAGAATTCGTTAAAGTTCAGCCTCCACCTGCTGAAGAGGCCCTTTAGT
 GGAGTTTCTGCTGAAATTCAGCCTCCATCAGCTGAAGAGTCTCCTTCTGTAGAGCTTCTGGCTGAAAT
 CTGCCTCCATCAGCTGAAGAGTCCCTTTCAGAAGAGCCTCCTGCTGAAATTTGCCTCCACCAGTGAAA
 AGTCTCCTTCAGTGAAGCCTCTTGGTGAATTCGGTCTCCCTCAGCACAAAAGGCTCCCATTTGAAGTACA
 GCCTTTACCAGCTGAGGGCGCCCTTGAAGAGGCCCTCAGCTAAAGTGAAGCCTCCCACTGTTGAAGAGACC
 CTTGCTGATGTTCAAGCCTCTATTACCTGAAGAGGCTCCTAGAGAAGAGGCTCGAGAAGTTCAGCTTTCAA
 CAGCTATGGAGACCCCTGCAGAAGAGGCTCCTACTGAATTTAGTCTCCATTACCTAAAGAGACCACTGC
 AGAAGAGGCCCTGCTGAAATTCAGCTTCTAGCAGCTACGGAGCCTCCTGCAGATGAAACTCCTGCCGAA
 GCTCGGCTCCTACTATCTGAGGAGACTTCTGCAGAAGAGGCTCATGCTGAAGTTCAATCTCCATTAGCTG
 AAGAGACCACTGCAGAAGAGGCCCTGCTGAAATTCAGCTTCTAGCAGCTATAGAGGCTCCTGCAGATGA
 AACTCCTGCTGAAGCTCAGTCTCCACTATCTGAGGAGACTTCTGCAGAAGAGGCTCCTGCTGAAGTTCAG
 TCTCCATCAGCTAAGGGAGTTTCTATAGAAGAGGCCCTCTTGAAGTTCAGCCTCCATCAGGTGAAGAGA
 CCACTGCAGAAGAGGCCCTGCTGCAATTCAGCTTCTAGCAGCTACAGAGGCTTCTGCAGAAGAGGCTCC
 TGCTGAAGTTCAGCCTCCACCAGCTGAGGAGGCCCGCTGAAGTTCAGCCTCCACCAGCTGAGGAGGCC
 CCCGCTGAAGTTCAGCCTCCACCAGCTGAGGAGACCCCGCTGAAGTTCAGCCTCCACCAGCTGAGGAGG
 CCCCCTGCTGAAGTTCAGCTTCTACCAGCTGAGGAGACTCCTATAGAAGAGACCCTTGTGCAGTACAC
 TCTCCCCAGCTGATGATGTCCTGCAGAAGAGGCCCTCCGTTGACAAACATTTCCCACCAGCTGATTTGC
 TTCTGACTGAGGAGTTTCTATAGGAGAGGCCCTGCTGAAGTTTCACTCCACCATCTGAACAAACCCC
 TGAAGATGAGGCTCTGGTAGAGAATGTGTACAGAATTTAGTCAAGGAGGAGGAGGAGGAGGAGGAGGAGG
 GTAAAATTAGGATCGGTTGTTTTGGAAGGTGAAGCAAAATTTGAAGAGGTTTCAAAAATCAATTCTGTCC
 TTAAGATTTGTCTAATACCAATGATGGACAGGCTCCCACTCTTGAATAGAAAGTGTTCATATAGA
 ATTAACAACGTCCTCCTGAACTG

ACGCGTACGCGGCCGCTCGAGCAGAACTCATCTCAGAAGAGGATCTGGCAGCAAATGATATCCTGGATT
 ACAAGGATGACGACGATAAGGTTTAA

Protein Sequence: >RC207450 protein sequence
Red=Cloning site Green=Tags(s)

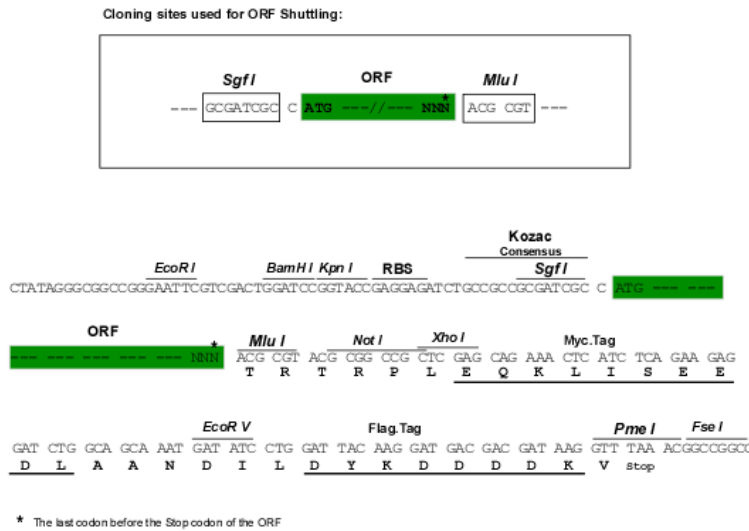
MVGKSQQTDVIEKKKHMAIPKSSSPKATHRIGNTSGSKGSYSKAYESIRVSSELQQTWTKRKHGQEMTS
KSLQTDITVEEKKEVKLVEETVVPPEEKSAVREAAIPELVQDVEIPPNIPSVQLKMDRSQQTSTRGYW
TMMNIPPVEKVDKEQQTYSSEIIVVISRPDSSSTKSKEDALKHKSSGKIFASEQPEFQPATNSNEEIGQ
KNISRTSFTQETKKGPPVLLLEDELREEVTVPVVQEGSAVKKVASAEIEPPSTEKFPAKIQPPLVEEATAK
AEPRPAEETHVQVPSTEETPDAAATAVAENSVKVQPPPAEEAPLVEFPAEIQPPSAEESPSVELLAEI
LPPSAEESLSEPPAEILPPPAEKSPSVEPLGEIRSPSAQKAPIEVQPLPAEGALEEASAKVEPPTVEET
LADVQPLLPEEAPREEARELQLSTAMETPAEEAPTEFQSPLPKETTAAEEASAEIQLLAATEPPADETPAE
ARSPLSEETSAAEAHAEVQSPLAEETTAEEASAEIQLLAAIEAPADETPAEAQSPLSEETSAAEEAPAEVQ
SPSAKGVSEEAPELQPPSGEETTAEEASAAIQLLAATEASAEAPAEVQPPPAEEAPAEVQPPPAEEA
PAEVQPPPAEETPAEVQPPPAEEAPAEVQPPPAEEAPAEVQPPPAEEAPAEVQSLPAEETPIEETLAAVH
SPPADDVPAEEASVDKHSPPADLLLTEEFPIGEASAEVSPPPSEQTPEDEALVENVSTEFQSPQVAGIPA
VKLGSVVLEGEAKFEEVSKINSVLKDLNNTNDGQAPTLEIESVFHIELKQRPEL

TRTRPLEQKLISEEDLAANDILDYKDDDDKV

Chromatograms: https://cdn.origene.com/chromatograms/mk6694_a07.zip

Restriction Sites: Sgfl-Mlul

Cloning Scheme:



ACCN: NM_032135

ORF Size: 2475 bp

OTI Disclaimer: The molecular sequence of this clone aligns with the gene accession number as a point of reference only. However, individual transcript sequences of the same gene can differ through naturally occurring variations (e.g. polymorphisms), each with its own valid existence. This clone is substantially in agreement with the reference, but a complete review of all prevailing variants is recommended prior to use. [More info](#)

OTI Annotation: This clone was engineered to express the complete ORF with an expression tag. Expression varies depending on the nature of the gene.

Components: The ORF clone is ion-exchange column purified and shipped in a 2D barcoded Matrix tube containing 10ug of transfection-ready, dried plasmid DNA (reconstitute with 100 ul of water).

Reconstitution Method:

1. Centrifuge at 5,000xg for 5min.
2. Carefully open the tube and add 100ul of sterile water to dissolve the DNA.
3. Close the tube and incubate for 10 minutes at room temperature.
4. Briefly vortex the tube and then do a quick spin (less than 5000xg) to concentrate the liquid at the bottom.
5. Store the suspended plasmid at -20°C. The DNA is stable for at least one year from date of shipping when stored at -20°C.

RefSeq: [NM_032135.2](#), [NP_115511.2](#)

RefSeq Size: 3170 bp

RefSeq ORF: 2478 bp

Locus ID: 84075

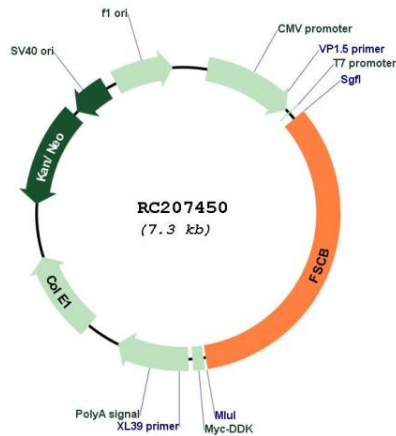
UniProt ID: [Q5H9T9](#)

Cytogenetics: 14q21.2

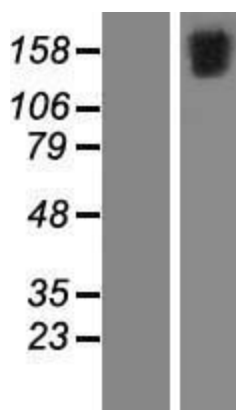
MW: 88 kDa

Gene Summary: May be involved in the later stages of fibrous sheath biogenesis and spermatozoa capacitation. Inhibits ROPN1 and ROPN1L SUMOylation. Binds calcium.[UniProtKB/Swiss-Prot Function]

Product images:



Circular map for RC207450



Western blot validation of overexpression lysate (Cat# [LY410328]) using anti-DDK antibody (Cat# [TA50011-100]). Left: Cell lysates from untransfected HEK293T cells; Right: Cell lysates from HEK293T cells transfected with RC207450 using transfection reagent MegaTran 2.0 (Cat# [TT210002]).