

## Product datasheet for **RC207444**

### CaMKI gamma (CAMK1G) (NM\_020439) Human Tagged ORF Clone

#### Product data:

|                           |   |
|---------------------------|---|
| Product Type:             | Expression Plasmids                                     |
| Product Name:             | CaMKI gamma (CAMK1G) (NM_020439) Human Tagged ORF Clone |
| Tag:                      | Myc-DDK   |
| Symbol:                   | CaMKI gamma   |
| Synonyms:                 | CLICK3; CLICKIII; dj272L16.1; VWS1                      |
| Mammalian Cell Selection: | Neomycin  |
| Vector:                   | pCMV6-Entry (PS100001)                                  |
| E. coli Selection:        | Kanamycin (25 ug/mL)                                    |



[View online »](#)

**ORF Nucleotide Sequence:**

>RC207444 ORF sequence  
 Red=Cloning site Blue=ORF Green=Tags(s)

TTTTGTAATACGACTCACTATAGGGCGGCCGGAATTCGTCGACTGGATCCGGTACCGAGGAGATCTGCC  
 GCC**CGGATCGCC**

ATGGGTCGAAAGGAAGAAGATGACTGCAGTTCCTGGAAGAAACAGACCACCAACATCCGGAAAACCTTCA  
 TTTTATGGAAGTCTGGGATCAGGAGCTTCTCAGAAGTTTCTGGTGAAGCAAAGACTGACTGGGAA  
 GCTCTTTGCTCTGAAGTGCATCAAGAAGTCACTGCCTCCGGGACAGCAGCCTGGAGAATGAGATTGCT  
 GTGTTGAAAAAGATCAAGCATGAAAACATTGTGACCTGGAGGACATCTATGAGAGCACCACCCACTACT  
 ACCTGGTCATGCAGCTTGTCTGGTGGGAGCTTTGACCGGATCCTGGAGCGGGGTGTCTACACAGA  
 GAAGGATGCCAGTCTGGTATCCAGCAGGTCTTGTGCGCAGTCAAATACCTACATGAGAATGGCATCGTC  
 CACAGAGACTTAAAGCCCGAAAACCTGCTTACCTTACCCCTGAAGAGAAGTCTAAGATCATGATCACTG  
 ACTTTGGTCTGTCCAAGATGGAACAGAATGGCATCATGTCCACTGCCTGTGGACCCAGGCTACGTGGC  
 TCCAGAAGTGCTGGCCAGAAAACCTACAGCAAGGCTGTGGATTGCTGGTCCATCGGCGTATCACCTAC  
 ATATTGCTCTGTGGATACCCCGTTCTATGAAGAAACGGAGTCTAAGCTTTTCGAGAAGATCAAGGAGG  
 GCTACTATGAGTTTGAGTCTCCATTCTGGGATGACATTTCTGAGTCAGCAAGGACTTTATTTGCCACTT  
 GCTTGAGAAGGATCCGAACGAGCGGTACACCTGTGAGAAGGCCTTGGATCATCCCTGGATTGACGAAAAC  
 ACAGCCCTCCACCGGACATCTACCCATCAGTCAGCCTCCAGATCCAGAAGAAGTTCGCTAAGAGCAAGT  
 GGAGGCAAGCCTCAACGAGCAGCTGTGGTGCACCACATGAGGAAGCTACACATGAACCTGCACAGCCC  
 GGGCGTCCGCCAGAGGTGGAGAACAGGCCGCTGAAACTCAAGCCTCAGAAAACCTTAGACCCAGCTCC  
 CCTGAGATCACCATCACCAGGCACCTGTCTGGACCACAGTGTAGCACTCCCTGCCCTGACCAATTAC  
 CCTGCCAGATGGCCGCCGCCCCACTGCCCTGGTGGCAGTCCCTCAACTGCCTGGTCAATGGCTCCCT  
 CCACATCAGCAGCAGCCTGGTGCCCATGCATCAGGGGTCCCTGGCCGCCGGGCCCTGTGGCTGCTGCTCC  
 AGCTGCCTGAACATTGGGAGCAAAGGAAAGTCTCCTACTGCTCTGAGCCACACTCCTCAAAAAGGCCA  
 ACAAAAAACAGAAGTCAAGTCCGAGGTCATGGTACCAGTAAAGCCAGTGGCAGCTCCCACTGCCGGG  
 AGGGCAGACTGGAGTCTGTCTATTATG

**ACGCGT**ACGCGGCCGCTCGAGCAGAAACTCATCTCAGAAGAGGATCTGGCAGCAAATGATATCCTGGATT  
 ACAAGGATGACGACGATAAGGTTTAA

**Protein Sequence:**

>RC207444 protein sequence  
 Red=Cloning site Green=Tags(s)

MGRKEEDDCSSWKKQTTNIRKTFIFMEVLGSGAFSEVFLVKQRLTGKLFALKCIKSPAFRDSLENEIA  
 VLKKIKHENIVTLEDIYESTTHYYLVMQLVSGGELFDRILERGVYTEKASLVIQQVLSAVKYLHENGIV  
 HRDLKPENLLYL TPEENSKIMITDFGLSKMEQNGIMSTACGTPGYVAPEVLAQKPYSAVDCWSIGVITY  
 ILLCGYPPFYEETESKLFEKIKEGYEFESPFWDDISESAKDFICHILLEKDPNERYTCEKALSHPWIDGN  
 TALHRDIYPSVSLQIQKNFAKSKWRQAFNAAAVVHMRKLMNLSHSPGVRPEVENRPPETQASSETSRPSS  
 PEITITEAPVLDHSVALPALQLPCQHRRPTAPGGRSLNCLVNGSLHISSSLVPMHQGSLAAGPCGCCS  
 SCLNIGSKGKSSYCEPTLLKKANKQNFKSEVMVPVKASGSSHCRAQTGVCLIM

**TR**TRPLEQKLISEEDLAANDILDYKDDDDKV

**Chromatograms:**

[https://cdn.origene.com/chromatograms/mk6019\\_h07.zip](https://cdn.origene.com/chromatograms/mk6019_h07.zip)

**Restriction Sites:**

Sgfl-MluI

**Cloning Scheme:**

Cloning sites used for ORF Shutting:



\* The last codon before the Stop codon of the ORF

**ACCN:** NM\_020439

**ORF Size:** 1428 bp

**OTI Disclaimer:** The molecular sequence of this clone aligns with the gene accession number as a point of reference only. However, individual transcript sequences of the same gene can differ through naturally occurring variations (e.g. polymorphisms), each with its own valid existence. This clone is substantially in agreement with the reference, but a complete review of all prevailing variants is recommended prior to use. [More info](#)
**OTI Annotation:** This clone was engineered to express the complete ORF with an expression tag. Expression varies depending on the nature of the gene.

**Components:** The ORF clone is ion-exchange column purified and shipped in a 2D barcoded Matrix tube containing 10ug of transfection-ready, dried plasmid DNA (reconstitute with 100 ul of water).

**Reconstitution Method:**

1. Centrifuge at 5,000xg for 5min.
2. Carefully open the tube and add 100ul of sterile water to dissolve the DNA.
3. Close the tube and incubate for 10 minutes at room temperature.
4. Briefly vortex the tube and then do a quick spin (less than 5000xg) to concentrate the liquid at the bottom.
5. Store the suspended plasmid at -20°C. The DNA is stable for at least one year from date of shipping when stored at -20°C.

**RefSeq:** [NM\\_020439.3](#)
**RefSeq Size:** 2507 bp

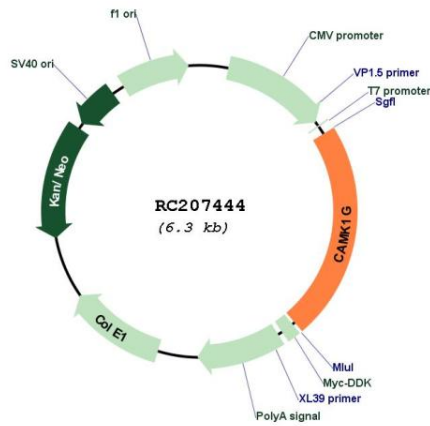
**RefSeq ORF:** 1431 bp

**Locus ID:** 57172

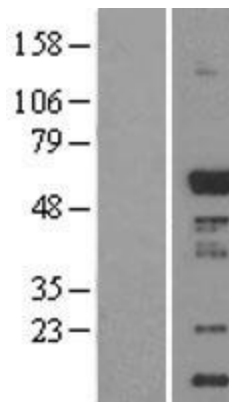
**UniProt ID:** [Q96NX5](#)
**Cytogenetics:** 1q32.2

**Domains:** pkinase, TyrKc, S\_TKc  
**Protein Families:** Druggable Genome, Protein Kinase  
**MW:** 53.1 kDa  
**Gene Summary:** This gene encodes a protein similar to calcium/calmodulin dependent protein kinase, however, its exact function is not known. [provided by RefSeq, Jul 2008]

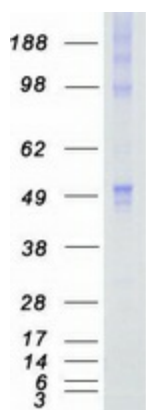
**Product images:**



Circular map for RC207444



Western blot validation of overexpression lysate (Cat# [LY402790]) using anti-DDK antibody (Cat# [TA50011-100]). Left: Cell lysates from untransfected HEK293T cells; Right: Cell lysates from HEK293T cells transfected with RC207444 using transfection reagent MegaTran 2.0 (Cat# [TT210002]).



Coomassie blue staining of purified CAMK1G protein (Cat# [TP307444]). The protein was produced from HEK293T cells transfected with CAMK1G cDNA clone (Cat# RC207444) using MegaTran 2.0 (Cat# [TT210002]).