

Product datasheet for **RC207443**

SPZ1 (NM_032567) Human Tagged ORF Clone

Product data:

Product Type:	Expression Plasmids
Product Name:	SPZ1 (NM_032567) Human Tagged ORF Clone
Tag:	Myc-DDK
Symbol:	SPZ1
Synonyms:	CILD38; NYD-TSP1; PPP1R148
Mammalian Cell Selection:	Neomycin
Vector:	pCMV6-Entry (PS100001)
E. coli Selection:	Kanamycin (25 ug/mL)



[View online »](#)

ORF Nucleotide Sequence:

>RC207443 ORF sequence
 Red=Cloning site Blue=ORF Green=Tags(s)

TTTTGTAATACGACTCACTATAGGGCGGCCGGAATTCGTCGACTGGATCCGGTACCGAGGAGATCTGCC
 GCC**CGGATCGCC**

ATGCCAGCTCTGCTAAGTCAGCTGAGATGCCACCATCTCCAAAACCCCTAACCTACTCTGATCCTC
 ATCAAGAATATCTGGACCCTAGGATTACCATTCGCTTATTTCGAAATTGGATCACATTCCCCTCCTCCTG
 GGGCTCTCCTCCTTCTAAAGAATAGCAGCCATCAAGTTACAGAACAACAGACTGCACAGAAGTTAAC
 AATCTCTTAAAAGAAATTAAGATATTCTTAAAAATATGGCAGGTTTTGAAGAGAAGATCACAGAAGCAA
 AAGAACTTTTTGAGGAAACCAATATTACTGAGGATGTGTCAGCCACAAAGAAAAATCAGAGGACTTGA
 CAAAATCAATGAAATGTTATCAACAAACCTGCCTGTTAGTTTAGCCCCAGAGAAAGAACAATGAAAAG
 AAACAGGAGATGATTTGGAAACCAATATTACTGAGGATGTGTCAGCCACAAAGAAAAATCAGAGGAC
 TTGACAAAATCAATGAAATGTTATCAACAAACCTGCCTGTTAGTTTAGCCCCAGAGAAAGAACAATGA
 AAAGAAACAGCAGATGATAATGGAAAACCAAGACTCTGAGAACACCGCACAGTTTTTTGCAAGAGATTTG
 GTAATCGTTTAGAAGAAAAAAGTCCTTAACGAAACTCAACAAAGTCAGGAAAAAGCAAAAAACAGAC
 TTAATGTTCAAGAAGAACTATGAAAATTAGGAACAACATGGAGCAGTTACTACAGGAAGCAGAACACTG
 GAGTAAACAACATACTGAGCTCAGTAAACTGATAAAATCCTATCAGAAATCTCAGAAAGACATAAGTGAA
 ACTCTTGAAAATAATGGAGTCGGTTTTCCAAACCCAGCCAAATAATGAAGTGTCCGGCTAAGCATGAGCTGG
 AGGAACAGGTGAAGAACTGAGCCATGACACCTATTTCATTGCAGTTGATGGCAGCTTTGCTAGAGAATGA
 ATGCCAAATCTTACAGCAGAGAGTAGAGATTCTCAAGGAACTCCATCATCAGAAACAGGGAACTCTGCA
 GAGAAGCCAATTCAGATAAACTATAACAGGACAAGAAAAATCAGAAGCCATCAGAAGCAAGAAAGTAG
 AAATGTATAAGCAGAACAAGCAAGCAATGAAGGGTACATTTTGGAAAAAAGACAGATCCTGTAGAAGCCT
 GGATGTTTGTCTTAATAAGAAAGCTTGAATACCCAGTCAATATTCATGTTGCAAGAAAAGCTCTTAGG
 GAAAAATGAGGTCAGCTAGCAGCCTAAGA

ACGCGTACGCGGCCGCTCGAGCAGAAACTCATCTCAGAAGAGGATCTGGCAGCAAATGATATCCTGGATT
 ACAAGGATGACGACGATAAGGTTTAA

Protein Sequence:

>RC207443 protein sequence
 Red=Cloning site Green=Tags(s)

MASSAKSAEMPTISKTLNPTDPHQEYLDPRITIALFEIGSHSPSSWGSPLFLKNSSHQVTEQQTAKQFN
 NLLKEIKDILKNMAGFEEKITEAKELFEETNITEDVSAHKENIRGLDKINEMLSTNLPVSLAPEKEDNEK
 KQEMILETNITEDVSAHKENIRGLDKINEMLSTNLPVSLAPEKEDNEKKQMMIMENQNSENTAQVFARDL
 VNRL EEEKVLNETQQSQEKAKNRLNVQEETMKIRNMEQLLQEAHWSKQHTELSKLIKSYQKSQKDI SE
 TLGNNGVGFQTQPNNEVSAKHELEEVKKL SHDTYSLQLMAALLENECQILQQRVEILKELHHQKQGT LQ
 EKPIQINYKQDKKNQKPS EAKK VEMYKQNKQAMKGTFWKKDRSCRSLDVCLNKKACNTQFN I HVARKALR
 GKMR SASSLR

TRTRPLEQKLISEEDLAANDILDYKDDDDKV

Chromatograms:

https://cdn.origene.com/chromatograms/mk6335_a06.zip

Restriction Sites:

SgfI-MluI

Cloning Scheme:


ACCN: NM_032567

ORF Size: 1290 bp

OTI Disclaimer: The molecular sequence of this clone aligns with the gene accession number as a point of reference only. However, individual transcript sequences of the same gene can differ through naturally occurring variations (e.g. polymorphisms), each with its own valid existence. This clone is substantially in agreement with the reference, but a complete review of all prevailing variants is recommended prior to use. [More info](#)

OTI Annotation: This clone was engineered to express the complete ORF with an expression tag. Expression varies depending on the nature of the gene.

Components: The ORF clone is ion-exchange column purified and shipped in a 2D barcoded Matrix tube containing 10ug of transfection-ready, dried plasmid DNA (reconstitute with 100 ul of water).

- Reconstitution Method:**
1. Centrifuge at 5,000xg for 5min.
 2. Carefully open the tube and add 100ul of sterile water to dissolve the DNA.
 3. Close the tube and incubate for 10 minutes at room temperature.
 4. Briefly vortex the tube and then do a quick spin (less than 5000xg) to concentrate the liquid at the bottom.
 5. Store the suspended plasmid at -20°C. The DNA is stable for at least one year from date of shipping when stored at -20°C.

RefSeq: [NM_032567.2](#), [NP_115956.2](#)

RefSeq Size: 1873 bp

RefSeq ORF: 1293 bp

Locus ID: 84654

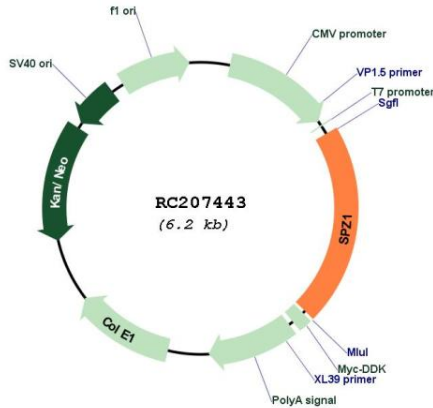
UniProt ID: [Q9BXG8](#)

Cytogenetics: 5q14.1

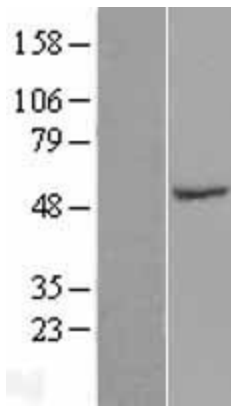
MW: 49.5 kDa

Gene Summary: This gene encodes a bHLH-zip transcription factor which functions in the mitogen-activate protein kinase (MAPK) signaling pathway. Because of its role in the upregulation of cell proliferation and tumorigenesis, this gene may serve as a target for Ras-induced tumor treatments. [provided by RefSeq, Oct 2011]

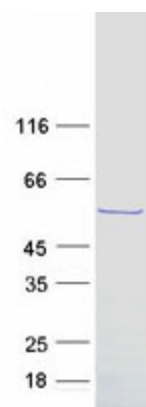
Product images:



Circular map for RC207443



Western blot validation of overexpression lysate (Cat# [LY410025]) using anti-DDK antibody (Cat# [TA50011-100]). Left: Cell lysates from untransfected HEK293T cells; Right: Cell lysates from HEK293T cells transfected with RC207443 using transfection reagent MegaTran 2.0 (Cat# [TT210002]).



Coomassie blue staining of purified SPZ1 protein (Cat# [TP307443]). The protein was produced from HEK293T cells transfected with SPZ1 cDNA clone (Cat# RC207443) using MegaTran 2.0 (Cat# [TT210002]).