

Product datasheet for **RC207441**

ARHGEF39 (NM_032818) Human Tagged ORF Clone

Product data:

Product Type:	Expression Plasmids
Product Name:	ARHGEF39 (NM_032818) Human Tagged ORF Clone
Tag:	Myc-DDK
Symbol:	ARHGEF39
Synonyms:	C9orf100
Mammalian Cell Selection:	Neomycin
Vector:	pCMV6-Entry (PS100001)
E. coli Selection:	Kanamycin (25 ug/mL)
ORF Nucleotide Sequence:	>RC207441 ORF sequence Red=Cloning site Blue=ORF Green=Tags(s)

TTTTGTAATACGACTCACTATAGGGCGCCGGGAATTCGTCGACTGGATCCGGTACCGAGGAGATCTGCC
GCC**CGATCGCC**

ATGGAGCTCTCCTGCCCGGTTTCGCGGTGCCCGGTGCAAGAGCAGCGTGCCCGCTGGGAGCGGAAACGCG
CCTGCACCGCCCGGAGCTGCTAGAGACCGAGCGGCGCTACCAAGAAGAGCTGGGGCTGGTGCCACGTA
CTTTTGGGGATCCTGAAAGCCAAGGGGACCCTGCGACCCTGAGCGCCAGGCCCTGTTGGCTCCTGG
GAGCTCATCTACGGCGCCAGCCAGGAGCTGCTCCCTACCTGGAAGGAGGATGCTGGGGCCAAGGGCTGG
AGGGCTTCTGCCGCACTTGGAGCTCTATAACCAATTTGCTGCCAACTCAGAGAGGTCCCAGACCACCT
GCAGGAGCAGCTAAAGAAAAATAAGGTTTCCGGAGGTTTGTACGGCTTCAGGAAGGCCCGCCTGAGTTT
GGGGGCTTCAGCTCCAGGACCTGCTCCCTCTGCCTCTGCAACGGCTCCAGCAGTATGAGAATCTCGTCG
TAGCTTTGGCTGAAAACACAGGTCCCAACAGCCCTGACCATCAACAGCTCACACGGGCTGCCGACTGAT
AAGTGAGACTGCCAGAGAGTCCATACTATTGGTCAGAAAAGAAAGATGACCAGCACCTTCGGCGTGTC
CAGGCTCTGCTCAGTGGACGCCAGGCAAAGGGGCTGACCTCAGGGCGCTGGTTCCTACGCCAGGGCTGGC
TGTTAGTGGTGCCTCCCATGGGGAGCCTCGGCCCGCATGTTCTTCTTCACTGATGTGCTCCTCAT
GGCCAAGCCTCGGCTCCACTGCACCTGCTGCGGAGTGGCACCTTTGCCTGCAAGGCCCTACCCCATG
GCCCAGTGTATCTCAGCAGGGTCTTTGGCCACTCAGGAGGCCCTTGTTGGTGGTTGCTCAGTCTGTCT
TCCCTCATGAGAAGCTACTGCTTATGTCCACAGACCAGGAGGAGTGTACGCTGGTACCCAGTCTGAC
TTGGGCTATCAGCAGCCAGAAAAAC

ACGCGTACGCGGCCGCTCGAGCAGAAACTCATCTCAGAAGAGGATCTGGCAGCAAATGATATCCTGGATT
ACAAGGATGACGACGATAAGGTTTAA



[View online »](#)

Protein Sequence: >RC207441 protein sequence
Red=Cloning site Green=Tags(s)

MELSCPGRCPVQEQRARWERKRACTARELLETERRYQEQLGLVATYFLGILKAKGTLRPPPERQALFGSW
 ELIYGASQELLPYLEGGCWGQGLEGFCHRLELYNQFAANSERSQTTLQEQLKKNKGFRRFVRLQEGRPEF
 GGLQLQDLLPLPLQRLQYENLVVALAENTGPNSPDHQQLTRAARLISETAQRVHTIGQKQKNDQHLRRV
 QALLSGRQAKGLTSGRWFLRQGWLLVPPHGEPRPMFFLFTDVLMLAKPRPPLHLLRSGLTFACKALYPM
 AQCHLSRVFVGHSGGPCGGLLSLSPHEKLLLMSTDQEELSRWYHSLTWAISSQKN

TRTRPLEQKLISEEDLAANDILDYKDDDDKV

Chromatograms: https://cdn.origene.com/chromatograms/mk6334_a04.zip

Restriction Sites: SgfI-MluI

Cloning Scheme:



ACCN: NM_032818

ORF Size: 1005 bp

OTI Disclaimer: The molecular sequence of this clone aligns with the gene accession number as a point of reference only. However, individual transcript sequences of the same gene can differ through naturally occurring variations (e.g. polymorphisms), each with its own valid existence. This clone is substantially in agreement with the reference, but a complete review of all prevailing variants is recommended prior to use. [More info](#)

OTI Annotation: This clone was engineered to express the complete ORF with an expression tag. Expression varies depending on the nature of the gene.

Components: The ORF clone is ion-exchange column purified and shipped in a 2D barcoded Matrix tube containing 10ug of transfection-ready, dried plasmid DNA (reconstitute with 100 ul of water).

Reconstitution Method:

1. Centrifuge at 5,000xg for 5min.
2. Carefully open the tube and add 100ul of sterile water to dissolve the DNA.
3. Close the tube and incubate for 10 minutes at room temperature.
4. Briefly vortex the tube and then do a quick spin (less than 5000xg) to concentrate the liquid at the bottom.
5. Store the suspended plasmid at -20°C. The DNA is stable for at least one year from date of shipping when stored at -20°C.

RefSeq: [NM_032818.3](#)

RefSeq Size: 3763 bp

RefSeq ORF: 1008 bp

Locus ID: 84904

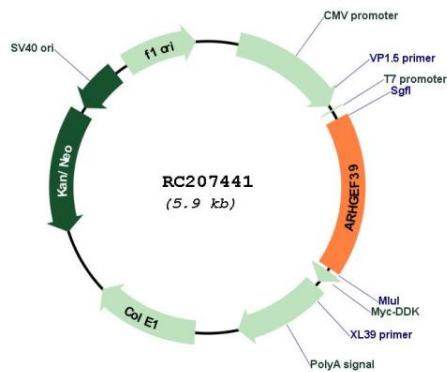
UniProt ID: [Q8N4T4](#)

Cytogenetics: 9p13.3

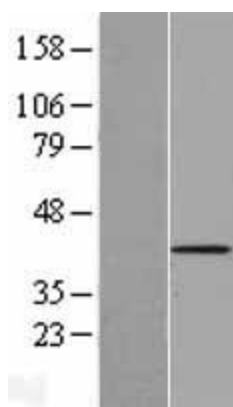
MW: 38.3 kDa

Gene Summary: Promotes cell proliferation.[UniProtKB/Swiss-Prot Function]

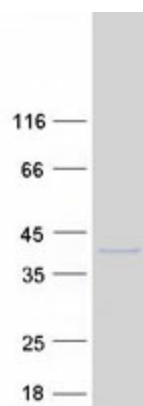
Product images:



Circular map for RC207441



Western blot validation of overexpression lysate (Cat# [LY409945]) using anti-DDK antibody (Cat# [TA50011-100]). Left: Cell lysates from untransfected HEK293T cells; Right: Cell lysates from HEK293T cells transfected with RC207441 using transfection reagent MegaTran 2.0 (Cat# [TT210002]).



Coomassie blue staining of purified ARHGEF39 protein (Cat# [TP307441]). The protein was produced from HEK293T cells transfected with ARHGEF39 cDNA clone (Cat# RC207441) using MegaTran 2.0 (Cat# [TT210002]).