

## Product datasheet for **RC207440**

### MPND (NM\_032868) Human Tagged ORF Clone

#### Product data:

Product Type:	Expression Plasmids
Product Name:	MPND (NM_032868) Human Tagged ORF Clone
Tag:	Myc-DDK
Symbol:	MPND
Mammalian Cell Selection:	Neomycin
Vector:	pCMV6-Entry (PS100001)
E. coli Selection:	Kanamycin (25 ug/mL)



[View online »](#)

**ORF Nucleotide Sequence:**

>RC207440 representing NM\_032868  
 Red=Cloning site Blue=ORF Green=Tags(s)

TTTTGTAATACGACTCACTATAGGGCGGCCGGGAATTCGTCGACTGGATCCGGTACCGAGGAGATCTGCC  
 GCC**CGGATCGCC**

ATGGCAGCTCCGGAGCCGCTGTCCCGGGCGGGCGGTGCGGGCAGGAGGCCCGGAGGAGACGAGGACG  
 AAGCGGAGGCCGAGGACCTGAGCGGCCGAATGCGGGAGCGGGCGGTGGACGCAGTGGCGCGGCCGCGAG  
 TAGCGTCAGCGGAGGAGCGCGCGCGGGCCGGAGCGGGGGCTGCGGCGGGCCCGGGGCGCGCTC  
 ACCAGGCGCGCGGTCACTGCGGGTGTCTCTCAAAGACGCGCTGCTGGAGCCTGGCGCGGGGTGTGT  
 CCATCTACTACCTGGGAAGAAGTTCCTGGGCGACCTGCAGCCAGACGGAAGGATCATGTGCAGGAGAC  
 CGGGCAGACCTTCAACTACCCAGCGCTGGGCCACCCACTGCAAGAAGCTGGTGAACCTGCCAAGAAG  
 TCGGGTGTGGCTGGCCTCTGTCAAGTCAAAGGCCAGAACTGGACAAGTCAAAGCCACCTGGCTCC  
 GGCTGCACCAGCTGCACACGCTGCCACGGCTGTGATGAGAGCCAGCCAGTGAAGGGGAGGAGGAGGA  
 GTTGCTGATGGAAGAGGAGGAGGAGGACGTTCTGGCGGGGTCTCAGCAGAGGACAAGAGTCGGAGACCA  
 CTGGGGAAGAGCCCTTCAGAGCCTGCCACCCGAGGCCACAACCCAGGGAAGCGGGTGGACAGCAAGA  
 TCCGGTTCCGGTCCGCTACTGCATGCTGGCAGCCGCGACTTGGCCAGGAACCCCCACACCTGTTGGA  
 AGTAACATCCTTTCAGCCATCAACAAGTTCAGCCGTTCAACGTGGCTGTTTCTAGCAACGTGCTGTTT  
 CTGCTGGACTTCCACAGTCACTGACACGGAGTGGTGGTACCTGGGGGCGCTGGGACGTCA  
 ACAGCCAGATGCTGACGGTGTCTAGAGCCTTCCCTTGTGCGAGCCGGCTCGGGGACGCAGAGACTGCAGC  
 TGCCATCGAAGAGGAGATCTACCAGAGCCTGTTCTGCGGGCCGTCCCTGGTGGGCTGGTACCACAGC  
 CACCCACACAGCCCGCGCTGCCATCTCTGCAGGACATCGACGCACAGATGGACTACCAGCTGCGGCTGC  
 AGGGCTCCAGCAATGGCTTCCAGCCCTGCCTGCCTGCTCCCTTACTATTCTGGCAACCCAGG  
 CCCCAGTCCAAGATCTGCCTTCTGGGTGATGCCTCCTCCCGAGATGCTGCTGGTGGAGTTCTACAAG  
 GGTCCCTGACCTCGTGAAGCTCCAGGAACCTGGAGCCAGGAGCACACCTACCTCGACAAGCTTAAGA  
 TCTCCTTGGCCAGCAGGACGCCAAGGACCAGAGCCTGTGTCACGTCTGGAACAGGTGTGCGGCTCCT  
 CAAGCAGGGGAGC

**ACGGGCCGCTCGAGCAGAACTCATCTCAGAAGAGGATCTGGCAGCAAATGATATCCTGGA**  
**TTACAAGGATGACGACGATAAAGTTTAA**

**Protein Sequence:**

>RC207440 representing NM\_032868  
 Red=Cloning site Green=Tags(s)

MAAPEPLSPAGGAGEEAPPEDEDEAEAEADPERPNAGAGGGRSGGGSSVSGGGGGGAGAGGCGPGGAL  
 TRRAVTLRVLLKDALLEPGAGVLSIYYLGKKFLGDLQPDGRIMWQETGQTFNPSAWATHCKKLVNPAKK  
 SGCGWASVKYKQKLDKYKATWLRHLHQLHTPATAADESPASEGEEEEELMEEEEEDVLAGVSAEDKSRRP  
 LGKSPSEPAHPEATTPGKRVDKIRVPVRYCMLGSRDLARNPHTLVEVTSFAAINKFQPFNVAVSSNVLF  
 LLDHFHSHLTRSEVVGYLGGRWVNSQMLTVLRAFPSCRSLGDAETAAAIIEEIIYQSLFLRGLSLVGWYHS  
 HPHSPALPSLQDIDAQMDYQLRLQGSSNGFQPCLALLCSPYYSNPGPESKISPFWVMPPEMLLVEFYK  
 GSPDLVRLQEPWSQEHTYLDKLIKISLARSRTPKDQSLCHVLEQVCGVLKQGS

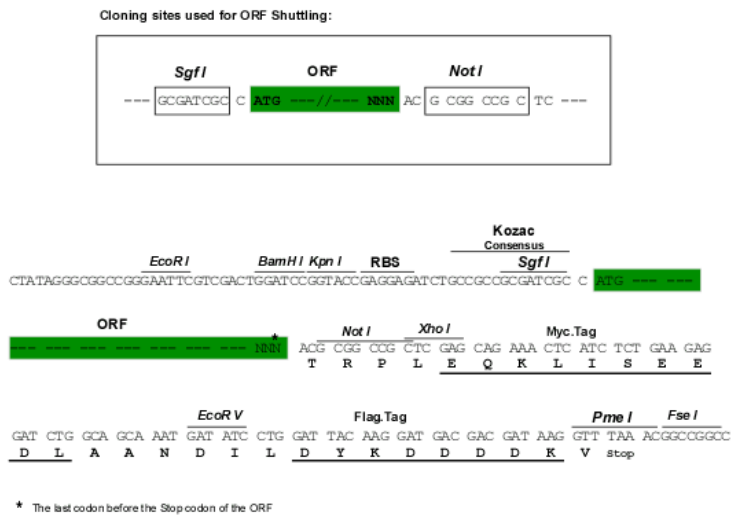
**TRRLEQKLI SEEDLAANDILDYKDDDDKV**

**Chromatograms:**

[https://cdn.origene.com/chromatograms/mg4326\\_h05.zip](https://cdn.origene.com/chromatograms/mg4326_h05.zip)

**Restriction Sites:**

SgfI-NotI

**Cloning Scheme:**


**ACCN:** NM\_032868

**ORF Size:** 1413 bp

**OTI Disclaimer:** The molecular sequence of this clone aligns with the gene accession number as a point of reference only. However, individual transcript sequences of the same gene can differ through naturally occurring variations (e.g. polymorphisms), each with its own valid existence. This clone is substantially in agreement with the reference, but a complete review of all prevailing variants is recommended prior to use. [More info](#)

**OTI Annotation:** This clone was engineered to express the complete ORF with an expression tag. Expression varies depending on the nature of the gene.

**Components:** The ORF clone is ion-exchange column purified and shipped in a 2D barcoded Matrix tube containing 10ug of transfection-ready, dried plasmid DNA (reconstitute with 100 ul of water).

**Reconstitution Method:**

1. Centrifuge at 5,000xg for 5min.
2. Carefully open the tube and add 100ul of sterile water to dissolve the DNA.
3. Close the tube and incubate for 10 minutes at room temperature.
4. Briefly vortex the tube and then do a quick spin (less than 5000xg) to concentrate the liquid at the bottom.
5. Store the suspended plasmid at -20°C. The DNA is stable for at least one year from date of shipping when stored at -20°C.

**RefSeq:** [NM\\_032868.3](#)

**RefSeq Size:** 1530 bp

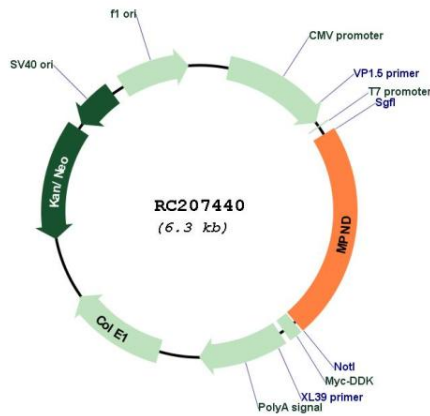
**RefSeq ORF:** 1416 bp

**Locus ID:** 84954

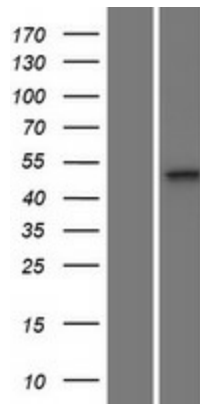
**UniProt ID:** [Q8N594](#)

**Cytogenetics:** 19p13.3  
**Domains:** JAB\_MPN  
**Protein Families:** Druggable Genome, Transcription Factors  
**MW:** 50.5 kDa  
**Gene Summary:** Probable protease.[UniProtKB/Swiss-Prot Function]

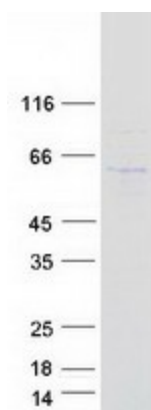
**Product images:**



Circular map for RC207440



Western blot validation of overexpression lysate (Cat# [LY409901]) using anti-DDK antibody (Cat# [TA50011-100]). Left: Cell lysates from untransfected HEK293T cells; Right: Cell lysates from HEK293T cells transfected with RC207440 using transfection reagent MegaTran 2.0 (Cat# [TT210002]).



Coomassie blue staining of purified MPND protein (Cat# [TP307440]). The protein was produced from HEK293T cells transfected with MPND cDNA clone (Cat# RC207440) using MegaTran 2.0 (Cat# [TT210002]).