

Product datasheet for **RC207436**

BOULE (BOLL) (NM_033030) Human Tagged ORF Clone

Product data:

Product Type:	Expression Plasmids
Product Name:	BOULE (BOLL) (NM_033030) Human Tagged ORF Clone
Tag:	Myc-DDK
Symbol:	BOULE
Synonyms:	BOULE
Mammalian Cell Selection:	Neomycin
Vector:	pCMV6-Entry (PS100001)
E. coli Selection:	Kanamycin (25 ug/mL)
ORF Nucleotide Sequence:	>RC207436 ORF sequence Red=Cloning site Blue=ORF Green=Tags(s)

TTTTGTAATACGACTCACTATAGGGCGCCGGGAATTCGTCGACTGGATCCGGTACCGAGGAGATCTGCC
GCC**CGGATCGCC**

ATGCAACAGATTCATTATCTCCATCCCCTAATCCTGTGTACCTGTGCCTTTGAATAACCCAACAAGTG
CCCAAGATATGGAACAGTGATCCCTAATCGCATCTTTGTAGGAGGAATTGATTTAAGACAAACGAAAG
TGATTTAAGAAAATTTTTCCAGTATGGGTCTGTGAAAGAAGTAAGATTGAAATGACAGAGCTGGA
GTATCAAAGGGTATGGTTTCGTCACCTTTGAAACACAAGAAGATGCACAAAAAATTTACAAGAGGCTG
AAAACTTAATTATAAGGATAAGAAGCTGAACATTGGTCCAGCAATAAGAAAACAACAAGTAGGGATCCC
TCGTTCTAGTATAATGCCAGCAGCTGGAACAATGTATCTAACAACCTCAACTGGATATCCTTATACTTAC
CATAATGGTGTGCTTATTTTCATACTCCAGAGGTAACCTCGGTCCCACCGCCTTGGCCTTCACGTTCTG
TATGTAGCTCCCCTGTGATGGTAGCTCAGCCATTTATCAGCAACCTGCATATCACTACCAGGCCACCAC
ACAGTATTTACCAGGACAGTGGCAGTGGAGTGTTCCTCAGCCTTCTGCCTCTTCTGCTCCATTCTTATAC
CTGCAACCTTCTGAGGTTATTTATCAACCAGTGAAATTCACAGGATGGTGGATGTGTTCTCTCCAC
TGTCTGATGGAACCTCAGTTCAGAGCCTTATTCTGATCATGGAGTCAAGCAACATATCACCAGGT
TTATGCTCCAAGTGCCATCACTATGCCTGCGCCTGTGATGCAGCCTGAGCCAATTAACAGTGTGGAGC
ATTCATTAT

ACGCGTACGCGGCCGCTCGAGCAGAACTCATCTCAGAAGAGGATCTGGCAGCAAATGATATCCTGGATT
ACAAGGATGACGACGATAAGGTTTAA



[View online »](#)

Protein Sequence: >RC207436 protein sequence
Red=Cloning site Green=Tags(s)

MQTDSLSPSPNPVSPVPLNNPTSAPRYGTVIPNRIFVGGIDFKTNESDLRKFFSQYGSVKEVKIVNDRAG
VSKGYGFVTFETQEDAQKILQEAELKNYKDKLNIQPAIRKQQVGI PRSSIMPAAGTMYLTTSTGYPTY
HNGVAYFHTPEVTSVPPPWPSRVS SSSPVMVAQPIYQQPAYHYQATTQYLPGWQWSVPQPSASSAPFLY
LQPSEVIYQPVEIAQDGGCVPPPLSLMETSVPPEYSDHGVQATYHQVYAPSAITMPAPVMQPEPIKTVWS
IHY

TRTRPLEQKLISEEDLAANDILDYKDDDDKV

Chromatograms: https://cdn.origene.com/chromatograms/mk6517_e01.zip

Restriction Sites: SgfI-MluI

Cloning Scheme:



ACCN: NM_033030

ORF Size: 849 bp

OTI Disclaimer: The molecular sequence of this clone aligns with the gene accession number as a point of reference only. However, individual transcript sequences of the same gene can differ through naturally occurring variations (e.g. polymorphisms), each with its own valid existence. This clone is substantially in agreement with the reference, but a complete review of all prevailing variants is recommended prior to use. [More info](#)

OTI Annotation: This clone was engineered to express the complete ORF with an expression tag. Expression varies depending on the nature of the gene.

Components: The ORF clone is ion-exchange column purified and shipped in a 2D barcoded Matrix tube containing 10ug of transfection-ready, dried plasmid DNA (reconstitute with 100 ul of water).

Reconstitution Method:

1. Centrifuge at 5,000xg for 5min.
2. Carefully open the tube and add 100ul of sterile water to dissolve the DNA.
3. Close the tube and incubate for 10 minutes at room temperature.
4. Briefly vortex the tube and then do a quick spin (less than 5000xg) to concentrate the liquid at the bottom.
5. Store the suspended plasmid at -20°C. The DNA is stable for at least one year from date of shipping when stored at -20°C.

RefSeq: [NM_033030.6](#)

RefSeq Size: 2842 bp

RefSeq ORF: 852 bp

Locus ID: 66037

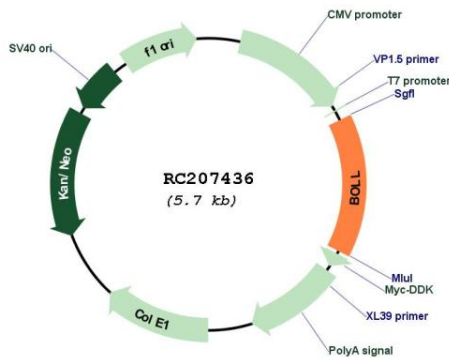
UniProt ID: [Q8N9W6](#)

Cytogenetics: 2q33.1

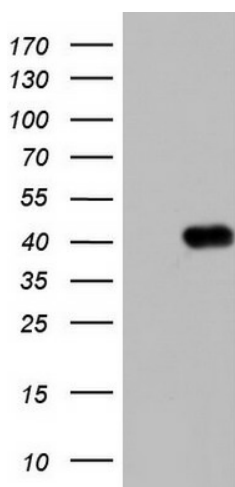
MW: 31.3 kDa

Gene Summary: This gene belongs to the DAZ gene family required for germ cell development. It encodes an RNA-binding protein which is more similar to Drosophila Boule than to human proteins encoded by genes DAZ (deleted in azoospermia) or DAZL (deleted in azoospermia-like). Loss of this gene function results in the absence of sperm in semen (azoospermia). Histological studies demonstrated that the primary defect is at the meiotic G2/M transition. Two alternatively spliced transcript variants encoding distinct isoforms have been found for this gene. [provided by RefSeq, Jul 2008]

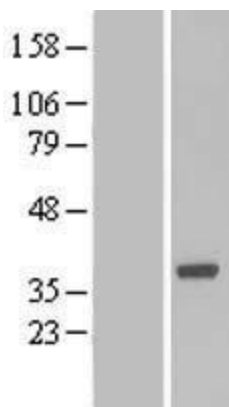
Product images:



Circular map for RC207436



HEK293T cells were transfected with the pCMV6-ENTRY control (Cat# [PS100001], Left lane) or pCMV6-ENTRY BOLL (Cat# RC207436, Right lane) cDNA for 48 hrs and lysed. Equivalent amounts of cell lysates (5 ug per lane) were separated by SDS-PAGE and immunoblotted with anti-BOLL (Cat# [TA804110]). Positive lysates [LY409790] (100ug) and [LC409790] (20ug) can be purchased separately from OriGene.



Western blot validation of overexpression lysate (Cat# [LY409790]) using anti-DDK antibody (Cat# [TA50011-100]). Left: Cell lysates from untransfected HEK293T cells; Right: Cell lysates from HEK293T cells transfected with RC207436 using transfection reagent MegaTran 2.0 (Cat# [TT210002]).