

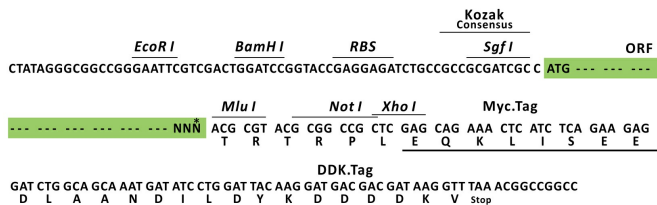
Product datasheet for RC207435L1

Rho guanine exchange factor 15 (ARHGEF15) (NM_173728) Human Tagged Lenti ORF Clone

Product data:

Product Type:	Expression Plasmids
Tag:	Myc-DDK
Symbol:	Rho guanine exchange factor 15
Synonyms:	ARGEF15; E5; Ephexin5; Vsm-RhoGEF
Mammalian Cell	None
Selection:	
Vector:	pLenti-C-Myc-DDK (PS100064)
E. coli Selection:	Chloramphenicol (34 ug/mL)
ORF Nucleotide Sequence:	The ORF insert of this clone is exactly the same as(RC207435).
Restriction Sites:	SgfI-MluI
Cloning Scheme:	

Cloning sites used for ORF Shuttling:



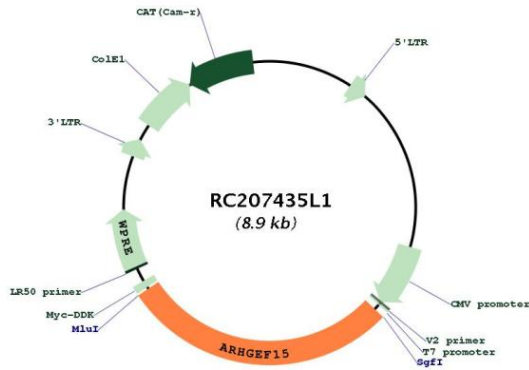
* The last codon before the Stop codon of the ORF.

ACCN:	NM_173728
ORF Size:	2523 bp

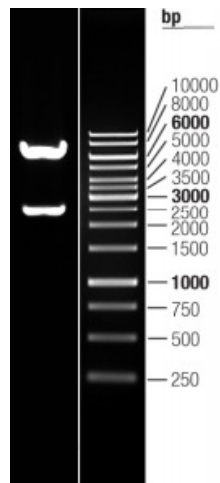


OTI Disclaimer:	The molecular sequence of this clone aligns with the gene accession number as a point of reference only. However, individual transcript sequences of the same gene can differ through naturally occurring variations (e.g. polymorphisms), each with its own valid existence. This clone is substantially in agreement with the reference, but a complete review of all prevailing variants is recommended prior to use. More info
OTI Annotation:	This clone was engineered to express the complete ORF with an expression tag. Expression varies depending on the nature of the gene.
Components:	The ORF clone is ion-exchange column purified and shipped in a 2D barcoded Matrix tube containing 10ug of transfection-ready, dried plasmid DNA (reconstitute with 100 ul of water).
Reconstitution Method:	<ol style="list-style-type: none"> 1. Centrifuge at 5,000xg for 5min. 2. Carefully open the tube and add 100ul of sterile water to dissolve the DNA. 3. Close the tube and incubate for 10 minutes at room temperature. 4. Briefly vortex the tube and then do a quick spin (less than 5000xg) to concentrate the liquid at the bottom. 5. Store the suspended plasmid at -20°C. The DNA is stable for at least one year from date of shipping when stored at -20°C.
Note:	Plasmids are not sterile. For experiments where strict sterility is required, filtration with 0.22um filter is required.
RefSeq:	NM_173728.2
RefSeq Size:	4220 bp
RefSeq ORF:	2526 bp
Locus ID:	22899
UniProt ID:	O94989
Cytogenetics:	17p13.1
MW:	92 kDa
Gene Summary:	Rho GTPases play a fundamental role in numerous cellular processes that are initiated by extracellular stimuli that work through G protein-coupled receptors. This gene encodes a protein that functions as a specific guanine nucleotide exchange factor for RhoA. It also interacts with ephrin A4 in vascular smooth muscle cells. Two alternatively spliced transcripts variants that encode the same protein have been found for this gene. [provided by RefSeq, Aug 2010]

Product images:



Circular map for RC207435L1



Double digestion of RC207435L1 using SgfI and MluI