

Product datasheet for **RC207433**

KIF2B (NM_032559) Human Tagged ORF Clone

Product data:

Product Type:	Expression Plasmids
Product Name:	KIF2B (NM_032559) Human Tagged ORF Clone
Tag:	Myc-DDK
Symbol:	KIF2B
Mammalian Cell Selection:	Neomycin
Vector:	pCMV6-Entry (PS100001)
E. coli Selection:	Kanamycin (25 ug/mL)



[View online »](#)

**ORF Nucleotide
Sequence:**

>RC207433 ORF sequence
 Red=Cloning site Blue=ORF Green=Tags(s)

TTTTGTAATACGACTCACTATAGGGCGGCCGGAATTCGTCGACTGGATCCGGTACCGAGGAGATCTGCC
 GCC**CGCATCGCC**

ATGCCAGCCAGTTCTGCCTCCCTGAATCCCCATGTCTCTCGCCCCTGAAACCCCTGAAGCCACATTTCCG
 GAGACATCCAAGAGGGCATCTACGTGGCGATCCAGCGCAGTGACAAGCGGATCCACCTCGCTGTGGTCAC
 GGAGATCAACAGAGAAAACTATTGGGTCACGGTAGAGTGGGTGGAGAAAGCAGTCAAAAAAGGCAAGAAG
 ATTGACCTGGAGACCATACTCTGCTGAATCCAGCTCTGGACTCTGCTGAACACCCCATGCCGCCCCCGC
 CCTTATCCCCCTTGGCTCTGGCGCCCTCTCGGCCATCAGGGACCAGCGTACCGCCACGAAATGGGTTGC
 GATGATCCCCAGAAAAACCAACAGCCTCAGGGGACAGCCTGGATGTGAGGGTCCCCAGCAAACCTTGT
 CTGATGAAGCAGAAAAAGTCTCCCTGCCTCTGGGAAATCCAGAACTGCAGGAGCAGCGGAAAAAGCGCA
 GCGCGCTGCAGCAGGAGATCCGAGCTAGACGCGCCCTCGATGTCAATACCAGAAACCCCACTACGAAAT
 CATGCACATGATCGAAGAGTATCGCAGGCACCTGGACAGCAGCAAGATCTCAGTCTGGAGCCCCGCAA
 GAACATCGCATCTGCGTCTGCGTGAGGAAGCGGCCTCTCAACCAGCGAGAGACAACCTTGAAGGACCTGG
 ATATCATCACCGTCCCCTCGGACAATGTGGTTATGGTGCATGAGTCCAAGCAAAAGGTGGACCTCACTCG
 CTACCTGCAGAACCAGACCTTCTGCTTCGACCATGCCTTCGATGACAAAGCCTCCAACGAGTTGGGTGAC
 CAGTTCACCGCCAGCCACTGGTGGAGTCCATCTTCCGCAAGGGCATGGCCACCTGCTTTGCCTATGGGC
 AGACGGGAAGTGGGAAGACGTACACCATGGGTGGAGACTTTTCAGGAACGGCCCAAGATTGTTCTAAGGG
 CATTATGCTTTGGTGGCACAGGATGTCTTCTCCTGCTCAGAACTCCACATATGAGAAGCTGGACCTC
 AAAGTCTATGGGACATTTTTGAGATTTATGGGGCAAGGTGTATGATTTGTTGAACTGGAAGAAGAAGC
 TGCAAGTCCCTTGAGGATGGCAATCAGCAAATCCAAGTGGTGGGCTGCAGGAGAAAGAGGTGTGTTGTGT
 GGAGGAAGTGTGAACCTGGTGGAAATAGGGAATAGCTGTGCGACTTCCAGGCAAAACATCTGTCAACGCT
 CACTCATCCAGGACCATGCAGTGTCCAGATCATCCTGAAGTCAAGGAGGATAATGCATGGCAAGTTTT
 CCCTCGTTGATTTAGCTGGGAATGAAAGAGGAGCAGATACAACCAAGGCCAGCCGAAAAAGGCAGCTGGA
 AGGGGCAGAGATTAACAAGAGTCTTCTAGCCCTCAAAGAATGTATTCTGGCTTTGGGTGAGAACAGCCT
 CACACCCATTAGAGCCAGCAAACCTCACACTGGTGTCCGGGACTCCTTTATAGGCCAGAACTCCTCCA
 CTTGCATGATTGCTACCATCTCTCGGGGATGACCTCTTGTGAAAACACTCTCAACACTTAAGATATGC
 AAACAGAGTAAAAAATTAATGTAGATGTAAGGCCCTACCATCGTGGCCACTATCCGATTGGACATGAG
 GCACCAAGGATGTTAAAAAGTCACATCGGAAATTCAGAAATGTCCCTTCAGAGGGATGAATTTATAAAA
 TACCTTATGTACAGAGTGAGGAGCAGAAAGAGATTGAAGAGGTTGAAACATTACCCACTCTGTTAGGGAA
 GGATACCACAATTCAGGGAAGGGATCTAGCCAATGGTTGGAAAACATCCAGGAGAGAGTGGTGGAGTA
 CACCATGATATTGATTTTTGCATTGCCCGTCTTTGTCCATTTTGGAGCAGAAAATTGATGCTCTGACCG
 AGATCCAAAAGAACTGAAATTATTACTAGCTGACCTCCACGTGAAGAGCAAGGTAGAG

ACGCGTACGCGGGCCGCTCGAGCAGAAACTCATCTCAGAAGAGGATCTGGCAGCAAATGATATCCTGGATT
 ACAAGGATGACGACGATAAGGTTTAA

Protein Sequence: >RC207433 protein sequence
Red=Cloning site Green=Tags(s)

```
MASQFCLPESPCLSPLKPLKPHFGDIQEGIYVAIQRS DKRIHLAVVTEINRENYWVTVEVVEKAVKGGK
IDLETILLNLPALDSAHPMPPLSPLALAPSSAIRDQRTATKWVAMIPQKNQTASGDSL DVRVPSKPC
LMKQKSPCLWEIQKLQEQRKRRRLQQEIRARRALDVNTRNPNYEIMHMIEEYRRHL DSSKISVLEPPQ
EHRICVCVRKRPLNQRETTLKDLDIITVPSDNVVMVHESKQKVDLTRYLQNTFCFDHAFDDKASNELVY
QFTAQPLVESIFRKGMATCFAYGQTGSGKTYTMGGDFSGTAQDCSKGIYALVAQDVFL LLRNSTYEKLDL
KVYGTFFEIYGGKVYDLLNWKKKLQVLEDGNQQIQVVG LQEKEVCCVEEVLNLVEIGNSCRTSRQTSVNA
HSSRSHAVFQIILKSGGIMHGKFSVLDLAGNERGADTTKASRKRQLEGAEINKSLLALKECICALGQNKP
HTPFRASKLTLVLRDSFIGQNSSTCMIAIISPGMTSCENTLNTLRYANRVKKNVDV RPYHRGHYPIGHE
APRMLKSHIGNSEMSLQRDEFIKIPYVQSEEQKEIEE VETLPTLLGKDTTISGKGS SQWLENIQERAGGV
HHDIDFCIARSLSILEQKIDALTEIQKLLKLLADLHV KSKVE
```

TRTRPLEQKLI SEEDLAANDILDYKDDDDKV

Chromatograms: https://cdn.origene.com/chromatograms/mk6757_b06.zip

Restriction Sites: SgfI-MluI

Cloning Scheme:



ACCN: NM_032559

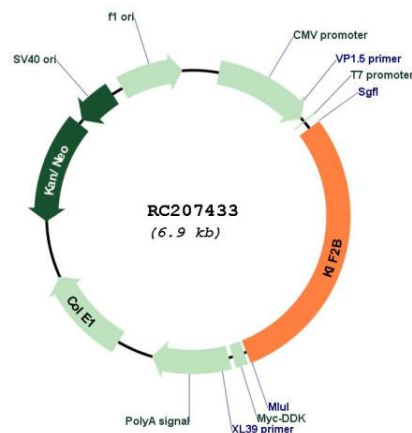
ORF Size: 2019 bp

OTI Disclaimer: The molecular sequence of this clone aligns with the gene accession number as a point of reference only. However, individual transcript sequences of the same gene can differ through naturally occurring variations (e.g. polymorphisms), each with its own valid existence. This clone is substantially in agreement with the reference, but a complete review of all prevailing variants is recommended prior to use. [More info](#)

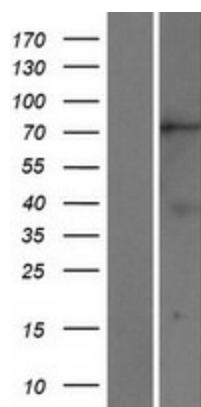
OTI Annotation: This clone was engineered to express the complete ORF with an expression tag. Expression varies depending on the nature of the gene.

Components:	The ORF clone is ion-exchange column purified and shipped in a 2D barcoded Matrix tube containing 10ug of transfection-ready, dried plasmid DNA (reconstitute with 100 ul of water).
Reconstitution Method:	<ol style="list-style-type: none">1. Centrifuge at 5,000xg for 5min.2. Carefully open the tube and add 100ul of sterile water to dissolve the DNA.3. Close the tube and incubate for 10 minutes at room temperature.4. Briefly vortex the tube and then do a quick spin (less than 5000xg) to concentrate the liquid at the bottom.5. Store the suspended plasmid at -20°C. The DNA is stable for at least one year from date of shipping when stored at -20°C.
RefSeq:	NM_032559.5
RefSeq Size:	2335 bp
RefSeq ORF:	2022 bp
Locus ID:	84643
UniProt ID:	Q8N4N8
Cytogenetics:	17q22
Protein Families:	Druggable Genome
MW:	76.1 kDa
Gene Summary:	Plus end-directed microtubule-dependent motor required for spindle assembly and chromosome movement. Has microtubule depolymerization activity (PubMed:17538014). Plays a role in chromosome congression (PubMed:23891108).[UniProtKB/Swiss-Prot Function]

Product images:



Circular map for RC207433



Western blot validation of overexpression lysate (Cat# [LY410047]) using anti-DDK antibody (Cat# [TA50011-100]). Left: Cell lysates from untransfected HEK293T cells; Right: Cell lysates from HEK293T cells transfected with RC207433 using transfection reagent MegaTran 2.0 (Cat# [TT210002]).