

Product datasheet for **RC207426**

CYP2S1 (NM_030622) Human Tagged ORF Clone

Product data:

Product Type:	Expression Plasmids
Product Name:	CYP2S1 (NM_030622) Human Tagged ORF Clone
Tag:	Myc-DDK
Symbol:	CYP2S1
Synonyms:	CYPIIS1
Mammalian Cell Selection:	Neomycin
Vector:	pCMV6-Entry (PS100001)
E. coli Selection:	Kanamycin (25 ug/mL)



[View online »](#)

ORF Nucleotide Sequence:

>RC207426 ORF sequence
 Red=Cloning site Blue=ORF Green=Tags(s)

TTTTGTAATACGACTCACTATAGGGCGGCCGGAATTCGTCGACTGGATCCGGTACCGAGGAGATCTGCC
 GCC**CGGATCGCC**

ATGGAGGCGACCGCACCTGGGCGTCTGCTGGCGCTGGCGCTGCTCCTGCTGCTGACGCTGGCGCTGT
 CCGGGACCAGGGCCGAGGCCACCTGCCCCCGGGCCACGCCGCTACCACTGCTGGGAAACCTCCTGCA
 GCTACGGCCCGGGCGCTGTATTAGGGCTCATGCGGCTGAGTAAGAAGTACGGACCGGTGTTACCATC
 TACCTGGGACCCTGGCGCCTGTGGTGGTCTGGTTGGCAGGAGGCTGTGCGGGAGGCCCTGGGAGGTC
 AGGCTGAGGAGTTCAGCGGCCGGGAACCGTAGCGATGCTGGAAGGGACTTTTGATGGCCATGGGGTTTT
 CTTCTCCAACGGGAGCGGTGGAGGCAGCTGAGGAAGTTTACCATGCTTGCTCTGCGGGACCTGGGCATG
 GGAAGCGAGAAGCGGAGGAGCTGATCCAGGCGGAGGCCCGGTGTCTGGTGGAGACATCCAGGGGACAG
 AAGGACGCCCATTCGATCCCTCCCTGCTGCTGGCCAGGCCACCTCCAACGTAGTCTGCTCCCTCCTCTT
 TGGCCTCCGCTTCTCCTATGAGGATAAGGAGTTCAGGCCGTGGTCCGGGAGCTGGTGGTACCCTGCTG
 GGAGTCAGCTCCAGGGGGTACAGACTACGAGATGTTCTCCTGGTTCCTGCGGCCCTGCCAGGCCCC
 ACAAGCAGCTCCTCCACCACGTACGACCTTGGCTGCCTTACAGTCCGGCAGGTGCAGCAGCACCAGGG
 GAACCTGGATGCTTCGGGCCCGCACGTGACCTTGTGATGCCTTCTGCTGAAGATGGCACAGGAGGAA
 CAAAACCAGGCACAGAATTCACCAACAAGAATGCTGATGACAGTCATTTATTTGCTGTTTGGTGGGA
 CGATGACGGTCAGCACCACGGTCGGCTATACCCTCCTGCTCCTGATGAAATACCCCATGTCCAAAAGTG
 GGTACGTGAGGAGCTGAATCGGGAGCTGGGGCTGGCCAGGCACCAAGCCTAGGGGACCGTACCCGCCTC
 CCTTACACCGACGCGTCTGCATGAGGCGCAGCGGCTGCTGGCGCTGGTCCCATGGGAATACCCCGCA
 CCCTCATGCGGACACCCGCTTCCGAGGGTACACCTGCCCCAGGCACGGAGGTCTTCCCCTCCTTGG
 CTCCATCCTGCATGACCCCAACATCTTCAAGCACCCAGAAGAGTTCAACCCAGACCGTTTTCTGGATGCA
 GATGGACGGTTCAGGAAGCATGAGGCGTTCCTGCCCTTCTCCTTAGGGAAGCGTGTCTGCCTTGGAGAGG
 GCCTGGAAAAGCGGAGCTTCTCCTTCTTACCACCATCCTACAAGCCTTCTCCCTGGAGAGCCCGTG
 CCCGCCGACACCCTGAGCCTCAAGCCACCGTCAGTGGCCTTTTCAACATTCACCCAGCCTTCCAGCTG
 CAAGTCCGTCCCACTGACCTTCACTCCACCACGCAGACCAGA

ACGCGTACGCGGCCGCTCGAGCAGAACTCATCTCAGAAGAGGATCTGGCAGCAAATGATATCCTGGATT
 ACAAGGATGACGACGATAAGGTTTAA

Protein Sequence:

>RC207426 protein sequence
 Red=Cloning site Green=Tags(s)

MEATGTWALLLALALLLLTLALSGTRARGHLPPGPTPLLLGNLLQLRPGALYSGLMRLSKKYGPVFTI
 YLGPWRPVVVLVGQEAVEREALGGQAEFSGRGTVAMLEGTFDGHGVVFSNGERWRQLRKF TMLALRDLGM
 GKREGEELIQAEARCLVETVQGTGRPFDPSSLLLAQATSNVVCSSLFGLRF SYEDKEFQAVVRAAGTLL
 GVSSQGGQTYEMFSWFLRPLPGPHKQLLHHVSTLAAFTVRQVQHQGNLDASGPARDLVDAFLKMAQEE
 QNPGTEFTKNMLMTVIYLLFAGTMTVSTTVGYLLLLMKYPHVQKWWREELNRELGAGQAPSLGDRTRL
 PYTDAVLHEAQRLLALVPMGIPRTLMRTTRFRGYTLPQGTVEVFPLLG SILHDPNIFKHPEEFNPDRFLDA
 DGRFRKHEAFLPFSLGKRVCLGEGLAKAELFFFTTILQAFSLESPPDLSLKPTVSGLFNIPPAFQL
 QVRPTDLHSTTQTR

TRTRPLEQKLISEEDLAANDILDYKDDDDKV

Chromatograms:

https://cdn.origene.com/chromatograms/mk6517_a01.zip

Restriction Sites:

Sgfl-Mlul

Cloning Scheme:



ACCN: NM_030622

ORF Size: 1512 bp

OTI Disclaimer: The molecular sequence of this clone aligns with the gene accession number as a point of reference only. However, individual transcript sequences of the same gene can differ through naturally occurring variations (e.g. polymorphisms), each with its own valid existence. This clone is substantially in agreement with the reference, but a complete review of all prevailing variants is recommended prior to use. [More info](#)

OTI Annotation: This clone was engineered to express the complete ORF with an expression tag. Expression varies depending on the nature of the gene.

Components: The ORF clone is ion-exchange column purified and shipped in a 2D barcoded Matrix tube containing 10ug of transfection-ready, dried plasmid DNA (reconstitute with 100 ul of water).

- Reconstitution Method:
1. Centrifuge at 5,000xg for 5min.
 2. Carefully open the tube and add 100ul of sterile water to dissolve the DNA.
 3. Close the tube and incubate for 10 minutes at room temperature.
 4. Briefly vortex the tube and then do a quick spin (less than 5000xg) to concentrate the liquid at the bottom.
 5. Store the suspended plasmid at -20°C. The DNA is stable for at least one year from date of shipping when stored at -20°C.

RefSeq: [NM_030622.8](#)

RefSeq Size: 2657 bp

RefSeq ORF: 1515 bp

Locus ID: 29785

UniProt ID: [Q96SQ9](#)

Cytogenetics: 19q13.2

Domains: p450

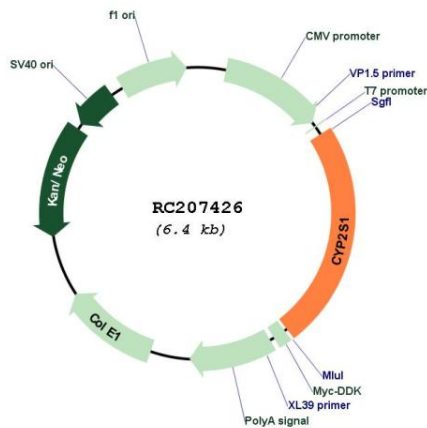
Protein Families: Druggable Genome, P450, Transmembrane

Protein Pathways: Metabolism of xenobiotics by cytochrome P450

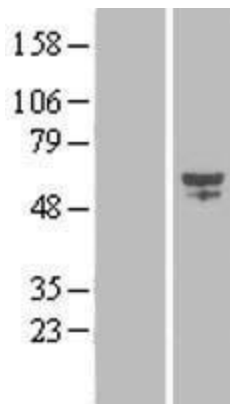
MW: 55.8 kDa

Gene Summary: This gene encodes a member of the cytochrome P450 superfamily of enzymes. The cytochrome P450 proteins are monooxygenases which catalyze many reactions involved in drug metabolism and synthesis of cholesterol, steroids and other lipids. This protein localizes to the endoplasmic reticulum. In rodents, the homologous protein has been shown to metabolize certain carcinogens; however, the specific function of the human protein has not been determined. [provided by RefSeq, Jul 2008]

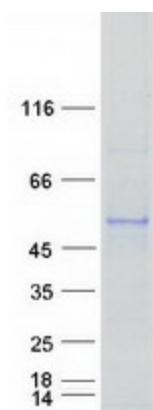
Product images:



Circular map for RC207426



Western blot validation of overexpression lysate (Cat# [LY410796]) using anti-DDK antibody (Cat# [TA50011-100]). Left: Cell lysates from untransfected HEK293T cells; Right: Cell lysates from HEK293T cells transfected with RC207426 using transfection reagent MegaTran 2.0 (Cat# [TT210002]).



Coomassie blue staining of purified CYP251 protein (Cat# [TP307426]). The protein was produced from HEK293T cells transfected with CYP251 cDNA clone (Cat# RC207426) using MegaTran 2.0 (Cat# [TT210002]).