

Product datasheet for **RC207417**

Cytochrome p450 2J2 (CYP2J2) (NM_000775) Human Tagged ORF Clone

Product data:

Product Type:	Expression Plasmids
Product Name:	Cytochrome p450 2J2 (CYP2J2) (NM_000775) Human Tagged ORF Clone
Tag:	Myc-DDK
Symbol:	Cytochrome p450 2J2
Synonyms:	CPJ2; CYP1IJ2
Mammalian Cell Selection:	Neomycin
Vector:	pCMV6-Entry (PS100001)
E. coli Selection:	Kanamycin (25 ug/mL)



[View online »](#)

ORF Nucleotide Sequence:

>RC207417 ORF sequence
 Red=Cloning site Blue=ORF Green=Tags(s)

TTTTGTAATACGACTCACTATAGGGCGGCCGGAATTCGTCGACTGGATCCGGTACCGAGGAGATCTGCC
 GCC**CGCATCGCC**

ATGCTCGCGGCGATGGGCTCTCTGGCGGCTGCCCTCTGGGCAGTGGTCCATCCTCGGACTCTCTACTGG
 GCACTGTGCGCTTCTGCTCGCTGCTGACTTTCTCAAAGACGGCGCCAAAGAAGTACCCGCGGGGCC
 CTGGCGCCTGCCCTTCTTGGCAACTTCTTCTTGTGGACTTCGAGCAGTCGCACCTGGAGGTTAGCTG
 TTTGTGAAGAAATATGGGAACCTTTTTAGCTTGGAGCTTGGTGACATATCTGCAGTTCTTATTACTGGCT
 TGCCCTTAATCAAAGAAGCCCTTATCCACATGGACCAAACTTTGGGAACCGCCCGTGACCCTATGCG
 AGAACATATCTTAAAGAAAATGGATTGATTATGTCAAGTGGCCAGGCATGGAAGGAGCAAAGAAGGTTT
 ACTCTGACAGCACTAAGGAACCTTGGTTTAGGAAAGAAGAGCTTAGAGGAACGCATTAGGAGGAGGCC
 AACACCTCACTGAAGCAATAAAGAGGAGAACGGACAGCCTTTGACCCTATTTCAAGATCAACAATGC
 AGTTTCCAATATCATTGCTCCATCACCTTCGGAGAACGCTTTGAGTACCAGGATAGTTGGTTTCAGCAG
 CTGCTGAAGTTACTAGATGAAGTACATACTTGGAGGCTTCAAAGACATGCCAGCTCTACAATGTCTTTC
 CATGGATAATGAAATTCCTGCCTGGACCCACCAAACCTCTTTCAGCAACTGGAAAAAAGTAAATGTT
 TGTTTCTCATATGATTGACAAACACAGAAAGGATTGGAATCCTGCAGAAACAAGAGACTTTATTGATGCT
 TACCTTAAAGAAATGTCAAAGCACACAGGCAATCCTACTTCAAGTTTCCATGAAGAAAACCTCATCTGCA
 GCACCTTGGACCTCTTCTTGGCGAACCGAGACAACCTCCACAACCTCTGCGATGGGCTCTGCTTTATAT
 GGCCCTTACCCAGAAATCCAAGAAAAGTACAAGCTGAGATTGACAGAGTGATTGGCCAGGGGCAGCAG
 CCGAGCACAGCCCGCCGGAGTCCATGCCCTACACCAATGCTGTCATCCATGAGGTGCAGAGAATGGCAA
 ACATCATCCCCCTGAACGTTCCAGGGAAGTACAGTTGATACCACTTTGGCTGGGTACCACTGCCCAA
 GGGTACCATGATCCTGACCAATTTGACGGCGCTGCACAGGGACCCACAGAGTGGGCCACCCCTGCACACA
 TTCAATCCGGACATTTTCTGGAGAATGGACGTTTAAAGAAAAGGGAAGCCTTTATGCCTTCTCAATAG
 GAAAGCGGGCATGCCTCGGAGAACAGTTGGCCAGGACTGAGCTGTTTATTTTCTCACTTCCCTTATGCA
 AAAATTTACCTTCAAGCCCCAAACAATGAGAAGCTGAGCCTGAAGTTTAGAATGGGTATCACCATTTC
 CCAGTCAGTCACCGCCTCTGCGCTGTTCTCAGGTG

**ACGCGTACGCGGCCGCTCGAGCAGAAACTCATCTCAGAAGAGGATCTGGCAGCAAATGATATCCTGGATT
 ACAAGGATGACGACGATAAGGTTTAA**

Protein Sequence:

>RC207417 protein sequence
 Red=Cloning site Green=Tags(s)

MLAAMGSLAAALWAVVHPRTLLLGTVAFLLAADFLKRRRPPKNYPGPWRLPFLGNFFLVDFEQSHLEVQL
 FVKKYGNLFSLELGDISAVLITGLPLIKEALIHMDQNFGNRPVTPMREHIFKKNGLIMSSGQAWKEQRRF
 TLTALRNFLGKKSLEERIQEEAQHLTEAIKEENGQPFDPHFKINNAVSNIIICSIIFGERFEYQDSWFQQ
 LLKLLDEVTYLEASKTCQLYNVFPWIMKFLPGPHQTLFSNWKKLKLVSHMIDKHKRDWNPATRDIFDA
 YLKEMSKHTGNPTSSFHEENLICSTLDLFFAGTETTSTTLRWALLYMALYPEIQEKVQAEIDRVIGGQQ
 PSTAARESMPYTNVAIHEVQRMGNIIPLNVPREVTVDTTLAGYHLPKGTMLTNLTALHRDPTWATPDT
 FNPDFLENGQFKKREAFMPFSIGKRACLGEQLARTELFIFFTSLMQKFTFRPPNNEKLSLKFRMGITIS
 PVSHRLCAVPQV

TRTRPLEQKLISEEDLAANDILDYKDDDDKV

Chromatograms:

https://cdn.origene.com/chromatograms/mk6279_f06.zip

Restriction Sites:

Sgfl-Mlul

Cloning Scheme:



ACCN: NM_000775

ORF Size: 1506 bp

OTI Disclaimer: The molecular sequence of this clone aligns with the gene accession number as a point of reference only. However, individual transcript sequences of the same gene can differ through naturally occurring variations (e.g. polymorphisms), each with its own valid existence. This clone is substantially in agreement with the reference, but a complete review of all prevailing variants is recommended prior to use. [More info](#)

OTI Annotation: This clone was engineered to express the complete ORF with an expression tag. Expression varies depending on the nature of the gene.

Components: The ORF clone is ion-exchange column purified and shipped in a 2D barcoded Matrix tube containing 10ug of transfection-ready, dried plasmid DNA (reconstitute with 100 ul of water).

Reconstitution Method:

1. Centrifuge at 5,000xg for 5min.
2. Carefully open the tube and add 100ul of sterile water to dissolve the DNA.
3. Close the tube and incubate for 10 minutes at room temperature.
4. Briefly vortex the tube and then do a quick spin (less than 5000xg) to concentrate the liquid at the bottom.
5. Store the suspended plasmid at -20°C. The DNA is stable for at least one year from date of shipping when stored at -20°C.

Note: Plasmids are not sterile. For experiments where strict sterility is required, filtration with 0.22um filter is required.

RefSeq: [NM_000775.4](#)

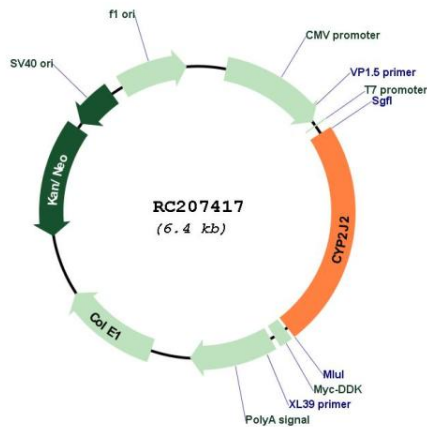
RefSeq Size: 1876 bp

RefSeq ORF: 1509 bp

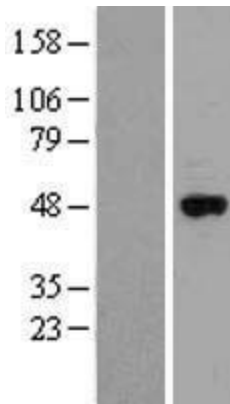
Locus ID: 1573

UniProt ID: [P51589](#)
Cytogenetics: 1p32.1
Domains: p450
Protein Families: Druggable Genome, P450, Transmembrane
Protein Pathways: Arachidonic acid metabolism, Linoleic acid metabolism, Metabolic pathways
MW: 57.6 kDa
Gene Summary: This gene encodes a member of the cytochrome P450 superfamily of enzymes. The cytochrome P450 proteins are monooxygenases which catalyze many reactions involved in drug metabolism and synthesis of cholesterol, steroids and other lipids. This protein localizes to the endoplasmic reticulum and is thought to be the predominant enzyme responsible for epoxidation of endogenous arachidonic acid in cardiac tissue. Multiple transcript variants have been found for this gene. [provided by RefSeq, Jan 2016]

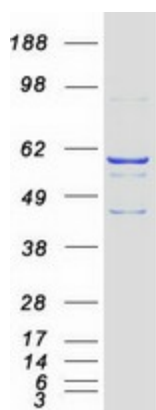
Product images:



Circular map for RC207417



Western blot validation of overexpression lysate (Cat# [LY424525]) using anti-DDK antibody (Cat# [TA50011-100]). Left: Cell lysates from untransfected HEK293T cells; Right: Cell lysates from HEK293T cells transfected with RC207417 using transfection reagent MegaTran 2.0 (Cat# [TT210002]).



Coomassie blue staining of purified CYP2J2 protein (Cat# [TP307417]). The protein was produced from HEK293T cells transfected with CYP2J2 cDNA clone (Cat# RC207417) using MegaTran 2.0 (Cat# [TT210002]).