

## Product datasheet for **RC207416**

### Neuritin (NRN1) (NM\_016588) Human Tagged ORF Clone

#### Product data:

**Product Type:** Expression Plasmids  
**Product Name:** Neuritin (NRN1) (NM\_016588) Human Tagged ORF Clone  
**Tag:** Myc-DDK  
**Symbol:** Neuritin  
**Synonyms:** dj380B8.2; NRN  
**Mammalian Cell Selection:** Neomycin  
**Vector:** pCMV6-Entry (PS100001)  
**E. coli Selection:** Kanamycin (25 ug/mL)  
**ORF Nucleotide Sequence:** >RC207416 ORF sequence  
Red=Cloning site Blue=ORF Green=Tags(s)

TTTTGTAATACGACTCACTATAGGGCGGCCGGAATTCGTCGACTGGATCCGGTACCGAGGAGATCTGCC  
GCC**CGATCGCC**

ATGGGACTTAAGTTGAACGGCAGATATATTTCACTGATCCTCGCGGTGCAAATAGCGTATCTGGTGCAGG  
CCGTGAGAGCAGCGGGCAAGTGCATGCGGTCTTCAAGGGCTTTTCGGACTGTTTGCTCAAGCTGGGCGA  
CAGCATGGCCAACTACCCGCAGGGCCTGGACGACAAGACGAACATCAAGACCGTGTGCACATACTGGGAG  
GATTTCCACAGCTGCACGGTACAGCCCTTACGGATTGCCAGGAAGGGGGCAAAGATATGTGGGATAAAC  
TGAGAAAAGAATCCAAAACCTCAACATCCAAGGCAGCTTATTCGAACTCTGCGGCAGCGGCAACGGGGC  
GGCGGGGTCCCTGCTCCCGCGTTCCTGGTGTCTCTCGGCAGCTTAGCGACCTGGCTT  
TCCTC

**ACGCGT**ACGCGGCCGCTCGAGCAGAACTCATCTCAGAAGAGGATCTGGCAGCAAATGATATCCTGGATT  
ACAAGGATGACGACGATAAGGTTTAA

**Protein Sequence:** >RC207416 protein sequence  
Red=Cloning site Green=Tags(s)

MGLKLNTRYISLILAVQIAYLVQAVRAAGKCDVFKGFSDDLKLGDSMANYPQGLDDKTNIKTVCTYWE  
DFHSCTVTALTDCEGAKDMWDKLRKESKNLNIQGSFELCGSGNGAAGSLLPAFPVLLVLSAALATWL  
SF

**TR**TRPLEQKLISEEDLAANDILDYKDDDDKV

**Chromatograms:** [https://cdn.origene.com/chromatograms/mk6023\\_f11.zip](https://cdn.origene.com/chromatograms/mk6023_f11.zip)



[View online >](#)

Restriction Sites: SgfI-MluI

Cloning Scheme:



ACCN: NM\_016588

ORF Size: 426 bp

OTI Disclaimer: Due to the inherent nature of this plasmid, standard methods to replicate additional amounts of DNA in E. coli are highly likely to result in mutations and/or rearrangements. Therefore, OriGene does not guarantee the capability to replicate this plasmid DNA. Additional amounts of DNA can be purchased from OriGene with batch-specific, full-sequence verification at a reduced cost. Please contact our customer care team at [custsupport@origene.com](mailto:custsupport@origene.com) or by calling 301.340.3188 option 3 for pricing and delivery.

The molecular sequence of this clone aligns with the gene accession number as a point of reference only. However, individual transcript sequences of the same gene can differ through naturally occurring variations (e.g. polymorphisms), each with its own valid existence. This clone is substantially in agreement with the reference, but a complete review of all prevailing variants is recommended prior to use. [More info](#)

OTI Annotation: This clone was engineered to express the complete ORF with an expression tag. Expression varies depending on the nature of the gene.

Components: The ORF clone is ion-exchange column purified and shipped in a 2D barcoded Matrix tube containing 10ug of transfection-ready, dried plasmid DNA (reconstitute with 100 ul of water).

**Reconstitution Method:**

1. Centrifuge at 5,000xg for 5min.
2. Carefully open the tube and add 100ul of sterile water to dissolve the DNA.
3. Close the tube and incubate for 10 minutes at room temperature.
4. Briefly vortex the tube and then do a quick spin (less than 5000xg) to concentrate the liquid at the bottom.
5. Store the suspended plasmid at -20°C. The DNA is stable for at least one year from date of shipping when stored at -20°C.

**RefSeq:** [NM\\_016588.3](#)

**RefSeq Size:** 2072 bp

**RefSeq ORF:** 429 bp

**Locus ID:** 51299

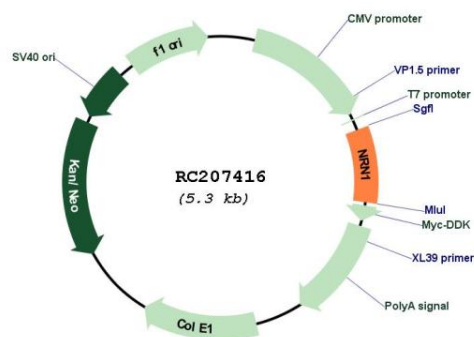
**UniProt ID:** [Q9NPD7](#)

**Cytogenetics:** 6p25.1

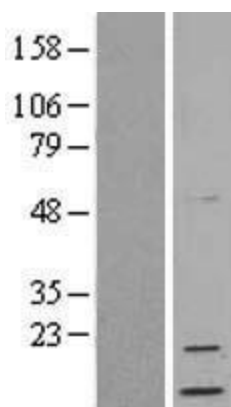
**MW:** 15.3 kDa

**Gene Summary:** This gene encodes a member of the neuritin family, and is expressed in postmitotic-differentiating neurons of the developmental nervous system and neuronal structures associated with plasticity in the adult. The expression of this gene can be induced by neural activity and neurotrophins. The encoded protein contains a consensus cleavage signal found in glycosylphosphatidylinositol (GPI)-anchored proteins. The encoded protein promotes neurite outgrowth and arborization, suggesting its role in promoting neuritogenesis. Overexpression of the encoded protein may be associated with astrocytoma progression. Alternative splicing results in multiple transcript variants. [provided by RefSeq, Jul 2013]

### Product images:



Circular map for RC207416



Western blot validation of overexpression lysate (Cat# [LY402576]) using anti-DDK antibody (Cat# [TA50011-100]). Left: Cell lysates from untransfected HEK293T cells; Right: Cell lysates from HEK293T cells transfected with RC207416 using transfection reagent MegaTran 2.0 (Cat# [TT210002]).