

Product datasheet for **RC207410**

SLC27A6 (NM_014031) Human Tagged ORF Clone

Product data:

Product Type:	Expression Plasmids
Product Name:	SLC27A6 (NM_014031) Human Tagged ORF Clone
Tag:	Myc-DDK
Symbol:	SLC27A6
Synonyms:	ACSVL2; FACVL2; FATP6; VLCS-H1
Mammalian Cell Selection:	Neomycin
Vector:	pCMV6-Entry (PS100001)
E. coli Selection:	Kanamycin (25 ug/mL)



[View online »](#)

ORF Nucleotide Sequence:

>RC207410 ORF sequence
 Red=Cloning site Blue=ORF Green=Tags(s)

TTTTGTAATACGACTCACTATAGGGCGGCCGGAATTCGTCGACTGGATCCGGTACCGAGGAGATCTGCC
 GCC**CGCATCGCC**

ATGCTTCTGTCATGGCTAACAGTTCTAGGGGCTGGAATGGTCGTCCTGCACCTTCGTGCAGAACTCCTGT
 TCACCTACTTTTGGGATGACTTCTGGTTCTGTGTTGAAGGTGGTGCTCATTATAATTCGGCTGAAGAAGTA
 CGAAAAGAGAGGGGAGCTGGTACTGTGCTGGATAAATCTTGAGTCATGCCAAAAGACAACCTCGGAAA
 CCTTTCATCATCTATGAGGGAGACATCTACACCTATCAGGATGTAGACAAAAGGAGCAGCAGAGTGGCCC
 ATGTCTTCTGAACCATTCCTCTCTGAAAAGGGGACACGGTGGCTCTGCTGATGAGCAATGAGCCGGA
 CTTCTGTTACGTGGTTTCGGCCTCGCCAAGCTGGGCTGCGTGGTGGCCTTTCTCAACACCAACATTGCG
 TCCAACCTCCTCGAATTGCATCCGCGCTGTGGGCCAGAGCCCTAGTGGTGGCGCAGATTTGCTTG
 GGACGGTAGAAGAAATCCTTCCAAGCCTCTCAGAAAATATCAGTGTGGGGGATGAAAGATTCTGTTCC
 ACAAGGTGAATTTCACTCAAAGAAAACTGAGCACCTCACCTGATGAGCCCGTCCACGCAGCCACCAT
 GTTGTCTCACTCATCAAGTCTACTTGTCTTTACATTTTTACCTCTGGAACAAACAGGTCTACCAAAAGCAG
 CTGTGATTAGTCAGCTGCAGTTTTAAGGGTTCTGCTGTCTGTGGGCTTTTGGTTGACTGCTCATGA
 CATTGTTTATATAACCTTCTCTGTATCATAGTTCAGCAGCTATCCTGGGAATTTCTGGATGTGTTGAG
 TTGGGTGCCACTTGTGTGTTAAGAAGAAATTTTCAGCAAGCCAGTTTTGGAGTGACTGCAAGAAGTATG
 ATGTGACTGTGTTTCAGTATATTGGAGAAGTGTGCTACCTTTGCAACAATCTAAGAGAGAAGGAGA
 AAAGGATCATAAGGTGCGTTTGGCAATTGGAATGGCATACGGAGTGATGATGGAGAGAATTTTAGAC
 AGATTTGGAAATATAAAGGTGTGTAACCTTTATGCAGCTACCGAATCAAGCATATCTTTCATGAACATA
 CTGGGAGAATTGGAGCAATTGGGAGAACAATTTGTTTTACAACTTCTTCCACTTTTGACTTAATAAA
 GTATGACTTTTCAGAAAGATGAACCCATGAGAAAATGAGCAGGGTTGGTGTATTCATGTGAAAAAGGAGAA
 CCTGGACTTCTATTTCTCGAGTGAATGCAAAAAATCCCTTCTTTGGCTATGCTGGGCCTTATAAGCACA
 CAAAAGACAAATTGCTTTGTGATGTTTTAAGAAGGGAGATGTTACCTTAATACTGGAGACTTAATAGT
 CCAGGATCAGGACAATTTCTTTATTTTGGGACCGTACTGGAGACACTTTCAGATGGAAAGGAGAAAAAT
 GTCGCAACCACTGAGGTTGCTGATGTTATTGGAATGTTGGATTTCATACAGGAAGCAAACGCTATGGTG
 TGGCTATATCAGGTTATGAAGGAAGAGCAGGAATGGCTTCTATTATTTAAAACCAATACATCTTTAGA
 TTTGGAAAAAGTTTATGAACAAGTTGTAACTTTCTACCAGCTTATGCTTGCCACGATTTTAAAGATT
 CAGGAAAAAATGGAAGCAACAGGAACATTCAAACCTATTGAAGCATCAGTTGGTGGAGATGGATTTAATC
 CACTGAAAAATTTCTGAACCACTTACTTTCATGGATAACTTAAAAAGTCTTATGTTCTACTGACCAGGGA
 ACTTTATGATCAATAATGTTAGGGGAAATAAACTT

ACGCGTACGCGGCCGCTCGAGCAGAACTCATCTCAGAAGAGGATCTGGCAGCAATGATATCCTGGATT
 ACAAGGATGACGACGATAAGGTTTAA

Protein Sequence:

>RC207410 protein sequence
 Red=Cloning site Green=Tags(s)

MLLSWLVTLGAGMVVLFVQKLLFTYFWDFFVFLKVVLIIRLKKYEKRGELVTVLDFKFLSHAKRQPRK
 PFIIEYEDIYTYQDVDRSSRVAVHFLNHSSLKKGDTVALLMSNEPDFVHVWFLAKLGCVVAFLNTNIR
 SNSLLNCIRACGPRALVVGADLLGTVEEILPSLSENI SVWGMKDSVPQGVISLKEKLTSPDEPVPRSHH
 VVSLIKSTCLYIFTSGTTGLPKAAVISQLQVLRGS AVLWAFGCTAHDIVYITLPL YHSSAAILGISGCV
 LGATCVLKKKFSASQFWSCKKYDVTVFQYIGELCRYLCKQSKREGEKDHKVR LAIGNGIRSDVWREFLD
 RFGNIKVCELYAATESISFMNYTGRIGAIGRTNLFYKLLSTFDLIKDYDFQKDEPMRNEQGWCIHVKKGE
 PGLLISRVAKNPFFGYAGPYKHTKDKLLCDVFKKGDVYLN TGDLIVQDQDNFLYFWDRTGDTFRWKGEN
 VATTEVADVIGMLDFIQEANVYGVAVISGYEGRAGMASIILKPNTSLDLEKVVYEQVVTFLPAYACPRFLRI
 QEKMEATGTFKLLKHLVEDGFNPLKISEPL YFMDNLKKS YVLLTREL YDQIMLGEIKL

TRTRPLEQKLI SEEDLAANDILDYKDDDDKV

Chromatograms: https://cdn.origene.com/chromatograms/mk6134_f07.zip

Restriction Sites: SgfI-MluI

Cloning Scheme:



ACCN: NM_014031

ORF Size: 1857 bp

OTI Disclaimer: The molecular sequence of this clone aligns with the gene accession number as a point of reference only. However, individual transcript sequences of the same gene can differ through naturally occurring variations (e.g. polymorphisms), each with its own valid existence. This clone is substantially in agreement with the reference, but a complete review of all prevailing variants is recommended prior to use. [More info](#)

OTI Annotation: This clone was engineered to express the complete ORF with an expression tag. Expression varies depending on the nature of the gene.

Components: The ORF clone is ion-exchange column purified and shipped in a 2D barcoded Matrix tube containing 10ug of transfection-ready, dried plasmid DNA (reconstitute with 100 ul of water).

Reconstitution Method:

1. Centrifuge at 5,000xg for 5min.
2. Carefully open the tube and add 100ul of sterile water to dissolve the DNA.
3. Close the tube and incubate for 10 minutes at room temperature.
4. Briefly vortex the tube and then do a quick spin (less than 5000xg) to concentrate the liquid at the bottom.
5. Store the suspended plasmid at -20°C. The DNA is stable for at least one year from date of shipping when stored at -20°C.

RefSeq: [NM_014031.4](#)

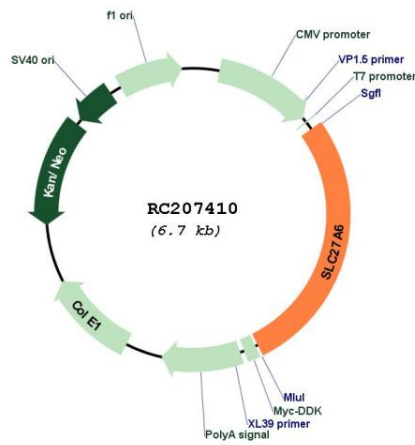
RefSeq Size: 2617 bp

RefSeq ORF: 1860 bp

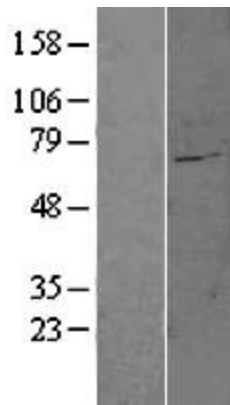
Locus ID: 28965
UniProt ID: [Q9Y2P4](#)
Cytogenetics: 5q23.3
Domains: AMP-binding
Protein Pathways: PPAR signaling pathway
MW: 70.1 kDa

Gene Summary: This gene encodes a member of the fatty acid transport protein family (FATP). FATPs are involved in the uptake of long-chain fatty acids and have unique expression patterns. Alternatively spliced transcript variants encoding the same protein have been found for this gene. [provided by RefSeq, Jul 2008]

Product images:



Circular map for RC207410



Western blot validation of overexpression lysate (Cat# [LY402279]) using anti-DDK antibody (Cat# [TA50011-100]). Left: Cell lysates from untransfected HEK293T cells; Right: Cell lysates from HEK293T cells transfected with RC207410 using transfection reagent MegaTran 2.0 (Cat# [TT210002]).