

## Product datasheet for RC207407

### CABCOCO1 (NM\_173554) Human Tagged ORF Clone

#### Product data:

**Product Type:** Expression Plasmids  
**Product Name:** CABCOCO1 (NM\_173554) Human Tagged ORF Clone  
**Tag:** Myc-DDK  
**Symbol:** CABCOCO1  
**Synonyms:** C10orf107  
**Mammalian Cell Selection:** Neomycin  
**Vector:** pCMV6-Entry (PS100001)  
**E. coli Selection:** Kanamycin (25 ug/mL)  
**ORF Nucleotide Sequence:** >RC207407 ORF sequence  
 Red=Cloning site Blue=ORF Green=Tags(s)

TTTTGTAATACGACTCACTATAGGGCGGCCGGAATTCGTCGACTGGATCCGGTACCGAGGAGATCTGCC  
 GCCCGGATCGCC

ATGGATTCTCTATTATTCAGTATTCAAAAATTTGACTTTACTAGCTATGTCACCTTCAAATCTTAAAA  
 CACTACATATGTCCTTAGAGGAAAGCATAAAATGGCTTGGAGAAGTTATGGCTGAAATAGGACCAACACA  
 TTCGAAAAGAGTGAGGACTGGAATATCTTTGATGTAACAAGCCAATGCTATCATTGATTACTTAAAA  
 ATCAGCTATTTCAACTACAAGCTATACGAGTTTATGTTCTACTCTGCCAGGGAAGAAATTGTGATAG  
 GAACTGAGCAAGTGATAGAGTTGTCAAGTCTGCATGTGGCCCTTCCCAAATCCTCTGGAAGAAGGAAT  
 CTATTTGATATTTATCAACATTCATAGAGCCCCCACAATATTGGATACGGAAATGAAGAGGTTGGAT  
 CAAGAACAAGGCCCTGAGGAGTCTCAGCCAGAACTGACACCTCAGACATGGATCCTTTAGTTGGTTTCA  
 CCATTGAAGATGTAAAATCAGTGCTGGATCAAGTCACAGATGACATTTTAAATCGGCATTCAGACCGAGAT  
 AAACGAAAAACTGCAAATACAGGAAGAGGCCTTTAATGCACGAATAGAAAAATTGAAAAAGGCC

ACGCGTACGCGGCCGCTCGAGCAGAACTCATCTCAGAAGAGGATCTGGCAGCAAATGATATCCTGGATT  
 ACAAGGATGACGACGATAAGGTTTAA

**Protein Sequence:** >RC207407 protein sequence  
 Red=Cloning site Green=Tags(s)

MDFSIIQYSKFMILLAMSLQNLKTLHMSLEESIKWLGEVMAEIGPHTSQKSEDWNIFDVKQANAIIDYLK  
 ISLFQHYKLYEFMFYSAREEIVIGTEQVIEVVKSSACGPFNPLEEISFDIYSTFIEPPTILDTEMKRLD  
 QEQGPESQPETDTSMDPLVGFITIEDVKSVLDDQVTDILIGIQTEINEKLQIQEEAFNARIEKLKKA

TRTRPLEQKLISEEDLAANDILDYKDDDDKV



Chromatograms: [https://cdn.origene.com/chromatograms/mk6341\\_h06.zip](https://cdn.origene.com/chromatograms/mk6341_h06.zip)

Restriction Sites: SgfI-MluI

Cloning Scheme:



ACCN: NM\_173554

ORF Size: 624 bp

OTI Disclaimer: The molecular sequence of this clone aligns with the gene accession number as a point of reference only. However, individual transcript sequences of the same gene can differ through naturally occurring variations (e.g. polymorphisms), each with its own valid existence. This clone is substantially in agreement with the reference, but a complete review of all prevailing variants is recommended prior to use. [More info](#)

OTI Annotation: This clone was engineered to express the complete ORF with an expression tag. Expression varies depending on the nature of the gene.

Components: The ORF clone is ion-exchange column purified and shipped in a 2D barcoded Matrix tube containing 10ug of transfection-ready, dried plasmid DNA (reconstitute with 100 ul of water).

Reconstitution Method:

1. Centrifuge at 5,000xg for 5min.
2. Carefully open the tube and add 100ul of sterile water to dissolve the DNA.
3. Close the tube and incubate for 10 minutes at room temperature.
4. Briefly vortex the tube and then do a quick spin (less than 5000xg) to concentrate the liquid at the bottom.
5. Store the suspended plasmid at -20°C. The DNA is stable for at least one year from date of shipping when stored at -20°C.

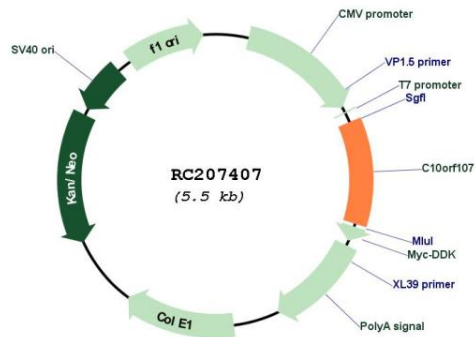
RefSeq: [NM\\_173554.1](#), [NP\\_775825.1](#)

RefSeq Size: 1270 bp

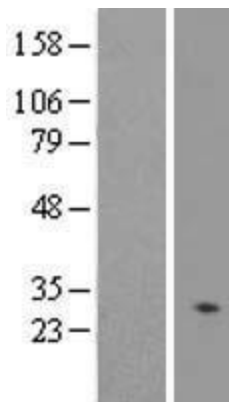
RefSeq ORF: 627 bp

Locus ID: 219621

**UniProt ID:** [Q8IVU9](#)  
**Cytogenetics:** 10q21.2  
**MW:** 23.9 kDa  
**Gene Summary:** Calcium-binding protein. May be involved in the control of sperm flagellar movement. [UniProtKB/Swiss-Prot Function]

**Product images:**


Circular map for RC207407



Western blot validation of overexpression lysate (Cat# [LY406465]) using anti-DDK antibody (Cat# [TA50011-100]). Left: Cell lysates from untransfected HEK293T cells; Right: Cell lysates from HEK293T cells transfected with RC207407 using transfection reagent MegaTran 2.0 (Cat# [TT210002]).