

Product datasheet for **RC207406**

EXTL2 (NM_001439) Human Tagged ORF Clone

Product data:

Product Type:	Expression Plasmids
Product Name:	EXTL2 (NM_001439) Human Tagged ORF Clone
Tag:	Myc-DDK
Symbol:	EXTL2
Synonyms:	EXTR2
Mammalian Cell Selection:	Neomycin
Vector:	pCMV6-Entry (PS100001)
E. coli Selection:	Kanamycin (25 ug/mL)
ORF Nucleotide Sequence:	>RC207406 ORF sequence Red=Cloning site Blue=ORF Green=Tags(s)

TTTTGTAATACGACTCACTATAGGGCGGCCGGAATTCGTCGACTGGATCCGGTACCGAGGAGATCTGCC
GCC**CGATCGCC**

ATGAGGTGTTGCCACATCTGCAAACCTCCTGGGAGAGTAATGGGGATTTCGAGTGCCTTCGATTATCTTTGG
TGGTCATCCTCGTATTACTGGTAGCTGGTCTTTGACTGCCTTACTCCCAGTGTTAAAGAAGACAA
GATGCTCATGTTGCGTAGGGAAATAAAATCCCAGGGCAAGTCCACCATGGACTCCTTTACTCTCATAATG
CAGACGTACAACAGAACAGATCTCTTATTGAAACTTTTAAATCATTATCAGGCTGTACCAAATCTGCACA
AAGTGATTGTGGTATGGAACAATATTGGAGAGAAGGCACCAGATGAATTATGGAATCTCTAGGGCCCCA
CCCTATCCCTGTGATCTTCAAACAACAGACAGCAAACAGGATGAGAAATCGACTCCAGGTCTTTCCTGAA
CTGGAAACCAATGCAGTGTGGTAGATGATGACACACTCATCAGCACACAGACCTGTTTTTGCTT
TCTCAGTTTGGCAGCAATTTCTGATCAAATTGTAGGATTTGTTCTAGAAAGCACGTCTCTACTTCATC
AGGTATCTACAGTTATGGAAGTTTTGAAATGCAAGCACCAGGGTCTGGAAATGGTGACCAGTACTCTATG
GTGCTGATTGGAGCCTCATTCTCAATAGCAAATATCTTGAATTTTCAGAGGCAACCTGCAGCTGTCC
ATGCTTTGATAGATGATACTCAAACCTGTGATGATATTGCCATGAATTTTATCATTGCCAAGCATATTGG
CAAGACTTCAGGGATATTTGTGAAGCCTGTAACATGGACAATTTGGAAAAAGAAACCAACAGTGGCTAT
TCTGGAATGTGGCATCGAGCTGAGCAGCTCTGCAGAGTCTTATTGTATAAATAAGCTTGTTAATATCT
ATGATAGCATGCCCTTAAGATACTCCAACATTATGATTTCCAGTTTGGTTTTCCATATGCCAACTACAA
AAGAAAAATA

ACGCGTACGCGGCCGCTCGAGCAGAACTCATCTCAGAAGAGGATCTGGCAGCAAATGATATCCTGGATT
ACAAGGATGACGACGATAAGGTTTAA



[View online »](#)

Protein Sequence: >RC207406 protein sequence
Red=Cloning site Green=Tags(s)

MRCCHICKLPGRVMGIRVLRSLVVLVLLVAGALTALLPSVKEDKMLMLRREIKSQGKSTMSFTLIM
 QTYNRTDLLLKLNNHYQAVPNLHKVIVVWNNIGEKAPDELWNSLGPPIPVIKQQTANRMRNLQVPE
 LETNAVLVDDDTLISTDLVFAFVWQQFPDQIVGFVPRKHVSTSSGIYSYGSFEMQAPGSGNGDQYSM
 VLI GASFFNSKYLELFQRQPAAVHALIDDTQNCDDIAMNFI IAKHIGKTSGIFVKPVNMDNLEKETNSGY
 SGMWHRAEHALQRSYCINKLVNIYDSMPLRYSNIMISQFGFPYANYKRKI

TRTRPLEQKLISEEDLAANDILDYKDDDDKV

Chromatograms: https://cdn.origene.com/chromatograms/mk6268_h05.zip

Restriction Sites: SgfI-MluI

Cloning Scheme:



ACCN: NM_001439

ORF Size: 990 bp

OTI Disclaimer: The molecular sequence of this clone aligns with the gene accession number as a point of reference only. However, individual transcript sequences of the same gene can differ through naturally occurring variations (e.g. polymorphisms), each with its own valid existence. This clone is substantially in agreement with the reference, but a complete review of all prevailing variants is recommended prior to use. [More info](#)

OTI Annotation: This clone was engineered to express the complete ORF with an expression tag. Expression varies depending on the nature of the gene.

Components: The ORF clone is ion-exchange column purified and shipped in a 2D barcoded Matrix tube containing 10ug of transfection-ready, dried plasmid DNA (reconstitute with 100 ul of water).

Reconstitution Method:

1. Centrifuge at 5,000xg for 5min.
2. Carefully open the tube and add 100ul of sterile water to dissolve the DNA.
3. Close the tube and incubate for 10 minutes at room temperature.
4. Briefly vortex the tube and then do a quick spin (less than 5000xg) to concentrate the liquid at the bottom.
5. Store the suspended plasmid at -20°C. The DNA is stable for at least one year from date of shipping when stored at -20°C.

RefSeq: [NM_001439.3](#)

RefSeq Size: 3217 bp

RefSeq ORF: 993 bp

Locus ID: 2135

UniProt ID: [Q9UBQ6](#)

Cytogenetics: 1p21.2

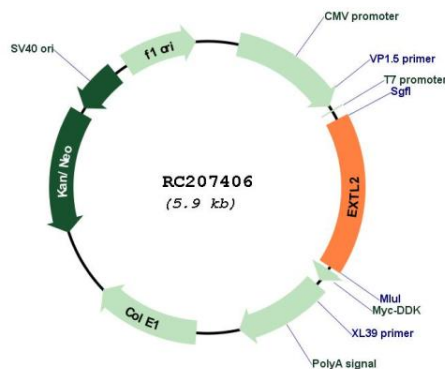
Protein Families: Transmembrane

Protein Pathways: Heparan sulfate biosynthesis

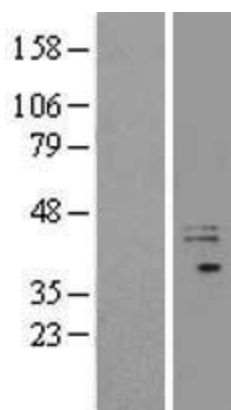
MW: 37.5 kDa

Gene Summary: Glycosyltransferase required for the biosynthesis of heparan-sulfate and responsible for the alternating addition of beta-1-4-linked glucuronic acid (GlcA) and alpha-1-4-linked N-acetylglucosamine (GlcNAc) units to nascent heparan sulfate chains.[UniProtKB/Swiss-Prot Function]

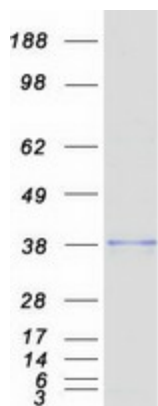
Product images:



Circular map for RC207406



Western blot validation of overexpression lysate (Cat# [LY419935]) using anti-DDK antibody (Cat# [TA50011-100]). Left: Cell lysates from untransfected HEK293T cells; Right: Cell lysates from HEK293T cells transfected with RC207406 using transfection reagent MegaTran 2.0 (Cat# [TT210002]).



Coomassie blue staining of purified EXTL2 protein (Cat# [TP307406]). The protein was produced from HEK293T cells transfected with EXTL2 cDNA clone (Cat# RC207406) using MegaTran 2.0 (Cat# [TT210002]).