

## Product datasheet for **RC207398**

### **DCP1B (NM\_152640) Human Tagged ORF Clone**

#### **Product data:**

Product Type:	Expression Plasmids
Product Name:	DCP1B (NM_152640) Human Tagged ORF Clone
Tag:	Myc-DDK
Symbol:	DCP1B
Synonyms:	DCP1
Mammalian Cell Selection:	Neomycin
Vector:	pCMV6-Entry (PS100001)
E. coli Selection:	Kanamycin (25 ug/mL)



[View online »](#)

**ORF Nucleotide Sequence:**

>RC207398 ORF sequence  
 Red=Cloning site Blue=ORF Green=Tags(s)

TTTTGTAATACGACTCACTATAGGGCGGCCGGGAATTCGTCGACTGGATCCGGTACCGAGGAGATCTGCC  
 GCC**CGGATCGCC**

ATGGCAGCCGTGGCGGCAGGCGGCCTGGTGGGAAAGGGCGCGACATCAGCCTAGCGGCCCTGCAGCGCC  
 ACGACCCCTATATCAACCGCATCGTGGACGTGGCCAGCCAGGTGGCTCTGTACACCTTCGGCCATCGGGC  
 CAACGAGTGGGAGAAAAGTATGTGGAAGGAACCTTATTTGTTTATACAAGTCTGCTTCTCCAAGCAT  
 GGATTCACCATTATGAATAGGCTGAGCATGGAAAAAGGACAGAACCTTACTAAAGACTTGGATTTC  
 AACTCCAGGACCCCTTCTTCTACAGAAATGCCAGATTGTCCATCTATGGAATTTGGTTTTATGATAA  
 GGAAGAATGCCAAAGAATTGCAGAGCTTATGAAAAACCTAACTCAGTATGAACAGTTGAAAGCCCATCAG  
 GGAAGTGGAGCAGGAATTCACCAGTGATCCTCAATTCAGGAGAGGGCAAAGAAGTAGACATTTACGAA  
 TGCTCATCAAGGCCAAAGACGAATACACAAAGTGTAAACCTGTTCTGAGCCAAAAAGATAACCAGTTC  
 CTCTGCCATCTATGACAATCCAAATCTCATCAACCAATTCAGTGAAACCCAGTGAAAACCCAGCAACAG  
 CGTATACCTCAGCCCAACAGACCTTAGACCCTGAACCCCAACACTTATCCTTGACAGCTCTGTTTGGGA  
 AGCAGGACAAAGCTACATGTGAGAAACTGTGGAGCCTCCGCAGACTCTCCACCAGCAGCAGCAGCAGCA  
 GCAGCAGCAGCAGCAAGAGAAGCTTCCAATTAGGCAGGGGGTGTACGCTCCCTGTCTATGAGGAACCC  
 AGAAGACTCACCACCCATTGAGAAGCAGCTCTGTCCAGCCATTCAGAACTCATGGTCAGGAGCGCAG  
 ACCTCCACCCATTGTGAGAGCTGCCTGAAAACCGGCCTTGTGAAAATGGCAGTACCCATTCTGCGGGAGA  
 ATTTTTTACAGGACCTGTCCAGCCAGGGTCTCCTCACAACTTGGAACTTCTCGTGGTGTACAAAATGCT  
 TCCAGAACTCAGAACCTGTTGAGAAAATTCAGAGTACCCAGGGGCAGCAAACAAGTGTGACCCTAGTA  
 CACCAGCACCTGCCAGCTCAGTGCCTGAACCCGAGCAGAGCTCCCACTTCTGTACCCCTGTGGCTCC  
 AGGAAAGGGTCTGGCTCAGCCACCACAGGCCTATTTCAATGGCTCCCTCCACCTCAGACAGTAGGACAT  
 CAGGCTCATGGAAGAGAAGTCCACACTCCCAAGACAAACTCGCCATCTCTGGTAGTACAGACTGGCA  
 GCTCTGGAGTGATCTCCCTCAAGAGTACTGAAGAAGCTTCAAGATTGTACAGCAGGAGCAGCAGCTGCA  
 TGCCTCTAACCGGCCAGCCTTGGCCGCTAAGTTTCTGTGCTCGCTCAGAGCTCTGGAACAGGGAAACCC  
 TTGGAATCCTGGATCAACAAGACACCCAACACAGAACAGCAGACTCCTCTTTCCAGGTCTCTCACCTC  
 AGCGCATCCCTGTACAGCAGCTCCGTCTGTCTATGTCCCCATGGTGTTCGCACAACCCACCTCCGT  
 CCCGCCAAAGGAAAGGGAGAGCGGCCTCTTGCCTGTGGGAGGCCAGGAGCCACCTGCTGCTGCCACCAGC  
 CTCTCTGCCCATAAGAGCCCGGAGCCCTCCGTGATCACCAGCAGCCACTCACAAGCTCCAGCTCC  
 AGGAGGCACTGTGTACCTCATTGAGAATGATGACAACTCTTAAATATAATCTATGAAGCTATCTCTT  
 CAGCATGACTCAAGCAGCCATGAAAAAGACTATG

**ACGCGT**ACGCGGCCGCTCGAGCAGAAACTCATCTCAGAAGAGGATCTGGCAGCAAATGATATCCTGGATT  
 ACAAGGATGACGACGATAAGGTTTAA

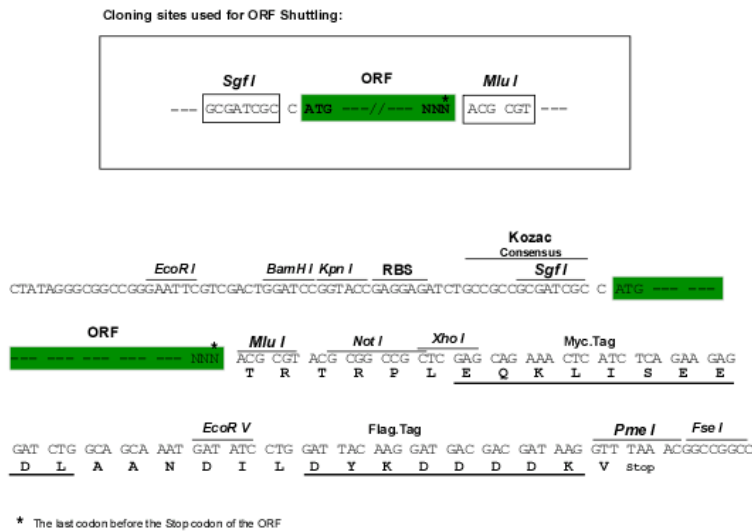
**Protein Sequence:**

>RC207398 protein sequence  
 Red=Cloning site Green=Tags(s)

MAVAAGGLVGKGRDISLAALQRHDPYINRIVDVASQVALYTFGHRANEWEKTDVEGTLFVYTRSASPKH  
 GFTIMNRLSMENRTEPITKDLDFLQDPFLLYRNARLSIYGIWFYDKEECQRIAEMLMKNLTQYEQLKAHQ  
 GTGAGISPVILNSGEGKEVDILRMLIKAKDEYTKCKTCSEPKKITSSSAIYDNPNIKPIPVKPSNQQQ  
 RIPQPNQTLDPHQHLSLTALFGKQDKATCQETVEPPQTLHQQQQQQQQQEKLPIRQGVVRSLSYEELP  
 RHRSPPIEKQLCPAIQKLMVRSADLHPLSELNRPENRSTHSAEFFTGVPVQPGSPHNIIGTRSGVQNA  
 SRTQNLFEKLQSTPGAANKCDPSTPAPASSAALNRSRAPTSVTPVAPGKGLAQPPQAYFNGSLPPQTVGH  
 QAHGREQSTLPRQTLAISGSQTGSSGVI SPQELKKLQIVQQEQQLHASNRPALAAKFPVLAQSSGTGKP  
 LESWINKTPNTEQQTPLFQVISPQRIPATAAPSLMLMSPMVAQPTSVPPKERESGLLPVGGQEPAAATS  
 LLLPIQSPPEPSVITSSPLTKLQLQEALLYLIQNDDNFLNIIYEAYLFSMTQAAMKKT

**TR**TRPLEQKLISEEDLAANDILDYKDDDDKV

Chromatograms: [https://cdn.origene.com/chromatograms/mk6341\\_b09.zip](https://cdn.origene.com/chromatograms/mk6341_b09.zip)  
 Restriction Sites: SgfI-MluI  
 Cloning Scheme:



ACCN: NM\_152640

ORF Size: 1854 bp

OTI Disclaimer: The molecular sequence of this clone aligns with the gene accession number as a point of reference only. However, individual transcript sequences of the same gene can differ through naturally occurring variations (e.g. polymorphisms), each with its own valid existence. This clone is substantially in agreement with the reference, but a complete review of all prevailing variants is recommended prior to use. [More info](#)

OTI Annotation: This clone was engineered to express the complete ORF with an expression tag. Expression varies depending on the nature of the gene.

Components: The ORF clone is ion-exchange column purified and shipped in a 2D barcoded Matrix tube containing 10ug of transfection-ready, dried plasmid DNA (reconstitute with 100 ul of water).

- Reconstitution Method:
1. Centrifuge at 5,000xg for 5min.
  2. Carefully open the tube and add 100ul of sterile water to dissolve the DNA.
  3. Close the tube and incubate for 10 minutes at room temperature.
  4. Briefly vortex the tube and then do a quick spin (less than 5000xg) to concentrate the liquid at the bottom.
  5. Store the suspended plasmid at -20°C. The DNA is stable for at least one year from date of shipping when stored at -20°C.

RefSeq: [NM\\_152640.5](#)

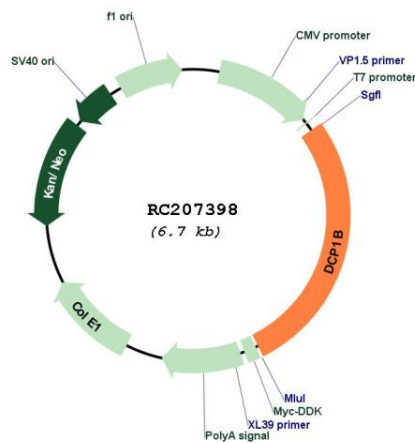
RefSeq Size: 2105 bp

RefSeq ORF: 1854 bp

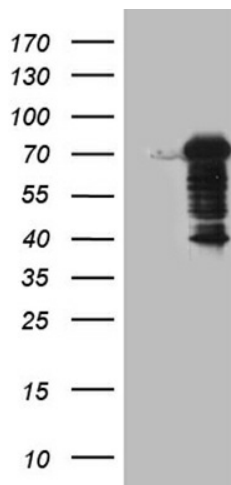
**Locus ID:** 196513  
**UniProt ID:** [Q8IZD4](#)  
**Cytogenetics:** 12p13.33  
**Protein Pathways:** RNA degradation  
**MW:** 67.8 kDa

**Gene Summary:** This gene encodes a member of a family of proteins that function in removing the 5' cap from mRNAs, which is a step in regulated mRNA decay. This protein localizes to cytoplasmic foci which are the site of mRNA breakdown and turnover. Alternative splicing results in multiple transcript variants. [provided by RefSeq, Feb 2016]

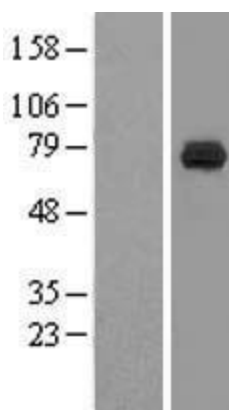
### Product images:



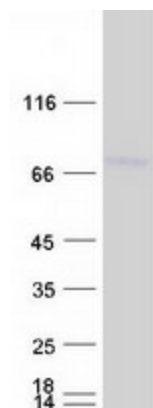
Circular map for RC207398



HEK293T cells were transfected with the pCMV6-ENTRY control (Cat# [PS100001], Left lane) or pCMV6-ENTRY DCP1B (Cat# RC207398, Right lane) cDNA for 48 hrs and lysed. Equivalent amounts of cell lysates (5 ug per lane) were separated by SDS-PAGE and immunoblotted with anti-DCP1B (Cat# [TA809933])(1:2000). Positive lysates [LY407370] (100ug) and [LC407370] (20ug) can be purchased separately from OriGene.



Western blot validation of overexpression lysate (Cat# [LY407370]) using anti-DDK antibody (Cat# [TA50011-100]). Left: Cell lysates from untransfected HEK293T cells; Right: Cell lysates from HEK293T cells transfected with RC207398 using transfection reagent MegaTran 2.0 (Cat# [TT210002]).



Coomassie blue staining of purified DCP1B protein (Cat# [TP307398]). The protein was produced from HEK293T cells transfected with DCP1B cDNA clone (Cat# RC207398) using MegaTran 2.0 (Cat# [TT210002]).