

Product datasheet for **RC207381**

C10orf72 (VSTM4) (NM_001031746) Human Tagged ORF Clone

Product data:

Product Type:	Expression Plasmids
Product Name:	C10orf72 (VSTM4) (NM_001031746) Human Tagged ORF Clone
Tag:	Myc-DDK
Symbol:	C10orf72
Synonyms:	C10orf72
Mammalian Cell Selection:	Neomycin
Vector:	pCMV6-Entry (PS100001)
E. coli Selection:	Kanamycin (25 ug/mL)
ORF Nucleotide Sequence:	>RC207381 ORF sequence Red=Cloning site Blue=ORF Green=Tags(s)

TTTTGTAATACGACTCACTATAGGGCGGCCGGAATTCGTCGACTGGATCCGGTACCGAGGAGATCTGCC
GCC**CGATCGCC**

ATGCGGCTGCTGGCACTGGCGGGCGCCGCTGCTGGCGGGCTCCGGCTCCGGAGGTCTGTGCGGCC
TCAATGCACTGTGTCCCGGGCCCGTGGTTGACTACCTGGAGGGGAGAATGCCACTCTCTCTGCCA
CGTCTCCAGAAAAGCGGAAGGACAGCTTGTGGCCGTGCGCTGGTTCTTTGCACACTCCTCCGACTCC
CAGGAGGCCTTGATGGTGAAGATGACCAAGCTCCGGTGGTGCAGTACTATGGGAATTCAGCCGACGG
CCAAACGGCGGAGGCTGCGCCTGCTGGAGGAGCAGCGGGGGCGCTCTACAGGCTCTCCGCTTGACT
GCAGCCCTCCGATCAAGGCATTACGTCTGCAGAGTCCAGGAAATCAGCAGGCACAGGAACAAGTGACG
GCCTGGTCCAATGGCTCCTCAGCCACGGAATGAGAGTCAATTCCTCAAAGCTTCTGAAGATCATCCT
TTGAGAAAACAAAAGAGACTTGGGCATTTTTTGAAGATCTCTATGTGTATGCTGTCTCGTGTGCTGCGT
GGGGATCCTCAGCATTCTGCTTTCATGCTGGTCATCGTCTGGCAGTCTGTGTTAAACAGCGGAAATCC
AGAGTGAGACATTATTTGGTGAATGCCCTCAGAACAGCTCAGGGGAGACTGTCACTAGCGTGACCAGCT
TGGCCCACTACAGCCCAAGAAGGGCAGGAGGCAGAAGGAGAAGCCTGACATTCCTCCAGCAGTCCCTGC
CAAAGCTCCGATAGCCCCACGTTCCATAAACCGAAGCTGCTGAAACCACAGAAAAAGTCACGCTGCCA
AAGATTGCTGAGGAAACTTAACCTATGCCGAGCTGGAGCTGATCAAACCCACCGGGCTGCCAAAGGCG
CCCCACCAGCACTGTCTACGCCAGATCCTCTTCGAGGAGAACAAGCTG

ACGCGTACGCGGGCGCTCGAGCAGAAACTCATCTCAGAAGAGGATCTGGCAGCAAATGATATCCTGGATT
ACAAGGATGACGACGATAAGGTTTAA



[View online »](#)

Protein Sequence: >RC207381 protein sequence
Red=Cloning site Green=Tags(s)

MRLLLAAAALLARAPAPEVCAALNVTVSPGPVVDYLEGENATLLCHVSQKRRKDSLLAVRWFFAHSSDS
 QEALMVKMTKLRVVQYYGNFSRSKRRLRLLEEQRGALYRLSVLTLQPSDQGHYVCRVQEI SRHRNKWT
 AWSNGSSATEMRVISLKAEESSFEKTKETWAFEDLYVYAVLVCCVGILSILLFMLVIWQSVFNKRKS
 RVRHYLVKCPQNSSGETVTSVTSAPLQPKKGRQKEKPDIPPAVPAKAPIAPTFHKPKLLKPQRKVTLP
 KIAEENLTYAELELIKPHRAAKGAPTSTVYAQILFEENKL

TRTRPLEQKLISEEDLAANDILDYKDDDDKV

Chromatograms: https://cdn.origene.com/chromatograms/mk6861_h04.zip

Restriction Sites: SgfI-MluI

Cloning Scheme:



ACCN: NM_001031746

ORF Size: 960 bp

OTI Disclaimer: The molecular sequence of this clone aligns with the gene accession number as a point of reference only. However, individual transcript sequences of the same gene can differ through naturally occurring variations (e.g. polymorphisms), each with its own valid existence. This clone is substantially in agreement with the reference, but a complete review of all prevailing variants is recommended prior to use. [More info](#)

OTI Annotation: This clone was engineered to express the complete ORF with an expression tag. Expression varies depending on the nature of the gene.

Components: The ORF clone is ion-exchange column purified and shipped in a 2D barcoded Matrix tube containing 10ug of transfection-ready, dried plasmid DNA (reconstitute with 100 ul of water).

Reconstitution Method:

1. Centrifuge at 5,000xg for 5min.
2. Carefully open the tube and add 100ul of sterile water to dissolve the DNA.
3. Close the tube and incubate for 10 minutes at room temperature.
4. Briefly vortex the tube and then do a quick spin (less than 5000xg) to concentrate the liquid at the bottom.
5. Store the suspended plasmid at -20°C. The DNA is stable for at least one year from date of shipping when stored at -20°C.

RefSeq: [NM_001031746.2](#)

RefSeq Size: 6428 bp

RefSeq ORF: 963 bp

Locus ID: 196740

UniProt ID: [Q8IW00](#)

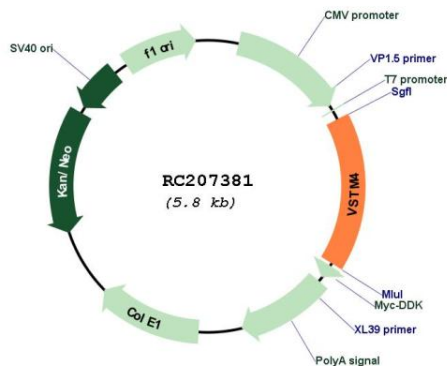
Cytogenetics: 10q11.23

Protein Families: Transmembrane

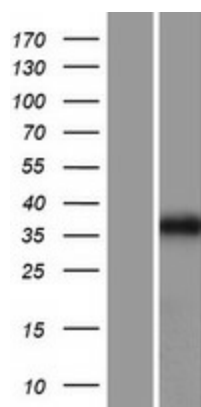
MW: 36.1 kDa

Gene Summary: Peptide Lv enhances L-type voltage-gated calcium channel (L-VGCC) currents in retinal photoreceptors.[UniProtKB/Swiss-Prot Function]

Product images:



Circular map for RC207381



Western blot validation of overexpression lysate (Cat# [LY422189]) using anti-DDK antibody (Cat# [TA50011-100]). Left: Cell lysates from untransfected HEK293T cells; Right: Cell lysates from HEK293T cells transfected with RC207381 using transfection reagent MegaTran 2.0 (Cat# [TT210002]).