

Product datasheet for **RC207376**

CKlfsf8 (CMTM8) (NM_178868) Human Tagged ORF Clone

Product data:

Product Type:	Expression Plasmids
Tag:	Myc-DDK
Symbol:	Cklfsf8
Synonyms:	CKLFSF8; CKLFSF8-V2
Mammalian Cell Selection:	Neomycin
Vector:	pCMV6-Entry (PS100001)
E. coli Selection:	Kanamycin (25 ug/mL)

ORF Nucleotide Sequence: >RC207376 ORF sequence
Red=Cloning site Blue=ORF Green=Tags(s)

TTTTGTAATACGACTCACTATAGGGCGGCCGGAATTCGTCTGACTGGATCCGGTACCGAGGAGATCTGCC
GCC**CGATCGCC**

ATGGAGGAGCCGACGCGCGCCGCTCGCACACAGTCACCACCACCGCCAGCTCCTTCGAGAGAATTCT
CCACCAGCAGCAGCAGCTTCGCCTACGACCGGAGTTCTCCGCACCCTGCACGGCTTCCTCATCGTGGC
CGAGATCGTTCTGGGGCTGTGGTATGGACGCTTATTGCTGGAAGTACTTCCGGGTCCAGCATTT
GGCTGGGTGATGTTGTAGCTGATCTTACTGGGTCTCACCGTCTTCTCCTCATTATCTACATAACAA
TGACCTACACCAGGATCCCCAGGTGCCCTGGACAACAGTGGGCTGTGCTTTAACGGCAGTGCCTTCGT
CTTGACCTCTCTGCCGCTGTTGTAGATGCATCTCCGTCTCCCTGAGAGGGACAGTCACAACCTCAAC
AGCTGGGCGGCCTCATGTTCTTTGCCTTCTGGTCACCATCTGCTACGCTGGAATACATATTTAGTT
TTATAGCATGGAGATCCAGGACCATACAG

ACGCGTACGCGGCCGCTCGAGCAGAACTCATCTCAGAAGAGGATCTGGCAGCAATGATATCCTGGATT
ACAAGGATGACGACGATAAGGTTTAA

Protein Sequence: >RC207376 protein sequence
Red=Cloning site Green=Tags(s)

MEEPQRARSHVTVTASSFAENFSTSSSFAYDREFLRTLHGFLIVAEIVLGLLVWTLIAGTEYFRVPAF
GWVMFVAVSYWVLTVFFLLIIYITMTYTRIPQVPWTTVGLCFNGSAFVLYLSAAVVDASSVSPERDSHNFN
SWAASSFFAFLVTICYAGNTYFSFIWRSRTIQ

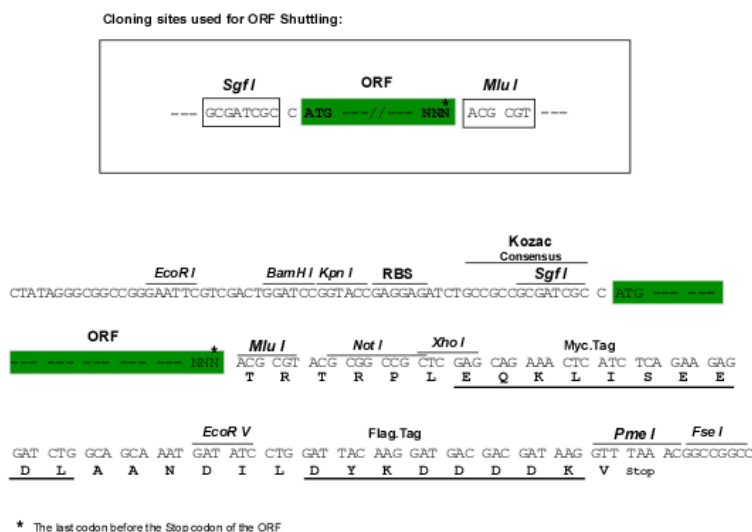
TRTRPLEQKLISEEDLAANDILDYKDDDDKV

Chromatograms: https://cdn.origene.com/chromatograms/mk6340_f05.zip



Restriction Sites: SgfI-MluI

Cloning Scheme:



ACCN: NM_178868

ORF Size: 519 bp

OTI Disclaimer: The molecular sequence of this clone aligns with the gene accession number as a point of reference only. However, individual transcript sequences of the same gene can differ through naturally occurring variations (e.g. polymorphisms), each with its own valid existence. This clone is substantially in agreement with the reference, but a complete review of all prevailing variants is recommended prior to use. [More info](#)

OTI Annotation: This clone was engineered to express the complete ORF with an expression tag. Expression varies depending on the nature of the gene.

Components: The ORF clone is ion-exchange column purified and shipped in a 2D barcoded Matrix tube containing 10ug of transfection-ready, dried plasmid DNA (reconstitute with 100 ul of water).

Reconstitution Method:

1. Centrifuge at 5,000xg for 5min.
2. Carefully open the tube and add 100ul of sterile water to dissolve the DNA.
3. Close the tube and incubate for 10 minutes at room temperature.
4. Briefly vortex the tube and then do a quick spin (less than 5000xg) to concentrate the liquid at the bottom.
5. Store the suspended plasmid at -20°C. The DNA is stable for at least one year from date of shipping when stored at -20°C.

Note: Plasmids are not sterile. For experiments where strict sterility is required, filtration with 0.22um filter is required.

RefSeq: NM_178868.5

RefSeq Size: 1185 bp

RefSeq ORF: 522 bp

Locus ID: 152189

UniProt ID: [Q8IZV2](#)

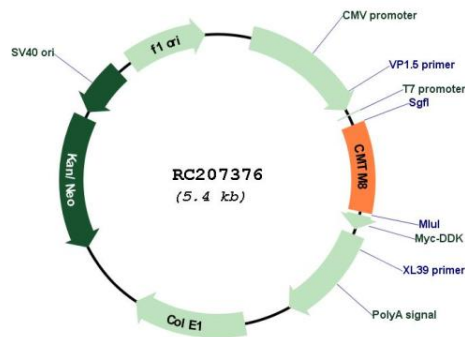
Cytogenetics: 3p22.3

Protein Families: Transmembrane

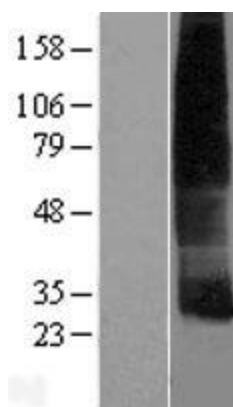
MW: 19.6 kDa

Gene Summary: This gene belongs to the chemokine-like factor gene superfamily, a novel family that is similar to the chemokine and the transmembrane 4 superfamilies. This gene is one of several chemokine-like factor genes located in a cluster on chromosome 3. This gene acts as a tumor suppressor, and plays a role in regulating the migration of tumor cells. The encoded protein is thought to function as a negative regulator of epidermal growth factor-induced signaling. Alternative splicing results in multiple transcript variants encoding different isoforms. [provided by RefSeq, Feb 2016]

Product images:



Circular map for RC207376



Western blot validation of overexpression lysate (Cat# [LY405830]) using anti-DDK antibody (Cat# [TA50011-100]). Left: Cell lysates from un-transfected HEK293T cells; Right: Cell lysates from HEK293T cells transfected with RC207376 using transfection reagent MegaTran 2.0 (Cat# [TT210002]).