

Product datasheet for **RC207369**

TCERG1L (NM_174937) Human Tagged ORF Clone

Product data:

Product Type:	Expression Plasmids
Product Name:	TCERG1L (NM_174937) Human Tagged ORF Clone
Tag:	Myc-DDK
Symbol:	TCERG1L
Mammalian Cell Selection:	Neomycin
Vector:	pCMV6-Entry (PS100001)
E. coli Selection:	Kanamycin (25 ug/mL)



[View online »](#)

ORF Nucleotide Sequence:

>RC207369 representing NM_174937
 Red=Cloning site Blue=ORF Green=Tags(s)

TTTTGTAATACGACTCACTATAGGGCGGCCGGAATTCGTCGACTGGATCCGGTACCGAGGAGATCTGCC
 GCC**CGGATCGCC**

ATGGTGCCGGGCTCGGCCGGGCTGCTCCGGCTCAGCGCGGGGTGCTGGTTCCTCCGGTGTCTCGCCT
 CGGCCCGCCCGCCGCGGCCCGCTGCTCCCGGTCTCCCGGCTGGCCGCCCCGAGCGAGCCGGTGT
 CCCGCTGTGCCCTGCTGCGCCAGACTCCGCCCGCCGCGCCGCGCACCCCTTCCCGCGCTC
 CACGGGAGTGGCTGTTTGGTGGCATTCTCCGTCCTAGGACTGCCCCCTTCCACAGTGGAGCTGG
 TGCCCGTCTTCCACATCTGCGCTTCTGCTTGTCAACCCCTATTGGGAAAAGTTGGATAGACAAAAG
 GATTCCTAACTGAAGATCTTTTTTAATAATTCCTTTGCTCTGGACTCAACGTGGATACATCCTGAGGAG
 TCAAGGTTTTTCCATGGGCATGAAAAGCCTCGTTTGTGGCAAATCAAGTAGCTGTGTCTGTCCAGGC
 CGGCTCCTGCCTCAGGCCGCTCCCGCGGTGGTGTAGCACCTCAGCCATCCAGGTGGTCCATAA
 CAGCCTTAAGGTGACCAGCAGCCCGCCATTGCCATCGCCACCGCCGCGCGCTGCCATGCTCCGCTG
 GACCTGAGAACCTCCGGGGCCGCTCCCGCTCCAGCGTGCAGCCGCGCCACTTCCGACCTTGGCACCCA
 TCAAAATACCCCTCCGGACGTCCCGTCTCAGATACAAGGACAGAGCGGGCCGAGTGGCCCGCCCTCC
 TGCCCTGATGCTGCGGGCCAGAAGAGCCGGATGGAGACAAAGAAGACAAGGAGCCTCCACCGATGCTG
 GGGGAGGAGAGGACAGCACAGCCAGAGGCAACAGGCCAGTGGCTCCACCCAGGTGCCCGGATCCCGCT
 GGTGTGTGGTCTGGACGGGCGATGACCGAGTTTTCTTCTCAACCAACGATGCACCTGTCTGTCTGGGA
 GAAGCCCATGGACCTGAAGGACCGGAGACCTCAACAGGATCATTGAGGACCCGCCCAACGAAGCAAG
 CTGGAGGCACCACTGACAACAGCGATGGTCCAGTTCTGAAGACAACAGGGAAGACCAAGATGTGA
 AAACCAAGAGGAACCGGACCGAAGGCTCGGGAGTCCCAAGCCAGAGGAGGCAAGAGAGGACAAAGG
 CACAAGGACGCCCGCCCGCAGATCCTCCTGCCTCTGGAGGAGCGTGTGACCCACTTCCGAGACATGCTG
 CTGGAGAGAGGGTATCAGCATTTTCTACCTGGGAGAAAGAAATACACAAAATCGTGTGTTGACCCAGCT
 ATCTCCTGCTCAACTCTGAGGAACGAAAGCAGATATTTGAACAGTTTGTCAAGACAAGAATAAAGAAGA
 ATACAAGGAAAAGAAAAGTAAATGCTGCTAGCCAAAGAAGAAATCAAGAAACTTCTAGAGAAATCTAAA
 GTGTCTCCAGGACCACGTTTAAGGAGTTTGCAGAGAAATACGGCCGGGATCAGAGGTTCCGACTTGTT
 AAAAAAGAAAGGACCAGGAGCATTTTTTCAACAAATTCATACTATTCTTAAGAAACGGGACAAGGAAA
 CAGACTAAGGCTCGGAAAATGAGA

ACGCGTACGCGGCCGCTCGAGCAGAAACTCATCTCAGAAGAGGATCTGGCAGCAAATGATATCCTGGATT
 ACAAGGATGACGACGATAAGGTTTAA

Protein Sequence:

>RC207369 representing NM_174937
 Red=Cloning site Green=Tags(s)

MVPGSAGLLRLSAGVVVPPVLLASAPPPAAPLLPGLPGWPAPSEPVLPLPLPSAPDSAAAAAHPFPAL
 HGQWLFGGHSPSLGLPPSSTVELVPVPHLCPSALATPIGKSWIDKRIPNCKIFFNNSFALDSTWIHPPEE
 SRFHHGHEKPRLLANQVAVLSRPAPASRPLPTVVLAPQPIPGGCHNSLKVTSPPAIAIATAAAAAMVSV
 DPENLRGSPSSVQPRHFLTLAPIKIPLRTSPVSDTRTERGRVARPPALMLRAQKSRDGDKEDEKPPMML
 GGGEDSTARGNRPVASTQVPGSPWCVVWTGDDRFFFNPTMHLVWEKPMDLKDRGDLNRIEDPPHKKR
 LEAPATDNSDGSSEDNREDQVKTNRNREGCGSPKPEEAKREDKGRTPPPQILLPLEERVTHFRDML
 LERGVSFAFSTWEKELHKIVFDPRYLLLNSEERKQIFEQFVKTRIKEEYKEKSKLLLAKEEFKLLLEKSK
 VSPRTTFKEFAEKYGRDQRFRLVQKRKQEHFFNKFILILKKRDKENRLRLKMR

TRTRPLEQKLISEEDLAANDILDYKDDDDKV

Chromatograms:

https://cdn.origene.com/chromatograms/mg3523_e03.zip

Restriction Sites:

Sgfl-Mlul

Cloning Scheme:

Cloning sites used for ORF Shutting:



* The last codon before the Stop codon of the ORF

ACCN: NM_174937

ORF Size: 1635 bp

OTI Disclaimer: The molecular sequence of this clone aligns with the gene accession number as a point of reference only. However, individual transcript sequences of the same gene can differ through naturally occurring variations (e.g. polymorphisms), each with its own valid existence. This clone is substantially in agreement with the reference, but a complete review of all prevailing variants is recommended prior to use. [More info](#)
OTI Annotation: This clone was engineered to express the complete ORF with an expression tag. Expression varies depending on the nature of the gene.

Components: The ORF clone is ion-exchange column purified and shipped in a 2D barcoded Matrix tube containing 10ug of transfection-ready, dried plasmid DNA (reconstitute with 100 ul of water).

- Reconstitution Method:**
1. Centrifuge at 5,000xg for 5min.
 2. Carefully open the tube and add 100ul of sterile water to dissolve the DNA.
 3. Close the tube and incubate for 10 minutes at room temperature.
 4. Briefly vortex the tube and then do a quick spin (less than 5000xg) to concentrate the liquid at the bottom.
 5. Store the suspended plasmid at -20°C. The DNA is stable for at least one year from date of shipping when stored at -20°C.

RefSeq: [NM_174937.2](#)
RefSeq Size: 2632 bp

RefSeq ORF: 1761 bp

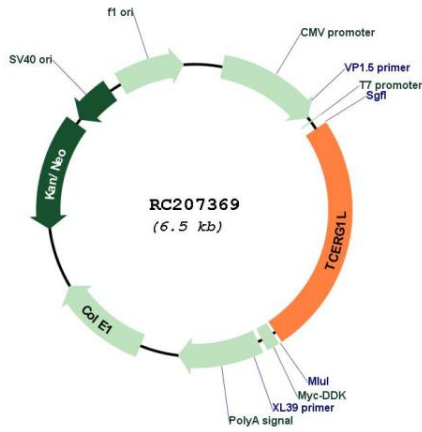
Locus ID: 256536

UniProt ID: [Q5VWI1](#)

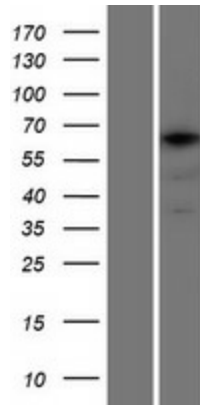
Cytogenetics: 10q26.3

MW: 65.5 kDa

Product images:



Circular map for RC207369



Western blot validation of overexpression lysate (Cat# [LY406339]) using anti-DDK antibody (Cat# [TA50011-100]). Left: Cell lysates from untransfected HEK293T cells; Right: Cell lysates from HEK293T cells transfected with RC207369 using transfection reagent MegaTran 2.0 (Cat# [TT210002]).