

## Product datasheet for **RC207363**

### Netrin G1 ligand (LRRC4C) (NM\_020929) Human Tagged ORF Clone

#### Product data:

Product Type:	Expression Plasmids
Product Name:	Netrin G1 ligand (LRRC4C) (NM_020929) Human Tagged ORF Clone
Tag:	Myc-DDK
Symbol:	Netrin G1 ligand
Synonyms:	NGL-1; NGL1
Mammalian Cell Selection:	Neomycin
Vector:	pCMV6-Entry (PS100001)
E. coli Selection:	Kanamycin (25 ug/mL)



[View online »](#)

ORF Nucleotide  
Sequence:

>RC207363 ORF sequence  
Red=Cloning site Blue=ORF Green=Tags(s)

TTTTGTAATACGACTCACTATAGGGCGGCCGGAATTCGTCGACTGGATCCGGTACCGAGGAGATCTGCC  
GCCGCGATCGCC

ATGTTGAACAAGATGACCTTACATCCACAGCAGATAATGATAGGTCCTAGGTTTAAACAGGGCCCTATTTG  
ACCCCTGCTTGTGGTGTCTGCTGGCTCTTCAACTTCTTGTGGTGGCTGGTCTGGTGGGGCTCAGACCTG  
CCCTTCTGTGTGCTCCTGCAGCAACCAAGTTCAGCAAGGTGATTTGTGTTGCGAAAAAACCCTGCGTGAGGTT  
CCGGATGGCATCTCCACCAACACACGGCTGCTGAACCTCCATGAGAACCAATCCAGATCATCAAAGTGA  
ACAGCTTCAAGCACTTGAGACACTTGGAAATCCTACAGTTGAGTAGGAACCATATCAGAACCATTGAAAT  
TGGGGCTTCAATGGTCTGGCGAACCTCAACACTCTGGAACCTTTGACAATCGTCTTACTACCATCCC  
AATGGAGCTTTTGTATACTTGTCTAAACTGAAGGAGCTCTGGTTGCGAAACAACCCATTGAAAGCATCC  
CTTCTTATGCTTTTAAACAGAATTCCTTCTTTCGCGGACTAGACTTAGGGGAATTGAAAAGACTTTCATA  
CATCTCAGAAGGTGCCTTTGAAGTCTGTCCAACCTTGAGGTATTTGAACCTTGCCATGTGCAACCTTCGG  
GAAATCCCTAACCTCACACCGCTCATAAACTAGATGAGCTGGATCTTCTGGAATCATTATCTGCCA  
TCAGGCCTGGCTCTTCCAGGGTTTGATGCACCTTCAAAAACCTGTGGATGATACAGTCCCAGATTCAAGT  
GATTGAACGGAATGCCTTTGACAACCTTCAGTCACTAGTGGAGATCAACCTGGCACAATAATCTAACA  
TACTGCCTCATGACCTTTCACCTCCCTTGATCATCTAGAGCGGATACATTTACATCACAACCTTGG  
ACTGTAACCTGTGACATACTGTGGCTCAGCTGGTGGATAAAAGACATGGCCCCGTCGAACACAGCTTGTG  
TGCCCCGTGTAACACTCCTCCCAATCTAAAGGGGAGGTACATTGGAGAGCTCGACCAGAATTACTTCACA  
AATGTCGGGCCTCCACATCCCTGACATCTGTATCTTGGATTACTCCAAATGGAACAGTCATGACACATGG  
GGCGTACAAAGTGCGGATAGCTGTGCTCAGTGATGGTACGTTAAATTTACAAATGTAACCTGTGCAAGAT  
ACAGGCATGTACACATGTATGGTGAATAATCCGTTGGGAATACTACTGCTTCAGCCACCCTGAATGTTA  
CTGCAGCAACCACTACTCTTCTTACTTTTCAACCGTCACAGTAGAGACTATGGAACCGTCTCAGGA  
TGAGGCACGGACCACAGATAACAATGTGGTCCCCTCCAGTGGTTCGACTGGGAGACCACCAATGTGACC  
ACCTCTCTCACACCACAGAGCACAAGGTCGACAGAGAAAACCTTACCATCCCAGTACTGATATAAACA  
GTGGGATCCCAGGAATTGATGAGGTCATGAAGACTACCAAAATCATCATTGGGTGTTTTGTGGCCATCAC  
ACTCATGGCTGCAGTGATGCTGGTCATTTCTACAAGATGAGGAAGCAGCACCATCGGCAAAACCATCAC  
GCCCAACAAGGACTGTTGAAATTATTAATGTGGATGATGAGATTACGGGAGACACCCATGGAAGCC  
ACCTGCCATGCCTGCTATCGAGCATGAGCACCTAAATCACTATAACTCATAAAATCTCCCTTCAACCA  
CACAACAACAGTTAACACAATAAATTCAATACACAGTTCAGTGATGAACCGTTATTGATCCGAATGAAC  
TCTAAAGACAATGTACAAGAGACTCAAATC

ACGCGTACGCGGCCGCTCGAGCAGAACTCATCTCAGAAGAGGATCTGGCAGCAATGATATCCTGGATT  
ACAAGGATGACGACGATAAGGTTTAA

**Protein Sequence:** >RC207363 protein sequence  
Red=Cloning site Green=Tags(s)

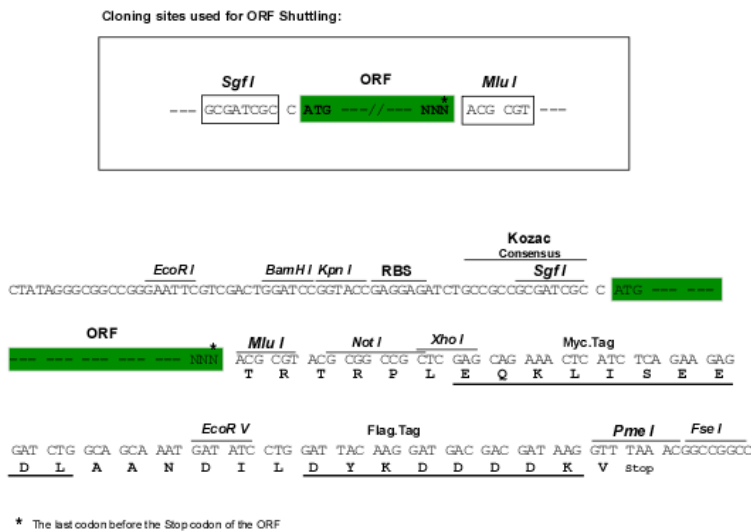
MLNKMTLHPQQIMIGPRFNRALFDPLLVLLALQLLVVAGLVRAQTCPVCSNQSFKVICVRKNLREV  
 PDGISTNTRLLNLHENQIQIIVNSFKHLRHLEILQLSRNHIRTIEIGAFNGLANLNTLELFDNRLTTIP  
 NGAFVYLSKLELWLRNNPIESIPSYAFNRIPSLRRLDLGELKRLSYISEGAFEGLSNLRVYLNLMACNLR  
 EIPNLTPLIKLELDL SGNHLSAIRPGSFQGLMHLQKLWMIQSQIQVIERNAFDNLQSLVEINLAHNNLT  
 LLPHDLFTPLHHLERIHLLHNPWNCNDILWLSWWIKMAPSNTACCARCNTPPNLKGRYIGELDQNYFT  
 CYAPVIVEPPADLVNTEGMAAELKCRASLTSVSWITPNTVMTHGAYKVRIAVLSDGTLNFTNVTVQD  
 TGMVTCMVSNSVGNNTASATLVNTAATTPFSYFSTVTVETMEPSQDEARTTDNNVGTPVVDWETTNTV  
 TSLTPQSTRSTKFTTIPVTDINSIGIPGIDEVMKTTKIIIGCFVAITLMAAVMLVIFYKMRKQHRQNH  
 APTRTVEIINVDDEITGDTMPESHLPMPAIEHEHLNHYSYKSPFNHTTTVNTINSIHSSVHEPLLIRM  
 SKDNVQETQI

TRTRPLEQKLISEEDLAANDILDYKDDDDKV

**Chromatograms:** [https://cdn.origene.com/chromatograms/mk6340\\_c03.zip](https://cdn.origene.com/chromatograms/mk6340_c03.zip)

**Restriction Sites:** SgfI-MluI

**Cloning Scheme:**



**ACCN:** NM\_020929

**ORF Size:** 1920 bp

**OTI Disclaimer:** The molecular sequence of this clone aligns with the gene accession number as a point of reference only. However, individual transcript sequences of the same gene can differ through naturally occurring variations (e.g. polymorphisms), each with its own valid existence. This clone is substantially in agreement with the reference, but a complete review of all prevailing variants is recommended prior to use. [More info](#)

**OTI Annotation:** This clone was engineered to express the complete ORF with an expression tag. Expression varies depending on the nature of the gene.

**Components:** The ORF clone is ion-exchange column purified and shipped in a 2D barcoded Matrix tube containing 10ug of transfection-ready, dried plasmid DNA (reconstitute with 100 ul of water).

**Reconstitution Method:**

1. Centrifuge at 5,000xg for 5min.
2. Carefully open the tube and add 100ul of sterile water to dissolve the DNA.
3. Close the tube and incubate for 10 minutes at room temperature.
4. Briefly vortex the tube and then do a quick spin (less than 5000xg) to concentrate the liquid at the bottom.
5. Store the suspended plasmid at -20°C. The DNA is stable for at least one year from date of shipping when stored at -20°C.

**RefSeq:** [NM\\_020929.2](#)

**RefSeq Size:** 2626 bp

**RefSeq ORF:** 1923 bp

**Locus ID:** 57689

**UniProt ID:** [Q9HCJ2](#)

**Cytogenetics:** 11p12

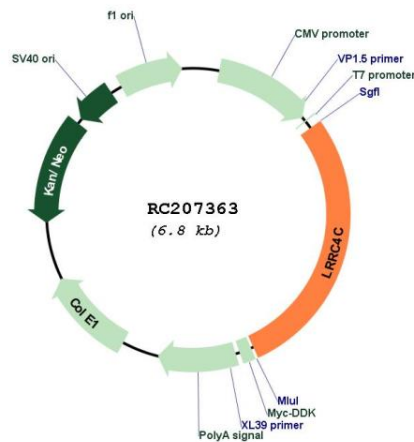
**Protein Families:** Druggable Genome, Transmembrane

**Protein Pathways:** Axon guidance

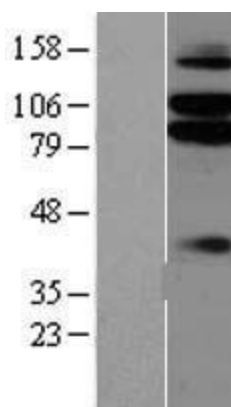
**MW:** 71.9 kDa

**Gene Summary:** NGL1 is a specific binding partner for netrin G1 (NTNG1; MIM 608818), which is a member of the netrin family of axon guidance molecules (Lin et al., 2003 [PubMed 14595443]).[supplied by OMIM, Mar 2008]

**Product images:**



Circular map for RC207363



Western blot validation of overexpression lysate (Cat# [LY412226]) using anti-DDK antibody (Cat# [TA50011-100]). Left: Cell lysates from untransfected HEK293T cells; Right: Cell lysates from HEK293T cells transfected with RC207363 using transfection reagent MegaTran 2.0 (Cat# [TT210002]).