

## Product datasheet for **RC207361**

### TIGD4 (NM\_145720) Human Tagged ORF Clone

#### Product data:

Product Type:	Expression Plasmids
Product Name:	TIGD4 (NM_145720) Human Tagged ORF Clone
Tag:	Myc-DDK
Symbol:	TIGD4
Mammalian Cell Selection:	Neomycin
Vector:	pCMV6-Entry (PS100001)
E. coli Selection:	Kanamycin (25 ug/mL)



[View online »](#)

**ORF Nucleotide Sequence:**

>RC207361 ORF sequence  
 Red=Cloning site Blue=ORF Green=Tags(s)

TTTTGTAATACGACTCACTATAGGGCGGCCGGAATTCGTCGACTGGATCCGGTACCGAGGAGATCTGCC  
 GCC**CGCATCGCC**

ATGGCAGAAGCTTCTGTGGATGCCTCAACTCTGCCTGTAAACAGTGAAGAAAAAGAAAAGCCTATCCATTG  
 AGGAAAAGATCGACATCATAAATGCAGTGGAAAGTGGCAAGAAAAAGCAGAGATTGCTGCTGAATATGG  
 AATAAAGAAAAATTCATTGTCTTCTATTATGAAGAATAAAGACAAAAGTTCTAGAAGCCTTTGAATCTCTA  
 AGATTTGATCCAAAGAGAAAAAGACTGAGAAGTCTTTTTACACAGATCTGGAAGAGGCATTAATGAGAT  
 GGTATCGAATTGCTCAGTGTCTAAATGTACCAGTTAATGGTCCGATGTTACGCTCTAAAAGCTAATGATTT  
 TGCCAGAAAAGTGGCCATAATGATTTTAAAGTGCAGTAATGGTTGGCTGGATCGTTTTAAATCCAGGTAT  
 GGTTTAGTATTCAGAGCTCAACCTGTAGAAGCTACAGGTGTACCAGTAGACCCTTCGACTGTCTGGTACC  
 AAAATGTACTTCCTTATTATTTAAATGATTATCATCTCTAAAAATGTTTTTAAATATAAAGAGACTGGCT  
 GCTTTATCGAATGTTACCTACCAATACATTTGCATTTAAAGGCGAAACATGTTCCAGTTGGAAGTTATGC  
 AAAGACAGAATAACTCTGGTGGTTGGCACAACATGGATGGCTCAGAGAACTTCCTTTGCTTGTCAATTG  
 GAAAAAGAGAAGTCCACATTGTTTCAAAGGTTTAAAAATCATTGCCTGTGTGTTATGAAGCTAACAGAAT  
 GGCATGGATGACCTCCGATGATTTGAACAATGGATGCGAAAGCTTGTAGAGAAATTTCAAGCCCAGCAA  
 CGAAGAGTGGTGATTTTTGTTGAGTCTTTCCAGCACATCCAGAGGTAAGAACCATAAATCCATTGAGT  
 TAGCATTCTTCCATCATGTTTATCTTCCAAATGTATAGCTATGAAACAAGGTGTTATTAAGCCCTTAA  
 AATCAAATATCGACACTGCTTATCAAGAAATTTTAAAGTCTGTTGAAGGTAGCAAAGAATTTACATTT  
 TCACACTAGATGCAGTTGATACATTGCATCTTTGCTGGAGGGCTGAACCCAGAGACTATTGTTAAAA  
 GCTATGAAGAGGCAGGATTCAAATCTCAAAGGGAGAAAGTACATAACAATGCAGAGAAAGGACTGCTGG  
 TCTGGATTTGGTTGCTGATGCTCTGGGGCAGGAGTAGAATTTCCCTGAAGGTTTATCTATAGAAGAATAT  
 GCTGCCCTGGATGATGATTTGGAGACATGTGAAGCAGCACCAAAATGGTGATTCGCTATGCACCAAGAAA  
 GTAATCGGATGAAACTGGATTTTACACTTCTGATGAAGAGGATGATGATGGATCTCCAGGAACTGAACT  
 CCCTTTACCATCAAAATCTGAGGCAATAACTGCTTTAGATACTCTGAAAAAATTTCTCAGAAGTCAAGAT  
 ATGAATGACGGACTTCAAATCTTTAGCAGACCTTAAAATTTTATAACTCTTTATCACCTAAG

**ACGCGT**ACGCGGCCGCTCGAGCAGAAACTCATCTCAGAAGAGGATCTGGCAGCAAATGATATCTGGATT  
 ACAAGGATGACGACGATAAGGTTTAA

**Protein Sequence:**

>RC207361 protein sequence  
 Red=Cloning site Green=Tags(s)

MAEASVDASTLPVTVKKKKSLSIEEKIDIINAVESGKKKAEIAAEYGIKKNSLSSIMKNKDKVLEAFESL  
 RFDPKRRLRTAFYTDLEEALMRWYRIAQCLNVPVNGPMLRLKANDFAQKLGHNDFKCSNGWLDRFKSR  
 YGLVFRAQPVVEATGVPVDPSTVWYQNVLPYYLNDYHPKNVFNIKETGLLYRMLPTNTFAFKGETCSV  
 GKLCADRITLVVGTNMDGSEKLP LLVIGKKRTPHCFKGLKSLPVCYEANRMAWMTSDVFEQWMRKLD  
 DEEFQAQQRRVVIFVESFPAHPEVKNLKSIELAFFPSCLSSKCIAMKQGVIKSLKIKYRHLIKKFLS  
 VEGSKEFTFSLLDVAVDTLHLCWRAVTPETIVKSYEEAGFKSQKGESDITNAEKDTGLDLVADALGAG  
 VEFPEGLSIEEY AALDDDLETCEAAPNGDSVCTKESKSDETGFYTSDEEDDDGSPGTELPLPSKSE  
 AITALD TLKKFLRSQDMNDGLQNSLADLENFINSLSPK

**TR**TRPLEQKLISEEDLAANDILDYKDDDDKV

**Chromatograms:**

[https://cdn.origene.com/chromatograms/mk6340\\_c12.zip](https://cdn.origene.com/chromatograms/mk6340_c12.zip)

**Restriction Sites:**

Sgfl-MluI

**Cloning Scheme:**


**ACCN:** NM\_145720

**ORF Size:** 1536 bp

**OTI Disclaimer:** The molecular sequence of this clone aligns with the gene accession number as a point of reference only. However, individual transcript sequences of the same gene can differ through naturally occurring variations (e.g. polymorphisms), each with its own valid existence. This clone is substantially in agreement with the reference, but a complete review of all prevailing variants is recommended prior to use. [More info](#)

**OTI Annotation:** This clone was engineered to express the complete ORF with an expression tag. Expression varies depending on the nature of the gene.

**Components:** The ORF clone is ion-exchange column purified and shipped in a 2D barcoded Matrix tube containing 10ug of transfection-ready, dried plasmid DNA (reconstitute with 100 ul of water).

**Reconstitution Method:**

1. Centrifuge at 5,000xg for 5min.
2. Carefully open the tube and add 100ul of sterile water to dissolve the DNA.
3. Close the tube and incubate for 10 minutes at room temperature.
4. Briefly vortex the tube and then do a quick spin (less than 5000xg) to concentrate the liquid at the bottom.
5. Store the suspended plasmid at -20°C. The DNA is stable for at least one year from date of shipping when stored at -20°C.

**RefSeq:** [NM\\_145720.4](#)

**RefSeq Size:** 2472 bp

**RefSeq ORF:** 1539 bp

**Locus ID:** 201798

**UniProt ID:** [Q8IY51](#)

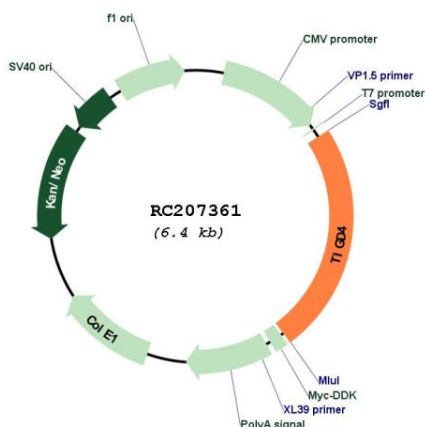
**Cytogenetics:** 4q31.3

**Protein Families:** Transcription Factors

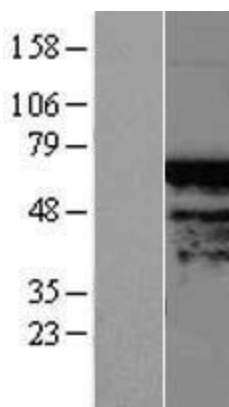
**MW:** 57.5 kDa

**Gene Summary:** The protein encoded by this gene belongs to the tigger subfamily of the pogo superfamily of DNA-mediated transposons in humans. These proteins are related to DNA transposons found in fungi and nematodes, and more distantly to the Tc1 and mariner transposases. They are also very similar to the major mammalian centromere protein B. The exact function of this gene is not known. [provided by RefSeq, Jul 2008]

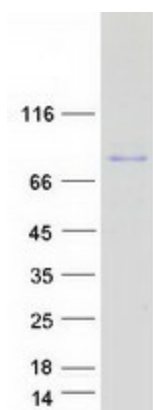
**Product images:**



Circular map for RC207361



Western blot validation of overexpression lysate (Cat# [LY407908]) using anti-DDK antibody (Cat# [TA50011-100]). Left: Cell lysates from untransfected HEK293T cells; Right: Cell lysates from HEK293T cells transfected with RC207361 using transfection reagent MegaTran 2.0 (Cat# [TT210002]).



Coomassie blue staining of purified TIGD4 protein (Cat# [TP307361]). The protein was produced from HEK293T cells transfected with TIGD4 cDNA clone (Cat# RC207361) using MegaTran 2.0 (Cat# [TT210002]).