

## Product datasheet for **RC207354**

### **PABP (PABPC1) (NM\_002568) Human Tagged ORF Clone**

#### **Product data:**

Product Type:	Expression Plasmids
Product Name:	PABP (PABPC1) (NM_002568) Human Tagged ORF Clone
Tag:	Myc-DDK
Symbol:	PABP
Synonyms:	PAB1; PABP; PABP1; PABPC2; PABPL1
Mammalian Cell Selection:	Neomycin
Vector:	pCMV6-Entry (PS100001)
E. coli Selection:	Kanamycin (25 ug/mL)



[View online »](#)

**ORF Nucleotide Sequence:**

&gt;RC207354 representing NM\_002568.

Blue=ORF Red=Cloning site Green=Tag(s)

```

GCTCGTTTAGTGAACCGTCAGAATTTTGTAAACGACTCACTATAGGGCGGCCGGGAATTCGTGACTG
GATCCGGTACCGAGGAGATCTGCCGCCGCGATCGCC
ATGAACCCAGTGCACCCAGCTACCCCATGGCCTCGCTCTACGTGGGGGACCTCCACCCCGACGTGACC
GAGGCGATGCTCTACGAGAAGTTCAGCCCGGGCCCATCCTCTCCATCCGGGTCTGCAGGGACATG
ATCACCCGCGCTCCTTGGGCTACGCGTATGTGAACCTCCAGCAGCCGGCGGACGCGGAGCGTGCTTTG
GACACCATGAATTTTGTGTTATAAAGGCAAGCCAGTACGCATCATGTGGTCTCAGCGTATCCATCA
CTTCGAAAAGTGGAGTAGGCAACATATTCATTAATAAATCTGGACAAATCCATTGATAATAAAGCACTG
TATGATACATTTTCTGCTTTTGGTAACATCCTTTCATGTAAGGTGGTTTGTGATGAAAAATGGTTCCAAG
GGCTATGGATTTGTACACTTTGAGACGCAGGAAGCAGCTGAAAGAGCTATTGAAAAAATGAATGGAATG
CTCCTAAATGATCGCAAAGTATTTGTTGGACGATTTAAGTCTCGTAAAGAACGAGAAGCTGAACTTGGGA
GCTAGGGCAAAGAATTCACCAATGTTTACATCAAGAATTTTGGAGAAGACATGGATGATGAGCGCCTT
AAGGATCTCTTTGGCAAGTTTGGCCTGCCTTAAGTGTGAAAGTAACTGACTGATGAAAGTGGAAAAATCC
AAAGGATTTGGATTTGTAAAGCTTTGAAAGGCATGAAGATGCACAGAAAGCTGTGGATGAGATGAACGGGA
AAGGAGCTCAATGAAAAACAATTTATGTTGGTGGAGCTCAGAAAAAGGTGGAACGGCAGACGGAACCTT
AAGCGCAAATTTGAACAGATGAAACAAGATAGGATCACCAGATACCAGGGTGTAAATCTTTATGTGAAA
AATCTTGATGATGGTATTGATGATGAACGCTCCGGAAAGAGTTTTCTCCATTTGGTACAATCACTAGT
GCAAAGTTATGATGGAGGGTGGTGCAGCAAAGGGTTTTGGTTTTGTATGTTTCTCCTCCCAGAAGAA
GCCACTAAAGCAGTTACAGAAAAGAACGGTAGAATTGTGGCCACAAGCCATTGTATGTAGCTTTAGCT
CAGCGCAAAGAAGAGCGCCAGGCTCACCTCACTAACCAGTATATGCAGAGAATGGCAAGTACGAGCT
GTTCCCAACCCTGTAATCAACCCTACCAGCAGCACCTCCTTCAGGTTACTTCATGGCAGTATCCCA
CAGACTCAGAACCCTGCTGCATACTATCTCCTAGCCTAATGCTCAACTAAGACCAAGTCTCGCTGG
ACTGCTCAGGGTCCAGACCTCATCCATTCAAAAATATGCCCGGTGCTATCCGCCAGCTGCTCCTAGA
CCACCATTTAGTACTATGAGACCAGCTTCTTACAGGTTCCACGAGTCATGTCAACACAGCGTGTGCT
AACACATCAACACAGACAATGGGTCCACGCTCCTGCAGCTGCAGCCGCTGCAGCTACTCCTGCTGCCGC
ACCGTTCCACAGTATAAATATGCTGCAGGATTCGCAATCCTCAGCAACATCTTAATGCACAGCCACAA
GTTACAATGCAACAGCCTGCTGTTTATGTAACAAGGTCAGGAACCTTTGACTGCTCCATGTTGGCATCT
GCCCTCCTCAAGAGCAAAGCAAATGTTGGGTGAACGGCTGTTTCTCTATTCAAGCCATGCACCCT
ACTCTTGCTGGTAAAATCACTGGCATGTTGTTGGAGATTGATAATTCAGAACTTCTTCATATGCTCGAG
TCTCCAGAGTCACTCCGTTCTAAGGTTGATGAAGCTGTAGCTGTACTACAAGCCACCAAGCTAAAGAG
GCTGCCAGAAAGCAGTTAACAGTGCCACCGGTGTTCCAAGTGT
AGCGGACCGACGCGTACGCGGCCGCTCGAGCAGAACTCATCTCAGAAAGAGGATCTGGCAGCAAATGAT
ATCCTGGATTACAAGGATGACGACGATAAGGTTTAA
  
```

**Protein Sequence:**

&gt;Peptide sequence encoded by RC207354

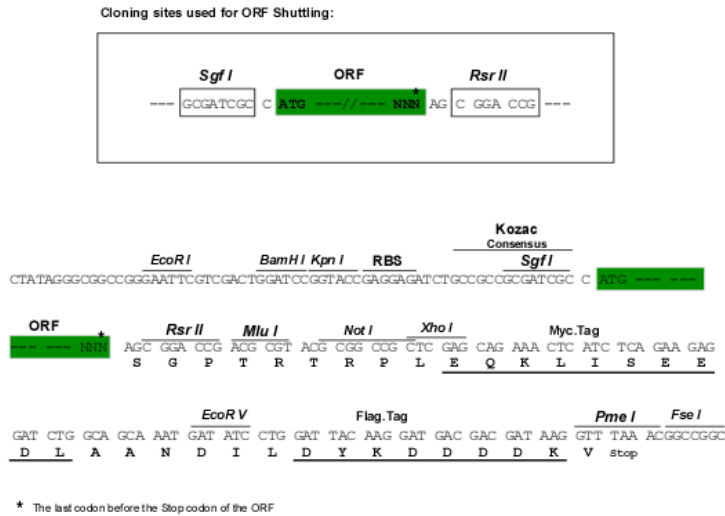
Blue=ORF Red=Cloning site Green=Tag(s)

```

MNPSAPSYPMASLYVGDLPDVTEAMLYEKFSAPGPILSIRVCRDMITRRSLGYAYVNFQQPADAERAL
DTMNFVDVIKGPVIRIMWSQRDPSLRKSGVGNIFIKNLKSIDNKALYDTFSAFGNILSCKVVCDENGSK
GYGFVHFETQEAERAIEKMNGMLLNDKRVFVGRFKSRKEREAEELGARAKEFTNVYIKNFGEDMDDERL
KDLFGKFGPALSVKVMTDESGKSGFGFVSFERHEDAQKAVDEMNGKELNGKQIYVGRAQKQKVERQTEL
KRKFEQMKQDRI TRYQGVNLVYKNLDDGIDDERLRKEFSFGTITSKVMMEGGRSKGFGFVCFSSPEE
ATKAVTEMNGRIVATKPLYVALAQRKEERQHL TNQYMQRMASVRAVNPV INPYQPAPPSGYFMAAIP
QTQNRAAYPPSQIAQLRPSRWTAQGARPHFQNMPGAIRPAAPRPPFSTMRPASSQVPRVMSTQRVA
NTSTQTMGPRPAAAAAATPAVRTVPQYKYAAGVRNPQQHLNAQPQVMTQQPAVHVQGEPLTASMLAS
APPQEQQMLGERLFPLIQAMHPTLAGKITGMLEIDNSELLHMLESPESLSKVD EAVAVLQAHQAKE
AAQKAVNSATGVPTV
SGPTRRTRPLEQKLI SEEDLAANDILDYKDDDDKV
  
```

 Recombinant protein using RC207354 also available, [TP307354](#)

**Chromatograms:** [https://cdn.origene.com/chromatograms/mg4037\\_c01.zip](https://cdn.origene.com/chromatograms/mg4037_c01.zip)  
**Restriction Sites:** SgfI-RsrII  
**Cloning Scheme:**



**ACCN:** NM\_002568

**ORF Size:** 1908 bp

**OTI Disclaimer:** The molecular sequence of this clone aligns with the gene accession number as a point of reference only. However, individual transcript sequences of the same gene can differ through naturally occurring variations (e.g. polymorphisms), each with its own valid existence. This clone is substantially in agreement with the reference, but a complete review of all prevailing variants is recommended prior to use. [More info](#)

**OTI Annotation:** This clone was engineered to express the complete ORF with an expression tag. Expression varies depending on the nature of the gene.

**Components:** The ORF clone is ion-exchange column purified and shipped in a 2D barcoded Matrix tube containing 10ug of transfection-ready, dried plasmid DNA (reconstitute with 100 ul of water).

**Reconstitution Method:**

1. Centrifuge at 5,000xg for 5min.
2. Carefully open the tube and add 100ul of sterile water to dissolve the DNA.
3. Close the tube and incubate for 10 minutes at room temperature.
4. Briefly vortex the tube and then do a quick spin (less than 5000xg) to concentrate the liquid at the bottom.
5. Store the suspended plasmid at -20°C. The DNA is stable for at least one year from date of shipping when stored at -20°C.

**Note:** Plasmids are not sterile. For experiments where strict sterility is required, filtration with 0.22um filter is required.

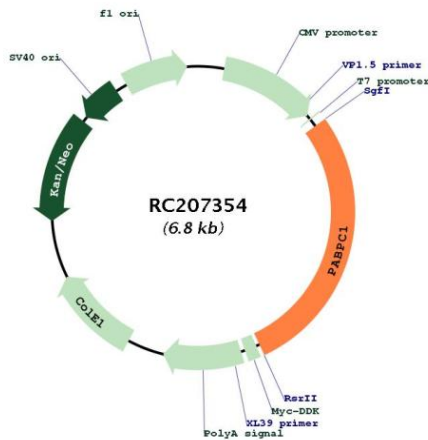
**RefSeq:** [NM\\_002568.4](#)

**RefSeq Size:** 2869 bp

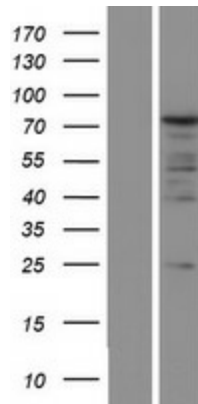
RefSeq ORF: 1911 bp  
 Locus ID: 26986  
 UniProt ID: [P11940](#)  
 Cytogenetics: 8q22.3  
 Domains: RRM, PABP, RRM\_1  
 MW: 70.7 kDa

**Gene Summary:** This gene encodes a poly(A) binding protein. The protein shuttles between the nucleus and cytoplasm and binds to the 3' poly(A) tail of eukaryotic messenger RNAs via RNA-recognition motifs. The binding of this protein to poly(A) promotes ribosome recruitment and translation initiation; it is also required for poly(A) shortening which is the first step in mRNA decay. The gene is part of a small gene family including three protein-coding genes and several pseudogenes.[provided by RefSeq, Aug 2010]

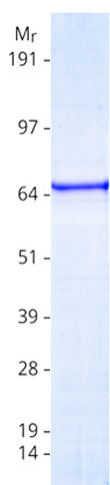
### Product images:



Circular map for RC207354



Western blot validation of overexpression lysate (Cat# [LY419240]) using anti-DDK antibody (Cat# [TA50011-100]). Left: Cell lysates from untransfected HEK293T cells; Right: Cell lysates from HEK293T cells transfected with RC207354 using transfection reagent MegaTran 2.0 (Cat# [TT210002]).



Coomassie blue staining of purified PABPC1 protein (Cat# [TP307354]). The protein was produced from HEK293T cells transfected with PABPC1 cDNA clone (Cat# RC207354) using MegaTran 2.0 (Cat# [TT210002]).