

Product datasheet for **RC207353**

KCND1 (NM_004979) Human Tagged ORF Clone

Product data:

Product Type:	Expression Plasmids
Product Name:	KCND1 (NM_004979) Human Tagged ORF Clone
Tag:	Myc-DDK
Symbol:	KCND1
Synonyms:	KV4.1
Vector:	pCMV6-Entry (PS100001)
E. coli Selection:	Kanamycin (25 ug/mL)
Cell Selection:	Neomycin



[View online »](#)

ORF Nucleotide
Sequence:

>RC207353 ORF sequence
Red=Cloning site Blue=ORF Green=Tags(s)

TTTTGTAATACGACTCACTATAGGGCGGCCGGAATTCGTCGACTGGATCCGGTACCGAGGAGATCTGCC
GCCGCGATCGCC

ATGGCGCAGGCCTGGCCACGTGGCTGCCTTTTGTCTCGGCAGCAGCAGTGGGCTGGCTGCCCTGGCCC
AGCAACCCTGCCCCGGCACCGGGGTGAAGGCATCTCGAGGAGATGAGGTTCTGGTGGTGAACGTGAG
CGGACGGCGCTTTGAGACTTGAAGAATACGCTGGACCGCTACCCAGACACCTTGTGGGAGCTCGGAG
AAGGAATCTTCTACGATGCTGACTCAGGCGAGTACTTCTTCGATCGCGACCCTGACATGTTCCGCCATG
TGCTGAACTTCTACCGAACGGGGCGGCTGCATTGCCACGGCAGGAGTGCATCCAGGCCTTCGACGAAGA
GCTGGCTTTCTACGGCCTGGTCCCGAGCTAGTCGGTACTGCTGCCTTGAAGAGTATCGGGACCGAAAAG
AAGGAGAATGCCGAGCGCCTGGCAGAGGATGAGGAGGCAGAGCAGGCCGGGGACGGCCAGCCCTGCCAG
CAGGCAGCTCCCTGCGGCAGCGGCTCTGGCGGGCCTTCGAGAATCCACACAGGACCGCAGCCCTCGT
TTTCTACTATGTGACCGGCTTTCATCGCCGTGTCGGTTCATCGCAATGTGGTGGAGACCATCCCATGC
CGCGGCTCTGCACGCAGTCTCAAGGGAGCAGCCCTGTGGCGAACGCTTCCACAGGCCTTTTTCTGCA
TGGACACAGCCTGTGACTCATATTCACAGGTGAATACCTCCTGCGGCTGTTTGGCCGCCAGCCGTTG
CCGCTTCTCGGAGTGTATGAGCCTCATCGAGTGGTGGCCATCCTGCCCTACTACATTGGGCTTTTG
GTGCCAAGAACGACGATGTCTCTGGCGCCTTGTCCACCTGCGTGTGTTCCGGGTGTTTCGCATTTCA
AGTTCTCCAGGCACTCACAGGGCTTGAGGATTCTGGGTACACACTCAAGAGCTGTGCCTCTGAGCTGGG
CTTTCTCCTCTTTCCCTAACCATGGCCATCATCATCTTGGCACTGTGATGTTTATGCTGAGAAGGGC
ACAAACAAGACCAACTTTACAAGCATCCCTGCGGCCTTCTGGTATACCATTGTCACCATGACCACGCTTG
GCTACGGAGACATGGTGGCCAGCACCATTTGCTGGCAAGATTTTCGGGTCCATCTGCTCACTCAGTGGCGT
CTTGGTCATTGCCCTGCCTGTGCCAGTCATTGTGTCCTCAACTTTAGCCGCATCTACCACCAGAACCAGCGG
GCTGACAAGCGCCGAGCACAGCAGAAGGTGCGCTTGGCAAGGATCCGATTGGCAAAGAGTGTACCACCA
ATGCCTTCTGTCAGTACAAGCAGAATGGGGCCTTGAGGACAGCGGCAGTGGCGAGGAACAGGCTTTTG
TGTGAGGAACCGTTCTGCCTTTGAACAGCAACATCACCCTTGTGCACTGTCTAGAGAAGACAACGTGC
CATGAGTTCACAGATGAGCTCACCTTCAGTGAAGCCCTGGGAGCCGTCTCGCCGGGTGGCCGCACCAGCC
GTAGCACCTCTGTGCTTCCAGCCAGTGGGACCCGGAAGCCTGCTGTCTTCTTGTGCCCTCGCAGGGC
CAAGCGCCGCGCCATCCGCTTGGCAACTCCACTGCCTCAGTCAGCCGTGGCAGCATGCAGGAGCTGGAC
ATGCTGGCAGGGCTGCGCAGGAGCCATGCCCTCAGAGCCGCTCCAGCCTCAATGCCAAGCCCCATGACA
GCCTTGACCTGAACTGCGACAGCCGGGACTTCGTGGCTGCCATTATCAGCATCCCTACCCCTCCTGCCAA
CACCCAGATGAGAGCCAACCTTCTCCCTGGCGGCGGTGGCAGGGCCGGCAGCACCCCTCAGGAACTCC
AGCCTGGTACCCTTGCTCTTCCCGAGACTGTCAAGATCTCATCCCTG

ACGCGTACGCGGCCGCTCGAGCAGAACTCATCTCAGAAGAGGATCTGGCAGCAATGATATCCTGGATT
ACAAGGATGACGACGATAAGGTTTAA

Protein Sequence: >RC207353 protein sequence
Red=Cloning site Green=Tags(s)

```

MAAGLATWLPFARAAAVGWLPLAQQPLPPAPGVKASRGDEVLVVNVSGRRFETWKNTLD RYPTDLLGSSE
KEFFYDADSGEYFFDRDPDMFRHVLNFYRTGRLHCPRQECIQAFDEELAFYGLVPELVGDCCL E EYRDRK
KENAERLAEDEEAEQAGDGPALPAGSSLRQLWRAFENPHTSTAALVFYVVTGFFIAVSVIANV VETIPC
RGSARRSSREQPCGERFPQAFFCMTACVLI FTGEYLLRLFAAPSRRCFLRSVMSLIDVVAI LPYYIGLL
VPKNDVSGAFVTLRVFRVFRIFKFSRHSQGLRILGYTLKSCASELGFLLSLTM AIIIFATVMFYAEKG
TNKTNFTSIPAAFWYTI VMTTLGYGDMVPSTIAGKIFGSICSLSGVLVIALPVPVIVSNF SRIYHQNR
ADKRRRAQQK VRLARIRLAKSGTTNAFLQYKQNGGLEDSGSGEEQALCVRNRSAFEQ QHHLLHCLEKTT C
HEFTDELTFSEALGAVSPGGRTSRSTSVSSQPVGPGSLLSSCCPRRAKRRAIRLANSTASVSRG SMQELD
MLAGLRRSHAPQSRSSLNAKPHDSL DLNCD SRDFVA AIIISIPTPPANTPDESQPS SPGGGGRAGSTLRNS
SLGTPCLFPETVKISSL
  
```

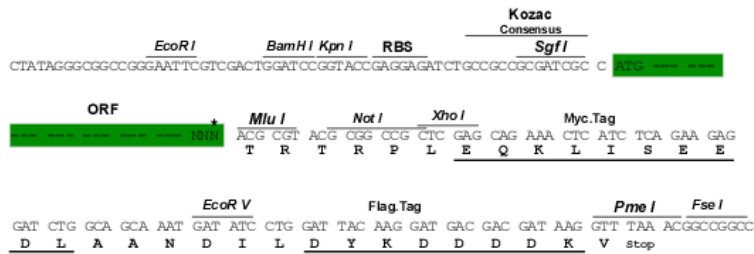
TRTRPLEQKLISEEDLAANDILDYKDDDDKV

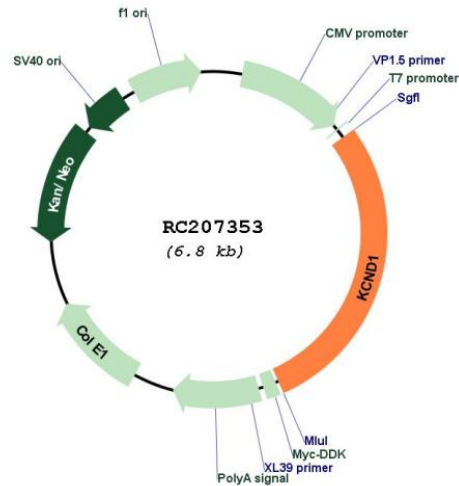
Chromatograms: https://cdn.origene.com/chromatograms/mk6134_a07.zip

Restriction Sites: Sgfl-MluI

Cloning Scheme:

Cloning sites used for ORF Shuttling:



Plasmid Map:


ACCN: NM_004979

ORF Size: 1941 bp

OTI Disclaimer: The molecular sequence of this clone aligns with the gene accession number as a point of reference only. However, individual transcript sequences of the same gene can differ through naturally occurring variations (e.g. polymorphisms), each with its own valid existence. This clone is substantially in agreement with the reference, but a complete review of all prevailing variants is recommended prior to use. [More info](#)

OTI Annotation: This clone was engineered to express the complete ORF with an expression tag. Expression varies depending on the nature of the gene.

Components: The ORF clone is ion-exchange column purified and shipped in a 2D barcoded Matrix tube containing 10ug of transfection-ready, dried plasmid DNA (reconstitute with 100 ul of water).

Reconstitution Method:

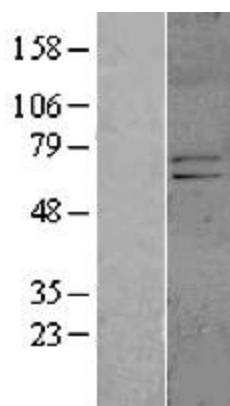
1. Centrifuge at 5,000xg for 5min.
2. Carefully open the tube and add 100ul of sterile water to dissolve the DNA.
3. Close the tube and incubate for 10 minutes at room temperature.
4. Briefly vortex the tube and then do a quick spin (less than 5000xg) to concentrate the liquid at the bottom.
5. Store the suspended plasmid at -20°C. The DNA is stable for at least one year from date of shipping when stored at -20°C.

RefSeq: [NM_004979.4](#), [NP_004970.3](#)

RefSeq Size: 4720 bp

RefSeq ORF:	1944 bp
Locus ID:	3750
UniProt ID:	Q9NSA2
Cytogenetics:	Xp11.23
Protein Families:	Druggable Genome, Ion Channels: Potassium, Transmembrane
MW:	71.3 kDa
Gene Summary:	This gene encodes a multipass membrane protein that comprises the pore subunit of the voltage-gated A-type potassium channel, which functions in the repolarization of membrane action potentials. Activity of voltage-gated potassium channels is important in a number of physiological processes, among them the regulation of neurotransmitter release, heart rate, insulin secretion, and smooth muscle contraction. [provided by RefSeq, Aug 2013]

Product images:



Western blot validation of overexpression lysate (Cat# [LY401548]) using anti-DDK antibody (Cat# [TA50011-100]). Left: Cell lysates from untransfected HEK293T cells; Right: Cell lysates from HEK293T cells transfected with RC207353 using transfection reagent MegaTran 2.0 (Cat# [TT210002]).