

Product datasheet for **RC207344**

JPT1 (NM_001002033) Human Tagged ORF Clone

Product data:

Product Type: Expression Plasmids
Product Name: JPT1 (NM_001002033) Human Tagged ORF Clone
Tag: Myc-DDK
Symbol: JPT1
Synonyms: ARM2; HN1; HN1A
Mammalian Cell Selection: Neomycin
Vector: pCMV6-Entry (PS100001)
E. coli Selection: Kanamycin (25 ug/mL)
ORF Nucleotide Sequence: >RC207344 ORF sequence
Red=Cloning site Blue=ORF Green=Tags(s)

TTTTGTAATACGACTCACTATAGGGCGGCCGGAATTCGTCGACTGGATCCGGTACCGAGGAGATCTGCC
GCC**CGATCGCC**

ATGGCCTCTAATATCTTTGGGACACCTGAAGAAAATCAAGCTTCTTGGCCAAGTCAGCAGGTGCCAAGT
CTAGTGGTGGCAGGAAGACTTGGAGTCATCTGGACTGCAGAGAAGAACTCCTCTGAAGCAAGCTCCGG
AGACTTCTTAGATCTGAAGGGAGAAGGTGATATTCATGAAAATGTGGACACAGACTTGCCAGGCAGCCTG
GGCAGAGTGAAGAGAAGCCCGTGCCTGCTGCGCCTGTGCCAGCCCGGTGGCCCGGCCCAAGTCCAT
CCAGAAGAAATCCCCCTGGCGCAAGTCCAGCCTCGTCTTGGGT

ACGCGTACGCGGCCGCTCGAGCAGAAACTCATCTCAGAAGAGGATCTGGCAGCAAATGATATCCTGGATT
ACAAGGATGACGACGATAAGGTTTAA

Protein Sequence: >RC207344 protein sequence
Red=Cloning site Green=Tags(s)
MASNIFGTPEENQASWAKSAGAKSSGGREDLESSGLQRRNSSEASSGDFLDLKGEGDIHENVDLPGSL
GQSEKPVPAAPVPSVAPAPVPSRRNPPGGKSSLVLG

TRTRPLEQKLISEEDLAANDILDYKDDDDKV

Chromatograms: https://cdn.origene.com/chromatograms/mk6381_b09.zip

Restriction Sites: SgfI-MluI



[View online »](#)

Cloning Scheme:


ACCN: NM_001002033

ORF Size: 324 bp

OTI Disclaimer: The molecular sequence of this clone aligns with the gene accession number as a point of reference only. However, individual transcript sequences of the same gene can differ through naturally occurring variations (e.g. polymorphisms), each with its own valid existence. This clone is substantially in agreement with the reference, but a complete review of all prevailing variants is recommended prior to use. [More info](#)

OTI Annotation: This clone was engineered to express the complete ORF with an expression tag. Expression varies depending on the nature of the gene.

Components: The ORF clone is ion-exchange column purified and shipped in a 2D barcoded Matrix tube containing 10ug of transfection-ready, dried plasmid DNA (reconstitute with 100 ul of water).

- Reconstitution Method:**
1. Centrifuge at 5,000xg for 5min.
 2. Carefully open the tube and add 100ul of sterile water to dissolve the DNA.
 3. Close the tube and incubate for 10 minutes at room temperature.
 4. Briefly vortex the tube and then do a quick spin (less than 5000xg) to concentrate the liquid at the bottom.
 5. Store the suspended plasmid at -20°C. The DNA is stable for at least one year from date of shipping when stored at -20°C.

RefSeq: [NM_001002033.3](#)

RefSeq Size: 1705 bp

RefSeq ORF: 327 bp

Locus ID: 51155

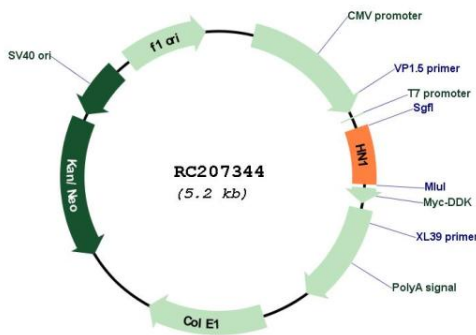
UniProt ID: [Q9UK76](#)

Cytogenetics: 17q25.1

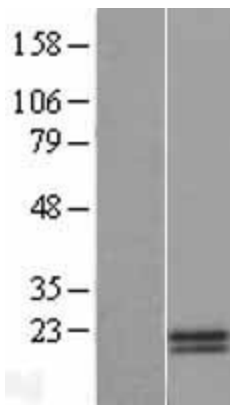
MW: 11 kDa

Gene Summary: Modulates negatively AKT-mediated GSK3B signaling (PubMed:21323578, PubMed:22155408). Induces CTNNB1 'Ser-33' phosphorylation and degradation through the suppression of the inhibitory 'Ser-9' phosphorylation of GSK3B, which represses the function of the APC:CTNNB1:GSK3B complex and the interaction with CDH1/E-cadherin in adherent junctions (PubMed:25169422). Plays a role in the regulation of cell cycle and cell adhesion (PubMed:25169422, PubMed:25450365). Has an inhibitory role on AR-signaling pathway through the induction of receptor proteosomal degradation (PubMed:22155408). [UniProtKB/Swiss-Prot Function]

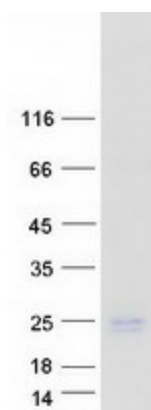
Product images:



Circular map for RC207344



Western blot validation of overexpression lysate (Cat# [LY424172]) using anti-DDK antibody (Cat# [TA50011-100]). Left: Cell lysates from untransfected HEK293T cells; Right: Cell lysates from HEK293T cells transfected with RC207344 using transfection reagent MegaTran 2.0 (Cat# [TT210002]).



Coomassie blue staining of purified JPT1 protein (Cat# [TP307344]). The protein was produced from HEK293T cells transfected with JPT1 cDNA clone (Cat# RC207344) using MegaTran 2.0 (Cat# [TT210002]).