

Product datasheet for **RC207338**

ZNF8 (NM_021089) Human Tagged ORF Clone

Product data:

Product Type:	Expression Plasmids
Product Name:	ZNF8 (NM_021089) Human Tagged ORF Clone
Tag:	Myc-DDK
Symbol:	ZNF8
Synonyms:	HF.18; Zfp128
Mammalian Cell Selection:	Neomycin
Vector:	pCMV6-Entry (PS100001)
E. coli Selection:	Kanamycin (25 ug/mL)



[View online »](#)

ORF Nucleotide Sequence:

>RC207338 ORF sequence
 Red=Cloning site Blue=ORF Green=Tags(s)

TTTTGTAATACGACTCACTATAGGGCGGCCGGGAATTCGTCGACTGGATCCGGTACCGAGGAGATCTGCC
 GCC**CGGATCGCC**

ATGGACCCGAGGACGAAGGGTAGCGGGAGTGATGTCTGTGGGGCCCGCGGCCGGCTTCAGGAAC
 CAGTGACCTTCCGGGATGTGGCTGTGGACTTTACCCAGGAGGAATGGGGGCAGCTGGACCTACCCAGAG
 GATCCTCTACCGTGACGTGATGTGGAGACCTTTGGTCACCTGCTCTCCATAGGTCTGAGCTTCCGAAG
 CCTGAAGTCATCTCCAGCTGGAGCAAGGGACCGAGCTATGGGTGGCTGAGAGAGGAACCCAGGGCT
 GCCATCCAGCCTGGGAGCCTCGATCTGAAAGCCAAGCATCACGCAAGGAAGAGGGCTGCCTGAAGAGGA
 GCCATCCCATGTCACGGGAAGGAAGGATTCCCGACAGATGCTCCTTATCCACCACGTTAGGGAAAGAC
 AGGGAGTGTGAGCCAGAGTCTGGCACTCAAGGAGCAGAATAACTTGAAGCAGTTGGAATTTGGCCTCA
 AGGAAGCACCAGTTCAAGATCAAGGCTACAAACTCTCAGACTCAGGGAAAACGCGTCTGAGTTCAAG
 CCCAAATCCATCCAGAGATCTCTAGAGGGGAGTATTTGTATACTTACGACTCACAGATTACAGACTCA
 GAACATAACTCCAGCTTAGTCAGTCAGCAGACAGGCTCCCGAGGAAAACAGCCCGGTGAAAACAGTGACT
 GTCACAGAGATCCAGTCAGGCCATTCCAATTACGGAACCTCACAAAAGCCAGGTGCAGGACAAAACCTA
 CAAATGTACTGACTGTGGGAAGTCGTTTAAACATAACGCACACCTCACCGTGCACAAGAGGATTCATACG
 GGAGAAAGACCTTATATGTGCAAGGAGTGTGGAAAGCCTTCAGCCAGAACTCCTCCCTCGTCCAGCATG
 AGCGCATCCACTGGAGACAAGCCCTACAAGTGTGCCGAATGTGGGAAGTCTTCTGCCATAGTACACA
 CCTTACCGTCCATCGGAGGATTCACACTGGGGAGAAGCCCTATGAGTGTGAGGACTGTGGGAGGGCCTTC
 AACCGAAGTCTCCCTGGGGCGGCACAAGAGGACACACACTGGGGAGAAGCCATACACCTGCAGTGTGT
 GTGGGAAATCCTTCTCTCGGACCACTTGCCCTTTCTGCACTGAGAACTCACACCGAGGAGGCCCTTA
 CGAGTGTAAACCACTGCGGGAAGGGCTTCAGGCACAGCTCATCCCTGGCCAGCACCAGCGGAAGCAGCG
 GGGGAGAAGCCCTTGTAGTGCCGCCAGAGGCTGATCTTTGAGCAGACGCCAGCTCTCACAAAGCATGAAT
 GGACAGAAGCCCTGGGCTGTGACCCACCTTTGAGTCAAGATGAGAGGACTCACCGAAGCGACAGACCCTT
 CAAATGTAATCAGTGTGGGAAGTGTTCATTAGAGCTCTCACCTCATCCGGCACCAGATAAATCACACC
 AGAGAGGAGCAGCCCATGGGCGAAGCCGGCGGCTGAACAGTCTCGAGCAGGAACTCACACCTGGTTC
 AGCATCAACACCCGAATCCAGAAAGAGCTCTGCAGGCGGAGCAAAGGCAGGGCAGCCGAAAGCAGAGC
 CCTGGCTTTGTTGACATCCAAAAATCATGCAAGAGAAAAACCTGTGCACGTTATTGGGTGGAAGAG
 CCTTCTGTGGGTCTTCCATGTTATTTGACATCAGAGAATCCACA

ACGCGTACGCGGCCGCTCGAGCAGAAACTCATCTCAGAAGAGGATCTGGCAGCAAATGATATCCTGGATT
 ACAAGGATGACGACGATAAGGTTTAA

Protein Sequence:

>RC207338 protein sequence
 Red=Cloning site Green=Tags(s)

MDPEDEGVAGVMSVGPAAARLQEPVTFRDVAVDFTQEEWGQLDPTQRILYRDVMLETFGHLLSIGPELPK
 PEVISQLEQGTELWVAERGTTQGCHPAWEPRSESQASRKEEGLPEEESHVTVGREGFPTDAPYPTTLGKD
 RECQSQSLALKEQNLLKLEFLKEAPVQDQGYKTLRLRENCVLS SSPNPFPEISRGEYLTYDYSQITDS
 EHNSSLVSQQTGSPGKQPGENSCHRDSQAIPITELTKSQVQDKPYKCTDCGKSFNHNHLTVHKRIHT
 GERPYMCKEKGAFSQNSSLVQHERIHTGDKPYKCAECGKSFCHSTHLTVHRIHTGEKPYECQDCGRAF
 NQNSSLGRHKRHTGKPYTCSVCGKSFRTTCLFLHLRTHTEERPYECHGKGFRRHSSSLAQHQKHA
 GEKPFECRQRLIFEQTPALTKHEWTEALGCDPPLSQDERTHRSDRPFKCNQCGKCFIQSSHLIRHQITHT
 REEQPHGRSRRREQSSRNHSLVQHHPNSRKSSAGGAKAGQPESRALALFDIQIMQEKNPVHVI GVEE
 PSVGASMLFDIREST

TRTRPLEQKLISEEDLAANDILDYKDDDDKV

Chromatograms:

https://cdn.origene.com/chromatograms/mk6339_g02.zip

Restriction Sites:

Sgfl-Mlul

Cloning Scheme:


ACCN: NM_021089

ORF Size: 1725 bp

OTI Disclaimer: The molecular sequence of this clone aligns with the gene accession number as a point of reference only. However, individual transcript sequences of the same gene can differ through naturally occurring variations (e.g. polymorphisms), each with its own valid existence. This clone is substantially in agreement with the reference, but a complete review of all prevailing variants is recommended prior to use. [More info](#)

OTI Annotation: This clone was engineered to express the complete ORF with an expression tag. Expression varies depending on the nature of the gene.

Components: The ORF clone is ion-exchange column purified and shipped in a 2D barcoded Matrix tube containing 10ug of transfection-ready, dried plasmid DNA (reconstitute with 100 ul of water).

Reconstitution Method:

1. Centrifuge at 5,000xg for 5min.
2. Carefully open the tube and add 100ul of sterile water to dissolve the DNA.
3. Close the tube and incubate for 10 minutes at room temperature.
4. Briefly vortex the tube and then do a quick spin (less than 5000xg) to concentrate the liquid at the bottom.
5. Store the suspended plasmid at -20°C. The DNA is stable for at least one year from date of shipping when stored at -20°C.

RefSeq: [NM_021089.3](#)

RefSeq Size: 2210 bp

RefSeq ORF: 1728 bp

Locus ID: 7554

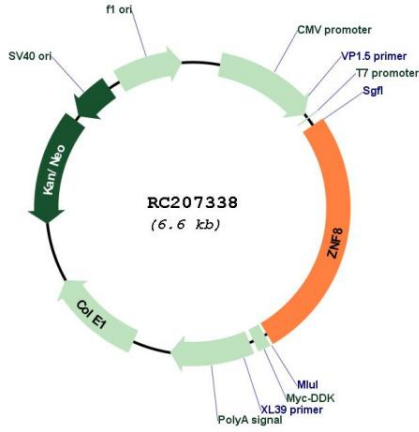
UniProt ID: [P17098](#)

Cytogenetics: 19q13.43

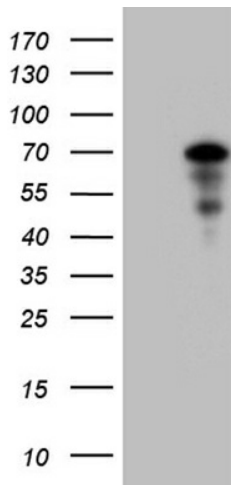
MW: 65 kDa

Gene Summary: Transcriptional repressor. May modulate BMP and TGF-beta signal transduction, through its interaction with SMAD proteins.[UniProtKB/Swiss-Prot Function]

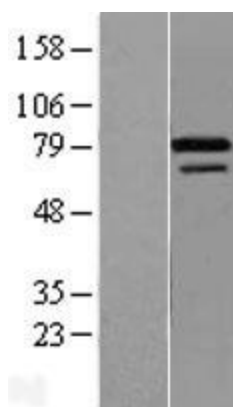
Product images:



Circular map for RC207338



HEK293T cells were transfected with the pCMV6-ENTRY control (Cat# [PS100001], Left lane) or pCMV6-ENTRY ZNF8 (Cat# RC207338, Right lane) cDNA for 48 hrs and lysed. Equivalent amounts of cell lysates (5 ug per lane) were separated by SDS-PAGE and immunoblotted with anti-ZNF8 (Cat# [TA811989]). Positive lysates [LY412094] (100ug) and [LC412094] (20ug) can be purchased separately from OriGene.



Western blot validation of overexpression lysate (Cat# [LY412094]) using anti-DDK antibody (Cat# [TA50011-100]). Left: Cell lysates from untransfected HEK293T cells; Right: Cell lysates from HEK293T cells transfected with RC207338 using transfection reagent MegaTran 2.0 (Cat# [TT210002]).