

Product datasheet for **RC207330**

C9orf96 (STKLD1) (NM_153710) Human Tagged ORF Clone

Product data:

Product Type:	Expression Plasmids
Product Name:	C9orf96 (STKLD1) (NM_153710) Human Tagged ORF Clone
Tag:	Myc-DDK
Symbol:	C9orf96
Synonyms:	C9orf96; SgK071; Sk521
Mammalian Cell Selection:	Neomycin
Vector:	pCMV6-Entry (PS100001)
E. coli Selection:	Kanamycin (25 ug/mL)



[View online »](#)

ORF Nucleotide
Sequence:

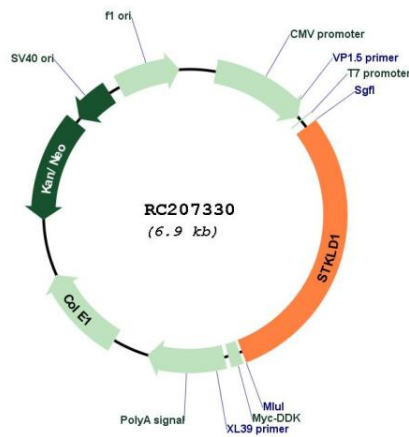
>RC207330 ORF sequence
Red=Cloning site Blue=ORF Green=Tags(s)

TTTTGTAATACGACTCACTATAGGGCGGCCGGAATTCGTCGACTGGATCCGGTACCGAGGAGATCTGCC
GCCCGCATCGCC

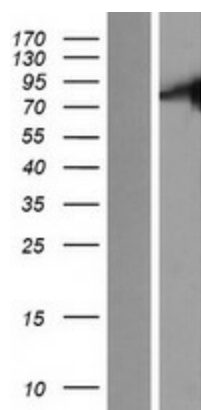
ATGCTTGGGCCAGGGTCCAATCGCAGGCGCCCCACGCAGGGGAGCGAGGCCAGGGTCCCCCGGAGAGC
CCATGGAGAAGTACCAGTTTTGTACCAGCTGAATCCTGGGGCCTTGGGGTGAACCTGGTGGTGGAGGA
AATGGAACCAAAGTCAAGCATGTGATAAAGCAGGTGGAATGCATGGATGACCATTACGCCAGTCAGGCC
CTGGAGGAGCTGATGCCACTGCTGAAGCTGCGGCACGCCACATCTCTGTGTACCAGGAGCTGTTTCATCA
CGTGGAATGGGGAGATCTTCTCTGTACCTCTGCCTGGTGGTGGAGTTCAATGAGCTCAGCTTCCAGGA
GGTCATTGAGGATAAGAGGAAGGCAAAGAAAATCATTGACTCTGAGTGGATGCAGAATGTGCTGGGCCAG
GTGCTGGACGCGTGAATACCTGCACCATTTGGACATCATCCACAGGAATCTCAAACCTCCAACATCA
TCCTCATCAGCAGTGACCACTGCAAACCTGCAGGACCTGAGTTCCAATGTGCTAATGACAGACAAAGCCAA
ATGGAATATTCGTGCGGAGGAAGACCCCTTTCGTAAGTCTGGATGGCCCTGAAGCCCTCAACTTCTCC
TTCAGCCAGAAATCAGACATCTGGTCCCTGGGCTGCATCATTCTGGACATGACCAGCTGCTCCTTATGG
ATGGCACAGAAGCCATGCATCTGCGGAAGTCCCTCCGCCAGAGCCAGGCAGCCTGAAGGCCGCTCCTGAA
GACAATGGAGGAGAAGCAGATCCCGGATGTGGAACCTTCAGGAATCTTCTGCCCTTGTGCTCCAGATC
GACCCCTCGGATCGAATAACGATAAAGGACGTGGTGCACATCACCTTCTTGTAGAGGCTCCTTCAAGTCTC
CGTGCGTCTCTGACCTGCACCGGCAGATGGTGCCTGCGTCCATCACCGACATGCTGTTAGAAGGCAA
CGTGGCCAGCATTTTAGAGGTGATGCAGAAATCTCTGGCTGGCCCGAAGTCCAGCTCAGGGCCATGAAG
AGGCTTCTGAAAATGCCTGCAGATCAGCTAGGTCTGCCGTGGCCCGGAGCTGGTGGAGGTGGTGGTCA
CGACCATGGAGCTACATGACAGGGTCTCGATGTCCAGCTGTGCTGCTCCCTGCTGCTGCACCTCCT
GGCCAAGCGCTGGTGCACCACCCGGAAGCCAAGGCTCCCTGCAACCAAGCCATCACCTCCACCCTGCTG
AGTGCTCTTACAGGCCACCCGAGGAGGACACTTCTTGTGATGGTCTACAGCCTGCTAGCCATACCA
CAACCCAGGAGTCAGAGTCACTGTGAGAGGAGCTGCAGAACGCTGGGCTGCTGGAGCACATCCTGGAGCA
CCTCAACAGCTCCCTCGAAAGCAGGGACGTCTGCGCCAGCGGCCTGGGCTGCTGCGCCCTCCTGCTG
GACGGTATCATTGTGAACAAGGCCCTTGGAGAAGTCCCGACCTCATCAGCCAGGTGTTGGCCACCT
ACCCTGCGGATGGGAAATGGCAGAAGCCAGCTGCGGAGTCTTCTGGCTGCTGCTCCTGCTGGGCTGCAT
CAAGGAGCAGCAGTTTGAACAAGTGGTGGCGCTGCTCCTGCAAAGCATCCGGCTGTGCCAGGACAGAGCC
CTGCTGGTGAACAATGCCTACCGGGGACTGGCCAGCCTGGTGAAGGTGTCAGAGCTGGCGGCTTCAAGG
TGGTGGTGCAGGAGGAGGCGGCAGTGGCTCAGCCTCATCAAGGAGACCTACCAGCTCCACAGGGACGA
CCCGGAGGTGGTGGAGAAGTGGGCATGCTGCTGGTCCACCTGGCTTCTATGAGGAGATCCTGCCGGAG
CTGGTGTCCAGTAGTATGAAGGCCCTGCTCCAGGAGATCAAGGAGCGCTTACCTCCAGCCTGGTGGTGG
ACAGCAGCGCCTTACGCAAACAGGCCTCCCTCCAGGTGGAAGCCCCAGCTGGGGTGCACCACGCTGG
GGGACTGGAA

ACGCGTACGCGGCCGCTCGAGCAGAACTCATCTCAGAAGAGGATCTGGCAGCAAATGATATCCTGGATT
ACAAGGATGACGACGATAAGGTTTAA

Components:	The ORF clone is ion-exchange column purified and shipped in a 2D barcoded Matrix tube containing 10ug of transfection-ready, dried plasmid DNA (reconstitute with 100 ul of water).
Reconstitution Method:	<ol style="list-style-type: none"> 1. Centrifuge at 5,000xg for 5min. 2. Carefully open the tube and add 100ul of sterile water to dissolve the DNA. 3. Close the tube and incubate for 10 minutes at room temperature. 4. Briefly vortex the tube and then do a quick spin (less than 5000xg) to concentrate the liquid at the bottom. 5. Store the suspended plasmid at -20°C. The DNA is stable for at least one year from date of shipping when stored at -20°C.
RefSeq:	<u>NM_153710.2</u>
RefSeq Size:	2794 bp
RefSeq ORF:	2043 bp
Locus ID:	169436
UniProt ID:	<u>Q8NE28</u>
Cytogenetics:	9q34.2
Protein Families:	Protein Kinase
MW:	75.7 kDa

Product images:


Circular map for RC207330



Western blot validation of overexpression lysate (Cat# [LY406976]) using anti-DDK antibody (Cat# [TA50011-100]). Left: Cell lysates from untransfected HEK293T cells; Right: Cell lysates from HEK293T cells transfected with RC207330 using transfection reagent MegaTran 2.0 (Cat# [TT210002]).