

Product datasheet for RC207328

SFRP1 (NM_003012) Human Tagged ORF Clone

Product data:

Product Type:	Expression Plasmids
Product Name:	SFRP1 (NM_003012) Human Tagged ORF Clone
Tag:	Myc-DDK
Symbol:	SFRP1
Synonyms:	FRP; FRP-1; FRP1; FrzA; SARP2
Mammalian Cell Selection:	Neomycin
Vector:	pCMV6-Entry (PS100001)
E. coli Selection:	Kanamycin (25 ug/mL)
ORF Nucleotide Sequence:	>RC207328 representing NM_003012 Red=Cloning site Blue=ORF Green=Tags(s)

TTTTGTAATACGACTCACTATAGGGCGGCCGGGAATTCGTCGACTGGATCCGGTACCGAGGAGATCTGCCGCCGCGATCGCC

ATGGGCATCGGGCGCAGCGAGGGGGGCCCGCGGGGCAGCCCTGGGCGTGCTGCTGGCGCTGGGCGCGGCGCTTCTGGCCGTGGGCTCGGCCAGCGAGTACGACTACGTGAGCTTCCAGTCGGACATCGGCCCGTACCA GAGCGGGCGCTTCTACACCAAGCCACCTCAGTGCCTGGACATCCCCGCGGACCTGCGGCTGTGCCACAAC GTGGGCTACAAGAAGATGGTGTGCCAACCTGTGGAGCACGAGACCATGGCGGAGGTGAAGCAGCAGG CCAGCAGCTGGGTGCCCTGCTCAACAAGAACTGCCACGCGGCACCCAGGTCTTCTCTGCTCGCTCTT CGCGCCGCTGCTGCTGGACCGGCCATCTACCCGTGTCGCTGGCTCTGCGAGGCGGTGCGCGACTCGTGC GAGCCGGTCATGCAGTTCTTCGGCTTCTACTGGCCCGAGATGCTTAAGTGTGACAAGTCCCCGAGGGGG ACGTCTGCATCGCCATGACGCGCCCAATGCCACCGAAGCCTCCAAGCCCCAAGGCACAACGGTGTGTCC TCCCTGTGACAACGAGTTGAAATCTGAGGCCATCATTGAACATCTCTGTGCCAGCGAGTTTGACTGAGG ATGAAAATAAAGAAGTAAAAAAGAAATGGCGACAAGAAGATTGTCCCAAGAAGAAGAAGCCCTGA AGTTGGGGCCATCAAGAAGAAGGACCTGAAGAAGCTTGTGCTGTACCTGAAGAATGGGGCTGACTGTCC CTGCCACCAGCTGGACAACCTCAGCCACCACTTCTCATCATGGGCCGCAAGGTGAAGAGCCAGTACTTG CTGACGGCCATCCACAAGTGGACAAGAAAAACAAGGAGTTCAAAACTTCATGAAGAAAATGAAAAACC ATGAGTGCCCCACCTTTCAGTCCGTGTTAAG

ACGCGTACGCGGCCGCTCGAGCAGAAACTCATCTCAGAAGAGGATCTGGCAGCAATGATATCCTGGATT ACAAGGATGACGACGATAAGGTTTAA



[View online »](#)

Protein Sequence: >RC207328 representing NM_003012
Red=Cloning site Green=Tags(s)

MGIGRSEGGRRGAALGVLLALGAALLAVGSASEYDVVSFQSDIGPYQSGRFYTKPPQCVDIPADLRLCHN
 VGYKMKVLPNLLHEHETMAEVKQQASSWVPLLKNCHAGTQVFLCSLFAPVCLDRPIYPCRWLCEAVRDSC
 EPVMQFFGFYWPEMLKCDKFPEGDVCIAMTPPNATEASKPQGTTCPPCDNELKSEAIIEHLCASEFALR
 MKIKEVKKENGDKKIVPKKKKPLKLGPIKKKDLKKLVLYLKNGADCPCHQLDNLSHHFLIMGRKVKSQYL
 LTAIHKWDKKNEFKNFMKMKMKNHECPTFQSVFK

TRTRPLEQKLISEEDLAANDILDYKDDDDKV

Chromatograms: https://cdn.origene.com/chromatograms/mg2702_e05.zip

Restriction Sites: SgfI-MluI

Cloning Scheme:

Cloning sites used for ORF Shuttling:



* The last codon before the Stop codon of the ORF

ACCN: NM_003012

ORF Size: 942 bp

OTI Disclaimer: The molecular sequence of this clone aligns with the gene accession number as a point of reference only. However, individual transcript sequences of the same gene can differ through naturally occurring variations (e.g. polymorphisms), each with its own valid existence. This clone is substantially in agreement with the reference, but a complete review of all prevailing variants is recommended prior to use. [More info](#)

OTI Annotation: This clone was engineered to express the complete ORF with an expression tag. Expression varies depending on the nature of the gene.

Components: The ORF clone is ion-exchange column purified and shipped in a 2D barcoded Matrix tube containing 10ug of transfection-ready, dried plasmid DNA (reconstitute with 100 ul of water).

Reconstitution Method:

1. Centrifuge at 5,000xg for 5min.
2. Carefully open the tube and add 100ul of sterile water to dissolve the DNA.
3. Close the tube and incubate for 10 minutes at room temperature.
4. Briefly vortex the tube and then do a quick spin (less than 5000xg) to concentrate the liquid at the bottom.
5. Store the suspended plasmid at -20°C. The DNA is stable for at least one year from date of shipping when stored at -20°C.

Note: Plasmids are not sterile. For experiments where strict sterility is required, filtration with 0.22um filter is required.

RefSeq: [NM_003012.5](#)

RefSeq Size: 4465 bp

RefSeq ORF: 945 bp

Locus ID: 6422

UniProt ID: [Q8N474](#)

Cytogenetics: 8p11.21

Domains: FRI, NTR

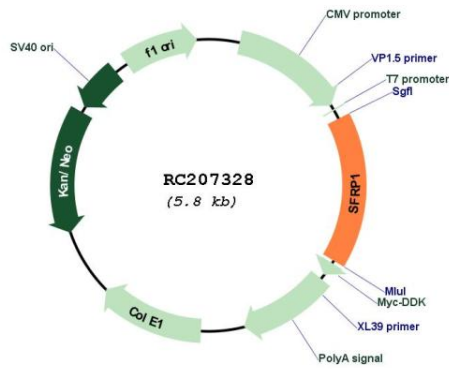
Protein Families: Adult stem cells, Cancer stem cells, Druggable Genome, ES Cell Differentiation/IPS, Secreted Protein, Stem cell relevant signaling - Wnt Signaling pathway, Transmembrane

Protein Pathways: Wnt signaling pathway

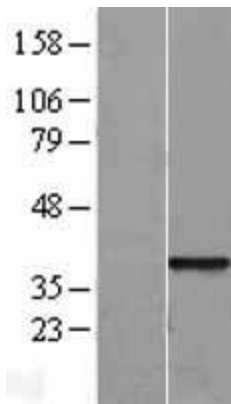
MW: 35.2 kDa

Gene Summary: This gene encodes a member of the SFRP family that contains a cysteine-rich domain homologous to the putative Wnt-binding site of Frizzled proteins. Members of this family act as soluble modulators of Wnt signaling; epigenetic silencing of SFRP genes leads to deregulated activation of the Wnt-pathway which is associated with cancer. This gene may also be involved in determining the polarity of photoreceptor cells in the retina. [provided by RefSeq, Sep 2009]

Product images:



Circular map for RC207328



Western blot validation of overexpression lysate (Cat# [LY418944]) using anti-DDK antibody (Cat# [TA50011-100]). Left: Cell lysates from untransfected HEK293T cells; Right: Cell lysates from HEK293T cells transfected with RC207328 using transfection reagent MegaTran 2.0 (Cat# [TT210002]).