

Product datasheet for **RC207327**

FSTL5 (NM_020116) Human Tagged ORF Clone

Product data:

Product Type:	Expression Plasmids
Product Name:	FSTL5 (NM_020116) Human Tagged ORF Clone
Tag:	Myc-DDK
Symbol:	FSTL5
Mammalian Cell Selection:	Neomycin
Vector:	pCMV6-Entry (PS100001)
E. coli Selection:	Kanamycin (25 ug/mL)



[View online »](#)

ORF Nucleotide
Sequence:

>RC207327 ORF sequence
Red=Cloning site Blue=ORF Green=Tags(s)

TTTTGTAATACGACTCACTATAGGGCGGCCGGAATTCGTGACTGGATCCGGTACCGAGGAGATCTGCC
GCC**CGCATCGCC**

ATGTTTAAGTGTGGTCAAGTGTCTTGGTCTCGGATTCATTTTTCTGGAGTCGGAAGGAAGGCCAACCA
AAGAAGGAGGATATGGCCTTAAATCCTATCAGCCTCTAATGAGATTGCGACATAAGCAGGAAAAAATCA
AGAAAGTTCAAGAGTCAAAGGATTTATGATTACAGGATGGCCCTTTTGGATCTTGTGAAAAAAGTACTGT
GGTTTGGGAAGACACTGTGTACCAGCAGAGAGACAGGGCAAGCAGAATGTGCCTGTATGGACCTTTGCA
AACGTCACTACAAACCTGTGTGGATCTGACGGAGAATTCTATGAAAACCACTGTGAAGTGCACAGAGC
TGCTTGCCTGAAAAACAAAAGATTACCATTGTTACAATGAAGACTGCTTCTTTAAAGGAGATAAGTGC
AAGACTACTGAATACAGCAAGATGAAAAATATGCTATTAGATTTACAAAATCAAAAATATATTATGCAAG
AAAATGAAAATCCTAATGGCGACGACATATCTCGGAAGAAGCTATTGGTGGATCAAAATGTTAAATATT
TGATGCAGACAGTAATGGACTTGTAGATATTAATGAACTAACTCAGGTGATAAAACAGGAAGAAGCTGGC
AAGGATCTCTTTGATTGTACTTTGTATGTTCTATTGAAATATGATGATTTAATGCTGACAAGCACCTGG
CTCTTGAAGAATTTATAGAGCATTCCAAGTATCCAGTTGAGTCTGCCAGAAGATCAGAAAATAAGCAT
CACTGCAGCAACTGTGGGACAAAGTGTCTTGTGAGCTGTGCCATTCAAGGAACCCTGAGACCTCCCATT
ATCTGGAAAAGGAACAATATTATTCTAAATAATTTAGATTTGGAAGACATCAATGACTTTGGAGATGATG
GGTCTTGTATATTAAGGTTACCACAACCTCACGTTGGCAATTACACCTGCTATGCAGATGGCTATGA
ACAAGTCTATCAGACTCACATCTTCCAAGTGAATGTTCTCCAGTCATCCGGGTGATCCAGAGAGTCAG
GCTAGAGAGCCTGGGGTAACTGCCAGTCTTAGGTGCCATGCAGAGGGCATAACAAAGCCTCAGCTGGCT
GGTTGAAGAATGGAATGATATTACACCAAGCTTTCCAACAACCTCACGCTTCAAGCAAAATGGCAGTGA
GGTTCACATAAGCAATGTGCGCTATGAAGATACTGGAGCATACACTTGTATCGCAAAGAATGAAGCAGGA
GTGGATGAAGACATCTCTCTCTTTTGTGGAAGACTCTGCTAGAAAGACCCCTAGCTAACATATTATGGA
GAGAAGAAGTCTGGGAATTGGGAACATGTTCTATGTTTTTTATGAAGATGGAATCAAAGTGATACAACC
CATAGAATGTGAATTTAGAGGCACATTAAGCCTAGTAAAAGCTCCTTGGATTTAGAGTGAAGTCTGT
CCCAAAGCTGAGGGAGATGAAGTTCAGAGGTGTGTGTGGGCATCAGCTGTTAATGTCAAAGACAAGTTCA
TTTATGTTGCACAGCCAACCTTTGGACAGAGTCTTATTGTTGATGTGCAGTCCAAAAAGTTGTTACGGC
AGTGAGCAGACACCTGTCCAGTTAAATTACACTATGACAAATCACATGATCAGGTCTGGGTGCTAAGC
TGGGGTACCTTGGAGAAGTCATCACCAACTACAGGTAATTACCCTGGCCAGTGGGAATGTGCCTCACC
ACACGATCCACACCCAACAGTGGGAAAGCAATTTGACAGAGTGGATGATTTTTTTCATCCACCACAAC
ACTCATTATCACCCATATGAGGTTTGGATTTATCTTCTATAAAGATGAAGCTGCACTACAAAAAATGAT
ATTGAAACCATGTATACATCAAGACAATTAACCTGAAGGACTATAAGTGCCTCCTCAGTCATTGGCAT
ATACACTTTGGGAGGCTACTACTTCAATGGCTGCAAACCTGACAGCACCAGGAGCAGTTTCCCACAGGT
CATGGTGGACGGTGAATGACTCAGTCATTGGGTTCAATAGTGTGTGACGGGCACTCCATATGTCTCT
CCAGATGGCCACTACCTTGTGAGCATTAAATGATGTGAAAGGCTTGTGAAGGTTTCAAGTACATTACCATCA
GAGGAGAAATACAGGAGGCTTTTGTATTTACACAAATCTGCACATATCTGATCTGGCATTTCACCATC
CTTTACTGAAGCCCAACATAAATCTACGGTAGTTCAAGCACACAACTGATGTGCTTTTGTGGAG
CTCTCTTCTGGGAAGTCAAGATGATAAAGAGTCTCAAGGAACCACTCAAGGCAGAAGAATGGCCTTGG
ACCGGAAAAACAGGCAAAATCCAGGACAGTGGCTTGTGGTCAATACCTGATGACACCTTCAAGGACTC
TCTCTTATCCTAGATGGACGACTCAATAAATTAAGTGTGAGATCACTGAAGTTGAAAAAGGAAATACA
GTCATTTGGGTTGGAGATGCC

ACGCGTACGCGGCCGCTCGAGCAGAACTCATCTCAGAAGAGGATCTGGCAGCAATGATATCCTGGATT
ACAAGGATGACGACGATAAGGTTTAA

Protein Sequence: >RC207327 protein sequence
Red=Cloning site Green=Tags(s)

MFKCWSVVLVLGFIFLESEGRPTKEGGYGLKSYQPLMRLRHKQEKNQESSRVKGFMIQDGPFGSCENKYC
GLGRHCVTSRETGQAECACMDLCKRHYKPVCGSDGEFYENHCEVHRAACLKKQKITIVHNEDCFFKGDKC
KTTEYSKMKMMLLDLQNKYIMQENENPNGDDISRKLLVDQMFKYFDADSNGLVDINELTQVIKQEELG
KDLFDCTLYVLLKYDDFNADKHLALEEFYRAFQVIQLSLPEDQKLSITAATVGQSAVLSCAIQGTLRPPI
IWKRNIIILNLDLEDINDFGDDGSLYITKVTTTHVGNVTCYADGYEQVYQTHIFQVNVPPVIRVYVESQ
AREPGVTASLRCHAEGIPKQLGWLKNGIDITPKLSKQLTLQANGSEVHISNVRYEDTGAYTCIAKNEAG
VDEDISSLFVEDSARKTLANILWREGLGIGNMFYVYEDGIKVIQPIECEFRHIKPKSEKLLGFQDEVC
PKAEGDEVQRCVWASAVNVKDKFIYVAQPTLDRVLIVDVQSQKVQAVSTDPVPVKLHYDKSHDQVWVLS
WGTLEKSSPTLQVITLASGNVPHHTIHTQPVGKQFDRVDDFFIPTTTLIIITHMRFGLHKDEAALQKID
IETMSYIKTINLKDYKCVPSLAYTHLGGYFYGCKPDSTGAVSPQVMVDGVTDSVIGFNSDVTGTPYVS
PDGHYLVSINDVKGLVRVQYITIRGEIQEAFDIYTNLHISDLAFQPSFTEAHQYNIYGSSTQTDVLFVE
LSSGKVKMIKSLKEPLKAEWPWNRKNRQIQDSGLFGQYLMTPSKDSLFLDGRNLKLNCEITEVEKGNT
VIWVGDA

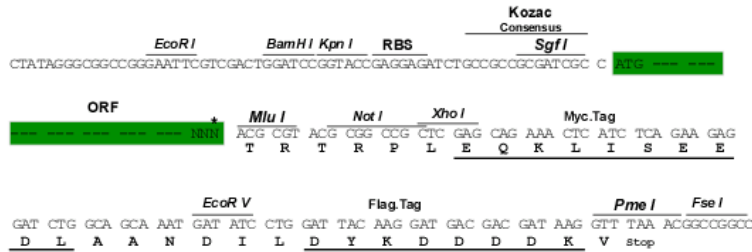
TRTRPLEQKLISEEDLAANDILDYKDDDDKV

Chromatograms: https://cdn.origene.com/chromatograms/mk6340_a04.zip

Restriction Sites: SgfI-MluI

Cloning Scheme:

Cloning sites used for ORF Shutting:



* The last codon before the Stop codon of the ORF

ACCN: NM_020116

ORF Size: 2541 bp

OTI Disclaimer: The molecular sequence of this clone aligns with the gene accession number as a point of reference only. However, individual transcript sequences of the same gene can differ through naturally occurring variations (e.g. polymorphisms), each with its own valid existence. This clone is substantially in agreement with the reference, but a complete review of all prevailing variants is recommended prior to use. [More info](#)

OTI Annotation: This clone was engineered to express the complete ORF with an expression tag. Expression varies depending on the nature of the gene.

Components: The ORF clone is ion-exchange column purified and shipped in a 2D barcoded Matrix tube containing 10ug of transfection-ready, dried plasmid DNA (reconstitute with 100 ul of water).

- Reconstitution Method:**
1. Centrifuge at 5,000xg for 5min.
 2. Carefully open the tube and add 100ul of sterile water to dissolve the DNA.
 3. Close the tube and incubate for 10 minutes at room temperature.
 4. Briefly vortex the tube and then do a quick spin (less than 5000xg) to concentrate the liquid at the bottom.
 5. Store the suspended plasmid at -20°C. The DNA is stable for at least one year from date of shipping when stored at -20°C.

RefSeq: [NM_020116.2](#), [NP_064501.1](#)

RefSeq Size: 4835 bp

RefSeq ORF: 2544 bp

Locus ID: 56884

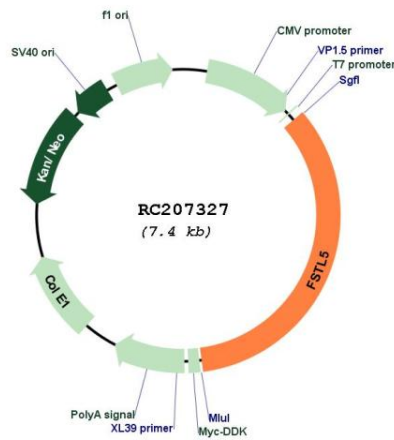
UniProt ID: [Q8N475](#)

Cytogenetics: 4q32.2

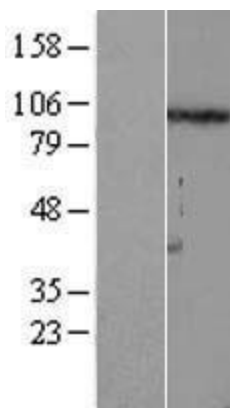
Protein Families: Secreted Protein

MW: 95.7 kDa

Product images:



Circular map for RC207327



Western blot validation of overexpression lysate (Cat# [LY412657]) using anti-DDK antibody (Cat# [TA50011-100]). Left: Cell lysates from untransfected HEK293T cells; Right: Cell lysates from HEK293T cells transfected with RC207327 using transfection reagent MegaTran 2.0 (Cat# [TT210002]).