

Product datasheet for RC207324

COPS8 (NM_006710) Human Tagged ORF Clone

Product data:

Product Type: Expression Plasmids
Product Name: COPS8 (NM_006710) Human Tagged ORF Clone
Tag: Myc-DDK
Symbol: COPS8
Synonyms: COP9; CSN8; SGN8
Mammalian Cell Selection: Neomycin
Vector: pCMV6-Entry (PS100001)
E. coli Selection: Kanamycin (25 ug/mL)
ORF Nucleotide Sequence: >RC207324 ORF sequence
 Red=Cloning site Blue=ORF Green=Tags(s)

TTTTGTAATACGACTCACTATAGGGCGGCCGGAATTCGTCGACTGGATCCGGTACCGAGGAGATCTGCC
GCC**CGATCGCC**

ATGCCAGTGGCGGTGATGGCGGAAAGCGCCTTTAGTTTCAAAAAGTTGCTGGATCAGTGCAGAGAACCAGG
AGCTCGAGGCCCTGGAGGAATTGCTACACCCCAAGTGTATGGTCAGCTTCTAGCTTTATATTTGCTCCA
TAATGACATGAATAATGCAAGATATCTTTGGAAAAGAATACCACCTGCTATAAAATCTGCAAATCTGAA
CTTGGGGGAATTTGGTCAGTAGGACAAAAGAATCTGGCAGAGAGATTTCCCTGGGATCTATAACAACATCA
ACGCTCACCAGTGGTCTGAGACGGTCCAGCCAATTATGGAAGCACTTAGAGATGCAACAAGGAGACGCGC
CTTTGCCCTGGTCTCTCAAGCGTATACTTCAATCATCGCCGATGATTTTGCAGCCTTTGTTGGACTTCT
GTAGAAGAGGCTGTGAAAGGCATATTAGAACAAGGATGGCAAGCTGATTCCACCACAAGAATGGTTCTGC
CCAGAAAGCCAGTTGCAGGGGCCCTGGATGTTTCTTTAAACAAGTTTATCCCTTATCAGAGCCTGCTCC
AGTTCCCCCAATACCCAATGAACAGCAGTTAGCCAGACTGACGGATTATGTGGCTTTCCTTGAAAAC

ACGCGTACGCGGCCGCTCGAGCAGAAACTCATCTCAGAAGAGGATCTGGCAGCAAATGATATCCTGGATT
ACAAGGATGACGACGATAAGGTTTAA

Protein Sequence: >RC207324 protein sequence
 Red=Cloning site Green=Tags(s)

MPVAVMAESAFSFKLLDQCENQLEAPGGIATPPVYQLLALYLLHNDMNNARYLWKRIIPPAIKSANSE
LGGIWSVGQRIWQRDFPGIYTTINAHQWSETVQPIMEALRDATRRRAFALVSQAYTSIIADDFAAFVGLP
VEEAVKGILEQGWQADSTTRMVLPRKPVAGALDVSFNKFIPLSEPAVPPVPPNEQQLARLTDYVAFLEN

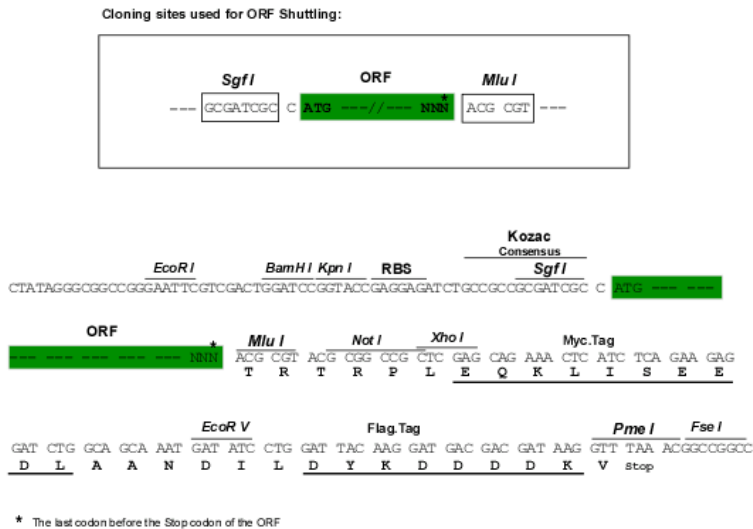
TRTRPLEQKLISEEDLAANDILDYKDDDDKV



Chromatograms: https://cdn.origene.com/chromatograms/mk6365_a06.zip

Restriction Sites: SgfI-MluI

Cloning Scheme:



ACCN: NM_006710

ORF Size: 627 bp

OTI Disclaimer: The molecular sequence of this clone aligns with the gene accession number as a point of reference only. However, individual transcript sequences of the same gene can differ through naturally occurring variations (e.g. polymorphisms), each with its own valid existence. This clone is substantially in agreement with the reference, but a complete review of all prevailing variants is recommended prior to use. [More info](#)

OTI Annotation: This clone was engineered to express the complete ORF with an expression tag. Expression varies depending on the nature of the gene.

Components: The ORF clone is ion-exchange column purified and shipped in a 2D barcoded Matrix tube containing 10ug of transfection-ready, dried plasmid DNA (reconstitute with 100 ul of water).

Reconstitution Method:

1. Centrifuge at 5,000xg for 5min.
2. Carefully open the tube and add 100ul of sterile water to dissolve the DNA.
3. Close the tube and incubate for 10 minutes at room temperature.
4. Briefly vortex the tube and then do a quick spin (less than 5000xg) to concentrate the liquid at the bottom.
5. Store the suspended plasmid at -20°C. The DNA is stable for at least one year from date of shipping when stored at -20°C.

RefSeq: [NM_006710.5](#)

RefSeq Size: 2274 bp

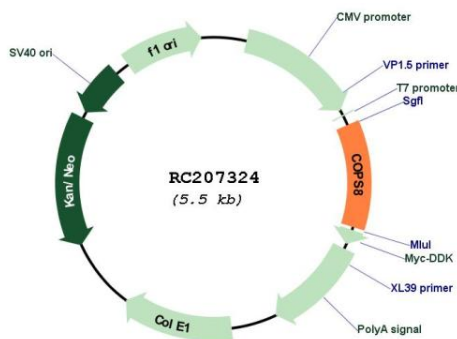
RefSeq ORF: 630 bp

Locus ID: 10920

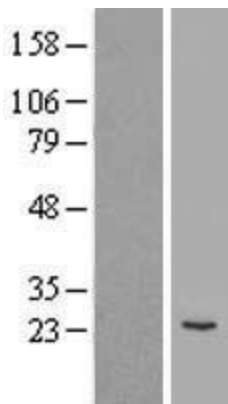
UniProt ID: [Q99627](#)
 Cytogenetics: 2q37.3
 MW: 23.2 kDa

Gene Summary: The protein encoded by this gene is one of the eight subunits of COP9 signalosome, a highly conserved protein complex that functions as an important regulator in multiple signaling pathways. The structure and function of COP9 signalosome is similar to that of the 19S regulatory particle of 26S proteasome. COP9 signalosome has been shown to interact with SCF-type E3 ubiquitin ligases and act as a positive regulator of E3 ubiquitin ligases. Alternatively spliced transcript variants encoding distinct isoforms have been observed. [provided by RefSeq, Jul 2008]

Product images:



Circular map for RC207324



Western blot validation of overexpression lysate (Cat# [LY416469]) using anti-DDK antibody (Cat# [TA50011-100]). Left: Cell lysates from untransfected HEK293T cells; Right: Cell lysates from HEK293T cells transfected with RC207324 using transfection reagent MegaTran 2.0 (Cat# [TT210002]).