

## Product datasheet for **RC207319**

### MXI1 (NM\_130439) Human Tagged ORF Clone

#### Product data:

|                           |   |
|---------------------------|---|
| Product Type:             | Expression Plasmids   |
| Product Name:             | MXI1 (NM_130439) Human Tagged ORF Clone                           |
| Tag:                      | Myc-DDK   |
| Symbol:                   | MXI1  |
| Synonyms:                 | bHLHc11; MAD2; MXD2; MXI  |
| Mammalian Cell Selection: | Neomycin  |
| Vector:                   | pCMV6-Entry (PS100001)  |
| E. coli Selection:        | Kanamycin (25 ug/mL)  |
| ORF Nucleotide Sequence:  | >RC207319 ORF sequence<br>Red=Cloning site Blue=ORF Green=Tags(s) |

TTTTGTAATACGACTCACTATAGGGCGGCCGGAATTCGTCGACTGGATCCGGTACCGAGGAGATCTGCC  
GCC**CGATCGCC**

ATGGGCAAACGCGGGCGGCCGCAAGGAGGCGCGCTGCGAGGGCGGGGCTGGCCCCGCGCGCCC  
CGGCTGTGCCCCCGCGTGGCCGCGCCCAGCCCCGGCCCTGCCGAGGACCCCGTGGGGCCAAGCC  
CAGGTGCCCTTCTCAGACATTTTCAACACCAGCGAGAAGCTCGATGGAGAAGCACATCAACTTTTCTG  
CAGAACGTGCAGATTCTGCTCGAGGCCCGCAGCTACCTGGAGCAGATCGAGAAAGAAAACAAAAAGTGTG  
AACATGGCTACGCTCTTATTCCCGTCCATGCCGAGCCCCGACTGCAGCATTCAAAGCCCCACGGAG  
GTTGAGCCGGGCACAGAAACACAGCAGCGGAGCAGCAACACCAGCACTGCCAACAGATCTACACACAAT  
GAGCTGGAAAAGAATCGACGAGCTCATCTGCGCCTTTGTTTAGAACGCTTAAAAGTTCTGATTCCACTAG  
GACCAGACTGCACCCGGCACACAACACTTGGTTTGTCTCAACAAAGCCAAAGCACACATCAAGAACTTGA  
AGAAGCTGAAAGAAAAGCCAGCACCAGCTCGAGAATTTGGAACGAGAACAGAGATTTTTAAAGTGGCGA  
CTGGAACAGCTGCAGGGTCTCAGGAGATGGAACGAATACGAATGGACAGCATTGGATCAACTATTTCTT  
CAGATCGTTCTGATTAGAGCGAGAGGAGATTGAAGTGGATGTTGAAAGCACAGAGTTCTCCCATGGAGA  
AGTGGACAATATAAGTACCACCAGCATCAGTGACATTGATGACCACAGCAGCCTGCCGAGTATTGGGAGT  
GACGAGGGTTACTCCAGTGCCAGTGTCAAACTTTATTCACTTCA

**ACGCGT**ACGCGGGCGCTCGAGCAGAAACTCATCTCAGAAGAGGATCTGGCAGCAAATGATATCCTGGATT  
ACAAGGATGACGACGATAAGGTTTAA



[View online »](#)

**Protein Sequence:** >RC207319 protein sequence  
Red=Cloning site Green=Tags(s)

MGKRGRPRKEARCEGAGLAPAAPPVPPAVAAPQPPALPEDPAGAKPRCPFSDIFNTSENSMEKHINTFL  
 QNVQILLEAASYLEQIEKENKKCEHGYASSFPSPRLQHSKPPRRLSRAQKHSSGSSNTSTANRSTHN  
 ELEKNRRAHLRLCLERLKVLIPLGPDCTRHTTLGLLNKAKAHIKLEEERKSQHQLENLEREQRFLKWR  
 LEQLQGPQEMERIRMSIGSTISSDRSDSEREEIEVDVESTEF SHGEVDNI STTTSISDIDDHSSLPSIGS  
 DEGYSSASVKLSFTS

TRTRPLEQKLISEEDLAANDILDYKDDDDKV

**Chromatograms:** [https://cdn.origene.com/chromatograms/mk6858\\_d03.zip](https://cdn.origene.com/chromatograms/mk6858_d03.zip)

**Restriction Sites:** SgfI-MluI

**Cloning Scheme:**



**ACCN:** NM\_130439

**ORF Size:** 885 bp

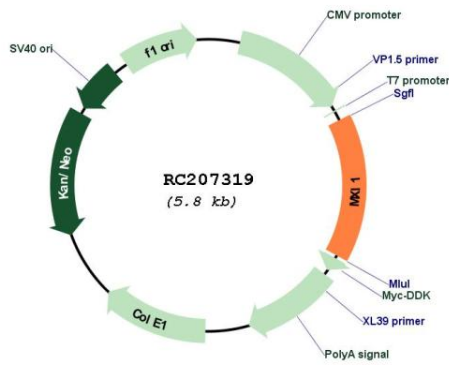
**OTI Disclaimer:** The molecular sequence of this clone aligns with the gene accession number as a point of reference only. However, individual transcript sequences of the same gene can differ through naturally occurring variations (e.g. polymorphisms), each with its own valid existence. This clone is substantially in agreement with the reference, but a complete review of all prevailing variants is recommended prior to use. [More info](#)

**OTI Annotation:** This clone was engineered to express the complete ORF with an expression tag. Expression varies depending on the nature of the gene.

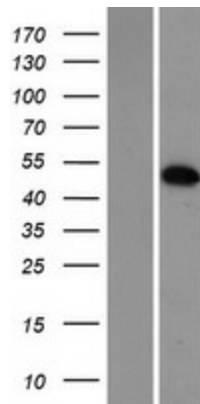
**Components:** The ORF clone is ion-exchange column purified and shipped in a 2D barcoded Matrix tube containing 10ug of transfection-ready, dried plasmid DNA (reconstitute with 100 ul of water).

|                               |  |
|-------------------------------|--|
| <b>Reconstitution Method:</b> | <ol style="list-style-type: none"><li>1. Centrifuge at 5,000xg for 5min.</li><li>2. Carefully open the tube and add 100ul of sterile water to dissolve the DNA.</li><li>3. Close the tube and incubate for 10 minutes at room temperature.</li><li>4. Briefly vortex the tube and then do a quick spin (less than 5000xg) to concentrate the liquid at the bottom.</li><li>5. Store the suspended plasmid at -20°C. The DNA is stable for at least one year from date of shipping when stored at -20°C.</li></ol>  |
| <b>RefSeq:</b>                | <a href="#">NM_130439.3</a> , <a href="#">NP_569157.2</a>  |
| <b>RefSeq Size:</b>           | 3470 bp  |
| <b>RefSeq ORF:</b>            | 888 bp   |
| <b>Locus ID:</b>              | 4601   |
| <b>UniProt ID:</b>            | <a href="#">P50539</a>   |
| <b>Cytogenetics:</b>          | 10q25.2  |
| <b>Domains:</b>               | HLH  |
| <b>Protein Families:</b>      | Druggable Genome, Transcription Factors  |
| <b>MW:</b>                    | 32.8 kDa   |
| <b>Gene Summary:</b>          | <p>Expression of the c-myc gene, which produces an oncogenic transcription factor, is tightly regulated in normal cells but is frequently deregulated in human cancers. The protein encoded by this gene is a transcriptional repressor thought to negatively regulate MYC function, and is therefore a potential tumor suppressor. This protein inhibits the transcriptional activity of MYC by competing for MAX, another basic helix-loop-helix protein that binds to MYC and is required for its function. Defects in this gene are frequently found in patients with prostate tumors. Three alternatively spliced transcripts encoding different isoforms have been described. Additional alternatively spliced transcripts may exist but the products of these transcripts have not been verified experimentally. [provided by RefSeq, Jul 2008]</p> |

Product images:



Circular map for RC207319



Western blot validation of overexpression lysate (Cat# [LY408970]) using anti-DDK antibody (Cat# [TA50011-100]). Left: Cell lysates from untransfected HEK293T cells; Right: Cell lysates from HEK293T cells transfected with RC207319 using transfection reagent MegaTran 2.0 (Cat# [TT210002]).