

Product datasheet for **RC207318**

MMP15 (NM_002428) Human Tagged ORF Clone

Product data:

Product Type:	Expression Plasmids
Product Name:	MMP15 (NM_002428) Human Tagged ORF Clone
Tag:	Myc-DDK
Symbol:	MMP15
Synonyms:	MMP-15; MT2-MMP; MT2MMP; MTMMP2; SMCP-2
Mammalian Cell Selection:	Neomycin
Vector:	pCMV6-Entry (PS100001)
E. coli Selection:	Kanamycin (25 ug/mL)



[View online »](#)

ORF Nucleotide
Sequence:

>RC207318 ORF sequence
Red=Cloning site Blue=ORF Green=Tags(s)

TTTTGTAATACGACTCACTATAGGGCGGCCGGGAATTCGTCGACTGGATCCGGTACCGAGGAGATCTGCC
GCC**CGGATCGCC**

ATGGGCAGCGACCCGAGCGCCCGGACGGCCGGGCTGGACGGGCAGCCTCCTCGGCGACCGGGAGGAGG
CGGCGCGGCCGCGACTGCTGCCGCTGCTCCTGGTGCTTCTGGGCTGCCTGGGCCTTGGCGTAGCGGCCGA
AGACGCGGAGGTCCATGCCGAGAACTGGCTGCGGCTTTATGGCTACCTGCCTCAGCCCAGCCGCATATG
TCCACCATGCGTTCGCCAGATCTTGGCCTCGGCCCTTGACAGATGCAGCGCTTCTACGGGATCCAG
TCACCGGTGTGCTCGACGAAGAGACCAAGGAGTGGATGAAGCGGCCCGCTGTGGGGTGCCAGACAGTT
CGGGGTACGAGTAAAGCAACCTGCGGCGGCGTGGAAAGCGCTACGCCCTACCGGGAGGAAGTGAAC
AACCACCATCTGACCTTTAGCATCCAGAACTACACGGAGAAGTTGGGCTGGTACCACTCGATGGAGGCGG
TGCGCAGGGCCTTCCGCGTGTGGGAGCAGGCCACGCCCTGGTCTTCCAGGAGTGCCCTATGAGGACAT
CCGGCTGCGGCGACAGAAGGAGGCCGACATCATGGTACTTTTGCCTCTGGCTTCCACGGCGACAGCTCG
CGTTTTGATGGCACCGGTGGCTTTCTGGCCACGCCTATTTCCCTGGCCCGGCCAGGCGGGGACACCC
ATTTTGACGCAGATGAGCCCTGGACCTTCTCCAGCACTGACCTGCATGGAACAACCTTCTCCTGGTGGC
AGTGATGAGCTGGGCCACGCGCTGGGGCTGGAGCACTCCAGCAACCCCAATGCCATCATGGCACCGTTC
TACCAGTGAAGGACGTTGACAACCTTAAGTGGCCGAGGACGATCTCCGTGGCATCCAGCAGCTTACG
GTACCCAGACGGTCAGCCACAGCCTACCCAGCCTCTCCCACTGTGACGCCACGGCGGCCAGGCCGGCC
TGACCACCGGCCCGCCCGCCCTCCCAAGCACCACCCCAAGTGGGAAGCCAGAGCGGCCCCCAAGCCG
GGCCCTCCAGTCCAGCCCGAGCCACAGAGCGGCCCGACCAGTATGGCCCAACATCTGCGACGGGGACT
TTGACACAGTGGCCATGCTTCCGCGGGGAGATGTTCTGTGTTCAAGGGCCGCTGGTCTGGCGAGTCCGGCA
CAACCGCTCCTGGACAACATCCCATGCCATCGGGCACTTCTGGCGTGGTCTGCCCGGTGACATCAGT
GCTGCCTACGAGCGCAAGACGGTCGTTTTGTCTTTTCAAAGGTGACCGCTACTGGCTCTTTCGAGAAG
CGAACCTGGAGCCCGGCTACCCACAGCCGCTGACCAGCTATGGCCTGGGCATCCCTATGACCGCATTGA
CACGGCCATCTGGTGGGAGCCACAGGCCACACCTTCTTCTTCAAAGAGGACAGGTAAGGCGTTCAC
GAGGAGACACAGCGTGGAGACCTGGGTACCCCAAGCCATCAGTGTCTGGCAGGGGATCCCTGCCTCC
CTAAAGGGGCTTCTGAGCAATGACGCAGCCTACACCTACTTCTACAAGGGCACCAATACTGAAATT
CGACAATGAGCGCTGCGGATGGAGCCCGGCTACCCCAAGTCCATCCTGCGGGACTTCATGGGCTGCCAG
GAGCACGTGGAGCCAGGCCCGGATGGCCCGACGTGGCCCGGCCCTTCAACCCACGGGGGTGCAG
AGCCCGGGGCGGACAGCGCAGAGGGCGACGTGGGGATGGGGATGGGGACTTTGGGGCCGGGTCAACAA
GGACGGGGGACGCGGTGGTGGTGCAGATGGAGGAGTGGCACGGACGGTGAACGTGGTGGTGGTGGT
GTGCCACTGCTGCTGCTCTGCGTCTGGGCTCACCTACGCGCTGGTGCAGATGCAGCGCAAGGGTG
CGCCACGTGCTCTGCTTTACTGCAAGCGCTCGCTGCAGGAGTGGGTC

ACGCGTACGCGGCCGCTCGAGCAGAACTCATCTCAGAAGAGGATCTGGCAGCAATGATATCCTGGATT
ACAAGGATGACGACGATAAGGTTTAA

Protein Sequence: >RC207318 protein sequence
Red=Cloning site Green=Tags(s)

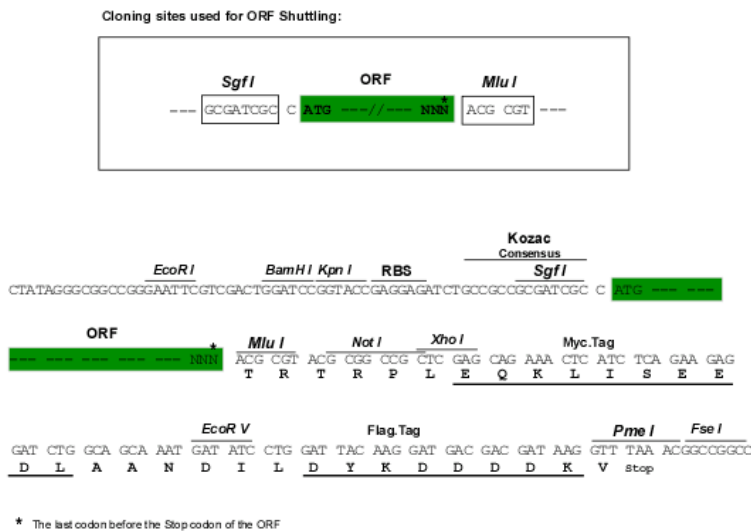
MGSDPSAPGRPGWGTGSLLDGDEEAARPLLPLLLVLLGCLGLGVAEDAIEVHAENWLRLYGYLPQPSRHM
 STMRSAQILASALAEMQRFYGIPTVGLDEETKEWMKPRRCGVPDQFQVGVKANKLRRRRKRYALTGRKWN
 NHHLTFSIQNYTEKLGWYHSMEAVRRAFRVWEQATPLVFQEVPIEDIRLRRQKEADIMVLFASGFHGDSS
 PFDGTGGFLAHAYFPGPLGGDTHFDADEPWTFSSDHLHGNNLFLVAVHELGHALGLEHSSNPNAIMAPF
 YQWKDVDFNFKLPEDDLRGIQQLYGTDPDQFPQTQPLPTVTPRRPGRPDHRPPRPPPPPGGKPERPPK
 GPPVQPRATERPDQYGPNICDGDFTVAMLRGEMFVFKGRWFWRVRHNRVLDNYPMPIGHFWRGLPGDIS
 AAYERQDGRFVFFKGDYWLFREANLEPGYPQPLTSYGLGIPYDRIDTAIWWEPTGHTFFQEDRYWRFN
 EETQRGDPGYPKISVWQGIKASPKGAFLSNDAAYTYFYKGTKYWKFDNERLRMEPGYKPSILRDFMGCQ
 EHVEPGPRWPDVARPPFNPHGGAEPGADSAEGDVGDDGDFGAGVKNKGGSRVVVQMEEVARTVNVVMVL
 VPLLLLLCVLGLTYALVQMQRKGAPRVLLYCKRSLQEWV

TRTRPLEQKLISEEDLAANDILDYKDDDDKV

Chromatograms: https://cdn.origene.com/chromatograms/mk6002_f06.zip

Restriction Sites: SgfI-MluI

Cloning Scheme:



ACCN: NM_002428

ORF Size: 2007 bp

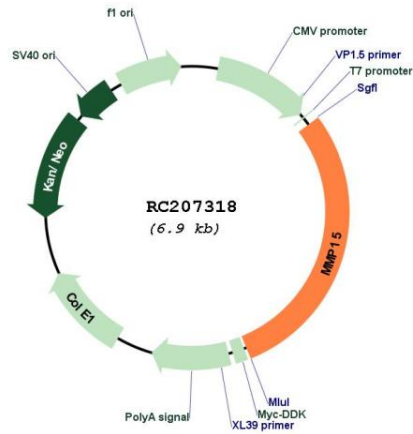
OTI Disclaimer: The molecular sequence of this clone aligns with the gene accession number as a point of reference only. However, individual transcript sequences of the same gene can differ through naturally occurring variations (e.g. polymorphisms), each with its own valid existence. This clone is substantially in agreement with the reference, but a complete review of all prevailing variants is recommended prior to use. [More info](#)

OTI Annotation: This clone was engineered to express the complete ORF with an expression tag. Expression varies depending on the nature of the gene.

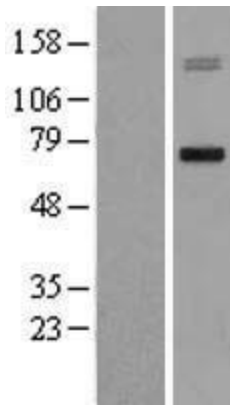
Components: The ORF clone is ion-exchange column purified and shipped in a 2D barcoded Matrix tube containing 10ug of transfection-ready, dried plasmid DNA (reconstitute with 100 ul of water).

Reconstitution Method:	<ol style="list-style-type: none">1. Centrifuge at 5,000xg for 5min.2. Carefully open the tube and add 100ul of sterile water to dissolve the DNA.3. Close the tube and incubate for 10 minutes at room temperature.4. Briefly vortex the tube and then do a quick spin (less than 5000xg) to concentrate the liquid at the bottom.5. Store the suspended plasmid at -20°C. The DNA is stable for at least one year from date of shipping when stored at -20°C.
RefSeq:	NM_002428.4
RefSeq Size:	4456 bp
RefSeq ORF:	2010 bp
Locus ID:	4324
UniProt ID:	P51511
Cytogenetics:	16q21
Domains:	hemopexin, Peptidase_M10, ZnMc
Protein Families:	Druggable Genome, Protease, Transmembrane
MW:	75.8 kDa
Gene Summary:	<p>This gene encodes a member of the peptidase M10 family and membrane-type subfamily of matrix metalloproteinases (MMPs). Proteins in this family are involved in the breakdown of extracellular matrix in normal physiological processes, such as embryonic development, reproduction, and tissue remodeling, as well as in disease processes, such as arthritis and metastasis. Members of this subfamily contain a transmembrane domain suggesting that these proteins are expressed at the cell surface rather than secreted. The encoded preproprotein is proteolytically processed to generate the mature protease. This protein may play a role in cancer progression. [provided by RefSeq, Jan 2016]</p>

Product images:



Circular map for RC207318



Western blot validation of overexpression lysate (Cat# [LY400870]) using anti-DDK antibody (Cat# [TA50011-100]). Left: Cell lysates from untransfected HEK293T cells; Right: Cell lysates from HEK293T cells transfected with RC207318 using transfection reagent MegaTran 2.0 (Cat# [TT210002]).