

## Product datasheet for RC207316

### MA2 (PNMA2) (NM\_007257) Human Tagged ORF Clone

#### Product data:

Product Type:	Expression Plasmids
Product Name:	MA2 (PNMA2) (NM_007257) Human Tagged ORF Clone
Tag:	Myc-DDK
Symbol:	MA2
Synonyms:	MA2; MM2; RGAG2
Mammalian Cell Selection:	Neomycin
Vector:	pCMV6-Entry (PS100001)
E. coli Selection:	Kanamycin (25 ug/mL)
ORF Nucleotide Sequence:	>RC207316 representing NM_007257 Red=Cloning site Blue=ORF Green=Tags(s)

TTTTGTAATACGACTCACTATAGGGCGGCCGGAATTCGTCGACTGGATCCGGTACCGAGGAGATCTGCC  
GCC**CGATCGCC**

ATGGCGCTGGCACTGTTAGAGGACTGGTGCAGGATAATGAGTGTGGATGAGCAGAAGTCACTGATGGTTA  
CGGGGATACCGGCGGACTTTGAGGAGGCTGAGATTCAGGAGGTCCTTCAGGAGACTTTAAAGTCTCTGGG  
CAGGTATAGACTGCTTGGCAAGATATCCGGAAGCAGGAGAATGCCAATGCTGTCTTACTAGAGCTTCTG  
GAAGATACTGATGTCTCGCCATCCCAGTGAGGTCCAGGAAAGGGGGTGTCTGGAAGGTGATCTTTA  
AGACCCCTAATCAGGACTGAGTTTCTTGAAAGATTGAACCTGTTTCTAGAAAAAGAGGGGCAGACGGT  
CTCGGGTATGTTTCGAGCCCTGGGCAGGAGGGGTGTCTCCAGCCACAGTGCCTGCATCTCACCAGAA  
TACTGGCCCATTTGTTGGGACAGGCAATGGCACATGCGCCTCAGCCCTGCTACCCATGAGATACCGGA  
AACTGCGAGTATTCTCAGGGAGTGTGTCCAGCCCGAGGAAGAGTCCCTTGAGGTCTGGTTGGAACA  
GGCCACGGAGATAGTCAAAGAGTGGCCAGTAACAGAGGCAGAAAAGAAAAGGTGGCTGGCGGAAAGCCTG  
CGGGCCCTGCCCTGGACCTCATGCACATAGTGCAGGCAGACAACCCGTCCATCAGTGTAGAAGAGTGT  
TGGAGGCTTTAAGCAAGTGTGGGAGCCTAGAGAGCCGAGGACAGCCAGGTGAGGTATCTGAAGAC  
CTATCAGGAGGAAGGAGAGAAGTCTCAGCCTATGTGTTACGGCTAGAAACCTGCTCCGGAGAGCGGTG  
GAGAAACGCGCCATCCCTCGGCGTATTGCGGACCAGGTCAGCCTGGAGCAGGTCAATGGCTGGGGCCACTC  
TTAACAGATGCTGTGGTCCCGCTTAGGGAGCTGAAGGATCAGGGCCCGCCCGCCAGCTTCTTGAGCT  
AATGAAGTAATACGGGAAGAAGAGGAGGAAGAGGCTCCTTTGAGAATGAGAGTATCGAAGAGCCAGAG  
GAACGAGATGGCTATGGCCGCTGGAATCATGAGGGAGACGAC

**ACGCGT**ACGCGGCCGCTCGAGCAGAACTCATCTCAGAAGAGGATCTGGCAGCAATGATATCCTGGATT  
ACAAGGATGACGACGATAAGGTTAA



[View online »](#)

**Protein Sequence:** >RC207316 representing NM\_007257  
Red=Cloning site Green=Tags(s)

MALALLEDWCRIMSVDEQKSLMVTGIPADFEAEIQEVLQETLKSLGRYRLLGKIFRKQENANAVLLELL  
 EDTDVSAIPSEVQGGKGGVWVKVIFKTPNQDTEFLERLNLFLEKEGQTVSGMFRALGQEGVSPATVPCISPE  
 LLAHLLGQAMAHAPQPLLPMPYRKLRFVSGSAVPAPEEESFEVWLEQATEIVKEWPVTEAEKKRWLAESL  
 RGPALDLMHIVQADNPISVVEECLEAFKQVFGSLESRRTAQVRYLKTYQEEGEKVSAYVLRLETLLRRAV  
 EKRAIPRRIADQVSLEQVMAGATLNQMLWCRLRELKDQGPSPFLLELMKVIREEEEEEASFENESIEEPE  
 ERDGYGRWNHEGDD

TRTRPLEQKLISEEDLAANDILDYKDDDDKV

**Chromatograms:** [https://cdn.origene.com/chromatograms/mg4195\\_d01.zip](https://cdn.origene.com/chromatograms/mg4195_d01.zip)

**Restriction Sites:** SgfI-MluI

**Cloning Scheme:**



**ACCN:** NM\_007257

**ORF Size:** 1092 bp

**OTI Disclaimer:** The molecular sequence of this clone aligns with the gene accession number as a point of reference only. However, individual transcript sequences of the same gene can differ through naturally occurring variations (e.g. polymorphisms), each with its own valid existence. This clone is substantially in agreement with the reference, but a complete review of all prevailing variants is recommended prior to use. [More info](#)

**OTI Annotation:** This clone was engineered to express the complete ORF with an expression tag. Expression varies depending on the nature of the gene.

**Components:** The ORF clone is ion-exchange column purified and shipped in a 2D barcoded Matrix tube containing 10ug of transfection-ready, dried plasmid DNA (reconstitute with 100 ul of water).

**Reconstitution Method:**

1. Centrifuge at 5,000xg for 5min.
2. Carefully open the tube and add 100ul of sterile water to dissolve the DNA.
3. Close the tube and incubate for 10 minutes at room temperature.
4. Briefly vortex the tube and then do a quick spin (less than 5000xg) to concentrate the liquid at the bottom.
5. Store the suspended plasmid at -20°C. The DNA is stable for at least one year from date of shipping when stored at -20°C.

**RefSeq:** [NM\\_007257.6](#)

**RefSeq Size:** 4788 bp

**RefSeq ORF:** 1095 bp

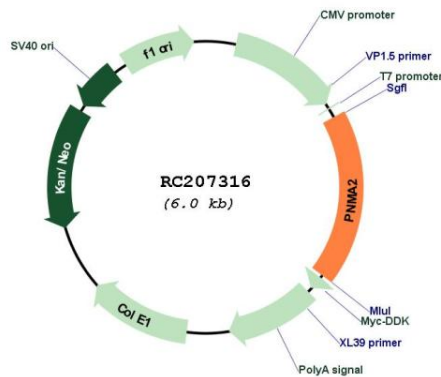
**Locus ID:** 10687

**UniProt ID:** [Q9UL42](#)

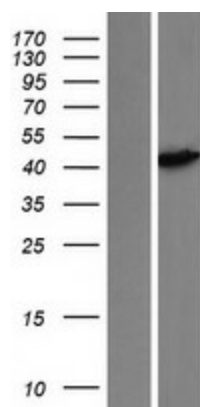
**Cytogenetics:** 8p21.2

**MW:** 41.3 kDa

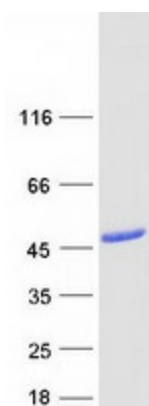
**Product images:**



Circular map for RC207316



Western blot validation of overexpression lysate (Cat# [LY416096]) using anti-DDK antibody (Cat# [TA50011-100]). Left: Cell lysates from untransfected HEK293T cells; Right: Cell lysates from HEK293T cells transfected with RC207316 using transfection reagent MegaTran 2.0 (Cat# [TT210002]).



Coomassie blue staining of purified PNMA2 protein (Cat# [TP307316]). The protein was produced from HEK293T cells transfected with PNMA2 cDNA clone (Cat# RC207316) using MegaTran 2.0 (Cat# [TT210002]).