

Product datasheet for RC207312

ANKRD15 (KANK1) (NM_153186) Human Tagged ORF Clone

Product data:

Product Type:	Expression Plasmids
Product Name:	ANKRD15 (KANK1) (NM_153186) Human Tagged ORF Clone
Tag:	Myc-DDK
Symbol:	ANKRD15
Synonyms:	ANKRD15; CPSQ2; KANK
Mammalian Cell Selection:	Neomycin
Vector:	pCMV6-Entry (PS100001)
E. coli Selection:	Kanamycin (25 ug/mL)
ORF Nucleotide Sequence:	>RC207312 representing NM_153186 Red=Cloning site Blue=ORF Green=Tags(s)

TTTTGTAATACGACTCACTATAGGGCGGCCGGAATTCGTCGACTGGATCCGGTACCGAGGAGATCTGCC
GCC**CGATCGCC**

ATGGAGACCCGGAGAAGACTGGAACAGGAGAGAGCCACCATGCAGATGACACCGGTGAGTTCAGAAGGC
CCAGGCTGGCCAGTTTTGGAGGCATGGGCACCACAAGCTCCCTCCCTCTTTTGTGGTCTGGAAACCA
CAATCCTGCCAAGCACCAGCTTCAGAATGGATACCAAGTAATGGGGATTATGGTAGCTATGCCCCAGCT
GCTCCCACCACTCCTCCATGGGAGCTCCATCCGCCACAGCCCCCTGAGCTCAGGGATCTCCACCCAG
TGACCAACGTGAGCCCCATGCACCTGCAGCACATCCGCGAGCAGATGGCCATTGCTCTGAAACGCCTGAA
GGAGCTGGAGGAGCAGGTGCGAACCATCCCTGTGCTCCAGGTAAGATCTCTGTCTTGAAGAAGAGAAA
AGGCAGTTGGTCTCACAGCTGAAAAACAAAGGGCTGCATCCCAGATCAATGTCTGTGGTGTGAGGAGGC
GGTCTATAGTGCGGGAACGCCTCCCAGCTGGAACAGCTCTCCCGGGCCGAAGAAGTGGCGGGGAATT
ATACATTGACTATGAGGAGGAAGAAAATGGAGACGGTAGAACAGAGCAGCAGAGGATAAAGGAGTCCGG
CAACTTACAGCAGACATGCAAGCCCTGGAGCAGAAGATCCAGGACAGCAGCTGTGAGGCCTCCTCAGAGC
TCAGGGAGAATGGAGAGTGCCGGTCTGTGGCTGTGGGTGCCGAGGAGAACATGAACGACATCGTCGTGTA
CCACAGAGGCTCCAGTCTGTAAAGGATGCAGCTGTAGGGACACTTGTTCAGATGAGAAAATTGTGGGTC
AGCGTGACAGAGGCCATGCTTGGAGTGATGACTGAAGCTGACAAAGAAATTGAGCTGCAACAGCAGACCA
TAGAATCCTTGAAGGAAAAGATCTATGGCCTAGAAGTACAGCTTAGAGAAAACCACCCATGACCGGGAGAT
GACTAAACTGAAACAAGAGCTGCAGGCTGCTGGATCGAGGAAAAAGGTTGACAAAGCCACGATGGCCAG
CCGCTTGTTCAGTAAGGTGGTGGAGGAGTGGTGCAGACCAGAGACCAATGGTCGGCAGTCACATGG
ACCTGGTGGACACGTGTGTTGGGACCTCCGTGAAACAAACAGTGTAGGCATCTCCTGCCAGCCTGAATG
TAAGAATAAAGTCGTAGGCCTGAGCTGCCTATGAATTGGTGGATTGTTAAGGAGAGGGTGGAAATGCAT
GACCGATGTGCTGGGAGTCTGTGAAAATGTGTGACAAGAGTGTGAGTGTGGAAGTCAGCGTCTGCGAAA
CAGGCAGCAACACAGAGGAGTCTGTGAATGACCTCACACTCCTCAAGACAAACTGAATCTCAAAGAAGT
GCGGTCTATCGTGTGGAGATTGTTCTGTTGACGTGACCGTCTGCTCTCAAAGGAGTGGCCCTCCCG



[View online »](#)

GCGTGAACTGAGGCTGTTAGCCAGGTGGAAGCTGCCGTCATGGCAGTGCCTCGTACTGCAGACCAGG
ACACTAGCACAGATTTGGAACAGGTGCACCAGTTCACCAACACCGAGACGGCCACCCTCATAGAGTCCTG
CACCAACTTGTCTAAGCACTTTGACAAGCAGACCAGCACCCAGACTGTGGAGACGCGGACAGTAGCT
GTAGGAGAAGGCCGTGTCAAGGACATCACTCCTCCACCAAGACGCGTCCATTGGTGTGGAACTTGC
TTTCTGGCCATTCTGGGTTTGACAGGCCATCAGCTGTGAAGACCAAGAGTCAGGTGTGGGCAGATAAA
TATTAACGACAATCTGGTTGGTCTCAAAATGAGGACTATAGCTTGTGGGCCACCACAGTTGACTGTG
GGGCTGACAGCCAGCAGAAGGAGCGTGGGGTTGGGATGACCCGTAGGGGAATCTCTGGAGAACCCCC
AGCCTCAAGTCCACTTGAATGATGACTGGCCTGGATCACTACATTGAGCGTATCCAGAAGCTGCTGGC
AGAACAGCAGACTGCTGGCTGAGAATACAGTGAAGTGGCAGAAGCTTTCGGGAACTCACTCACAG
ATGGGCTCCCTCAACTCTCAGCTCATCAGCACACTGTCGTCTATCAACTCTGTCATGAACTCTGCAAGCA
CTGAAGAGCTGAGGAACCCTGACTTCCAGAAAACCACTGCGGTAAAATCACAGGCAATTTGGGATA
TACCTGTAAGTGTGGGGCCTTCACTCAGGAAGTCCCTTAAGCTCCAGACATCCAGCCTGAGCAAGAA
GTGGGGACCTCAGAAGGAAAGCCATCAGCAGCCTGGATGCCCTCCCACTCAGGAAGGTACGCTGTCTC
CAGTGAACCTGACAGACGACCAGATCGCCGCTGGCCTCTATGCATGTACAAACAATGAAAGTACACTGAA
GTCCATCATGAAGAAGAAAGATGGTAACAAAGATTCAAATGGCGCAAAAAGAATCTTCAGTTTGTGGC
ATTAATGGAGGTATGAAACAATCAAGTGATGATTCCAGCTCAGATGAAAGCTTCTTCCGAGTCAG
ATGACGAGTGTGATGTCATTGAGTATCCTCTTGAAGAAGAGGAGGAGGAGGATGAAAGACTCGGGG
AATGGCAGAAGGGCACCATGCAGTTAATATTGAAGTTTGAAGTCTGCCAGGGTGAAGATGAAATGCAG
GTTCAAGAATGTGAACCTGAGAAGTGGAAATCAGAGAGAGGTATGAATTAAGTAAAAGATGTTGTCTG
CATGCACTTACTGAAAAATACTATAAATGACCCAAAGCTTTGACCAGCAAAGATATGAGGTTCTGTCT
GAACACCCTCCAGCACGAGTGGTCCGCGTGTCCAGTCAAGTCAAGTCCAGCATTCCAGCCATGGTGGGGAC
TACATAGCTGCTTTTGGGCCATTTCCCCAGATGTCTCCGCTATGTCATCAACTGGCAGACGGCAACG
GCAACACAGCCCTCCATTACAGCGTGTCCCACTCCAATTGAGATTGTGAAGTCTGTTAGATGCCGA
TGTGTGTAATGTGGATCACCAGAACAAGCAGGCTACACCCCATCATGTTGGCGGCCCTCGCCGCTGTG
GAAGCAGAGAAGGACATGCGGATTGTGGAAGAATCTTTGGCTGTGGGATGTGAATGCCAAAGCTAGTC
AGGCGGGACAGACGGCCCTCATGCTGGCGGTCACTCACGGACGGATAGACATGGTGAAGGGCCTTCTGGC
CTGTGGGGCTGATGTCAACATCCAGGATGACGAGGGCTCCACGGCCCTCATGTGTGCCAGCGACGCGGG
CACGTGGAGATTGTCAAGCTGCTGCTGGCCAGCCGGCTGCAACGGTCACTAGAGGACAACGATGGCA
GCACTGCGCTCTCAATCGCCCTGGAAGCAGGACACAAGGACATCGCTGTTCTTGTATGCCCATGTCAA
CTTTGAAAAGCCAGTCTCCGGCACCCCTAGGCTTGAAGGAAGACGCTCTCTGGCCCCACCCACCGA
GGTTCATTTGAT

ACGCGTACGCGGCCGCTCGAGCAGAACTCATCTCAGAAGAGGATCTGGCAGCAAATGATATCCTGGATT
ACAAGGATGACGACGATAAGGTTTAA

Protein Sequence: >RC207312 representing NM_153186
 Red=Cloning site Green=Tags(s)

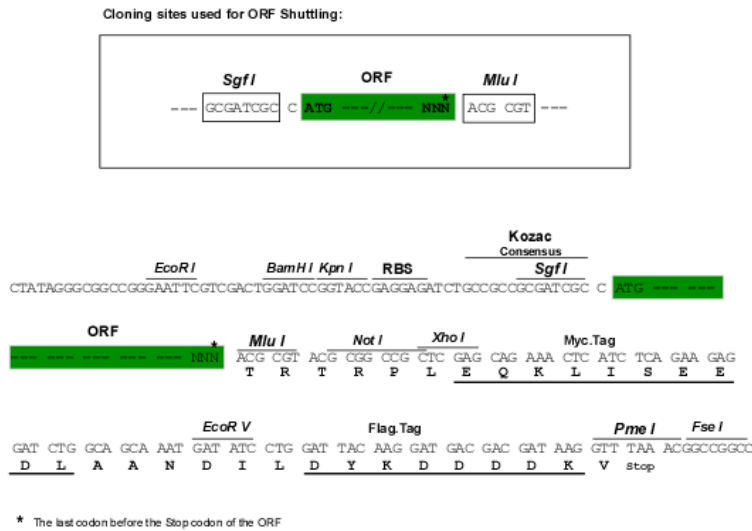
METRRRLERATMQMTPGFEFRRPRLASFGGMGTTSSLPSFVSGSNHNPAAKHLQNGYQNGDYGSYAPA
 APTTSSMGSSIRHSPLSSGI STPVTNVS PMHLQHIREQMAIALKRLKELEEQVRTIPVLQVKISVLQEEK
 RQLVSQLKNQRAASQINVCVRRRSYSAGNASQLEQLSRARRSGGELYIDYEEEEEMETVEQSTQRIKEFR
 QLTADMQALEQKIQDSSCEASSELRENGECRSVAVGAEENMNDIVVYHRGSRSCKDAAVGTLVQMRNCGV
 SVTEAMLGVMTEADKEIELQQQTIESLKEKIYGLEVQLRETTDREMTKLKQELQAAGSRKKVDKATMAQ
 PLVFSKVVEAVVQTRDQMGVSHMDLVDTCVGTSVETNSVGISQCPECKNKVVGPELPMNWWIVKERVEMH
 DRCAGRSVEMCDKSVSVEVSV CETGSNTEESVNDL TLLKTNLNLKEVRSIGCGDCSDVTV CSPKECASR
 GVNTEAVSQVEAAVMVPRADQDSTDLEQVHQFTNTEATLIESCTNTCLSTLDKQTSQTQVETRTVA
 VGEGRVKDINSSTKTRSIGVGTLLSGHSGFDRPSAVKTKESGVGQININDNYLVGLKMRTIACGPPQLTV
 GLTASRRSVGVGDDPVGESLENPQPQAPLGMGTGLDHYIERIQKLLAEQQTLLAENYSELAEAFGEPHSQ
 MGLSNQLISTLSSINSVMKSASTEELRNPDFQKTSLGKITGNLYGYTCKCGGLQSGSPLSSQTSQPEQE
 VGTSEGKPISSLDAPFTQEGT LSPVNL TDDQIAAGLYACTNNESTLKSIMKKKDGKND SNGAKKNLQFVG
 INGGYETTSSDDSSDESSESSEDDCEDVIEYPLEEEEEEEDEDTRGMAEGHHAVNIEGLKSARVEDEMQ
 VQECEPEKVEIRERYELSEKMLSACNLLKNTINDPKALTSKDMRFCLNTLQHEWFRVSSQKSAIPAMVGD
 YIAAFEAI SPDLRYVINLADGNGNTALHYSVSHSNFEIVKLLLDADVCNVDHQNKAGYTPIMLAALAAV
 EA EKDMRIVEELFGCGDVNAKASQAGQTALMLAVSHGRIDVMKGLLACGADVNIQDDEGSTALMCASEHG
 HVEIVKLLLAQPGCNGHLEDNDGSTALSIALEAGHKDIAVLLYAHVNF AKAQSPGTPRLGRKTS PGPTHR
 GSFD

TRTRPLEQKLISEEDLAANDILDYKDDDDKV

Chromatograms: https://cdn.origene.com/chromatograms/mg3932_d01.zip

Restriction Sites: SgfI-MluI

Cloning Scheme:

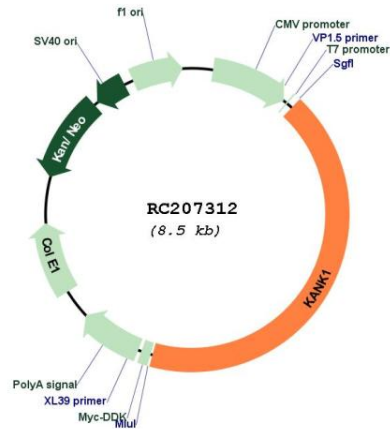


ACCN: NM_153186

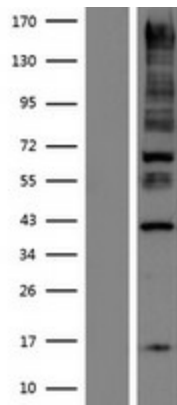
ORF Size: 3582 bp

OTI Disclaimer:	The molecular sequence of this clone aligns with the gene accession number as a point of reference only. However, individual transcript sequences of the same gene can differ through naturally occurring variations (e.g. polymorphisms), each with its own valid existence. This clone is substantially in agreement with the reference, but a complete review of all prevailing variants is recommended prior to use. More info
OTI Annotation:	This clone was engineered to express the complete ORF with an expression tag. Expression varies depending on the nature of the gene.
Components:	The ORF clone is ion-exchange column purified and shipped in a 2D barcoded Matrix tube containing 10ug of transfection-ready, dried plasmid DNA (reconstitute with 100 ul of water).
Reconstitution Method:	<ol style="list-style-type: none">1. Centrifuge at 5,000xg for 5min.2. Carefully open the tube and add 100ul of sterile water to dissolve the DNA.3. Close the tube and incubate for 10 minutes at room temperature.4. Briefly vortex the tube and then do a quick spin (less than 5000xg) to concentrate the liquid at the bottom.5. Store the suspended plasmid at -20°C. The DNA is stable for at least one year from date of shipping when stored at -20°C.
RefSeq:	NM_153186.5
RefSeq Size:	5263 bp
RefSeq ORF:	3585 bp
Locus ID:	23189
UniProt ID:	Q14678
Cytogenetics:	9p24.3
Domains:	ANK
MW:	129.6 kDa
Gene Summary:	The protein encoded by this gene belongs to the Kank family of proteins, which contain multiple ankyrin repeat domains. This family member functions in cytoskeleton formation by regulating actin polymerization. This gene is a candidate tumor suppressor for renal cell carcinoma. Mutations in this gene cause cerebral palsy spastic quadriplegic type 2, a central nervous system development disorder. A t(5;9) translocation results in fusion of the platelet-derived growth factor receptor beta gene (PDGFRB) on chromosome 5 with this gene in a myeloproliferative neoplasm featuring severe thrombocytopenia. Alternative splicing of this gene results in multiple transcript variants. A related pseudogene has been identified on chromosome 20. [provided by RefSeq, Dec 2014]

Product images:



Circular map for RC207312



Western blot validation of overexpression lysate (Cat# [LY407129]) using anti-DDK antibody (Cat# [TA50011-100]). Left: Cell lysates from untransfected HEK293T cells; Right: Cell lysates from HEK293T cells transfected with RC207312 using transfection reagent MegaTran 2.0 (Cat# [TT210002]).