

Product datasheet for RC207310

DDX60 (NM_017631) Human Tagged ORF Clone

Product data:

Product Type:	Expression Plasmids
Product Name:	DDX60 (NM_017631) Human Tagged ORF Clone
Tag:	Myc-DDK
Symbol:	DDX60
Mammalian Cell Selection:	Neomycin
Vector:	pCMV6-Entry (PS100001)
E. coli Selection:	Kanamycin (25 ug/mL)
ORF Nucleotide Sequence:	>RC207310 representing NM_017631 Red=Cloning site Blue=ORF Green=Tags(s)

TTTTGTAATACGACTCACTATAGGGCGGCCGGGAATTCGTCGACTGGATCCGGTACCGAGGAGATCTGCC
GCCCGATCGCC

ATGGAAAGAAATGTTCTTACAACATTTTCACAGGAAATGTCCCAGTTAATTTTGAATGAAATGCCAAAAG
CTGAATATTCCAGTTTATTCAATGATTTTGTGAACTGAAATTTTTTGGATTGATGGGGATTCACTACT
TATCACATGTATCTGTGAGATATCATTTAAGCCTGGGCAGAACCTCCATTCTTCTATCTGGTTGAACGC
TATCTTGTGGATCTTATTAGCAAAGGAGGACAATTCACCATAGTTTCTCAAGGATGCCGAGTATGCGT
ATTTCAACTCCCTGAACCTCTTTCTTTGAGAAGTCTTTAATTCTTCATCTTCAGAAGAATACCCAT
TGATGTTGCAACAACATTTTCGAGATGCTTATCAAAGAGTGGGGAAGTTTCTTGAAGAGAGTTACCCA
TATTTCTGATAGTTGCAGACGAAGCCTGAACGATCTACAAACACAGCTTTTCAACTTTTTAATCATT
ATCTTGGGCAAGGAAGTCAACGTTGACTTTCTCAGGGCAAGAATCTGATGTTCTTTCCTTTATGC
ATACCTTCTTCAAGCATGTACAGACACCAGATTTTTCTGGAAGAATAAGCAGAACATTAAGATGCT
TATACAACCTGCTTAACCAGTTGGAAGATTTAAGCTTTCAGCATTAGCACCTTTTTTGGAAAGTTTAA
AATGGAATAATATTACGGAAGAGGCACACAAGACTGTATCTCTGCTTACACAAGTCTGGCCAGAAGGATC
TGACATTCGGCGTGTCTTTGTGTTACTTCATGCTCATTATCTTGAAGATGTACCATCGCTTTTTAGGA
AACAGAGAGCCCTCCTCTGGTCAGGAACTGAGATCCAACAGGTGAACAGTAATTGCTTAACCTGCAGG
AGATGGAAGATTTGTGTAAGTGCATTGTCTCACTGTGGTTTTTCTACTCCATCTGCCTTTTCTCAAAG
AGCTTGTGCTAGAGTCATCACTTCACTTGGGCTGAGGACATGAAGCCTTTATTACAAATGAAAAAGTGG
TGTGAATATTTCACTTAAGAAATATACATACTTTTGAATTTTGGAACTGAATTTAATTCACCTTTCTG
ACTTAAATGATGAGCTTTTGTGGAAGAATATTGCTTTTACTATGAAAATGAAAATGAAAAGGCCTACA
TTTGAATTTGGGAGATACCATTATGAAAGATTATGAATATCTCTGGAATACCGTATCAAAGTTGGTCAGA
GACTTTGAGGTTGGACAGCCATTTCTCTGAGAACAACAAAAGTTTGGTTTTCTTGGAAAGAAACCATCAC
CAATCAAAGACAGCTCCAATGAAATGGTGCCCAATTTGGGTTTTATTCCAACGTCACTTTTGTGGTTGA
TAAATTTGCTGGAGATTTTTGAAAGATTTGCCTTTTCTAAAGAGTGATGATCCTATTGTTACTTCACTG
GTTAAACAAAAGGAATTTGATGAACTTGTGCACTGGCATTCTCATAAACCCTGAGTGATGATTATGACA
GGTCCAGGTGTCAGTTTGTGAAATCTAGAGACCCTCGTGTCTTAGATCTGTGCAAAAGTATCATGT



[View online »](#)

TTTCCAACGTTTTATGGGAATTCATTAGAAAACAGTCTCTTCGAAAATCATCGTGACTCAAACATTAAG
TCAAAGAAGGATTTAGTGGGCCCAAGAGCAAAAAGGCACACGAGACCAAGGCTGAAATAATTGCTAGAG
AGAATAAGAAAAGGTTATTTGCCAGGGAAGAACAAAAGGAAGAGCAAAAGTGGAATGCTTTGCTATTTTC
TATTGAAGAGCAATTGAAAGAAAATTTACACTCTGGAATAAAGAGCCTGGAAGATTTTTTAAATCCTGT
AAAAGTAGCTGTGTGAACTTCAGTTGAAATGGTGGGGTTAACTGCTTGCTTGAAGCCTGAAAGAAC
ATTGCCGAAGTGAAGAAGTAAAACCACGAAAGATTTAAGTATAGCTGTTACGGTATGAAAAGGATCCA
CTCCTTGATGAAAAAATACTCAGAATTTTACAAGAAGATGATCGGCAACTCATAGCCAGATGCCTTAAG
TATTTAGGATTTGATGAGTTGGCAAGTCTTTACATCCAGCCAGGATGCAGAAAATGATGTAAGTGA
AGAAAAGGAATAAATATTCAATTGGCATTGGGCCAGCTCGGTTCCAACGCAATACATGGGCCATTATTT
GATACGAGATGAGAGAAAAGACCCAGATCCCAGGGTCCAGGATTTTATCCCGACACATGGCAGCGAGAG
CTCCTTGATGTTGTGGATAAGAAAGAGTGCAGCAGTGATTGTTGCCCAACGTCCTCAGGCAAAACATATG
CCTCTACTACTGTATGGAGAAAGTGTGAAGGAGAGCGACGACGGGGTGGTCTGTACGTTGCACCCAC
AAAGGCCCTTGTAAATCAAGTGGCAGCAACTGTTCAGAATCGTTTTACGAAAAATCTGCCAAGTGGTGAA
GTTCTCTGTGGTGTTCACCAGGGAGTATCGTCATGATGCCTTAACTGTCAGGTACTTATTACAGTGC
CTGCCTGCTTTGAAATCTGCTGCTTGCTCCTCATCGCCAAAACGGGTGAAAAAGATCAGATATGTTAT
ATTTGATGAGGTTCAATTGCTTGGTGGAGAAAATGGAGCAGAAAATCTGGGAACATCTCCTTGTCTATGATC
CGATGTCCCTTTTTGGCTCTTTCAGCTACCATAAGTAATCCTGAACATCTCACCGAGTGGCTACAATCGG
TAAAATGGTACTGGAAACAAGAAGACAAAATAATTGAAAATAATACCGCTTCTAAAAGACATGTGGGTGCG
TCAGGCCGGCTTTCCCAAAGACTACTTGAAGTAAAACAATCGTATAAAGTTAGACTTGTGCTCTATGGA
GAGAGGTATAATGATCTAGAGAAGCATGTATGTTCAATAAAACATGGTGACATTCATTTTGTATTTTC
ACCCATGTGCTGCACTAACACAGATCATATTGAAAGGTATGGATTCCCTCCTGATCTTACCCTTTCACC
TCGAGAAAGCATCCAGCTGTATGATGCCATGTTTCAAATTTGGAAAAGTGGCCTCGGGCCAGGAACCTG
TGCCAGAAAACCTCATTCAATTTAACAATAAATAGTCATTAAGAAAGATGGATGCTAGGAAATATGAAG
AGAGTCTAAAGGCAGAAATTAACAAGTTGGATTAATAAATGGCAACGTAGAGCAGGCCAGAATGGTACTTCA
GAATCTTAGTCCCTGAAGCAGATTTGAGTCCAGAAAACATGATCACCATGTTTCCACTTCTAGTTGAAAAA
CTAAGGAAAATGGAGAAGTTACCTGCACTATTTTTTTTATTCAAGTTAGGAGCTGTAGAAAACGCAGCTG
AAAGTGTGAGCACTTTCCCTAAAGAAAAGCAGGAGACAAAAGGCCTCCCAAAGCTGATAAAGAAGCCCA
TGTCATGGCTAACAACTTCGAAAAGTTAAAAATCCATAGAGAAAACAAAAGATCATAGATGAAAAGAGC
CAGAAAAAACCCAGAAAATGGGATCAAAGCCTAATACATGAAGCTGAACATGATAATCTAGTGAAGTGC
TAGAGAAGAACCTGGAATCCCACAGGACTGCACATATGCTGATCAAAAAGCAGTGGACACTGAGACTTT
GCAGAAGTATTTGGTCGAGTAAAATTTGAAAGAAAAGGTGAAGAATTGAAAGCCTTGGCAGAAAGGGGT
ATTTGGATATCATCACAGTGTATGAGTTTCAAAGAAAACAATTAGTTGAAATCCTCTTTAGAAAAGGAT
ATCTTAGGGTGGTGACAGCTACTGGAACACTTGCTTTAGGTGTCAACATGCCTTGTAAATCTGTGTTTTT
TGCTCAAAACTCAGTCTATCTGGATGCGTTGAATTATAGACAGATGTCTGGCCGTGCTGGAAGAAGAGGT
CAAGACCTGATGGGAGATGTATATTTCTTTGATATTCCATTCCCAAAAATAGGAAAACATAAAATCCA
ATGTTCTGAGCTGAGAGGACACTTCCCTCTCAGCATAACCCTGGTCTGCGACTCATGCTGCTGGCTTC
CAAGGGAGATGACCCAGAGGATACCAAGGCAAAGGTGCTATCAGTGTAAAGCATTATTGCTGTCTTTC
AAGCAACCCAGAGTCATGGACATGTTAAAACCTTACTTCTGTTTTCTTGCAGTTCCTGGTGAAGAGG
GCTATTTAGATCAAGAAGGTAATCCTATGGGGTTTGTGGACTTGATCACATTTGCATTATCATGAACC
TTCTAATCTTGTTTTTGTGAGTTTTCTTGTAAATGGACTTCCATGATCTCTGTGAGCCAAACAGGAAA
GGCTCAAAACATTTTTCTCAAGACGTTATGAAAAGCTAGTATTAGTATTGGCACATCTCTTTGGAAAGAA
GATATTTTCCACCAAAGTTCCAAGATGCACACTTCGAGTTTTATCAATCAAAGGTGTTCTTGTATGATCT
CCCTGAGGATTTTAGTGATGCTTTAGATGAATATAACATGAAAATATGGAGGACTTTACCCTTTCCTA
CGAATTGTTTTCAAACCTGGCTGATATGAATCAGGAATATCAACTCCATTGTCAAAAATCAAATTCACAG
GTAAGAATGTGAAGACTCTCAACTCGTATCTCATTGATGAGCTGCAAGGAAGGAAGAGTAGCAATTTTC
ACCATTTGTTGTCTGTCTGGAACTTTGATGATGATTTGCTTCGACTAGAACTCCAAACCATGTTACT
CTAGGCACAATCGGTGTCAATCGCTCTCAGGCTCCAGTGTGTTGTCACAGAAAATTTGATAACCGAGGAA
GGAAAATGTCGCTTAATGCCTATGCACTGGATTTCTACAACATGGTTCCCTTGTATAGGATTAGTCCAGGA
TAACAGGATGAATGAAGGAGATGCTTATTTGTTGAAGGATTTGCACTCACCATTAATCTATCAGT
GTTTCTTGTGCTGAGCTATGTGAAAATGAAGACGACAACGTTGTCTTAGCCTTTGAAACAACCTGAGTACAA
CTTTTTGGGAAAAGTTAAACAAAGTC

ACGCGTACGCGGCCGCTCGAGCAGAAACTCATCTCAGAAGAGGATCTGGCAGCAAATGATATCCTGGATT
ACAAGGATGACGACGATAAGGTTTAA

Protein Sequence:

>RC207310 representing NM_017631
Red=Cloning site Green=Tags(s)

MERNVLTTFSQEMSQLILNEMPKAEYSSLFNDFVESEFFLIDGDSLLITCICEISFKPGQNLHFFYLVER
YLVDLISKGGQFTIVFFKDAEYAYFNPELLSLRTALILHLQKNTTIDVRTTFSRCLSKEWGSFLEESYP
YFLIVADEGLNDLQTLFNFLIIHSHWARKVNVVLSGQESDVLCYAYLLPSMYRHQIFSWKNKQNIKDA
YTTLLNQLERFKLSALAPLFGSLKWNNTIEEAHKTVSLLTQVWPEGSDIRRVFCVTSCLSLRMYHRFLG
NREPSSSQETEIQVNSNCLTLQEMEDLCKLHCLTVVFLHLPLSQRACARVITSHWAEDMKPLLQMKKW
CEYFILRNIHTFEFWNLNLIHLSLDNDELLLNIAFYENENVKGLHLNLGDTIMKDYEYLWNTVSKLVR
DFEVGQPFPLRRTTKVCFLGKKPSPIKSSNEMVPLNLF IPTSSFVVDKFAGDILKDLPLFKSDDPIVTSL
VKQKDFDELVHWHSHKPLSDDYDRSRCQFDEKSRDPRVLRVQKYHVVFQRFYGNSETVSSKIIIVTQTIK
SKKDFSGPKSKKAHETKAEIIARENKKRLFAREEQKEEQKWNALSF SIEEQLKENLHSGIKSLEDFLKSC
KSSCVKLVQEMVGLTACLKAWKEHCRSEEGKTTKDL SIAVQVMKRIHSLMEKSELLQEDDRQLIARCLK
YLGFDLASSLHPAQDAENDVKVKKRNKYSIGIGPARFQLQYMGHYLIRDERKDPDRVQDFIPDWTQRE
LLDVVDKNESAVIVAPTSSGKTYASYCMEKVLKESDDGVVVVYVAPTALVNQVAATVQNRFTKNLPSGE
VLCGVFTREYRHDALNCQVLTVPACFEILLAPHRQNWKKIRYVIFDEVHCLGGEIGAEIWEHLLVMI
RCPFLALSATISNPEHLTEWLQSVKWKYKQEDKIIENNTASKRHVGRQAGFPKDYLVQVQSYKVRVLVYG
ERYNDLEKHVCSIKHGDIFHDFHPCAALTTDHIERYGFPDDLTLSPRESIQLYDAMFQIWKSWPRAQEL
CPENFIHFNNKLVIKKMDARKYEEESLKAELTSWIKNGNVEQARMVLQNLSPREADLSPENMITMFPPLLVEK
LRKMEKLPALFFLFKLGAVENAAESVSTFLKKKQETKRPPKADKEAHVMANKLRKVKKSIEKQKIIDESK
QKTRNVQDQSLIHEAEHNLVKCLEKNLEIPQDCTYADQKAVDTE TLQKVFGRVKFERKGEELKALAERG
IGYHHSAMSFKEKQLVEILFRKGYLRVVTATGTLALGVNMPCKSVVFAQNSVYLDALNYRQMSGRAGRRG
QDLMGDVYFFDIPFPKIGKLIKSNPELRGHFPLSITLVLRLMLLASKGDDPEDTKAKVLSVLKHSLLSF
KQPRVMDMLKLYFLFSLQFLVKEGYLDQEGNPMGFAGLVSHLHYHEPSNLVVFVSLVNLGFDLFCQPTRK
GSKHFSQDVMEKLVVLVLAHLFGRRYFPPKFQDAHFEEFYQSKVFLDDLPEDFSDALDEYNMIMEDFTTFL
RIVSKLADMNQEQYQLPLSKIKFTGKECEDSQLVSHLMSCKEGRVAISPFVCLSGNFDDDLLRLETPNHVT
LGTIGVNRSQAPVLLSQKFDNRGRKMSLNAYALDFYKHGSLIGLVQDNRMNEGDAYLLKDFALTIKISIS
VSLRELCEENDDNVVLAFEQLSTTFWEKLNKV

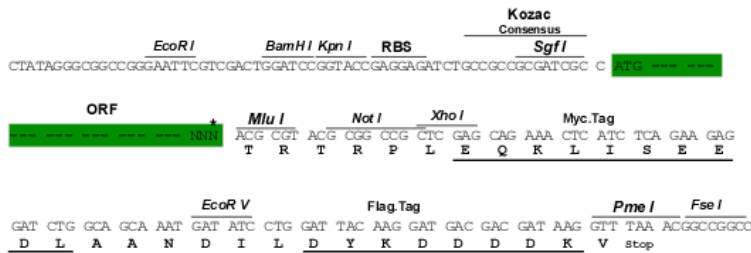
TRTRPLEQKLISEEDLAANDILDYKDDDDKV

Restriction Sites:

SgfI-MluI

Cloning Scheme:

Cloning sites used for ORF Shuttling:



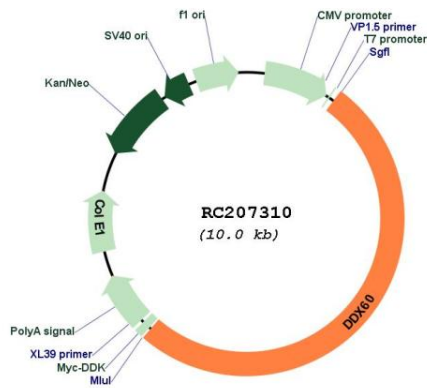
* The last codon before the Stop codon of the ORF

ACCN:	NM_017631
ORF Size:	5136 bp
OTI Disclaimer:	<p>Due to the inherent nature of this plasmid, standard methods to replicate additional amounts of DNA in E. coli are highly likely to result in mutations and/or rearrangements. Therefore, OriGene does not guarantee the capability to replicate this plasmid DNA. Additional amounts of DNA can be purchased from OriGene with batch-specific, full-sequence verification at a reduced cost. Please contact our customer care team at custsupport@origene.com or by calling 301.340.3188 option 3 for pricing and delivery.</p> <p>The molecular sequence of this clone aligns with the gene accession number as a point of reference only. However, individual transcript sequences of the same gene can differ through naturally occurring variations (e.g. polymorphisms), each with its own valid existence. This clone is substantially in agreement with the reference, but a complete review of all prevailing variants is recommended prior to use. More info</p>
OTI Annotation:	This clone was engineered to express the complete ORF with an expression tag. Expression varies depending on the nature of the gene.
Components:	The ORF clone is ion-exchange column purified and shipped in a 2D barcoded Matrix tube containing 10ug of transfection-ready, dried plasmid DNA (reconstitute with 100 ul of water).
Reconstitution Method:	<ol style="list-style-type: none">1. Centrifuge at 5,000xg for 5min.2. Carefully open the tube and add 100ul of sterile water to dissolve the DNA.3. Close the tube and incubate for 10 minutes at room temperature.4. Briefly vortex the tube and then do a quick spin (less than 5000xg) to concentrate the liquid at the bottom.5. Store the suspended plasmid at -20°C. The DNA is stable for at least one year from date of shipping when stored at -20°C.

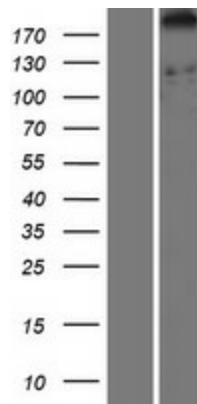
RefSeq: [NM_017631.4](#)
RefSeq Size: 6031 bp
RefSeq ORF: 5139 bp
Locus ID: 55601
UniProt ID: [Q8IY21](#)
Cytogenetics: 4q32.3
MW: 197.7 kDa

Gene Summary: DEAD box proteins, characterized by the conserved motif Asp-Glu-Ala-Asp (DEAD), are putative RNA helicases which are implicated in a number of cellular processes involving RNA binding and alteration of RNA secondary structure. This gene encodes a DEXD/H box RNA helicase that functions as an antiviral factor and promotes RIG-I-like receptor-mediated signaling. [provided by RefSeq, Apr 2017]

Product images:



Circular map for RC207310



Western blot validation of overexpression lysate (Cat# [LY413632]) using anti-DDK antibody (Cat# [TA50011-100]). Left: Cell lysates from untransfected HEK293T cells; Right: Cell lysates from HEK293T cells transfected with RC207310 using transfection reagent MegaTran 2.0 (Cat# [TT210002]).