

Product datasheet for RC207306

LCORL (NM_153686) Human Tagged ORF Clone

Product data:

Product Type:	Expression Plasmids
Product Name:	LCORL (NM_153686) Human Tagged ORF Clone
Tag:	Myc-DDK
Symbol:	LCORL
Synonyms:	MLR1
Mammalian Cell Selection:	Neomycin
Vector:	pCMV6-Entry (PS100001)
E. coli Selection:	Kanamycin (25 ug/mL)
ORF Nucleotide Sequence:	>RC207306 ORF sequence Red=Cloning site Blue=ORF Green=Tags(s)

TTTTGTAATACGACTCACTATAGGGCGGCCGGGAATTCGTCGACTGGATCCGGTACCGAGGAGATCTGCC
GCC**CGATCGCC**

ATGGACAAGGGAAGAGAGAGAATGGCCGCTGCCGCCGCCGCTGCTGCCGCCGCCGCCGCCGCTCAGT
GCCGGAGCCCTCGGTGCGCGCGGAGAGAAGAGGATTCGGCGGGAACTCGACTTTGGCGCCACCGCCT
CATGCACTGTGTAGGTTTGTAGAGTATTTAGAAAGGGCTTATGGACCACGGCTACGAAGAGACCTCAGT
TTATTTGAAGACTGTGAACCAGAAGAGCTGACTGACTGGTCTATGGATGAAAAATGTTTCATTTTGAACC
TACAGAGAGAAGCAGTCAGTGATTGTATACCATCTCTTGATTCTTACAGTCAACACCAACAGAGGAGCT
ATCATCTCAGGGCCAGTCCAACACTGATAAGATTGAATGCCAAGCAGAAAATTACCTAAATGCACCTTTT
CGAAAGAAAGATCTTCTCAGAAGTGTATCCTAACATTCCTAGTTGCTCAGGAATTAATGAAAAAGA
TGATACGTCAATTTGCGATTGAGTACATTTCAAAAAGTGGTAAAACCAAGAGAATAGAAATGGTTCAAT
TGGACCAAGTATAGTATGTAAAAGTATCCAAATGAATCAAGCAGAAAACCTCCCTCAGGAAGAGCAGGAA
GGCCCTTAGACCTCACTGTGAATCGAATGCAAGAACAAAATACTCAGCAAGGGGATGGAGTGTTAGATC
TCTTACAAAAGAAAACCAGCATAAAAATCTGAAGAGTCAATCATATGTGATCCTTCTTCTGAAAATTCAGT
GGCTGGCATGCTACAAGTAAAACCTGATGAGAACTGAATGTGTCTGATGAGAATACAGCAAGTTGCCCT
TTGAGCCCCATTAAGATGTGCCTTAATCGTCCCATTGAATGGAATCTGAATTTGACAACAGCATCTCTAA
CGAGCTGTACAGTTCATAACCAAAATCTCAAAAGCGAAGAGAAA

ACGCGTACGCGGCCGCTCGAGCAGAAAACCTCATCTCAGAAGAGGATCTGGCAGCAAATGATATCCTGGATT
ACAAGGATGACGACGATAAGGTTTAA



[View online »](#)

Protein Sequence: >RC207306 protein sequence
Red=Cloning site Green=Tags(s)

MDKGRERMAAAAAAAAAAAAAQCRSPRCAAERRGFRELD~~SWR~~HRLMHCVGFESILEGLYGPRLRRDLS
 LFEDCEPEELTDWSMDEKCSFCNLQREAVSDCIPSLDSSQSTPTEELSSQGQSN~~TDK~~IECQAENYLNALF
 RKKDL~~PQ~~NCDPNIPLVAQELMKMIRQFAIEYISKSGKTQENRNGSIGPSIVCKSIQMNQAENSLQEEQE
 GPLDLTVNRMQE~~QNT~~QQGDGVL~~DL~~STK~~TS~~IKSEESSICDPSSENS~~VAG~~MLQVK~~TDE~~KLNVSDENTASCP
 LSP~~IK~~MCLNRP~~IE~~WN~~LN~~LTASL~~TS~~CTVHNQNLKSEEK

TRTRPLEQKLISEEDLAANDILDYKDDDDKV

Chromatograms: https://cdn.origene.com/chromatograms/mk6135_d05.zip

Restriction Sites: SgfI-MluI

Cloning Scheme:

Cloning sites used for ORF Shuttling:



* The last codon before the Stop codon of the ORF

ACCN: NM_153686

ORF Size: 954 bp

OTI Disclaimer: The molecular sequence of this clone aligns with the gene accession number as a point of reference only. However, individual transcript sequences of the same gene can differ through naturally occurring variations (e.g. polymorphisms), each with its own valid existence. This clone is substantially in agreement with the reference, but a complete review of all prevailing variants is recommended prior to use. [More info](#)

OTI Annotation: This clone was engineered to express the complete ORF with an expression tag. Expression varies depending on the nature of the gene.

Components: The ORF clone is ion-exchange column purified and shipped in a 2D barcoded Matrix tube containing 10ug of transfection-ready, dried plasmid DNA (reconstitute with 100 ul of water).

Reconstitution Method:

1. Centrifuge at 5,000xg for 5min.
2. Carefully open the tube and add 100ul of sterile water to dissolve the DNA.
3. Close the tube and incubate for 10 minutes at room temperature.
4. Briefly vortex the tube and then do a quick spin (less than 5000xg) to concentrate the liquid at the bottom.
5. Store the suspended plasmid at -20°C. The DNA is stable for at least one year from date of shipping when stored at -20°C.

RefSeq: [NM_153686.8](#), [NP_710153.2](#)

RefSeq Size: 3577 bp

RefSeq ORF: 957 bp

Locus ID: 254251

UniProt ID: [Q8N3X6](#)

Cytogenetics: 4p15.31

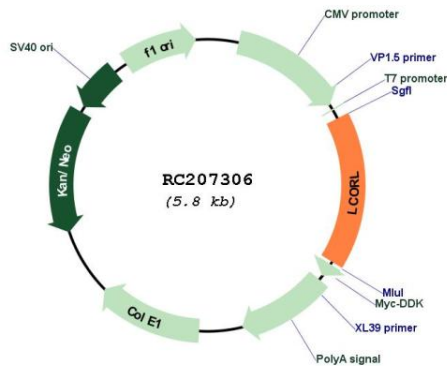
Domains: HTH_psq

Protein Families: Transcription Factors

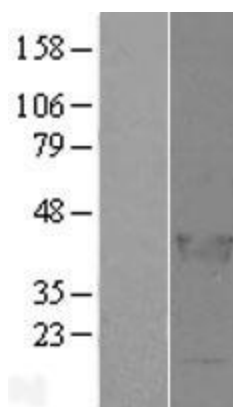
MW: 35.4 kDa

Gene Summary: This gene encodes a transcription factor that appears to function in spermatogenesis. Polymorphisms in this gene are associated with measures of skeletal frame size and adult height. Alternative splicing results in multiple transcript variants. [provided by RefSeq, Oct 2009]

Product images:



Circular map for RC207306



Western blot validation of overexpression lysate (Cat# [LY403518]) using anti-DDK antibody (Cat# [TA50011-100]). Left: Cell lysates from untransfected HEK293T cells; Right: Cell lysates from HEK293T cells transfected with RC207306 using transfection reagent MegaTran 2.0 (Cat# [TT210002]).