

Product datasheet for **RC207305**

SMYD4 (NM_052928) Human Tagged ORF Clone

Product data:

Product Type:	Expression Plasmids
Product Name:	SMYD4 (NM_052928) Human Tagged ORF Clone
Tag:	Myc-DDK
Symbol:	SMYD4
Synonyms:	ZMYND21
Mammalian Cell Selection:	Neomycin
Vector:	pCMV6-Entry (PS100001)
E. coli Selection:	Kanamycin (25 ug/mL)



[View online »](#)

**ORF Nucleotide
Sequence:**

>RC207305 ORF sequence
 Red=Cloning site Blue=ORF Green=Tags(s)

TTTTGTAATACGACTCACTATAGGGCGGCCGGAATTCGTCGACTGGATCCGGTACCGAGGAGATCTGCC
 GCC**CGCATCGCC**

ATGGATCTGCCTGTGGATGAGTGAAATCATATCTGCTTCAAAGTGGGCTTCACTCCCGACGTCTGTTC
 AGGTCACAATTTCTACAGCAGAGACCTTGAGGGATATCTTTCTTCACTCCTTCACTTCTTCAACCTGA
 GGATGAGCTGTTTCTAAAAAGACTTTCTAAAGGTTACTTGGTGGGAAAGGACTCGGACGCTCCTCTTTTC
 TACAGAGAAGAAGGAAACAAAAATTTCAAGGAAAGATTACACAGGAGCTGCAGTGCTGTACTCTAAGG
 GAGTGTACATTCAAGGCCTAACACTGAGGACATGTCAGTGTGCATGCTAACCGCTCGGACGCCCTCTT
 CCACCTGGGTGAGTATGAGACGTGCTTAAAGACATTAACATAGCACAGACACATGGGTATCCAGAAAGG
 TTGCAACCAAGATTATGTTACGTAAGCAGAATGTCTGGTGGCCCTGGGAGACTGCAGGAGGCAAGCC
 AGACCATCAGTGATCTTAAAGGAACCTCACAGCCACACCAGCCCTAGCAGATGCTCTCCCTCAGACTCT
 GCAGAGAAACCTCCATCGTCTGAAAATGAAGATGCAAGAAAAGGACAGTCTCACAGAAAGCTTCCAGCA
 GCTCTGGCCAAAACCTTGAGGATGCAGCGCTGAGGGAGGAGAATGAACAACCTTTCCAATGCCTCATCAT
 CCATCGGCTTATGCGTAGATCCTTTAAAAGGTCGCTGTCTCGTTGCCACAAAAGATATTCTCCAGGAGA
 GCTCCTGGTGCAGGAGGATGCTTTGTGAGTGTCTCAACCCAGGAGAAGTCCACCACCGCATCACGGC
 CTAGACAGCAATGGGACACCAGAGTCACCAATGGGGACCTCTATTGTCACCGATGTTTGAAGCACACTT
 TGGCCACAGTTCGCTGTGACGGATGCAGTTATGCCAAGTATTGCAGCCAGGAGTGTTCAGCAGGCTGTG
 GGAGCTTACCACAGGACAGAAATGTCCTCTGGGAGGGCTGCTTCTCACTGGGTGTCTTTGCCACATT
 GCCCTGAGGTGACTCTTTTGGTGGGATTTGAGGATGTTGCGAAAATCATAACGAAGCTTTGTGATAAGA
 TTAGTAACAAGGACATCTGTTTACCTGAAAGCAACAATCAGGTCAAGACACTTAATTATGGCCTAGGGGA
 GAGTGAGAAAAATGGCAACATCGTTGAGACCCCAATTCTGGATGCGATATTAATGGGAAGTATGAAAAT
 AATTATAATGCTGTCTTCAACCTTTTGGCCCACTGAAAACCATAGCCAGAGCACAAATTCCTCTGTG
 CTCTCTGTGTTTCTGCACTGTGCAGACAGCTAGAAGCAGCCAGTTTACAGGCCATCCCAACTGAGAGGAT
 TGTGAACTCCTCTCAGCTTAAAGCAGCAGTGACACCTGAATTGTCTGACGTGACTATTTGGGGAGTG
 GCGATGCTGAGACACATGTTACAGCTTCAAGTGAACGCTCAGGCGATGACCACCATAACAACACAGGAC
 CTAAGGGAGCATCGTTACCGACAGCAGGAGGTGCGCCTTGCCACAGGCATCTTCCCTGTTATCAGCCT
 CCTGAACCACTCCTGTAGCCCAACACCAGCGTGTCTTATTAGCACTGTGCCACCATCCGGGCGTCA
 CAGCGGATTAGAAAGGGCAAGAGATTCTCCACTGCTATGGGCCACAAAGAGCCGGATGGGGGTTGCCG
 AAAGGCAGCAGAAGCTGAGGTCTCAGTATTTCTTTGACTGCGCCTGTCCAGCTTGTCAAACCTGAGGCACA
 CAGGATGGCTGCAGGGCCAGGTGGGAAGCATTCTGTTGCAACAGTTGCGGAGCGCCATGCAGGGAGAT
 GACGTGCTGCGCTGTGGCAGCAGATCTTGTGCAGAATCCGCCGTGAGCAGGGACCACCTGGTCTCTCGGT
 TACAGGACCTACAGCAGCAGGTGAGTGGCCAGAAGCTTCTCAGAGATGGTGAAGTAGAGCGAGCTGT
 TCAGCGGCTGTGCGGGTGCCAGCGTGACGCCGAGAGCTTCTGTGGGCAGAGCACGCCGTGGTGGGAGAG
 ATCGCGGATGGCCTGGCCCGGCTGTGCTGCCTTAGGAGACTGGCAAAGTCAAGCCACCATCTACAGA
 GGAGTCTCTGCGTGGTGGAGTTGCGCCAGGGCCGTCCAGTGTGAAATGGGCCATGAGCTCTTCAAATT
 GGCCAGATCTTTTCAACGGTTTGCAGTACCGAAGCCCTGAGCACAATACAGAAAGCTGAGGAGGTT
 CTGTCGCTGCACTGTGGCCATGGGACGATGAAATCCAGGAGCTCCAGAAGATGAAATCCTGTTTGTGG
 ACTTACCACCCACCCCTGTAGGGCTGCATTG

ACGCGTACGCGGCCGCTCGAGCAGAACTCATCTCAGAAGAGGATCTGGCAGCAATGATATCCTGGATT
 ACAAGGATGACGACGATAAGGTTTAA

Protein Sequence: >RC207305 protein sequence
Red=Cloning site Green=Tags(s)

MDLPVDEWKS YLLQK WASLPTS SVQVTISTAETLRDIFLHSSSLLQPEDEFLKRLSKGYLVGKSDAPLF
YREGNKKFQEKDYTGAAVLYSKGVSHSRPNTEDMSLCHANRSAALFHLGQYETCLKDINIAQTHGYPER
LQPKIMLRKA ECLVALGR LQEASQTI SDLERNFTATPALADVLPQTLQRNLHRLKMKMQEKDSLTESFPA
ALAKTLEDAALREENEQLSNASSSIGLCVDPLKGRCLVATKDILPGELLVQEDAFVSVLNPGE LPPPHHG
LDSKWDTRVTNGDLYCHRCLKHTLATVPCDGC SYAKYCSQECLQQWEL YHRTECP LGLLLLTLGVFCHI
ALRLTLLVGFEDVRKIITKLCDKISNKD ICLPESNNQVKTLNYGLGESEKNGNIVETPIPGCDINGKYEN
NYNAVFNLLPHTENHSPEHKFLCALCVSALCRQLEAASLQAIPTE RIVNSSQLKAAVTPELCPDVTIWGV
AMLRHMLQLQCNAQAMTTIQHTGPKGSI VTD SRQVRLATGIFPVISLLNHSCSPNTSVSFISTVATIRAS
QRIRKGQEILHCYGPHKSRMGVAERQQK LRSQYFFDCACPACQTEAHRMAAGPRWEAFCCNSCGAPMQGD
DVLRCGSRSCAESAVSRDHLVSRLQDLQQQVRVAQKLLRDGELERAVQRLSGCQRDAESFLWAEHAVVGE
IADGLARACAALGDWQKSATHLQRSLCVVEVRHGPSSVEMGHELFKLAQIFFNGFAVPEALSTIQKAEV
LSLHCGPWDEIQELQKMKSCLLDLPPTVGPAL

TRTRPLEQKLISEEDLAANDILDYKDDDDKV

Chromatograms: https://cdn.origene.com/chromatograms/mk6321_f11.zip

Restriction Sites: Sgfl-Mlul

Cloning Scheme:



ACCN: NM_052928

ORF Size: 2412 bp

OTI Disclaimer: The molecular sequence of this clone aligns with the gene accession number as a point of reference only. However, individual transcript sequences of the same gene can differ through naturally occurring variations (e.g. polymorphisms), each with its own valid existence. This clone is substantially in agreement with the reference, but a complete review of all prevailing variants is recommended prior to use. [More info](#)

OTI Annotation: This clone was engineered to express the complete ORF with an expression tag. Expression varies depending on the nature of the gene.

Components: The ORF clone is ion-exchange column purified and shipped in a 2D barcoded Matrix tube containing 10ug of transfection-ready, dried plasmid DNA (reconstitute with 100 ul of water).

Reconstitution Method:

1. Centrifuge at 5,000xg for 5min.
2. Carefully open the tube and add 100ul of sterile water to dissolve the DNA.
3. Close the tube and incubate for 10 minutes at room temperature.
4. Briefly vortex the tube and then do a quick spin (less than 5000xg) to concentrate the liquid at the bottom.
5. Store the suspended plasmid at -20°C. The DNA is stable for at least one year from date of shipping when stored at -20°C.

Note: Plasmids are not sterile. For experiments where strict sterility is required, filtration with 0.22um filter is required.

RefSeq: [NM_052928.1](#), [NP_443160.1](#)

RefSeq Size: 4349 bp

RefSeq ORF: 2415 bp

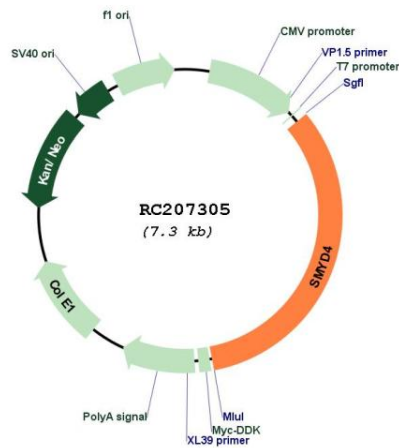
Locus ID: 114826

UniProt ID: [Q8IYR2](#)

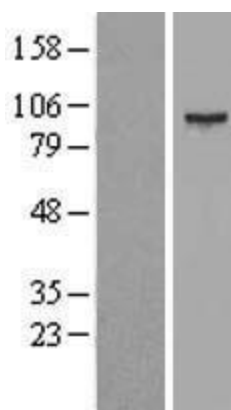
Cytogenetics: 17p13.3

MW: 89.2 kDa

Product images:



Circular map for RC207305



Western blot validation of overexpression lysate (Cat# [LY409386]) using anti-DDK antibody (Cat# [TA50011-100]). Left: Cell lysates from untransfected HEK293T cells; Right: Cell lysates from HEK293T cells transfected with RC207305 using transfection reagent MegaTran 2.0 (Cat# [TT210002]).



Coomassie blue staining of purified SMYD4 protein (Cat# [TP307305]). The protein was produced from HEK293T cells transfected with SMYD4 cDNA clone (Cat# RC207305) using MegaTran 2.0 (Cat# [TT210002]).