

Product datasheet for RC207303

PLCL2 (NM_015184) Human Tagged ORF Clone

Product data:

Product Type:	Expression Plasmids
Product Name:	PLCL2 (NM_015184) Human Tagged ORF Clone
Tag:	Myc-DDK
Symbol:	PLCL2
Synonyms:	PLCE2
Mammalian Cell Selection:	Neomycin
Vector:	pCMV6-Entry (PS100001)
E. coli Selection:	Kanamycin (25 ug/mL)
ORF Nucleotide Sequence:	>RC207303 ORF sequence Red=Cloning site Blue=ORF Green=Tags(s)

TTTTGTAATACGACTCACTATAGGGCGCCGGGAATTCGTCGACTGGATCCGGTACCGAGGAGATCTGCC
GCC**CGATCGCC**

ATGCCAACAGAGAAGAAGATCAGCAGTGAAGTATTGTATTAATCAATGGTTGAGGGTTCAGAACTCA
AAAAGGTTTCGCTCCAACCTAGAAATTTATCATAGGTACTTTTTACTGGATGCTGACATGCAGAGCCTAAG
GTGGGAGCCATCTAAGAAGGATTCTGAGAAAGCCAAGATTGACATTAATCCATCAAGGAAGTGAGAACA
GGAAAAACACAGACATATTCGCGAGCAATGGCATTCTGACCGGATATCTGAAGATTGTGCGTTTTCCG
TCATATATGGAGAGAATTATGAGTCACTGGATTTGGTTGCCAACTCCGAGATGTTGCAAACATCTGGGT
TACAGGACTGCGGTACCTAATTTCTTATGAAAAACATACACTTGATATGTTAGAAAGTAGCCAAGATAAC
ATGAGGACTTCTTGGGTTTCACAAATGTTTAGTGAAATGATGTAGATAACCTTGGACATATAACTCTGT
GTAATGCTGTGCAATGTATCAGAAACCTCAATCCTGGTTTAAAAACGAGCAAAATGAGCTTAAGTTCAA
AGAATTGCATAAATCAAAGGACAAAGCTGGTACCGAGGTCACAAAGGAAGAATTTATTGAGGTTTTTCAT
GAGCTTTGACTAGACCTGAAATTTATTTCTTTTAGTTCAAGCAATAAAGAATTCCTTGATA
CCAAGGACCTTATGATGTTTCTTGAGGCAGAACAGGGTGTGCCACATATAAATGAGGAAATAAGCCTTGA
AATTATTCACAAATATGAACATCCAAAGAGGGTCAGGAAAAGGGCTGGCTCTCCATAGACGGGTTCACT
AATACCTTATGTCACCTGACTGTTATATTCGATCCAGAACATAAGAAGGTCTGTGAGGATATGAAGC
AACCTCTGTCTCATTACTTTATAAACTCATCTCATAATACATACTTAATAGAGGATCAGTTCCGAGGTCC
CTCCGACATCACAGGATATATTCGAGCTCTTAAATGGGTTGCCGAGTGTGAATTAGATGTATGGGAT
GGGCCGACAATGAACCTGTAATTTACACAGGCCACACCATGACCTCTCAGATAGTTTTCCGAGTGTC
TTGATATTATTAACAAGTATGCATTCTTTGCTTCAGAGTATCCTCTTATCTTGTGTTAGAAAACCACTG
TTCCATTAACAACAGAAGGTAATGGTTGAGCAGATGAAGAACTTTTAGGAGACAAGCTCTATACAACA
TCACCAATGTTGAGGAATCTTATCTACCATCCCCAGATGTCCTGAAAGGGAAAAATACTAATTAAGCAA
AGAAGCTGTCCTCAAATGCTCTGGGTTAGAAGGAGATGTTACTGACGAAGATGAAGGAGCAGAAATGTC
TCAGAGGATGGGAAAAGAGAACATGGAGCAACCAATAATGTGCCTGTGAAGCGATTTACAGCTTTGTAAA



[View online »](#)

GAAGTGTCTGAACTGGTCAGCATCTGCAAATCAGTTCAGTTCAAAGAATTCAGATGTCGTTTCAGGTTCC
 AGAAGTACTGGGAAGTCTGTTCCCTTTAATGAAGTGCTTCCAGCAAGTACGCCAATGAAAATCCAGGGGA
 CTTTGTAAATTACAACAAACGTTTTCTTCTAGGGTTTTCCAGTCCAATGAGAATTGATTCCAGTAAC
 ATGAATCTCAAGATTTTTGAAATGTGGTTGCCAAATGTAGCCATGAACCTTCCAGACACCAGGACTGA
 TGATGGACCTGAATATTGGCTGGTTAGGCAGAACGAAACTGTGGCTATGTCTCCGGCCAGCCATCAT
 GAGGGAGGAGGTCTCCTTCTTCCAGCGTCAATAACAAAAGACTCTGTCCAGGGGTCTCACCTCACTTCTT
 CACATTAATAATCATCAGTGGGCAGAACTTCCCAAGCCAAAGGATCAGGTGCCAAAGGTGATGTGGTAG
 ATCCTTATGTCTATGTTGAAATCCATGGAATCCCTGCTGATTGTGCAGAACAAAGGACAAAAACAGTGCA
 CCAGAATGGAGACGCTCACATTTTTGATGAAAGCTTTGAATTTCAAATCAACCTGCCTGAACTGGCCATG
 GTGCGCTTTGTAGTGCTGGATGACTACATTGGGGATGAATTCATCGGCCAGTACACAATTCCTTTG
 AATGTTTACAGACGGGCTACCGCATGTCCCCTGCAGTCTTAACTGGAGAGGCTTGCACATGCTTC
 TTTATTTGTCCACGTGGCTATTACTAACCGAAGAGGAGGAGGAAAGCCTCGTAAAAGGGGCTTTCTGTG
 AGAAAAGGAAGAAATCCAGGGAATATGCATCTTTGAGAACACTGTGGATAAAACCGTGGATGAGGTAT
 TCAAGAATGCCAGCCCCTATACGGGATGCCACAGATCTGAGAGAAAACATGCAGAATGCGGTGGTGTCT
 ATCAAGGAGCTGTGTGGCTCTCTCTGTGGCAATCTCATGCAGTGCATGTTGGCGGTGTCTCCCGC
 TTTCTGGGGCCGATAACACACCCTAGTGGTCTAAATCTCAGCGAGCAGTACCCACAATGGAGCTGC
 AGGGAATTGTGCCGGAGTCTGAAGAAGATCGTAACAACCTATGACATGATGATTCACTCCCTCAAGGC
 GTTGATTGAAAATGCAGATGCTGTATATGAAAAGATCGTACATTGTGAGAAGGCAGCCATGGAATCCAT
 GAACACTTGCACAGCATAGGCACCAAGGAAGGTTTGAAGGAAAGAAAACACAAAAGCAGTGGAGAGCT
 TTACCTGGAATATTACCATTTAAAGGGACAAGCAGATCTTTGAAATATGCTAAGAATGAGACATTGGA
 GAACCTGAAACAAATCCATTTTGTCTGCTGTTTCATGTGGACTGAATAACCAGGCACCGAAAATGCTGAT
 GTCCAGAAGCCACGCCGGAGCTTGAAGTCATACCCGAAAAGCAAACGATGAACTGGAGAA

ACGCGTACGCGGCCGCTCGAGCAGAACTCATCTCAGAAGAGGATCTGGCAGCAAATGATATCCTGGATT
 ACAAGGATGACGACGATTAAGTTTAA

Protein Sequence:

>RC207303 protein sequence
 Red=Cloning site Green=Tags(s)

MPTEKKISSASDCINSMVEGSELKRVRSNRIYHRYFLLDADMQSLRWEPSSKKDSEKAKIDIKSIKEVRT
 GKNTDIFRSNGISDRISEDCAFVSVIYGENYESLDLVANSADVANIWVTGLRYLISYGKHTLDMLESSQDN
 MRTSWVSQMFSEIDVDNLGHITLCNAVQCIRNLNPGLKTSKIELKFELHKSDDKAGTEVTKEEFIEVFH
 ELCTRPEIYFLLVQFSSNKEFLDTKDLMMFLEAEQGVVAHINEEISLEIIHKYEPSKEGQEKGLWSIDGFT
 NYLMSPDCYIFDPEHKKVCQDMKQPLSHYFINSSHNTYLIEDQFRGSPDITGYIRALKMGCRSVELDVWD
 GPDNEPVIYTGHTMTSQIVFRSVIDIINKYAFFASEYPLILCLENHCSIKQQKVMVQHMKLLGDKLYTT
 SPNVEESYLPSPDVLKGIKILIKAKKLSNCSGVEGDVTDDEGAEMSQRMGKENMEQPNNVPVKRFQLCK
 ELSELVSIKSVQFKEFQMSFQVQKYWEVCSFNEVLASKYANENPGDFVNYNKRFLARVFPSPMRIDSSN
 MNPQDFWKCGCQIVAMNFQTPGLMMDLNIWFRQNGNCGYVLRPAIMREEVSFFSVNTKDSVPGVSPQLL
 HIKIISGQNFPKPKGSGAKGDVDPYVYVEIHGIPADCAEQRTKTVHQNGDAHIFDESFEFQINLPELAM
 VRFVVLDDYIGDEFIGQYTIPEFLQTYRHYVPLQSLTGEVLAHASLFVHVAITNRRGGKPRKRGLSV
 RKGKKSREYASRLTLWIKTVDEVFKNAQPPIRDATDLRENMQNAVVSFKELCGLSSVANLMQCMCLAVSPR
 FLGPDNTPVLVNLSEQYPTMELQGIPEVLKKIVTTYDMMIQSLKAL IENADAVYEKIVHCQKAAMEFH
 EHLHSIGTKEGLKERKLQKAVESFTWNITILKGQADLLKYAKNETLENLQIHFHAAVSCGLNKPGETENAD
 VQKPRRSLEVIPEKANDETGE

TRTRPLEQKLISEEDLAANDILDYKDDDDKV

Chromatograms:

https://cdn.origene.com/chromatograms/mk6321_e06.zip

Restriction Sites:

Sgfl-MluI

Cloning Scheme:


ACCN: NM_015184

ORF Size: 3003 bp

OTI Disclaimer: The molecular sequence of this clone aligns with the gene accession number as a point of reference only. However, individual transcript sequences of the same gene can differ through naturally occurring variations (e.g. polymorphisms), each with its own valid existence. This clone is substantially in agreement with the reference, but a complete review of all prevailing variants is recommended prior to use. [More info](#)

OTI Annotation: This clone was engineered to express the complete ORF with an expression tag. Expression varies depending on the nature of the gene.

Components: The ORF clone is ion-exchange column purified and shipped in a 2D barcoded Matrix tube containing 10ug of transfection-ready, dried plasmid DNA (reconstitute with 100 ul of water).

- Reconstitution Method:**
1. Centrifuge at 5,000xg for 5min.
 2. Carefully open the tube and add 100ul of sterile water to dissolve the DNA.
 3. Close the tube and incubate for 10 minutes at room temperature.
 4. Briefly vortex the tube and then do a quick spin (less than 5000xg) to concentrate the liquid at the bottom.
 5. Store the suspended plasmid at -20°C. The DNA is stable for at least one year from date of shipping when stored at -20°C.

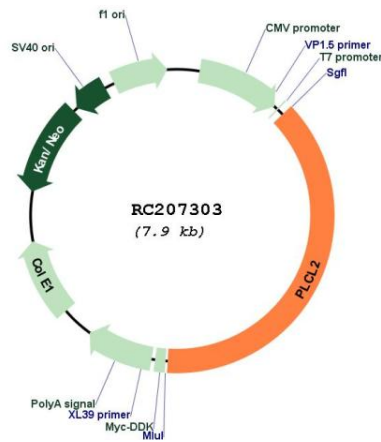
RefSeq: [NM_015184.3](#)

RefSeq Size: 3964 bp

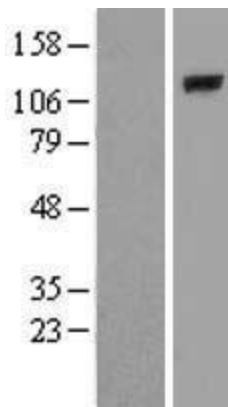
RefSeq ORF: 3006 bp

Locus ID: 23228
UniProt ID: [Q9UPR0](#)
Cytogenetics: 3p24.3
Domains: C2, PI-PLC-X, PI-PLC-Y, PH
Protein Families: Druggable Genome
MW: 113.7 kDa
Gene Summary: May play an role in the regulation of Ins(1,4,5)P3 around the endoplasmic reticulum. [UniProtKB/Swiss-Prot Function]

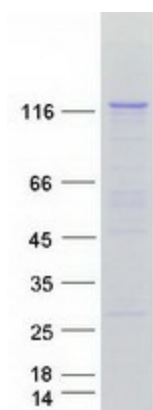
Product images:



Circular map for RC207303



Western blot validation of overexpression lysate (Cat# [LY414738]) using anti-DDK antibody (Cat# [TA50011-100]). Left: Cell lysates from untransfected HEK293T cells; Right: Cell lysates from HEK293T cells transfected with RC207303 using transfection reagent MegaTran 2.0 (Cat# [TT210002]).



Coomassie blue staining of purified PLCL2 protein (Cat# [TP307303]). The protein was produced from HEK293T cells transfected with PLCL2 cDNA clone (Cat# RC207303) using MegaTran 2.0 (Cat# [TT210002]).