

Product datasheet for RC207302

LPGAT1 (NM_014873) Human Tagged ORF Clone

Product data:

Product Type:	Expression Plasmids
Product Name:	LPGAT1 (NM_014873) Human Tagged ORF Clone
Tag:	Myc-DDK
Symbol:	LPGAT1
Synonyms:	FAM34A; FAM34A1; NET8
Mammalian Cell Selection:	Neomycin
Vector:	pCMV6-Entry (PS100001)
E. coli Selection:	Kanamycin (25 ug/mL)
ORF Nucleotide Sequence:	>RC207302 ORF sequence Red=Cloning site Blue=ORF Green=Tags(s)

TTTTGTAATACGACTCACTATAGGGCGCCGGGAATTCGTCGACTGGATCCGGTACCGAGGAGATCTGCC
GCC**CGCATCGCC**

ATGGCTATAACTTTGGAAGAAGCTCCGTGGCTGGGCTGGCTCTTGGTGAAAGCACTGATGAGGTTTGCC
TCATGGTCGTCACAACCTGGTTGCTATCCATCCTACATCTGCTATGTAATTATACTTCAGCCCCTTCG
AGTGCTGGACAGTAAGCGGTTCTGGTATATCGAAGGAATCATGTATAAATGGCTTTTAGGAATGGTAGCT
TCCTGGGGATGGTATGCTGGATATACAGTGATGGAATGGGAGAAGATATTAAGCAGTTTCAAAGATG
AAGCAGTGATGTTGGTGAATCATCAGGCAACAGGAGATGTGTGCACACTGATGATGTGCCCTCCAGGACAA
AGGACTGGTTGTTGCTCAGATGATGTGGTTGATGGATCATATTTTAAGTACACAAACTTTGGAATTGTT
TCTCTAGTTTCATGGAGACTTCTTTATAAGACAGGGAAGATCTTATCGTGACCAACAGCTGCTGCTTCTCA
AGAAGCACTTAGAAAATAATTACAGGAGCAGAGATCGAAAATGGATTGTTTTGTTCCAGAAGGGGGCTT
CCTCAGGAAGAGGCGAGAAAACAAGTCAGGCATTTGCCAAGAAAAATAACTTGCCATTTCTTACAAATGTT
ACTCTGCCAAGGTCTGGGCAACAAAAATATTTTGAATGCACTTGTAGCACAACAGAAAAATGGAAGTC
CAGCAGGAGGAGATGCTAAAGAATTAGACAGCAAAATCAAAGGCCTCCAGTGGATAATAGATACAACGAT
AGCTTATCCCAAAGCTGAACCTATAGATATTCAAACCTGGATCCTTGGATACAGGAAACCAACAGTCACA
CATGTACATTACAGGATCTTCCAATTAAGATGTACCCCTGGAGACTGATGACCTTACCCTTGGCTCT
ATCAGCGTTTGTGAAAAAGAAGACCTTATCACATTTTATGAAACAGGAGCTTTTCCACCTTCCAA
GGCCATAAAGGAAGCTGTTTCCAGGGAGATGACCCCTCAGCAACTTGTGGATATTTCTCATACAGTCTTTT
GCATTTTGTGAGGCTATATGTGGTACAACATCATTAGTATTTTACCATTGCCTGTTT

ACGCGTACGCGGCCGCTCGAGCAGAAACTCATCTCAGAAGAGGATCTGGCAGCAATGATATCCTGGATT
ACAAGGATGACGACGATAAGGTTTAA



[View online »](#)

Protein Sequence: >RC207302 protein sequence
Red=Cloning site Green=Tags(s)

MAITLEEAPWLGWLLVKALMRFAMVVNNLVAIPSYICYVILQPLRVLDSKRFWYIEGIMYKWLGMVA
 SWGWYAGYVMEWGEDIKAVSKDEAVMLVNHQATGDVCTLMMCLQDKGLVVAQMMWLMDFIKYTNFGIV
 SLVHGDFFIHQGRSYRDQQLLLKKHLENNYRSRDRKWI VLFPEGGFLRKRRETSQAF AKNNLPFLT NV
 TLPRSGATKIILNALVAQKNGSPAGGDAKELDSKSKGLQWIIDTTIAYPKAEPIDIQTWILGYRKPTVT
 HVHYRIFPIKDVPLETDDLTTWLYQRFVEKEDLLSHFYETGAFPPSKGHKEAVSREMTLSNLWIFLIQSF
 AFLSGYMWYNIQYFYHCLF

TRTRPLEQKLISEEDLAANDILDYKDDDDKV

Chromatograms: https://cdn.origene.com/chromatograms/mk6138_g09.zip

Restriction Sites: SgfI-MluI

Cloning Scheme:



* The last codon before the Stop codon of the ORF

ACCN: NM_014873

ORF Size: 1110 bp

OTI Disclaimer: The molecular sequence of this clone aligns with the gene accession number as a point of reference only. However, individual transcript sequences of the same gene can differ through naturally occurring variations (e.g. polymorphisms), each with its own valid existence. This clone is substantially in agreement with the reference, but a complete review of all prevailing variants is recommended prior to use. [More info](#)

OTI Annotation: This clone was engineered to express the complete ORF with an expression tag. Expression varies depending on the nature of the gene.

Components: The ORF clone is ion-exchange column purified and shipped in a 2D barcoded Matrix tube containing 10ug of transfection-ready, dried plasmid DNA (reconstitute with 100 ul of water).

Reconstitution Method:

1. Centrifuge at 5,000xg for 5min.
2. Carefully open the tube and add 100ul of sterile water to dissolve the DNA.
3. Close the tube and incubate for 10 minutes at room temperature.
4. Briefly vortex the tube and then do a quick spin (less than 5000xg) to concentrate the liquid at the bottom.
5. Store the suspended plasmid at -20°C. The DNA is stable for at least one year from date of shipping when stored at -20°C.

RefSeq: [NM_014873.3](#)

RefSeq Size: 7802 bp

RefSeq ORF: 1113 bp

Locus ID: 9926

UniProt ID: [Q92604](#)

Cytogenetics: 1q32.3

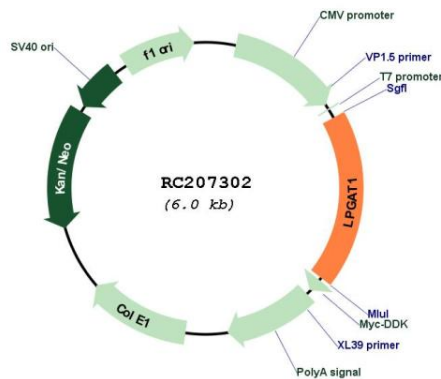
Domains: Acyltransferase

Protein Families: Transmembrane

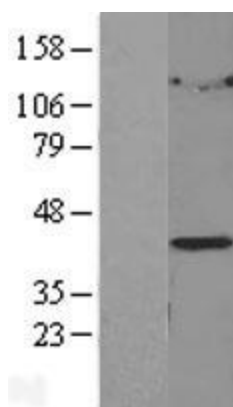
MW: 43.1 kDa

Gene Summary: This gene encodes a member of the lysophospholipid acyltransferase family. The encoded protein catalyzes the reacylation of lysophosphatidylglycerol to phosphatidylglycerol, a membrane phospholipid that is an important precursor for the synthesis of cardiolipin. Alternative splicing results in multiple transcript variants. [provided by RefSeq, Mar 2016]

Product images:



Circular map for RC207302



Western blot validation of overexpression lysate (Cat# [LY402383]) using anti-DDK antibody (Cat# [TA50011-100]). Left: Cell lysates from untransfected HEK293T cells; Right: Cell lysates from HEK293T cells transfected with RC207302 using transfection reagent MegaTran 2.0 (Cat# [TT210002]).