

## Product datasheet for RC207301

### LHX8 (NM\_001001933) Human Tagged ORF Clone

#### Product data:

Product Type:	Expression Plasmids
Product Name:	LHX8 (NM_001001933) Human Tagged ORF Clone
Tag:	Myc-DDK
Symbol:	LHX8
Synonyms:	LHX7
Mammalian Cell Selection:	Neomycin
Vector:	pCMV6-Entry (PS100001)
E. coli Selection:	Kanamycin (25 ug/mL)
ORF Nucleotide Sequence:	>RC207301 representing NM_001001933 Red=Cloning site Blue=ORF Green=Tags(s)

TTTTGTAATACGACTCACTATAGGGCGGCCGGAATTCGTCGACTGGATCCGGTACCGAGGAGATCTGCC  
GCC**CGGATCGCC**

ATGCAGATTCTGAGCAGGTGTCAGGGGCTCATGTGAGAGGAGTGCGGGCGGACTACAGCCCTGGCGGCCG  
GGAGGACTCGCAAAGGCGCCGGGAAGAGGGACTGGTGTAGCCCCGAGGGAGCGGGGGACGAGGACTCGTG  
CTCCTCCTCGGCCCGCTGTCCCGTGTCTCGCCCCGGTCCATGGCCTCGGGCTCCGGCTGCCCTCT  
GGCAAGTGTGTGCAACAGTTGCGGCCTGGAGATCGTGGACAAATACCTTCTCAAGGTGAATGACCTAT  
GCTGGCATGTCCGGTGTCTCCTGTCAGTGTTCGAGAACCTCCCTAGGAAGGCACACCAGCTGTTATAT  
TAAAGACAAAGACATTTTCTGCAAACCTTGATTATTTTCAGAAGGTATGGAACCTCGCTGCTCTCGATGTGGG  
AGACACATCCATTCTACTGACTGGTCCGAGAGCCAAGGGGAATGTCTATCACTTGGCATGCTTTGGCT  
GCTTTTCTGCAAAGGCAACTTTCCACAGGAGAGGAGTTTGGTGGTGGAAAGAGAAAGTCCCTCTGCAG  
AGTACATTATGACTGCATGCTGGATAATTTAAAAAGAGAAGTAGAAAAATGGGAATGGGATTAGTGTGGAA  
GGTGCCCTCCTCACAGAGCAAGATGTTAACCATCCAAAACCAGCAAAAAGAGCTCGGACCAGCTTTACAG  
CAGATCAGCTTCAGGTTATGCAAGCACAATTTGCTCAGGACAACAACCCAGATGCACAGACACTCCAGAA  
ATTGGCAGAAAGGACAGGCTTGTGAGCAGACGTGTGATACAGGTGTGGTTTCAGAATTGTAGAGCACGCCAC  
AAGAAACAGTCAAGTCTAATCACTCATCTCCACCCAGTACAGCAGCCCCACCCCTCCAGGCTGTCTC  
CACCCATGTTAGAAGAAATGGCTTATTCTGCCTACGTGCCCAAGATGGAACGATGTTAACTGCGCTGCA  
TAGTTATATGGATGCTCATTACCAACAACCTCTGGACTCCAGCCCTGTTACCCATTCAATGACACAA  
CTGCCAATAAGTCATACC

**ACGCGT**ACGCGGCCGCTCGAGCAGAAACTCATCTCAGAAGAGGATCTGGCAGCAATGATATCCTGGATT  
ACAAGGATGACGACGATAAGGTTAA



[View online »](#)

**Protein Sequence:** >RC207301 representing NM\_001001933  
 Red=Cloning site Green=Tags(s)

MQILSRCQGLMSEECGRRTTALAAGRTRKGAGEEGLVSPEGAGDEDCSSSAPLSPSSSPRSMASGSGCPP  
 GKVCVNSCGLEIVDKYLLKVNDLCWHVRCLSCSVCRTSLGRHTSCYIKDKDIFCKLDYFRRYGTRCSRCG  
 RHIHSTDWVRRAKGNVYHLACFACFSCKRQLSTGEEFALVEEKVLCRVHYDCMLDNLKREVENGNISVE  
 GALLTEQDVNHPKPAKRARTSFTADQLQVMAQF AQDNNPDAQTLQKLAERTGLSRRVIQVWFQNCRARH  
 KKHVSPNHSSSTPVTAAPPSRLSPPMLEEMAYSAYVPQDGMTALTLSYMDAHSPTTLGLQPLPHSMTQ  
 LPI SHT

TRTRPLEQKLISEEDLAANDILDYKDDDDKV

**Chromatograms:** [https://cdn.origene.com/chromatograms/ja1743\\_f03.zip](https://cdn.origene.com/chromatograms/ja1743_f03.zip)

**Restriction Sites:** SgfI-MluI

**Cloning Scheme:**



**ACCN:** NM\_001001933

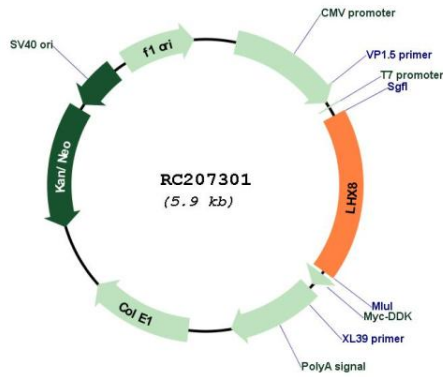
**ORF Size:** 1068 bp

**OTI Disclaimer:** Due to the inherent nature of this plasmid, standard methods to replicate additional amounts of DNA in E. coli are highly likely to result in mutations and/or rearrangements. Therefore, OriGene does not guarantee the capability to replicate this plasmid DNA. Additional amounts of DNA can be purchased from OriGene with batch-specific, full-sequence verification at a reduced cost. Please contact our customer care team at [custsupport@origene.com](mailto:custsupport@origene.com) or by calling 301.340.3188 option 3 for pricing and delivery.

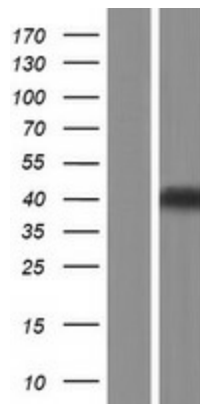
The molecular sequence of this clone aligns with the gene accession number as a point of reference only. However, individual transcript sequences of the same gene can differ through naturally occurring variations (e.g. polymorphisms), each with its own valid existence. This clone is substantially in agreement with the reference, but a complete review of all prevailing variants is recommended prior to use. [More info](#)

<b>OTI Annotation:</b>	This clone was engineered to express the complete ORF with an expression tag. Expression varies depending on the nature of the gene.
<b>Components:</b>	The ORF clone is ion-exchange column purified and shipped in a 2D barcoded Matrix tube containing 10ug of transfection-ready, dried plasmid DNA (reconstitute with 100 ul of water).
<b>Reconstitution Method:</b>	<ol style="list-style-type: none"><li>1. Centrifuge at 5,000xg for 5min.</li><li>2. Carefully open the tube and add 100ul of sterile water to dissolve the DNA.</li><li>3. Close the tube and incubate for 10 minutes at room temperature.</li><li>4. Briefly vortex the tube and then do a quick spin (less than 5000xg) to concentrate the liquid at the bottom.</li><li>5. Store the suspended plasmid at -20°C. The DNA is stable for at least one year from date of shipping when stored at -20°C.</li></ol>
<b>RefSeq:</b>	<u><a href="#">NM_001001933.1</a></u> , <u><a href="#">NP_001001933.1</a></u>
<b>RefSeq Size:</b>	2393 bp
<b>RefSeq ORF:</b>	1071 bp
<b>Locus ID:</b>	431707
<b>UniProt ID:</b>	<u><a href="#">Q68G74</a></u>
<b>Cytogenetics:</b>	1p31.1
<b>MW:</b>	39.1 kDa
<b>Gene Summary:</b>	The protein encoded by this gene is a member of the LIM homeobox family of proteins, which are involved in patterning and differentiation of various tissue types. These proteins contain two tandemly repeated cysteine-rich double-zinc finger motifs known as LIM domains, in addition to a DNA-binding homeodomain. This family member is a transcription factor that plays a role in tooth morphogenesis. It is also involved in oogenesis and in neuronal differentiation. This gene is a candidate gene for cleft palate, and it is also associated with odontoma formation. Alternative splicing of this gene results in multiple transcript variants. [provided by RefSeq, Jan 2012]

Product images:



Circular map for RC207301



Western blot validation of overexpression lysate (Cat# [LY424281]) using anti-DDK antibody (Cat# [TA50011-100]). Left: Cell lysates from untransfected HEK293T cells; Right: Cell lysates from HEK293T cells transfected with RC207301 using transfection reagent MegaTran 2.0 (Cat# [TT210002]).