

Product datasheet for RC207300

C7orf61 (NM_001004323) Human Tagged ORF Clone

Product data:

Product Type: Expression Plasmids
Product Name: C7orf61 (NM_001004323) Human Tagged ORF Clone
Tag: Myc-DDK
Symbol: C7orf61
Mammalian Cell Selection: Neomycin
Vector: pCMV6-Entry (PS100001)
E. coli Selection: Kanamycin (25 ug/mL)
ORF Nucleotide Sequence: >RC207300 ORF sequence
Red=Cloning site Blue=ORF Green=Tags(s)

TTTTGTAATACGACTCACTATAGGGCGGCCGGAATTCGTCGACTGGATCCGGTACCGAGGAGATCTGCC
GCC**CGATCGCC**

ATGGTTGTGGTCATGAAGTTCTTCCGATGGGTTAGACGGGCTTGGCAAAGGATTATTTCTGGGTTTTCT
TCTGGAGGCCAAAAATTAACCAACCATCTCAGGACACCCCTGACTCCAAGAACTCATTGAAGAAGAT
GGAGAAGACTCTCCAGGTGGTTGAGACTTTGAGGTTGGTCGAGCTCCAAAAGAGGCTAAGCCCAAGTTG
GGTGAGTCCCCGAGCTGGCAGATCCCTGCGTGTGGCCAAGACTACAGAGGAGACCGAGGTGGAGCTGG
GCCAACAGGGCCAATCCCTACTGCAGCTGCCGAGGACGGCCGTC AAGTCTGTCTCCACGCTCATGGTCTC
TGCCCTGCAGAGCGGCTGGCAGATGTGCAGCTGGAAGTCATCAGTGAGTTCTGCCTCAGTCAGTCCCAA
GTGAGGACGCAGTCACCTTTGAAGACTCCGGAGGCTGAGTTGCTGTGGGAGGTGTACCTGGTGTGTGGG
CCGTTTCGAAACACCTGCGCCGGCTGTACCGCAGGAGGAGGACAGACGGCACACGTCAGTCCGATGCCA
TGCTGCCCCCGACCAACCCGGCTCAGTCCCTGAAACTGGATGCCCAAAGTCCCCTC

ACGCGTACGCGGCCGCTCGAGCAGAACTCATCTCAGAAGAGGATCTGGCAGCAATGATATCCTGGATT
ACAAGGATGACGACGATAAGGTTTAA

Protein Sequence: >RC207300 protein sequence
Red=Cloning site Green=Tags(s)

MVVVMKFFRWVRRWQRISWVFFWRQKIKPTISGHPDSKKHSLKMEKTLQVVETLRLVELPKEAKPKL
GESPELADPCVLAKTTEETEVELGQQGQSLQLPRTAVKSVSTLMVSALQSGWQMSWKSSVSSASVSSQ
VRTQSPLKTPAEALLWEVYLVLWAVRKHLRRLYRRQERHRRHHVRCHAAPRPNPAQSLKLDASPL

TRTRPLEQKLISEEDLAANDILDYKDDDDKV

Chromatograms: https://cdn.origene.com/chromatograms/mk6321_e08.zip



[View online »](#)

Restriction Sites: SgfI-MluI

Cloning Scheme:



ACCN: NM_001004323

ORF Size: 618 bp

OTI Disclaimer: The molecular sequence of this clone aligns with the gene accession number as a point of reference only. However, individual transcript sequences of the same gene can differ through naturally occurring variations (e.g. polymorphisms), each with its own valid existence. This clone is substantially in agreement with the reference, but a complete review of all prevailing variants is recommended prior to use. [More info](#)

OTI Annotation: This clone was engineered to express the complete ORF with an expression tag. Expression varies depending on the nature of the gene.

Components: The ORF clone is ion-exchange column purified and shipped in a 2D barcoded Matrix tube containing 10ug of transfection-ready, dried plasmid DNA (reconstitute with 100 ul of water).

- Reconstitution Method:
1. Centrifuge at 5,000xg for 5min.
 2. Carefully open the tube and add 100ul of sterile water to dissolve the DNA.
 3. Close the tube and incubate for 10 minutes at room temperature.
 4. Briefly vortex the tube and then do a quick spin (less than 5000xg) to concentrate the liquid at the bottom.
 5. Store the suspended plasmid at -20°C. The DNA is stable for at least one year from date of shipping when stored at -20°C.

RefSeq: [NM_001004323.3](#)

RefSeq Size: 1020 bp

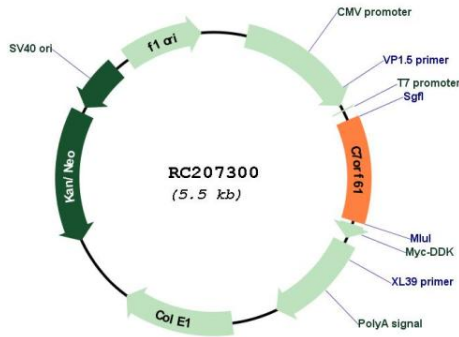
RefSeq ORF: 621 bp

Locus ID: 402573

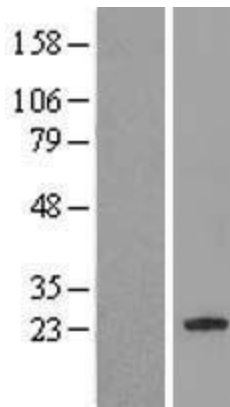
UniProt ID: [Q8IZ16](#)

Cytogenetics: 7q22.1
 MW: 23.9 kDa

Product images:



Circular map for RC207300



Western blot validation of overexpression lysate (Cat# [LY423725]) using anti-DDK antibody (Cat# [TA50011-100]). Left: Cell lysates from untransfected HEK293T cells; Right: Cell lysates from HEK293T cells transfected with RC207300 using transfection reagent MegaTran 2.0 (Cat# [TT210002]).



Coomassie blue staining of purified C7orf61 protein (Cat# [TP307300]). The protein was produced from HEK293T cells transfected with C7orf61 cDNA clone (Cat# RC207300) using MegaTran 2.0 (Cat# [TT210002]).