

## Product datasheet for RC207291

### TDRD10 (NM\_182499) Human Tagged ORF Clone

#### Product data:

Product Type:	Expression Plasmids
Product Name:	TDRD10 (NM_182499) Human Tagged ORF Clone
Tag:	Myc-DDK
Symbol:	TDRD10
Mammalian Cell Selection:	Neomycin
Vector:	pCMV6-Entry (PS100001)
E. coli Selection:	Kanamycin (25 ug/mL)
ORF Nucleotide Sequence:	>RC207291 representing NM_182499 Red=Cloning site Blue=ORF Green=Tags(s)

CTATAGGGCGGCCGGGAATTCGTGCGACTGGATCCGGTACCGAGGAGATCTGCCGCCGCGATCGCCGGCCG  
GCC

ATGATCCAGCAGCCTCGGGCCCCGCTGGTGTGGAGAAGGCTTCTGGTGAAGGATTTGGCAAACCGCCG  
CTATTACAGCTCGCTCCTAAAGCTCCTGTGACCTATGTGAGACAGAGAACTGAGGGCAGCCTTCTT  
TGCAGTCCCGTTGGAAATGAGAGGGTCCCTCCTGGTGTGCTCCTGAGGGAATGCTTCCGAGACCTGAGC  
TGGCTGGCACTCATCCATAGCGTCCGTGGGAGCGGGCTGCTGGTGACGAGTATCGTCCCGAAGACCC  
CGTTTTTCTGGCCATGCACATCACTGAGGCTCTGCACCAGAACATGCAGGCTCTGTTTAGCACCCCTGGC  
TCAGGCGGAGGAGCAGCAGCCCTACCTGGAGGGCTCCACCGTTATGCGCGGGACTCGCTGTCTGGCAGAG  
TACCACCTGGGGGATTATGGACACGCTGGAACAGGTGTTGGGTGCTGGACAGGGTGGACACCTGGGCTG  
TGGTCATGTTTCATTGATTTGGACAGTTGGCCACCATCCCTGTGCACTCTCTGCGCAGCCTAGACAGCGA  
CGACTTCTGGACCATCCCACCCCTGACTCAGCCATTATGCTGGAGAAAGACATTTGAGTTCGTATGAG  
GTTGTCCATCGAATCCTCAAAGGAAAATCACTGGTGTCTTGAACCTCGGCGTTGCACATCCTAAAGTTTG  
AAGAGTCTAAA

ACGCGTACGCGGCCGCTCGAGCAGAAACTCATCTCAGAAGAGGATCTGGCAGCAAATGATATCCTGGATT  
ACAAGGATGACGACGATAAGGTTTAA



[View online »](#)



**Reconstitution Method:**

1. Centrifuge at 5,000xg for 5min.
2. Carefully open the tube and add 100ul of sterile water to dissolve the DNA.
3. Close the tube and incubate for 10 minutes at room temperature.
4. Briefly vortex the tube and then do a quick spin (less than 5000xg) to concentrate the liquid at the bottom.
5. Store the suspended plasmid at -20°C. The DNA is stable for at least one year from date of shipping when stored at -20°C.

**RefSeq:** [NM\\_182499.2](#), [NP\\_872305.2](#)

**RefSeq Size:** 2346 bp

**RefSeq ORF:** 1056 bp

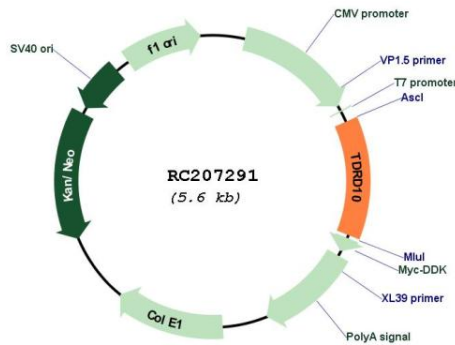
**Locus ID:** 126668

**UniProt ID:** [Q5VZ19](#)

**Cytogenetics:** 1q21.3

**MW:** 39.6 kDa

**Product images:**



Circular map for RC207291