

Product datasheet for **RC207290**

TTC30A (NM_152275) Human Tagged ORF Clone

Product data:

Product Type:	Expression Plasmids
Product Name:	TTC30A (NM_152275) Human Tagged ORF Clone
Tag:	Myc-DDK
Symbol:	TTC30A
Synonyms:	FAP259; IFT70A; TTC30B
Mammalian Cell Selection:	Neomycin
Vector:	pCMV6-Entry (PS100001)
E. coli Selection:	Kanamycin (25 ug/mL)



[View online »](#)

ORF Nucleotide
Sequence:

>RC207290 ORF sequence
Red=Cloning site Blue=ORF Green=Tags(s)

TTTTGTAATACGACTCACTATAGGGCGGCCGGGAATTCGTCGACTGGATCCGGTACCGAGGAGATCTGCC
GCCGCGATCGCC

ATGGCTGGTCTGAGCGGCGCGCAGATCCCCGACGGGGAGTTTACCGCGCTAGTGTACCGGCTCATCCGCG
ATGCCCGCTACGCCGAGGCGGTGACAGTCTGGGCCGAGAACTGCAGCGAGCCCCAGGAGCCGTGCCGG
CCTGTCGCTGCTAGGCTACTGCTACTACCGCTGCAGGAGTTCGCGCTGGCGGCCGAGTGTATGAGCAG
CTGGGCCAGTGCACCCGGAAGTGGAGCAGTACCGCTGTACCAGGCCAGGCCCTGTACAAGGCCTGCC
TTTATCCGGAGGCCACTCGGGTCGCTTCTTCTCTGGATAACCCCGCTACCACAGCCGGGTCTCCG
CCTGCAAGCTGCCATCAAGTATAGCGAGGGCGATCTGCCAGGGTCCAGGAGCCTGGTGGAGCAGTGTG
AGTGGGAAGGGGAGAAGAAAGTGGAGGCGACAATGAGACCGATGGCCAGGTCAACCTGGGTTGTTTGC
TCTACAAGGAGGGACAGTATGAAGCTGCATGCTCCAAGTTTTCTGCCACACTGCAGGCCTCGGGCTACCA
GCCTGACCTTTCACAACCTGGCTTTGGCCTATTACAGCAGCCGACAGTATGCCTCAGCACTGAAGCAT
ATCGCTGAGATTATTGAGCGTGGCATCCGCCAGCATCCTGAGCTAGGTGTGGGCATGACCACCGAGGGCT
TTGATGTTGCGAGTGTGGCAACACCTTAGTTCCTCATCAGACTGCTCTGGTGGAAAGCCTTCAACCTTAA
GGCAGCCATAGAATACCAACTGAGAAACTATGAGGTAGCTCAAGAAACCTCACCAGCATGCCACCCAGG
GCAGAGGAAGAGTTGGACCCTGTGACCCTGCACAACCAGGCACTAATGAACATGGATGCCAGGCCTACAG
AAGGGTTTGAAAAGCTACAGTTTTTGTCCAACAGAATCCCTTCTCCAGAGACTTTTGGCAACCTGTT
GCTGCTCTACTGTAATATGAGTATTTGACCTGGCAGCAGATGTCTGGCAGAAAATGCCATTTGACG
TATAAGTTCCTCACACCCTATCTCTATGACTTCTTAGATGCCCTGATCACTTCCAGACAGCTCCTGAAG
AGGCTTTCATTAAGCTTGATGGCTAGCAGGGATGCTGACTGAGCAGCTTCGGAGACTACCAAGCAAGT
ACAGGAAGCAAGACACAACAGAGATGATGAAGCTATCAAAAAGGCAGTGAATGAATATGATGAAACCATG
GAGAAATACATTCCTGTGTTGATGGCTCAGGCAAAAATCTACTGGAATCTTGAAAATTATCCAATGGTGG
AAAAGATCTTCCGCAATCTGTGGAATTCTGTAACGACCATGATGTGTGGAAGTTGAATGTGGCTCATGT
TCTGTTTATGCAGGAAAACAAATACAAAGAAGCCATTGGTTTCTATGAACCCATAGTCAAGAAGCATTAT
GATAACATCCTGAATGTCAGTGTATTGTACTGGCTAATCTCTGTGTTTCTATATTATGACAAGTCAAA
ATGAAGAAGCAGAGGAGTTGATGAGGAAGATTGAAAAGGAGGAAGAGCAGCTCTTATGATGACCCAAA
TAGGAAAATGTACCATCTCTGCATTGTGAATTTGGTATAGGAACTCTTATTGTGCCAAAGGAAACTAT
GAGTTTGGTATTCTCGAGTTATCAAAAGCTTGGAGCCTTATAATAAAAGGCTGGGAACAGATACCTGGT
ATTATGCCAAAAGATGCTTCTGTCTTGTAGAAAACATGTCAAAACACATGATAGTCATTCATGACAG
TGTTATTCAAGAATGTGTCCAGTTTTAGGACACTGTGAACCTTATGGCACAACATACCTGCTGTATT
GAACAACCCCTCGAAGAAGAAAGATGCATGTTGGGAAGAATACAGTCACAGATGAGTCCAGACAATTGA
AAGCTTTGATTTATGAGATTATAGGATGGAATAAG

ACGCGTACGCGGCCGCTCGAGCAGAACTCATCTCAGAAGAGGATCTGGCAGCAATGATATCCTGGATT
ACAAGGATGACGACGATAAGGTTTAA

Protein Sequence: >RC207290 protein sequence
Red=Cloning site Green=Tags(s)

MAGLSGAQIPDGEFTALVYRLIRDARYAEAVQLLGRELQSPRSRAGLSLLGYCYRRLQEFALAAECYEQ
 LGQLHPELEQYRLYQAQALYKACLYPEATRVAFLLLDNPAYHSRVLRLQAAIKYSEGDLPGSRSLVEQLL
 SGEGGEESGGDNETDQQVNLGCLLYKEGQYEAACSKFSATLQASGYQPDLSYNLALAYSSRQYASALKH
 IAEIIERGIHQPELGVGMTTEGFDVRSVGNLVLHQTALVEAFNLKAAIEYQLRNYEVAQETLTDMPPR
 AEEELDVPVTLHNQALMNMDARPTGFEKLFLLQQNPFPPETFGNLLLLYCKYEYFDLAADVLAENAHLT
 YKFLTPYLYDFLDALITCQTAPEEAFIKLDGLAGMLTEQLRRLTKQVQEARHNRDDEAIKKAVNEYDETM
 EKYIPVMAQAKIYWNLENYPMVEKIFRKSVEFCNDHDVWKLNVAVHVFMQENKYKEAIGFYEPYVKKHY
 DNILNVSIAIVLANLCSVYIMTSQNEEAELMRKIEKEEQQLSYDDPNRKMVHLCIVNLVIGTLCAKAGNY
 EFGISRVIKSLEPYNKRLGTDTWYAKRCFLSLENMSKHMIVIHDSVIQECVQFLGHCELYGTNIPAVI
 EQPLEEERMHVGNKNTVTDESRQLKALIYEIIGWNK

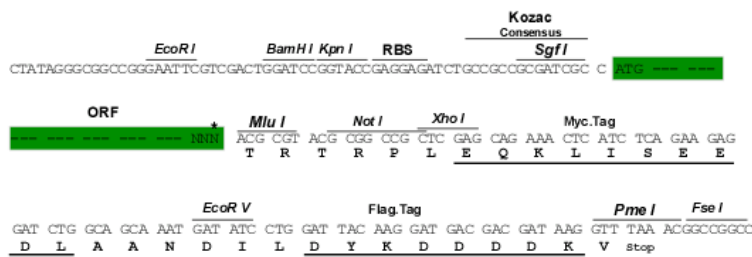
TRTRPLEQKLISEEDLANDILDYKDDDDKV

Chromatograms: https://cdn.origene.com/chromatograms/mk6339_h09.zip

Restriction Sites: SgfI-MluI

Cloning Scheme:

Cloning sites used for ORF Shuttling:



* The last codon before the Stop codon of the ORF

ACCN: NM_152275

ORF Size: 1995 bp

OTI Disclaimer: The molecular sequence of this clone aligns with the gene accession number as a point of reference only. However, individual transcript sequences of the same gene can differ through naturally occurring variations (e.g. polymorphisms), each with its own valid existence. This clone is substantially in agreement with the reference, but a complete review of all prevailing variants is recommended prior to use. [More info](#)

OTI Annotation: This clone was engineered to express the complete ORF with an expression tag. Expression varies depending on the nature of the gene.

Components: The ORF clone is ion-exchange column purified and shipped in a 2D barcoded Matrix tube containing 10ug of transfection-ready, dried plasmid DNA (reconstitute with 100 ul of water).

Reconstitution Method:

1. Centrifuge at 5,000xg for 5min.
2. Carefully open the tube and add 100ul of sterile water to dissolve the DNA.
3. Close the tube and incubate for 10 minutes at room temperature.
4. Briefly vortex the tube and then do a quick spin (less than 5000xg) to concentrate the liquid at the bottom.
5. Store the suspended plasmid at -20°C. The DNA is stable for at least one year from date of shipping when stored at -20°C.

RefSeq: [NM_152275.4](#)

RefSeq Size: 4686 bp

RefSeq ORF: 1998 bp

Locus ID: 92104

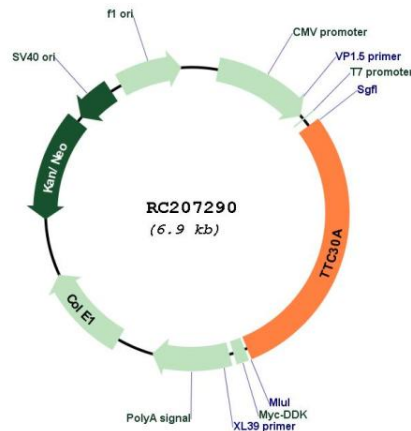
UniProt ID: [Q86WT1](#)

Cytogenetics: 2q31.2

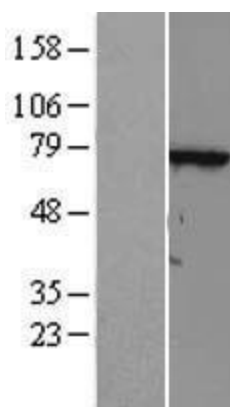
MW: 76.2 kDa

Gene Summary: Required for polyglutamylation of axonemal tubulin. Plays a role in anterograde intraflagellar transport (IFT), the process by which cilia precursors are transported from the base of the cilium to the site of their incorporation at the tip.[UniProtKB/Swiss-Prot Function]

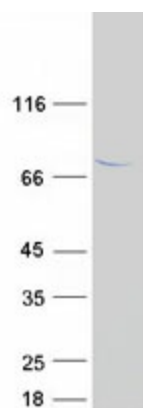
Product images:



Circular map for RC207290



Western blot validation of overexpression lysate (Cat# [LY407696]) using anti-DDK antibody (Cat# [TA50011-100]). Left: Cell lysates from untransfected HEK293T cells; Right: Cell lysates from HEK293T cells transfected with RC207290 using transfection reagent MegaTran 2.0 (Cat# [TT210002]).



Coomassie blue staining of purified TTC30A protein (Cat# [TP307290]). The protein was produced from HEK293T cells transfected with TTC30A cDNA clone (Cat# RC207290) using MegaTran 2.0 (Cat# [TT210002]).