

Product datasheet for **RC207289**

LZTFL1 (NM_020347) Human Tagged ORF Clone

Product data:

Product Type:	Expression Plasmids
Product Name:	LZTFL1 (NM_020347) Human Tagged ORF Clone
Tag:	Myc-DDK
Symbol:	LZTFL1
Synonyms:	BBS17
Mammalian Cell Selection:	Neomycin
Vector:	pCMV6-Entry (PS100001)
E. coli Selection:	Kanamycin (25 ug/mL)
ORF Nucleotide Sequence:	>RC207289 ORF sequence Red=Cloning site Blue=ORF Green=Tags(s)

TTTTGTAATACGACTCACTATAGGGCGCCGGGAATTCGTCGACTGGATCCGGTACCGAGGAGATCTGCC
GCC**CGATCGCC**

ATGGCAGAGTTGGGCCTAAATGAGCACCATCAAATGAAGTTATTAATTATATGCGTTTTGCTCGTTCAA
AGAGAGGCTTGAGACTCAAACCTGTAGATTCCTGCTTCCAAGACCTCAAGGAGAGCAGGCTGGTGGAGGA
CACCTTCACCATAGATGAAGTCTCTGAAGTCTCAATGGATTACAAGCTGTGGTTCATAGTGAGGTGAA
TCTGAGCTCATCAACACTGCCTATACCAATGTGTTACTTCTGCGACAGCTGTTTGCACAAGCTGAGAAGT
GGTATCTTAAGCTACAGACAGACATCTCTGAACCTGAAAACCGAGAATTATTAGAACAAGTGCAGAATT
TGAAAAAGCAGAGATTACATCTTCAAACAAAAGCCCATCTTAGATGTCACAAAGCCAAAACCTTGCTCCA
CTTAATGAAGGTGGAACAGCAGAACTCCTAAACAAGGAAATTTAAGACTTCAAGAAGAGAATGAGAAAT
TGAAGTCAAGGTTGAAGACCATGAAATACAGGCTACAAATGCACTGGATGAAAAGTCAAACCTAGAAAA
AGCACTGCAAGATTTACAGCTTGATCAAGGAAATCAAAGGATTTTATAAAGGCCCAAGACTTAAGTAAC
TTAGAAAAACACTGTCGCTGCCTAAAGAGTGAGTTTCAGAAGACACTTAATGACAAGACAGAAAACCAGA
AGTCACTGGAGGAGAATCTGGCGACAGCCAAGCAGCATCTACTCAGGTTTCAGGAGCAGCTGCACATGCC
TGAAAAGGAATTAGAAAAGAAATTTAGCAAAACAGCAGCTTATCGAAACATGAAAAGAGATCTTACCAAG
AGAATGACCAAATCAAAGATCTGAGGAAAAGACTGGCACAATATGAACCTGAAGAT

ACGCGTACGCGGCCGCTCGAGCAGAAACTCATCTCAGAAGAGGATCTGGCAGCAAATGATATCCTGGATT
ACAAGGATGACGACGATAAGGTTTAA



[View online »](#)

Protein Sequence: >RC207289 protein sequence
Red=Cloning site Green=Tags(s)

MAELGLNEHHQNEVINYMRFARSKRGLRLKTVDSFCQDLKESRLVEDTFTIDEVSEVLNGLQAVVHSEVE
 SELINTAYTNVLLLRQLFAQAEKWYLKLTQDISELENRELLEQVAEFKAEITSSNKKPILDVTKPKLAP
 LNEGGAELLNKEILRLQEENEKLSRLKTIETIQATNALDEKSKLEKALQDLQLDQGNQKDFIKAQDLSN
 LENTVAALKSEFQKTLNDKTENQKSLEENLATAKHDLLRVQEQQLHMAEKELEKKFQQTAAYRNMKEILTK
 KNDQIKDLRKRRLAQYEPED

TRTRPLEQKLISEEDLAANDILDYKDDDDKV

Chromatograms: https://cdn.origene.com/chromatograms/mk6515_b09.zip

Restriction Sites: SgfI-MluI

Cloning Scheme:

Cloning sites used for ORF Shuttling:



* The last codon before the Stop codon of the ORF

ACCN: NM_020347

ORF Size: 897 bp

OTI Disclaimer: The molecular sequence of this clone aligns with the gene accession number as a point of reference only. However, individual transcript sequences of the same gene can differ through naturally occurring variations (e.g. polymorphisms), each with its own valid existence. This clone is substantially in agreement with the reference, but a complete review of all prevailing variants is recommended prior to use. [More info](#)

OTI Annotation: This clone was engineered to express the complete ORF with an expression tag. Expression varies depending on the nature of the gene.

Components: The ORF clone is ion-exchange column purified and shipped in a 2D barcoded Matrix tube containing 10ug of transfection-ready, dried plasmid DNA (reconstitute with 100 ul of water).

Reconstitution Method:

1. Centrifuge at 5,000xg for 5min.
2. Carefully open the tube and add 100ul of sterile water to dissolve the DNA.
3. Close the tube and incubate for 10 minutes at room temperature.
4. Briefly vortex the tube and then do a quick spin (less than 5000xg) to concentrate the liquid at the bottom.
5. Store the suspended plasmid at -20°C. The DNA is stable for at least one year from date of shipping when stored at -20°C.

Note: Plasmids are not sterile. For experiments where strict sterility is required, filtration with 0.22um filter is required.

RefSeq: [NM_020347.4](#)

RefSeq Size: 4075 bp

RefSeq ORF: 900 bp

Locus ID: 54585

UniProt ID: [Q9NQ48](#)

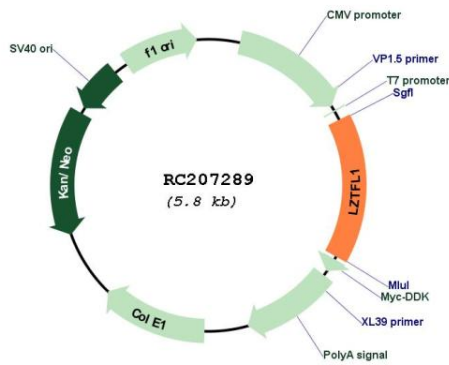
Cytogenetics: 3p21.31

Protein Families: Transcription Factors

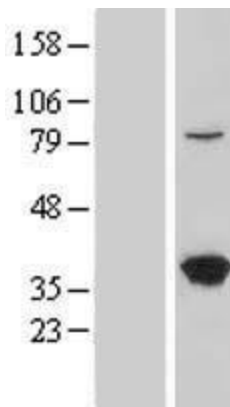
MW: 34.6 kDa

Gene Summary: This gene encodes a ubiquitously expressed protein that localizes to the cytoplasm. This protein interacts with Bardet-Biedl Syndrome (BBS) proteins and, through its interaction with BBS protein complexes, regulates protein trafficking to the ciliary membrane. Nonsense mutations in this gene cause a form of Bardet-Biedl Syndrome; a ciliopathy characterized in part by polydactyly, obesity, cognitive impairment, hypogonadism, and kidney failure. This gene may also function as a tumor suppressor; possibly by interacting with E-cadherin and the actin cytoskeleton and thereby regulating the transition of epithelial cells to mesenchymal cells. [provided by RefSeq, Aug 2020]

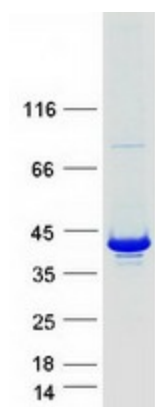
Product images:



Circular map for RC207289



Western blot validation of overexpression lysate (Cat# [LY412543]) using anti-DDK antibody (Cat# [TA50011-100]). Left: Cell lysates from untransfected HEK293T cells; Right: Cell lysates from HEK293T cells transfected with RC207289 using transfection reagent MegaTran 2.0 (Cat# [TT210002]).



Coomassie blue staining of purified LZTFL1 protein (Cat# [TP307289]). The protein was produced from HEK293T cells transfected with LZTFL1 cDNA clone (Cat# RC207289) using MegaTran 2.0 (Cat# [TT210002]).