

Product datasheet for **RC207288**

JAZF1 (NM_175061) Human Tagged ORF Clone

Product data:

Product Type:	Expression Plasmids
Product Name:	JAZF1 (NM_175061) Human Tagged ORF Clone
Tag:	Myc-DDK
Symbol:	JAZF1
Synonyms:	TIP27; ZNF802
Mammalian Cell Selection:	Neomycin
Vector:	pCMV6-Entry (PS100001)
E. coli Selection:	Kanamycin (25 ug/mL)
ORF Nucleotide Sequence:	>RC207288 ORF sequence Red=Cloning site Blue=ORF Green=Tags(s)

TTTTGTAATACGACTCACTATAGGGCGCCGGGAATTCGTCGACTGGATCCGGTACCGAGGAGATCTGCC
GCC**CGATCGCC**

ATGACAGGCATCGCCGCCCTCTTCTTCTCCAATACCTGCCGATTCGGGGCTGCGGACTCCACTTCC
CCACCCTGGCCGACCTCATCGAGCACATCGAGGACAACCACATCGATACAGATCCACGGTTTTAGAAAA
ACAAGAATTACAGCAGCCAACCTATGTTGCCCTGAGTTACATAAATAGATTCATGACAGATGCTGCCCGC
CGAGAGCAGGAGTCCCTAAAGAAGAAGATTCAGCCGAAGCTCTCGCTGACTCTGTCCAGCTCAGTGTCTC
GAGGGAATGTGTCCACTCCCCACGCCACAGCAGTGAAGCCTTACTCCCCCGTGACCCACCCATCAC
CCCTCCTCTTATTCCGCAGCAGCACTCCGACAGGCAGCGAGTATGGCGAGGAGGAGGTGGACTATGAG
GAGTCGGACAGCGATGAGTCCTGGACCACAGAGAGTGCCATCAGCTCCGAAGCCATCCTCAGCTCCATGT
GCATGAATGGAGGGGAAGAGAAGCCTTTTGCCTGCCAGTTTCTGGATGTAAAAAGAGATACAAGAATGT
GAATGGCATAAAGTATCACGCTAAGAAATGGTCACAGAACACAGATTCGTGTCCGCAAACCAATTCAAGTGT
CGCTGTGGGAAGAGTTACAAGACAGCTCAGGGCCTGCGGCACCACACAATCAATTTCCATCCCCGGTGT
CGGCTGAGATTATCAGGAAGATGCAGCAA

ACGCGTACGCGGCCGCTCGAGCAGAACTCATCTCAGAAGAGGATCTGGCAGCAAATGATATCCTGGATT
ACAAGGATGACGACGATAAGGTTTAA



[View online »](#)

Protein Sequence: >RC207288 protein sequence
 Red=Cloning site Green=Tags(s)

MTGIAAASFFSNTCRFGGCGLHFPTLADLIEHIEDNHIDTDPVLEKQELQQPTYVALSYINRFMTDAAR
 REQESLKKKIQPKLSLTLSSSVSRGNVSTPPRHSSGSLTPPVTPPITPSSSFRSSTPTGSEYGEEDVDYE
 ESDSDESWTTESAISSEAILSSMCMNGGEEKPFACPVPGCKKRYKNVNGIKYHAKNGHRTQIRVRKPFKC
 RCGKSYKTAQGLRHHTINFHPPVSAEIIIRKMQQ

TRTRPLEQKLISEEDLAANDILDYKDDDDKV

Chromatograms: https://cdn.origene.com/chromatograms/mk6341_a05.zip

Restriction Sites: SgfI-MluI

Cloning Scheme:

Cloning sites used for ORF Shuttling:



* The last codon before the Stop codon of the ORF

ACCN: NM_175061

ORF Size: 729 bp

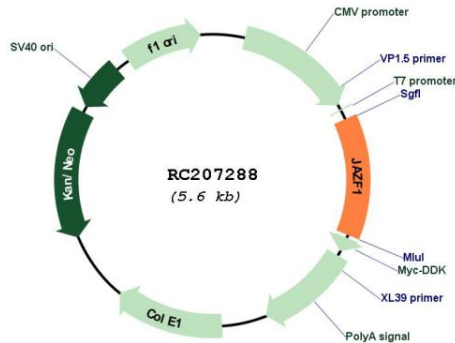
OTI Disclaimer: Due to the inherent nature of this plasmid, standard methods to replicate additional amounts of DNA in E. coli are highly likely to result in mutations and/or rearrangements. Therefore, OriGene does not guarantee the capability to replicate this plasmid DNA. Additional amounts of DNA can be purchased from OriGene with batch-specific, full-sequence verification at a reduced cost. Please contact our customer care team at custsupport@origene.com or by calling 301.340.3188 option 3 for pricing and delivery.

The molecular sequence of this clone aligns with the gene accession number as a point of reference only. However, individual transcript sequences of the same gene can differ through naturally occurring variations (e.g. polymorphisms), each with its own valid existence. This clone is substantially in agreement with the reference, but a complete review of all prevailing variants is recommended prior to use. [More info](#)

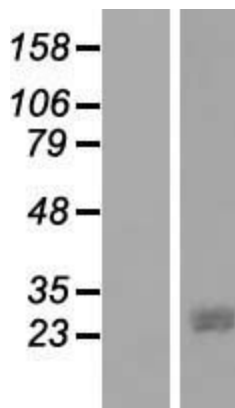
OTI Annotation: This clone was engineered to express the complete ORF with an expression tag. Expression varies depending on the nature of the gene.

Components:	The ORF clone is ion-exchange column purified and shipped in a 2D barcoded Matrix tube containing 10ug of transfection-ready, dried plasmid DNA (reconstitute with 100 ul of water).
Reconstitution Method:	<ol style="list-style-type: none">1. Centrifuge at 5,000xg for 5min.2. Carefully open the tube and add 100ul of sterile water to dissolve the DNA.3. Close the tube and incubate for 10 minutes at room temperature.4. Briefly vortex the tube and then do a quick spin (less than 5000xg) to concentrate the liquid at the bottom.5. Store the suspended plasmid at -20°C. The DNA is stable for at least one year from date of shipping when stored at -20°C.
Note:	Plasmids are not sterile. For experiments where strict sterility is required, filtration with 0.22um filter is required.
RefSeq:	<u>NM_175061.2, NP_778231.1</u>
RefSeq Size:	3210 bp
RefSeq ORF:	732 bp
Locus ID:	221895
UniProt ID:	<u>Q86VZ6</u>
Cytogenetics:	7p15.2-p15.1
Protein Families:	Druggable Genome, Transcription Factors
MW:	27 kDa
Gene Summary:	This gene encodes a nuclear protein with three C2H2-type zinc fingers, and functions as a transcriptional repressor. Chromosomal aberrations involving this gene are associated with endometrial stromal tumors. Alternatively spliced variants which encode different protein isoforms have been described; however, not all variants have been fully characterized [provided by RefSeq, Jul 2008]

Product images:



Circular map for RC207288



Western blot validation of overexpression lysate (Cat# [LY406301]) using anti-DDK antibody (Cat# [TA50011-100]). Left: Cell lysates from untransfected HEK293T cells; Right: Cell lysates from HEK293T cells transfected with RC207288 using transfection reagent MegaTran 2.0 (Cat# [TT210002]).