

Product datasheet for **RC207281**

PASD1 (NM_173493) Human Tagged ORF Clone

Product data:

Product Type:	Expression Plasmids
Product Name:	PASD1 (NM_173493) Human Tagged ORF Clone
Tag:	Myc-DDK
Symbol:	PASD1
Synonyms:	CT63; CT64; OXTES1
Mammalian Cell Selection:	Neomycin
Vector:	pCMV6-Entry (PS100001)
E. coli Selection:	Kanamycin (25 ug/mL)



[View online »](#)

ORF Nucleotide
Sequence:

>RC207281 ORF sequence
Red=Cloning site Blue=ORF Green=Tags(s)

TTTTGTAATACGACTCACTATAGGGCGGCCGGGAATTCGTCGACTGGATCCGGTACCGAGGAGATCTGCC
GCC**CGGATCGCC**

ATGAAGATGAGAGGGGAAAAGAGAAGAGACAAGGTCAATCCAAAAAGCTCTCAAAGGAAATTAACCTGGA
TTCATCATTTCTACCTATGATTACTTCAACCAAGTGACGCTACAGTTATTAGATGGCTTTATGATTAC
ACTGAGCACAGATGGAGTGATCATTGTGTGGCTGAAAACATCTCTTCTCTTCTGGACATTTACCAGT
GAGATTGTGGGCAAAAAATTATTAAGCCTTCTGCCTGATGAAGAGAAAGATGAAGTCTACAAAAGATTA
TTCTCAAATTTCTTTACTAAACTCAGAAACACATATTGAATTTTGTGTGCTTTAAAAAGAGGAAATGT
CGAACATGGTGATAGTTCTGCTTACGAAAACGTGAAATTTATTGTGAATGAAGAGATATTTGTAATGAG
TTTCTGTGGTCTTTAGTGGCTTGTTCAGCCACCTCTGTGCTGACTTTGCTGCATGTGTTCTCAGG
AGGATCGGCTTTATCTTGTGGGAAATGTTTGCATTCTCAGGACTCAGCTCCTGCAGCAACTTTACACTTC
AAAGGCAGTCAGTGATGAAGCTGTACTACACAAGATTCAGATGAGGAACCTTTTGTGGGAGAGCTCAGT
AGCTCTCAAGGTCAAAGAGGACACACTAGCATGAAAGCCGTGTACGTTGAACCCGCTGCTGCTGCTGCTG
CTGCTGCTATCTCAGACGACCAATGATATTGCAGAGGTTGAGCAGTATGGACCACAAGAAAACGTTCA
CATGTTTGTAGATTCTGATTCAACTTATTGCTCCAGTACAGTTTTCTGGATACTATGCCTGAATCTCCA
GCCTTATCCTTGAAGACTTTTCGAGGTGAGCCTGAGGTGAATCCATTGTACAGGGCAGACCCAGTGGACC
TGGAGTTCTCGGTGGATCAGGTGGACTCAGTGGACCAGGAGGGCCCAATGGACCAGCAGGACCCAGAGAA
CCCAGTTGCCCGTTGGACCAGGCAGCCTGATGGATCCAGTGGATCCAGAGGACTCAGTGGACCTGGGG
GCTGCTGGCGCAAGTGCTCAGCCATTACAGCCATCATCACCAGTTGCATATGACATCATTAGCCAGGAA
TGGAACTGATGAAGAAGTTGAAGGAGCAGCTAGAAGAGAGGACTTGGTTGCTGCATGATGCCATCCAAAA
CCAGCAGAATGCATTGGAATTGATGATGGATCACCTTCAGAAGCAGCCAAACACATTACGCCACGTTGTC
ATTCTGATCTCCAATCTTCGGAGGCAAGTGCCTCAAGAAACAACAGAAAACAACACGCTGGGCAAGTGAAGC
GGCCTCTCCACATCCCAAGGACGTCAAGTGTCTGTGGTTTATCTTTATCCAACCTCTCTCAAAAAAC
TGGGGAGCTTCAGGAGCCTTGTGTTGCCTTCAACCAGCAGCAACTGGTGCAGCAAGAACAACACCTGAAG
GAGCAGCAGCGGACGCTGCGGGAGCAGCTGCAACAGCTGAGAGAGCAAAGGAAGTGCAGAAGCAGAAGA
AGATGCAGGAGAAGAAGAAGCTGCAGGAGCAGAAAATGCAGGAGAAGAAGAAGTGCAGGAGCAGAGGCG
GCAAAAGAAGAAGAAGCTACAGGAGCGGAAGAAGTGGCAGGGCAGATGCTACAGAAAGAGCCAGAGGAG
GAGCAGCAGAAGCAGCAGCTGCAAGAGCAGCCACTGAAGCATAATGTCATCGTGGGAATGAGAGGGTGC
AGATATGCCTGCAAAACCCACGTGACGTATCTGTGCCCTCTGCAATCACCTGTTAGATTTTTACAGGC
CCAACCCATTGTTCTGTCCAGAGAGCAGCTGAACAACAGCCCTCTGGCTTCTATCAAGATGAAAACGT
GGGCAACAGGAAGATGAGAGTCAAAGTTTTTATCCTGAGGCGTATCAAGGGCCCCCGTGAACAGCTGC
CATTGATAGATACCTCAAACCTGAGGCAATTTCTTCTCCAGCATTCTCAGTTTCCATAAAGTTCAGA
CTCAACCATAAGCACCTGGAGACCCACAGGATTACATCCGGCTTTGGCAAGAGTTGTCTGATTCACTC
GGTCTGTTGTCCAAGTGAACACTTGGTCTTGCATGAGCAGGGCACCTGCACGGCCAACCCACCTACC
ATCAGGTGCAAGTTTCTGAGGTAGGAGTCGAGGGACCTCTGATCCACAGGCTTTCCAAGGCCCTGCTGC
ATACCAGCCAGACCAGATGAGATCTGCGGAGCAGACCAGATTGATGCCTGCAGAGCAACGTGACTCAAAT
AAGCCGTGC

ACGCGTACGCGGCCGCTCGAGCAGAAACTCATCTCAGAAGAGGATCTGGCAGCAAATGATATCCTGGATT
ACAAGGATGACGACGATAAGGTTTAA

Protein Sequence: >RC207281 protein sequence
Red=Cloning site Green=Tags(s)

MKMRGEKRRDKVNPSSQRKLNWIPSPFTYDFNQVTLQLLDGFMITLSTDGVIICVAENISSLLGHLPA
EIVGKLLSLLPDEEKDEVYQKIIILKFLLNSETHEFCCHLKRGNVEHGDSSAYENVKFIVNVRDICNE
FPVVFSGLFSSHLCAADFACVPQEDRLYLVGNCILRTQLLQQLYTSKAVSDEAVLTQDSDEEFPVGLS
SSQGQRGHTSMKAVYVEPAAAAAAAAISDDQIDIAEVEQYGPQENVHMFVSDSTYCSSTVFLDTMPESP
ALSLQDFRGEPEVNPLYRADPVDFSVQVDSVDQEGPMDQDPENPVAPLDQAGLMDPVPEDSVDLG
AAGASAPLQPSSPVAYDIIISQELLMKKLKEQLEERTWLLHDAIQNQNALELMMDHLQKQPNTLRHV
IPDLQSSEAVPKKQKQHAGQVKRPLPHPKDVKCFGLSLSNSLKNTGELQEPVAFNQQQLVQQEQHLK
EQQRQLREQLQLREQRKVQKQKMQEKKKLQEQKMQEKKKLQEQRRQKKKKLQERKKWQGMLQKEPEE
EQKQQLQEQPLKHNVI VGNERVQICLQNPDRVSVPLCNHPVRFQAQPIVPVQRAAEQQPSGFYQDENC
GQQEDESQSFYPEAYQPPVNQLPLIDTSNSEAIISSSIPQFPITSDSTISTLETPQDYIRLWQELSDSL
GPVVQVNTWSCDEQGLHGQPTYHQVQVSEVGVGPPDPQAFQGPAAAYQPDQMRSAEQTRLMPAEQRDSN
KPC

TRTRPLEQKLISEEDLAANDILDYKDDDDKV

Chromatograms: https://cdn.origene.com/chromatograms/mk6041_a02.zip

Restriction Sites: Sgfl-Mlul

Cloning Scheme:



ACCN: NM_173493

ORF Size: 2319 bp

OTI Disclaimer: The molecular sequence of this clone aligns with the gene accession number as a point of reference only. However, individual transcript sequences of the same gene can differ through naturally occurring variations (e.g. polymorphisms), each with its own valid existence. This clone is substantially in agreement with the reference, but a complete review of all prevailing variants is recommended prior to use. [More info](#)

OTI Annotation: This clone was engineered to express the complete ORF with an expression tag. Expression varies depending on the nature of the gene.

Components: The ORF clone is ion-exchange column purified and shipped in a 2D barcoded Matrix tube containing 10ug of transfection-ready, dried plasmid DNA (reconstitute with 100 ul of water).

Reconstitution Method:

1. Centrifuge at 5,000xg for 5min.
2. Carefully open the tube and add 100ul of sterile water to dissolve the DNA.
3. Close the tube and incubate for 10 minutes at room temperature.
4. Briefly vortex the tube and then do a quick spin (less than 5000xg) to concentrate the liquid at the bottom.
5. Store the suspended plasmid at -20°C. The DNA is stable for at least one year from date of shipping when stored at -20°C.

RefSeq: [NM_173493.3](#)

RefSeq Size: 3250 bp

RefSeq ORF: 2322 bp

Locus ID: 139135

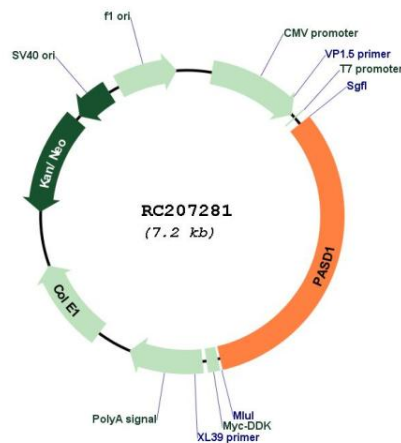
UniProt ID: [Q8IV76](#)

Cytogenetics: Xq28

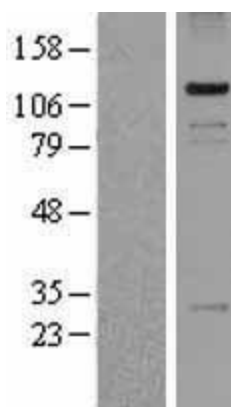
MW: 87.4 kDa

Gene Summary: This gene encodes a protein that is thought to function as a transcription factor. The protein is a cancer-associated antigen that can stimulate autologous T-cell responses, and it is therefore considered to be a potential immunotherapeutic target for the treatment of various hematopoietic malignancies, including diffuse large B-cell lymphoma. [provided by RefSeq, May 2010]

Product images:



Circular map for RC207281



Western blot validation of overexpression lysate (Cat# [LY403556]) using anti-DDK antibody (Cat# [TA50011-100]). Left: Cell lysates from untransfected HEK293T cells; Right: Cell lysates from HEK293T cells transfected with RC207281 using transfection reagent MegaTran 2.0 (Cat# [TT210002]).