

Product datasheet for **RC207272**

ZDHHC23 (NM_173570) Human Tagged ORF Clone

Product data:

Product Type:	Expression Plasmids
Product Name:	ZDHHC23 (NM_173570) Human Tagged ORF Clone
Tag:	Myc-DDK
Symbol:	ZDHHC23
Synonyms:	DHHC-23; NIDD
Mammalian Cell Selection:	Neomycin
Vector:	pCMV6-Entry (PS100001)
E. coli Selection:	Kanamycin (25 ug/mL)
ORF Nucleotide Sequence:	>RC207272 ORF sequence Red=Cloning site Blue=ORF Green=Tags(s)

TTTTGTAATACGACTCACTATAGGGCGGCCGGAATTCGTCGACTGGATCCGGTACCGAGGAGATCTGCC
GCC**CGATCGCC**

ATGACACAGAAGGGCAGTATGAAGCCTGTGAAGAAAAGAAAACCGAAGAACCTGAATTGGAGCCCTGT
GCTGCTGCGAGTACATAGATCGGAATGGGAAAAGAACCACGTGGCTACTTGTGGTGTGATTGTCAAGA
TCTGGATGAAGGGTGTGATCGATGGATTACATGTAATCTTTACAGCCAGAGACTGTGAAAGAATCATG
GATAACAATTTCTGATCGCCTCCGAATTCCTTGGCTTAGGGGAGCCAAAAAAGTGAACATCAGCATCATCC
CTCCGCTTGTCTGCTGCCTGTCTTCTTCATGTGGCTTCTGGCATTTCCTCCTGGGGTGGTGGTTTT
GACCTCCCTTCTGTGCTGGCACTGTGGTACTACTACCTCACTAACAGAAGGAAAGAACAGACCCCTGTT
TTCTGAGCCTTGGACTGTTCTCTCTGGCTACATGTAATATGTGTTCTGCAGGAAGTGGTCCCAAAG
GGCGTGTGGGTCCCGTTCAGCTGGCGGTTCTTACCTGCGGTTATTTCTGATACTCTTAGCCTTGACAG
AGCCAAGAAGAAATCCAGGCTACCTCAGCAATCCAGCAAGCGGTGACAGATCTCTAAGCAGCAGCCAGCTG
GAGTGCTGAGCAGAAAAGGGCAGGAGAAGGCCAAAGGGTTCCTGGGGCAGACATGTGGGCAGTCTCA
ACAATCGACAACAAAGGATGACCCCAAGGGCTTCCAAGATGCCAGCTGGAAGCCCCACAAAGCGAA
GGAGGACTGGTGTGCAAGTGCCAGCTGGTGCACAGCCCGGCATGGCGCTGCCGATATGTGGCAGT
TGTGTGAGGAGAATGGATCATCATTTGTCTGGATAAATAGCTGGCTGGAGAATCAAATCATCAAGCAT
TTATACTTGCCCTTTTGATCTTCTTGTCTCACCTCGGTGTATGGGATCACACTGACCTGGACACCATTTG
TAGAGACAGAAGTGTCTTACAGCTCTTTTCTATTGCTCCTGGAGTTTATGCAAATTACAGCTCGGCTCTG
TCCTTACCTGCGTGTGGTACTCTGTGATCATCACAGCAGGCATGGCCTACATCTTCTGATCCAGCTGA
TCAACATCAGCTACAATGTGACTGAGCGGGAAGTCCAGCAGGCCCTCCGACAGAAGACTGGGCGCCGGCT
CCTCTGCGGGCTCATCGTGGACACAGGGTACTTGGA

AG**CGGACCG**ACGCGTACGCGGCCGCTCGAGCAGAACTCATCTCAGAAGAGGATCTGGCAGCAAATGATATCC
TGGATTACAAGGATGACGACGATAAGGTTTAA



Protein Sequence: >RC207272 protein sequence
Red=Cloning site Green=Tags(s)

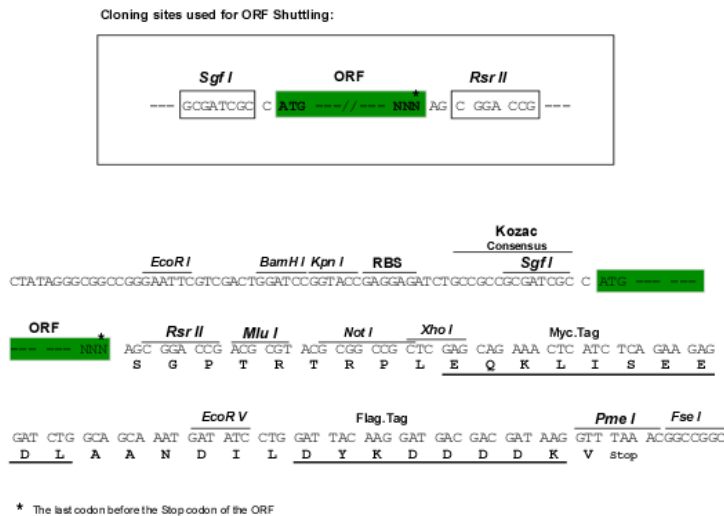
MTQKGSMPVKKKKTEEPELEPLCCCEYIDRNGEKNHVATCLCDCQDLDEGCDRWITCKSLQPETCERIM
 DTISDRLRIPWLRGAKKVNISIIPLVLLPVFLHVASWHFLLGVVVLTSPLVLALWYYL TNRKEQTLF
 FLSLGLFSLGYMYVFLQEVVPKGRVGPVQLAVLTCGLFILLALHRAKKNPGYLSNPASGDRSLSSSQL
 ECLSRKGQEKAGFPADMSGSLNNRTTKDDPKGSSKMPAGSPTKAKEDWCAKCCQLVRPARAWRCRICGI
 CVRRMDHHCVWINSVCVGESNHQAFILALLIFLLTSVYGITLTLDTICRDRSVFTALFYCPGVYANYSSAL
 SFTCVWYSVIITAGMAYIFLIQLINISYNVTEREVQALRQKTGRRLCGLIVDTGLLG

SGPTRTRPLEQKLI SEEDLAANDILDYKDDDDKV

Chromatograms: https://cdn.origene.com/chromatograms/mk6619_b04.zip

Restriction Sites: SgfI-RsrII

Cloning Scheme:



ACCN: NM_173570

ORF Size: 1227 bp

OTI Disclaimer: The molecular sequence of this clone aligns with the gene accession number as a point of reference only. However, individual transcript sequences of the same gene can differ through naturally occurring variations (e.g. polymorphisms), each with its own valid existence. This clone is substantially in agreement with the reference, but a complete review of all prevailing variants is recommended prior to use. [More info](#)

OTI Annotation: This clone was engineered to express the complete ORF with an expression tag. Expression varies depending on the nature of the gene.

Components: The ORF clone is ion-exchange column purified and shipped in a 2D barcoded Matrix tube containing 10ug of transfection-ready, dried plasmid DNA (reconstitute with 100 ul of water).

Reconstitution Method:

1. Centrifuge at 5,000xg for 5min.
2. Carefully open the tube and add 100ul of sterile water to dissolve the DNA.
3. Close the tube and incubate for 10 minutes at room temperature.
4. Briefly vortex the tube and then do a quick spin (less than 5000xg) to concentrate the liquid at the bottom.
5. Store the suspended plasmid at -20°C. The DNA is stable for at least one year from date of shipping when stored at -20°C.

RefSeq: [NM_173570.5](#)

RefSeq Size: 3778 bp

RefSeq ORF: 1230 bp

Locus ID: 254887

UniProt ID: [Q8IYP9](#)

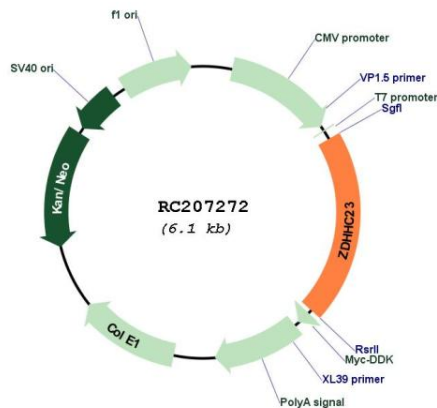
Cytogenetics: 3q13.31

Protein Families: Transmembrane

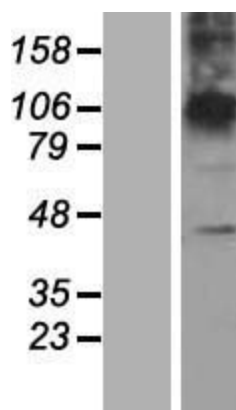
MW: 45.9 kDa

Gene Summary: Palmitoyltransferase that mediates palmitoylation of KCNMA1, regulating localization of KCNMA1 to the plasma membrane. May be involved in NOS1 regulation and targeting to the synaptic membrane.[UniProtKB/Swiss-Prot Function]

Product images:



Circular map for RC207272



Western blot validation of overexpression lysate (Cat# [LY406481]) using anti-DDK antibody (Cat# [TA50011-100]). Left: Cell lysates from untransfected HEK293T cells; Right: Cell lysates from HEK293T cells transfected with RC207272 using transfection reagent MegaTran 2.0 (Cat# [TT210002]).