

Product datasheet for **RC207270**

C14orf45 (BBOF1) (NM_025057) Human Tagged ORF Clone

Product data:

Product Type:	Expression Plasmids
Product Name:	C14orf45 (BBOF1) (NM_025057) Human Tagged ORF Clone
Tag:	Myc-DDK
Symbol:	C14orf45
Synonyms:	C14orf45; CCDC176; FBB10
Mammalian Cell Selection:	Neomycin
Vector:	pCMV6-Entry (PS100001)
E. coli Selection:	Kanamycin (25 ug/mL)



[View online »](#)

ORF Nucleotide Sequence:

>RC207270 representing NM_025057
 Red=Cloning site Blue=ORF Green=Tags(s)

TTTTGTAATACGACTCACTATAGGGCGGCCGGAATTCGTCGACTGGATCCGGTACCGAGGAGATCTGCC
 GCC**CGCATCGCC**

ATGCCGTCGAAGGAAAGGACAAAAAGAAAGGCAAGAGCAAAGGCAAAGACACGAAGAAGTTAATAAAAA
 CAGATGAATCTGTGGTGACAGACCAAGGCCAATGCCTCCCTTTGGGAGGCCAGGTTGGAAGTCACAGA
 ACTCTCTAGGATTAAGTATCGTGACTTCCACGGATACTGGCAAAAAGTAAAGGACTTAAAGAAAAAG
 CAATGTAAAATGGAGAAAGACATAATGTCAAGTAAAGTTACCTGAAGAAGCAGGATCAGGAGAAAGATA
 ATATGATTGAAAACTGAAACAGCAATTAATGAAACAAAGGAAAAAGCCCAAGAGGAGAAGGATAAATT
 GGAACAAAAGTATACCAGGCAAATTAATGAACTAGAGGGACAGTCCATCAAAAAGCCAAAGAAATTGGC
 ATGATTCACACAGAGCTGAAAGCAGTAAGACAATTCAGAAGAGAAAAATCCAAGTGAGAGAGAGTTAG
 ATGATCTGAAAGAGAATTAAGAAACACAGAGCGGATACATCAGGAGACTCTTAGAAGACTGGAAGCAG
 ATTTTTGAAGAAAAGCACCGACTAGAACAAGAGGCTGAAAAGAAGATAATAATGCTAGCAGAGAGAGCC
 CACCATGAGGCTATTGTGCAATTGAACGATGCTGGAAGAAATGTTTTAAAGAGAATGATTATCTTCAGA
 AAGCTCTGGCATATCACCTGAAGGAAACTGACGCTCTACAAAAAACTCCAGAAGTTGCAAGAGAGTCA
 TACTTTACTTTTACATCAAAAGGAGATCAATGATCTGTTGGTTAAGGAAAAGATTATGCAACTTGTCCAG
 CAGAGATCACAAATCCAAACCCTTCAGAAGAAGGTAGTAACTTGGAGACTGCTCTGAGTTACATGACCA
 AAGAGTTTGAGAGTGAAGTTTTAAACTGCAGCAACACGCAATGATAGAGAACCAAGCAGGTCAGGTAGA
 AATTGACAAGCTGCAGCACCTTCTTCAGATGAAGGACAGGAAAATGAATCGTGTGAAGAAGCTGGCCAAG
 AACATACTGGATGAGAGAACAGAAGTGGAAAGATTCTTTTTAGATGCTCTGCACCAAGTGAAGCAACAGA
 TCCTAATTAGCAGGAAGCATTATAAGCAGATAGCACAAAGCTGCTTCAATTTAAAAATGAGAGCAGCATG
 TACAGGAAGAACAGAATATCCCAAAATCAGAACATTTGATGGCAGAGAGCACAGCACCAATAGTGTGAAT
 CAGGATCTTCTGGAGGCCGAAAATGGACACATATTGAAGGAAATGTGGATTATTGGAGATT

ACGCGTACGCGGCCGCTCGAGCAGAACTCATCTCAGAAGAGGATCTGGCAGCAATGATATCCTGGATT
 ACAAGGATGACGACGATAAGGTTTAA

Protein Sequence:

>RC207270 representing NM_025057
 Red=Cloning site Green=Tags(s)

MPSKGDKDKKSKGKDKTKLTKTDESVDRAKANASLWEARLEVTELSRIKYRDTSRILAKSNEDLKKK
 QCKMEKDIMSLSYLKKQDQEKDNMIEKLLKQLNETKEKAQEEKDKLEQKYTRQINELEGQFHQKAKEIG
 MIHTELKAVRQFQKRKIQVERELDDLKENLRNTERIHQETLRRLESRFEEKHRLQEAEKKIIMLAERA
 HHEAIVQLNDAGRNVFKENDYLQKALAYHLKETDALQKNSQKLESHLLLLHQKEINDLLVKEIMQLVQ
 QRSQIQLQKVVNLETALSYMTKEFESEVLKLLQQHAMIENQAGQVEIDKLQHLLQMKDREMNRVKKLAK
 NILDERTEVERFFLDALHQVKQIILSRKHQKIAQAAFNLKMRAACTGRTEYPKIRTDFDGRHSTNSVN
 QDLLEAENGHILKEMWILEI

TRTRPLEQKLISEEDLAANDILDYKDDDDKV

Chromatograms:

https://cdn.origene.com/chromatograms/mk6671_e01.zip

Restriction Sites:

SgfI-MluI

Cloning Scheme:


ACCN: NM_025057

ORF Size: 1320 bp

OTI Disclaimer: The molecular sequence of this clone aligns with the gene accession number as a point of reference only. However, individual transcript sequences of the same gene can differ through naturally occurring variations (e.g. polymorphisms), each with its own valid existence. This clone is substantially in agreement with the reference, but a complete review of all prevailing variants is recommended prior to use. [More info](#)

OTI Annotation: This clone was engineered to express the complete ORF with an expression tag. Expression varies depending on the nature of the gene.

Components: The ORF clone is ion-exchange column purified and shipped in a 2D barcoded Matrix tube containing 10ug of transfection-ready, dried plasmid DNA (reconstitute with 100 ul of water).

- Reconstitution Method:**
1. Centrifuge at 5,000xg for 5min.
 2. Carefully open the tube and add 100ul of sterile water to dissolve the DNA.
 3. Close the tube and incubate for 10 minutes at room temperature.
 4. Briefly vortex the tube and then do a quick spin (less than 5000xg) to concentrate the liquid at the bottom.
 5. Store the suspended plasmid at -20°C. The DNA is stable for at least one year from date of shipping when stored at -20°C.

RefSeq Size: 3123 bp

RefSeq ORF: 1590 bp

Locus ID: 80127

UniProt ID: [Q8ND07](#)

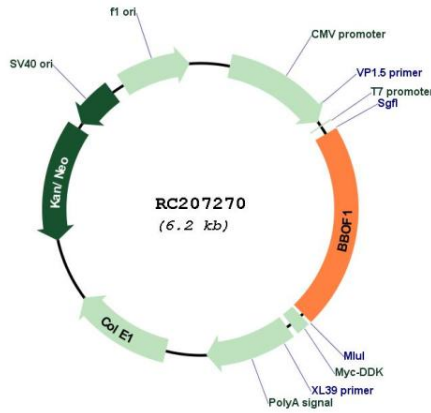
Cytogenetics: 14q24.3

MW: 61.8 kDa

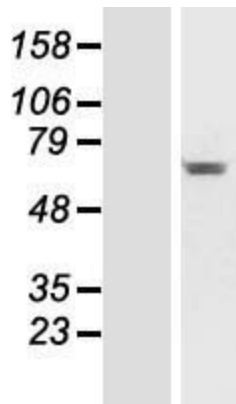
Gene Summary:

Basal body protein required in multiciliate cells to align and maintain cilia orientation in response to flow. May act by mediating a maturation step that stabilizes and aligns cilia orientation. Not required to respond to planar cell polarity (PCP) or flow-based orientation cues (By similarity).[UniProtKB/Swiss-Prot Function]

Product images:



Circular map for RC207270



Western blot validation of overexpression lysate (Cat# [LY410931]) using anti-DDK antibody (Cat# [TA50011-100]). Left: Cell lysates from untransfected HEK293T cells; Right: Cell lysates from HEK293T cells transfected with RC207270 using transfection reagent MegaTran 2.0 (Cat# [TT210002]).