

Product datasheet for **RC207268**

FAM116A (DENND6A) (NM_152678) Human Tagged ORF Clone

Product data:

Product Type:	Expression Plasmids
Product Name:	FAM116A (DENND6A) (NM_152678) Human Tagged ORF Clone
Tag:	Myc-DDK
Symbol:	FAM116A
Synonyms:	AFI1A; FAM116A
Mammalian Cell Selection:	Neomycin
Vector:	pCMV6-Entry (PS100001)
E. coli Selection:	Kanamycin (25 ug/mL)



[View online »](#)

ORF Nucleotide Sequence:

>RC207268 ORF sequence
 Red=Cloning site Blue=ORF Green=Tags(s)

TTTTGTAATACGACTCACTATAGGGCGGCCGGAATTCGTCGACTGGATCCGGTACCGAGGAGATCTGCC
 GCC**CGCATCGCC**

ATGGCTTTGAGGGCCCTGCGGGCTTGGGGCCCGCTCTCGAAGCCGTTGGACGAAGCGTGGCAGGGG
 CCGAGGGCCGCGAGGCGCGGCCCTTGTGGCGGGGAGGCGCGCCAGAGGACGATGAAGAGGACGATGG
 CCGTGGCCGGGGCCTGCTGCGCTGGGACAGCTTCTCCGCCTGGCTGCACTGCGTGTGTGGTGGGCTTC
 GACCTGGAGCTGGGCCAGGCCGTGGAGTAATTTATCCTCAGCATTCCAAACTTACTGACAGAGAAAAA
 CCAATATTTGCTATTTGCTTTTCCAGATTCAAATTCAGGTTGTCTGGAGATACCCAGTTTTGTTTTAG
 ATTTGACAGTCTTCTGGGAGGAGGTGTCGCTGCATTGTCTCCTGGATCAATTTGACAAAGATTTACCA
 GTTTACTTAAAGAAGGATCCTGCTATTTTTATGGATATGTGATTTCCGACAAGTTCGAGATAAAACTC
 TAAAAAGAGGCTACTTTCAGAAGTCCTGGTTTTGATCAGCAAACCTTATATTCATTTTTTTCACAC
 TGTGCTCAAACAGATAGCACCAGAGTATTTGAAAAGAATGAACCTTATTTGGAAGCAGCTTGAATGAT
 GTTGATCGATGGCTGCCAGTCCAGGAAAACATTACACCTGCCAATCATGGGGTGGTAAATGAAGG
 TACGGATTCACATGTCATGACAAGCCTGGGACAACCAATAGTGCAGTTAACTCAGCAGGTGGACAC
 AAATATATCTGTTATTTTACCTACTGTTTCATGAGGTGGATATTTTTCAGGTGTTTCTGCCAGTTTTCTT
 CATAGTCAGATGCTCTGGGAGCTGGTGTGTTGGGGGAGCCCCTTGTGGTTATGGCGCCATCACCATCGG
 AATCATCAGAGACTGTATTGGCACTTGTAACTGTATTTCTCCATTAAGTACTTCAGTGATTTCCGACC
 TTATTTCACTATTCATGATAGTGAATTCAAAGAATACTACCCGTACGCAAGCTCCGCCCTCAGTTATA
 TTAGGATAACCAACCCTTTTTTGCTAAGACACTCCAGCACTGGCCACACATTATTCGAATAGGAGACC
 TTAACCTACAGGTGAAATTCCTAAGCAGTTAAAGTAAAAAACTGAAGAATCTAAAGACTCTGGATTTC
 CAAACCTGGAGTTTATACTTCATATAAGCCATATTTAAATAGAGATGAAGAGATCATAAAACAATTACAG
 AAGGGTGTACAACAGAAACGTCCTTCTGAGGCTCAAAGTGTATTCTTCGACGCTATTTTTGAACTGA
 CACAAAGTTTCATCATTCCATTAGAAAGATATGTGGCAAGCTTGATGCCTTTCGAGAAAAGTATTTCCCC
 ATGGAAGAGTCCACCTCAATTAAGACAGTTTCTCCAGAAGAATTTATGAAAACACTTGAGAAAACAGGA
 CCTCAGCTAACCTCTAGAATAAAAGGCGATTGGATTGGACTTTACCGGCATTTCTAAAGTCTCAAATT
 TTGATGGCTGGTTAAGACCCGGAGGAAGGAAATGACCCAAAAATGGAGGCACTCCATCTAGAAGCTCT
 TTGTGAAGAGGACTTACTTCTGATCCAGAAACACACAGAAGTAGAAACAGTAGACCTTGTCTTGAAG
 CTGAAAAATAAGCTGTTGACGGCTGATCGAGAGCACTTACCTGTGAAACCTGACACTATGAAAAAGTTAC
 GGACACACATAGATGCCATTATCTTAGCATTGCCAGAGGACTTGAAGGCATACTGCTCAAACGGGCAT
 GACA

ACGCGTACGCGGCCGCTCGAGCAGAAACTCATCTCAGAAGAGGATCTGGCAGCAAATGATATCCTGGATT
 ACAAGGATGACGACGATAAGGTTTAA

Protein Sequence:

>RC207268 protein sequence
 Red=Cloning site Green=Tags(s)

MALRGPAGLPGSRRPLDEAVAGAEGREAPALVAAGGAPEDDEEDDGRGRGLLRWDSFSAWLHCVCVVG
 DLELGQAVEVIYPQHSKLTDRKTNICYLSFPDSNSGCLGDTQFCFRFRQSSGRRVSLHCLLDQFDKDL
 VYLKDPAYFYGYVYFRQVRDKTLKRGYFQKSLVLSKLPYIHFHTVLKQIAPEYFEKNEPYLEAACND
 VDRWPAPVPGKTLHLPIMGVVMKVRIPTCHDKPGTTQIVQLTQQVDNIVLPTVHEVDIFRCFCPVFL
 HSQMLWELVLLGEPLVVMAPSPSESSETVLALVNCISPLKYFSDFRPYFTIHDSEFKEYTTRTQAPPSVI
 LGVTNPFPAKTLQHWPHIIRIGDLKPTGEIPKQVKVKKLKNLKTLDSPKGYYSYKPYLNRDEEIIKQLQ
 KGVQQKRPSEAQSVILRRYFLELTQSFIIPLERYVASLMPLQKSI SPWKSPPQLRQFLPEEFMKTLEKGT
 PQLTSRIKGDWIGLYRHFLKSPNFDGWFKTRRKEMTQKLEALHLEALCEEDLLLWIQKHEVETVDLVLK
 LKNKLLQADREHLPVKPDTMEKLRTHIDAIILALPEDLQGILLKTGMT

TRTRPLEQKLISEEDLAANDILDYKDDDDKV

Chromatograms: https://cdn.origene.com/chromatograms/mk6523_e01.zip

Restriction Sites: SgfI-MluI

Cloning Scheme:



ACCN: NM_152678

ORF Size: 1824 bp

OTI Disclaimer: The molecular sequence of this clone aligns with the gene accession number as a point of reference only. However, individual transcript sequences of the same gene can differ through naturally occurring variations (e.g. polymorphisms), each with its own valid existence. This clone is substantially in agreement with the reference, but a complete review of all prevailing variants is recommended prior to use. [More info](#)

OTI Annotation: This clone was engineered to express the complete ORF with an expression tag. Expression varies depending on the nature of the gene.

Components: The ORF clone is ion-exchange column purified and shipped in a 2D barcoded Matrix tube containing 10ug of transfection-ready, dried plasmid DNA (reconstitute with 100 ul of water).

Reconstitution Method:

1. Centrifuge at 5,000xg for 5min.
2. Carefully open the tube and add 100ul of sterile water to dissolve the DNA.
3. Close the tube and incubate for 10 minutes at room temperature.
4. Briefly vortex the tube and then do a quick spin (less than 5000xg) to concentrate the liquid at the bottom.
5. Store the suspended plasmid at -20°C. The DNA is stable for at least one year from date of shipping when stored at -20°C.

RefSeq: [NM_152678.1](#), [NP_689891.1](#)

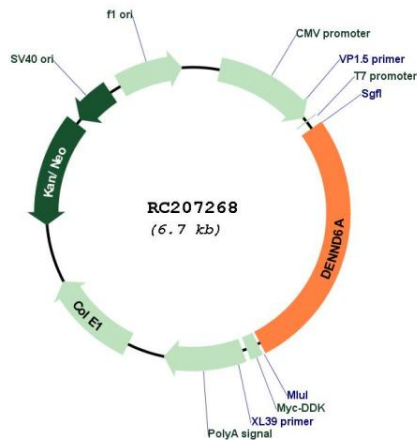
RefSeq Size: 4679 bp

RefSeq ORF: 1827 bp

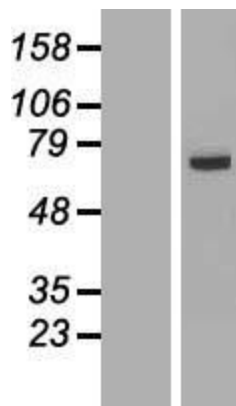
Locus ID: 201627
UniProt ID: [Q8IWF6](#)
Cytogenetics: 3p14.3
MW: 69.6 kDa

Gene Summary: Guanine nucleotide exchange factor (GEF) for RAB14. Component of an endocytic recycling pathway that is required for the control of ADAM10 transport, shedding of N-cadherin/CDH2 by ADAM9 or ADAM10 and regulation of cell-cell junctions. Required for RAB14 recruitment to recycling endosomes.[UniProtKB/Swiss-Prot Function]

Product images:



Circular map for RC207268



Western blot validation of overexpression lysate (Cat# [LY407356]) using anti-DDK antibody (Cat# [TA50011-100]). Left: Cell lysates from untransfected HEK293T cells; Right: Cell lysates from HEK293T cells transfected with RC207268 using transfection reagent MegaTran 2.0 (Cat# [TT210002]).