

Product datasheet for **RC207267**

VPS41 (NM_014396) Human Tagged ORF Clone

Product data:

Product Type:	Expression Plasmids
Product Name:	VPS41 (NM_014396) Human Tagged ORF Clone
Tag:	Myc-DDK
Symbol:	VPS41
Synonyms:	HVPS41; hVps41p; HVSP41
Mammalian Cell Selection:	Neomycin
Vector:	pCMV6-Entry (PS100001)
E. coli Selection:	Kanamycin (25 ug/mL)



[View online »](#)

ORF Nucleotide Sequence:

>RC207267 ORF sequence
 Red=Cloning site Blue=ORF Green=Tags(s)

TTTTGTAATACGACTCACTATAGGGCGGCCGGAATTCGTCGACTGGATCCGGTACCGAGGAGATCTGCC
 GCC**CGCATCGCC**

ATGGCGGAAGCAGAGGAGCAGGAAACTGGTCCCTTGAAGAATCTACAGATGAGTCTGAGGAAGAAGAGA
 GCGAAGAGGAACCAAGCTGAAGTATGAAAGGCTTCCAATGGGGTAACTGAAACTTTCAGAAGGATGC
 AGCTAGCTGCATGACAGTCCATGACAAGTTTTTGGCATTGGGCACACATTATGGCAAGGTTATTTACTT
 GATGTCCAGGGGAACATCACTCAGAAGTTTGATGTAAGTCTGTGAAGATAAATCAGATTAGCTTGGATG
 AAAGTGGAGAGCACATGGGTGTGTTCAGAGGATGGCAAGTGCAGGATTTGGACTGTATTCTGGAGA
 AGAATTTACAGAGACTTTTACTGTCCCATTAAAATTATTGCTGTGCACCCACATTTCTGAGATCCAGT
 TGCAAGCAGTTTGTGACCGGAGGGAAGAAGCTGCTACTGTTTGAACGGTCTTGGATGAACAGATGGAAGT
 CTGCTGTTCTGCATGAAGGGGAAGGGAACATAAGGAGTGTGAAGTGGAGAGGCCATCTGATTGCTGGGC
 CAATAATATGGGTGTGAAGATTTTTGACATCATCTCAAAGCAAAGAATCACCAATGTGCCCGGGATGAT
 ATAAGTCTTCGCCAGACATGTATCCCTGCAGCCTCTGCTGGAAGGACAATGTGACACTGATTATTGGCT
 GGGGACTTCTGTCAAGGTGTGCTCAGTGAAGAACGGCATGCCAGTGAATGAGGGATTGGCAAGTCG
 ATATGTTGAAATAGTGTCTCAGTTTGAAGTGAATTCTACATCAGTGGACTTGCACCTCTCTGTGATCAG
 CTTGTTGACTTTTCGTATGTAAGGAGATTTTCAGAAAAACGAAAGAGAATACTGTGCCAGGCCTAGAC
 TGGACATCATCCAGCCACTTTCTGAGACTTGTGAAGAGATCTCTTCTGATGCTTTGACAGTCAGAGGCTT
 TCAGGAGAATGAATGTAGAGATTATCATTTAGAATACTCTGAAGGGGAATCACTTTTTTACATCGTGAGT
 CCGAGAGATGTTGTAGTGGCCAAGGAACGAGACCAAGATGATCACATTGACTGGCTCCTTGAAGAAGA
 AATATGAAGAAGCATTGATGGCAGCTGAAATTAGCCAAAAAATATTAAGACATAAGATTCTGGATAT
 TGGCTTGGCATATATAAATCACCTGGTGGAGAGAGGAGACTATGACATAGCAGCAGCAAAATGCCAGAAA
 ATTCTTGGAAAAATGCAGCACTCTGGGAATATGAAGTTTATAAATTTAAAGAAATTGGACAGCTTAAGG
 CTATTAGTCCTTATTTGCCAAGAGGTGATCCAGTTCTGAAACCACTCATCTATGAAATGATCTTACATGA
 ATTTTTGGAGAGTGATTATGAGGGTTTTGCCACATTGATCCGAGAATGGCCTGGAGATCTGTATAAAT
 TCAGTCATAGTTCAAGCAGTTCGGGATCATTTGAAGAAAGATAGTCAGAACAAGACTTTACTTAAAAACC
 TGGCAGAATTGTACCTATGACAAGAATATGGCAATGCTCTGGAAATATACTTAAACATTAAGACATAA
 AGACGTTTTTCAGTTGATCCACAAGCATAATCTTTTCAGTTCTATCAAGGATAAAATTGTTTTATTAATG
 GATTTTGATTGAGAGAAAGCTGTTGACATGCTTTTGGACAATGAAGATAAAATTTCAATTAAGGAGTAG
 TGGAAGAATTGGAAGACAGACCAGAGCTACAGCATGTGTATTTGCATAAGCTTTTCAAGAGAGACCACCA
 TAAGGGGCAGCGTTACCATGAAAAACAGATCAGTCTTTATGCTGAATATGATCGACCAAACCTTACTTCCC
 TTTCTCCGAGACAGTACCCATTGCCACTTGAAGGCTCTTGGATCTGTCAACAGAGAAAACCTTGTAG
 AAGAGACAGTTTATCTTCTGAGCCGAATGGGTAATAGCCGAAGTGCCTGAAGATGATTATGGAGGAATT
 ACATGATGTTGATAAAGCAATCGAATTTGCCAAGGAGCAAGATGATGGAGAGCTGTGGGAAGATTGATT
 TTATATTCCATTGACAAACCACATTTTACTGGCTTGTAAACAACATTGGCACACATGTTGACCCAA
 TTCTACTGATTCACCGTATTAAGGAAGGAATGGAGATCCCAATTTGAGAGATTCCTTGGTTAAATTTCT
 GCAAGACTACAATTTGCAAATTTGCTTCTGTGAAGGCTGCAAGAAGATTCTCGTAGCTGACTCTTTGTCC
 TTTACTGAAGAAAATGCACCGAACTCAAATGAAAGGTGTTCTTGTGATGAGGAGAACATCTGTGAGTCGT
 GCCTTTCCCTATTCTTCCATCAGATGCAGCTAAGCCCTTCAAGCGTGGTGGTCTTCCATTGCCGGCACAT
 GTTCCACAAGGAGTGCTGCCATGCCAGCATGAACTCTGCTGCACAGTTCTGCAACATCTGCAGTGCT
 AAGAACCCTGGACCAGGAAGTGAATTTGGAGATGAAAAA

ACGCGTACGCGGCCGCTCGAGCAGAACTCATCTCAGAAGAGGATCTGGCAGCAATGATATCCTGGATT
 ACAAGGATGACGACGATAAGGTTTAA

Protein Sequence: >RC207267 protein sequence
 Red=Cloning site Green=Tags(s)

MAEAEQETGSLEESTDESEEEEESEEPKLYERLSNGVTEILQKDAASCMTVHDKFLALGTHYGKVVLL
 DVQGNITQKFDVSPVKINQISLDESGEHMGVCSDEGKVVQVFLYSGEFHFETFDPCIKIIAVHPHFVRSS
 CKQFVTGGKLLLFERSWMNRWKSAVLHEGEGNIRSVMKWRGHLIAWANNMGVKIFDIIISKQRITNVPRDD
 ISLRPDMYPCSLCWKDNVTLIIIGWTSVKVCSVKERHASEMRDLPSRYVEIVSQFETEFYISGLAPLCDQ
 LVVLSYVKEISEKTEREYCARPLDIIQPLSETCEEISSDALTVRGFQENECRDYHLEYSEGESLFYIVS
 PRDVVVAKERDQDDHIDWLEKKKYEALMAAEISQKNIKRHKILDIGLAYINHLYVERGDYDIAARKCQK
 ILGKNAALWEYEVYKFEIGQLKAI SPYLP RGDVLPKPLIYEMILHEFLESYEGFATLIREWPGDLYNN
 SVIVQAVRDHLKDSQNKTLTKTLAELYTDKNYGALEIYLTLRHKDFVQLIHKHNLFSISKDKIVLLM
 DFDSEKAVDMLLDNEDKISIKKVVELEDPELQHVYLHKLFRDHHKQRYHEKQISLYAEYDRPNLLP
 FLRDSTHCPLKALEICQQRNFVEETVYLLSRMGNSRSALKMIMEELHDVDAIEFAKEQDDGELWEDLI
 LYSIDKPPFITGLLNNIGTHVDPILLIHRKEGMEIPNLRDLSVKILQDYNLQILLREGCKKILVADSLS
 LLKMHRTQMKGVLVDEENICESCLSPILPSDAKPFVSVVVFHCRHMFHKECLPMPMSNSAAQFCNICSA
 KNRGPGSAILEMKK

TRTRPLEQKLISEEDLAANDILDYKDDDDKV

Chromatograms: https://cdn.origene.com/chromatograms/mk6515_d03.zip

Restriction Sites: SgfI-MluI

Cloning Scheme:

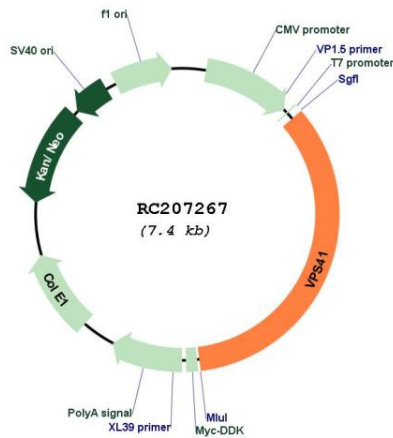
Cloning sites used for ORF Shuttling:



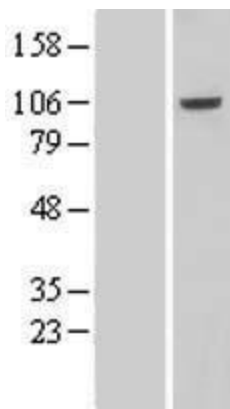
* The last codon before the Stop codon of the ORF

ACCN:	NM_014396
ORF Size:	2562 bp
OTI Disclaimer:	The molecular sequence of this clone aligns with the gene accession number as a point of reference only. However, individual transcript sequences of the same gene can differ through naturally occurring variations (e.g. polymorphisms), each with its own valid existence. This clone is substantially in agreement with the reference, but a complete review of all prevailing variants is recommended prior to use. More info
OTI Annotation:	This clone was engineered to express the complete ORF with an expression tag. Expression varies depending on the nature of the gene.
Components:	The ORF clone is ion-exchange column purified and shipped in a 2D barcoded Matrix tube containing 10ug of transfection-ready, dried plasmid DNA (reconstitute with 100 ul of water).
Reconstitution Method:	<ol style="list-style-type: none">1. Centrifuge at 5,000xg for 5min.2. Carefully open the tube and add 100ul of sterile water to dissolve the DNA.3. Close the tube and incubate for 10 minutes at room temperature.4. Briefly vortex the tube and then do a quick spin (less than 5000xg) to concentrate the liquid at the bottom.5. Store the suspended plasmid at -20°C. The DNA is stable for at least one year from date of shipping when stored at -20°C.
RefSeq:	NM_014396.4
RefSeq Size:	4894 bp
RefSeq ORF:	2565 bp
Locus ID:	27072
UniProt ID:	P49754
Cytogenetics:	7p14.1
Domains:	Clathrin
Protein Families:	Druggable Genome
MW:	98.6 kDa
Gene Summary:	Vesicle mediated protein sorting plays an important role in segregation of intracellular molecules into distinct organelles. Genetic studies in yeast have identified more than 40 vacuolar protein sorting (VPS) genes involved in vesicle transport to vacuoles. This gene encodes the human ortholog of yeast Vps41 protein which is also conserved in Drosophila, tomato, and Arabidopsis. Expression studies in yeast and human indicate that this protein may be involved in the formation and fusion of transport vesicles from the Golgi. Several transcript variants encoding different isoforms have been described for this gene, however, the full-length nature of not all is known. [provided by RefSeq, Jul 2008]

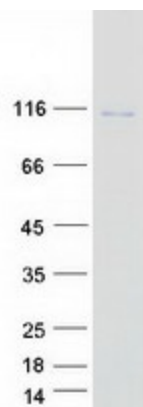
Product images:



Circular map for RC207267



Western blot validation of overexpression lysate (Cat# [LY415307]) using anti-DDK antibody (Cat# [TA50011-100]). Left: Cell lysates from untransfected HEK293T cells; Right: Cell lysates from HEK293T cells transfected with RC207267 using transfection reagent MegaTran 2.0 (Cat# [TT210002]).



Coomassie blue staining of purified VPS41 protein (Cat# [TP307267]). The protein was produced from HEK293T cells transfected with VPS41 cDNA clone (Cat# RC207267) using MegaTran 2.0 (Cat# [TT210002]).