

Product datasheet for **RC207266**

KIAA1576 (VAT1L) (NM_020927) Human Tagged ORF Clone

Product data:

Product Type:	Expression Plasmids
Product Name:	KIAA1576 (VAT1L) (NM_020927) Human Tagged ORF Clone
Tag:	Myc-DDK
Symbol:	KIAA1576
Mammalian Cell Selection:	Neomycin
Vector:	pCMV6-Entry (PS100001)
E. coli Selection:	Kanamycin (25 ug/mL)
ORF Nucleotide Sequence:	>RC207266 ORF sequence Red=Cloning site Blue=ORF Green=Tags(s)

TTTTGTAATACGACTCACTATAGGGCGGCCGGAATTCGTCGACTGGATCCGGTACCGAGGAGATCTGCC
GCC**CGATCGCC**

ATGGCCAAGGAAGGCGTGGAGAAGGCGGAGGAGACGGAGCAAATGATCGAGAAGGAGGCAGGCAAGGAGC
CGGCGGAGGGCGGCGGCGGACGGCTCGCACCCGCTCGGGGACGCCAGGAGATGCGCGCGGTGGTGTCT
GGCTGGCTTCGGGGGGCTCAACAAGCTGCGGCTCTTCAGGAAGGCCATGCCCGAGCCTCAGGACGGCGAG
CTCAAGATCCGCGTCAAAGCCTGTGGATTAACCTCATTGACTTGATGGTGGCACAAGGGAATATTGACA
ACCTCCCAAGACTCCCCTGGTGGCAGGATTTGAGTGTCTGGGATTGTTGAAGCTCTGGGGACAGCGCT
GAAAGGATATGAGATTGGAGACCGTGTCAATTTGTCAATTACAATGCCTGGGCAGAGGTGGTCTGC
ACACCAGTGGAGTTTGTCTACAAGATCCCGGATGACATGAGCTTCTCGGAGGCTGCTGCATTCCCCATGA
ACTTCGTACAGCCTATGTGATGCTGTTTGAAGTTGCCAACCTCCGGAAGGGATGTCTGTGCTCGTGCA
CTCAGCTGGTGGGGCGTGGGTCAAGCTGTGGCTCAGCTGTGTTCCACTGTCCCCAACGTGACTGTCTTT
GGAACAGCCTCTACTTTCAAGCATGAAGCAATCAAAGACTCTGTGACCCACCTCTTTGACAGAAATGCAG
ACTACGTGCAAGAAGTAAAAGAATCTCTGCTGAAGGTGTGGACATCGTTTTGGATTGCCTCTGTGGGGA
CAACACTGGAAAAGTCTCAGTCTTCTCAAACCCTGGGAACCTACATTTTATATGGCTCATCCAACATG
GTAAGTGGAGAGACCAAGAGCTTTCAGCTTTGCAAAATCATGGTGGCAGGTGGAGAAGGTGAACCCCA
TCAAGCTGTATGAGGAGAACAAGTTCATCGCGGGTTTTCCCTTTAAATCTGCTTTCAAACAAGGCCG
GGCGGGCCTCATTGGGGAGTGGTGGAAAACTCATAGGGCTCTACAACCAGAAGAAGATCAAGCCTGTG
GTGGACTCCTTGTGGCTCTGGAGGAGGTGAAGGAGGCCATGCAGCGGATTCACGACCGAGGGAACATTG
GCAAGTTAATTCTGGATGTAGAAAAGACCCCACTCCACTGATGGCCAATGACAGCACAGAGACCAGTGA
AGCAGGGGAAGAGGAGGAGGACACGAGGGAGACGCGAGAACAAGGAGCGGATGCCCTTTATCCAG

ACGCGTACGCGGGCGCTCGAGCAGAACTCATCTCAGAAGAGGATCTGGCAGCAAATGATATCCTGGATT
ACAAGGATGACGACGATAAGGTTTAA



[View online »](#)

Protein Sequence: >RC207266 protein sequence
Red=Cloning site Green=Tags(s)

MAKEGVEKAEETEQMIEKEAGKEPAEGGGDGSRLGDAQEMRAVVLAGFGGLNKLRLFRKAMPEPQDGE
 LKIRVKACGLNFIDL MVRQGNIDNPPKTPLVPGFECSGIVEALGDSVKGYEIGDRVMAFVNYNAWAEVVC
 TPVEFVYKIPDDMSFSEAAAFPMNFVTAYVMLFEVANLREGMSVLVHSAGGGVGOVAQLCSTVPNVTVF
 GTASTFKHEAIKDSVTHLFDNRADYVQEVKRI SAEGVDIVLDCLCGDNTGKGLSLLKPLGTIYL YGSSNM
 VTGETKSFFSFAKSWQVEKVNPIKLYEENKVIAGF SLLNLLFKQGRAGLIRGVVEKLIGLYNQKKIKPV
 VDSLWALEEVKEAMQRIHDRGNIGKILDVEKTP TPLMANDSTETSEAGEEEEEDHEGDSENKERMPFIQ

TRTRPLEQKLISEEDLAANDILDYKDDDDKV

Chromatograms: https://cdn.origene.com/chromatograms/mk6321_h04.zip

Restriction Sites: SgfI-MluI

Cloning Scheme:

Cloning sites used for ORF Shuttling:



* The last codon before the Stop codon of the ORF

ACCN: NM_020927

ORF Size: 1257 bp

OTI Disclaimer: The molecular sequence of this clone aligns with the gene accession number as a point of reference only. However, individual transcript sequences of the same gene can differ through naturally occurring variations (e.g. polymorphisms), each with its own valid existence. This clone is substantially in agreement with the reference, but a complete review of all prevailing variants is recommended prior to use. [More info](#)

OTI Annotation: This clone was engineered to express the complete ORF with an expression tag. Expression varies depending on the nature of the gene.

Components: The ORF clone is ion-exchange column purified and shipped in a 2D barcoded Matrix tube containing 10ug of transfection-ready, dried plasmid DNA (reconstitute with 100 ul of water).

Reconstitution Method:

1. Centrifuge at 5,000xg for 5min.
2. Carefully open the tube and add 100ul of sterile water to dissolve the DNA.
3. Close the tube and incubate for 10 minutes at room temperature.
4. Briefly vortex the tube and then do a quick spin (less than 5000xg) to concentrate the liquid at the bottom.
5. Store the suspended plasmid at -20°C. The DNA is stable for at least one year from date of shipping when stored at -20°C.

RefSeq: [NM_020927.1](#), [NP_065978.1](#)

RefSeq Size: 3784 bp

RefSeq ORF: 1260 bp

Locus ID: 57687

UniProt ID: [Q9HCJ6](#)

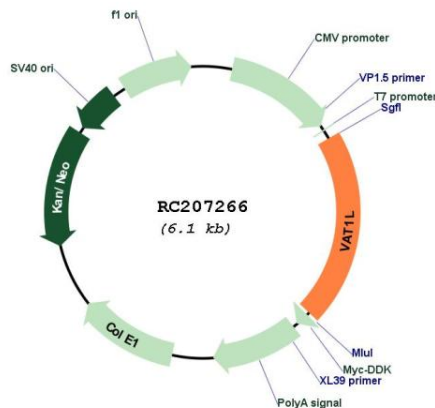
Cytogenetics: 16q23.1

Domains: ADH_zinc_N

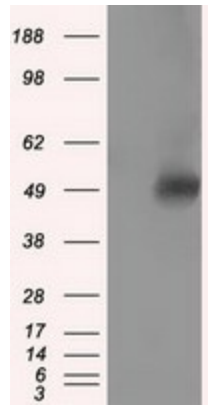
Protein Families: Druggable Genome

MW: 45.9 kDa

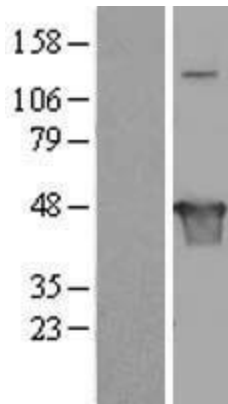
Product images:



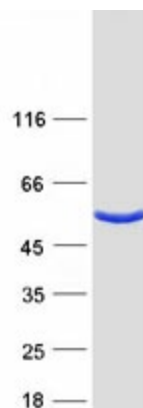
Circular map for RC207266



HEK293T cells were transfected with the pCMV6-ENTRY control (Cat# [PS100001], Left lane) or pCMV6-ENTRY VAT1L (Cat# RC207266, Right lane) cDNA for 48 hrs and lysed. Equivalent amounts of cell lysates (5 ug per lane) were separated by SDS-PAGE and immunoblotted with anti-VAT1L (Cat# [TA501107]). Positive lysates [LY412225] (100ug) and [LC412225] (20ug) can be purchased separately from OriGene.



Western blot validation of overexpression lysate (Cat# [LY412225]) using anti-DDK antibody (Cat# [TA50011-100]). Left: Cell lysates from untransfected HEK293T cells; Right: Cell lysates from HEK293T cells transfected with RC207266 using transfection reagent MegaTran 2.0 (Cat# [TT210002]).



Coomassie blue staining of purified VAT1L protein (Cat# [TP307266]). The protein was produced from HEK293T cells transfected with VAT1L cDNA clone (Cat# RC207266) using MegaTran 2.0 (Cat# [TT210002]).